

Features

- Coordinates with K-20195 to create modular sizes
- Three-way adjustable slow-close door hinges with 100-degree opening capability for easy cabinet access.
- Includes uninstalled decorative cabinet hardware.

Installation

- Detachable vanity bridge legs
- Includes installed stone top



Codes/Standards

None Applicable

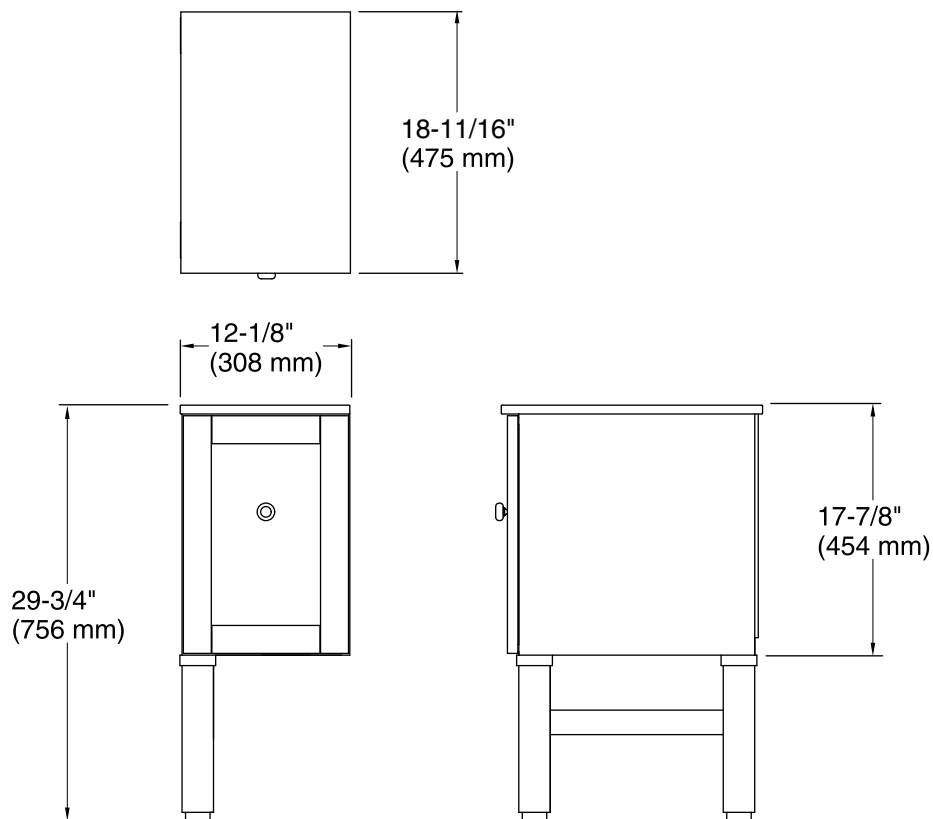
KOHLER® One-Year Limited Warranty

See website for detailed warranty information.

Available Color/Finishes

Color tiles intended for reference only.

Color	Code	Description
	1WA	Linen White
	F69	Woodland
	F2	Black Forest
	1WT	Mohair Grey



Technical Information

All product dimensions are nominal.

Vanity type: Vanity bridge

Notes

Install this product according to the installation instructions.

Select the type of fastener based upon the wall material. A minimum 250 lb (113.4 kg) load bearing fastener is recommended.