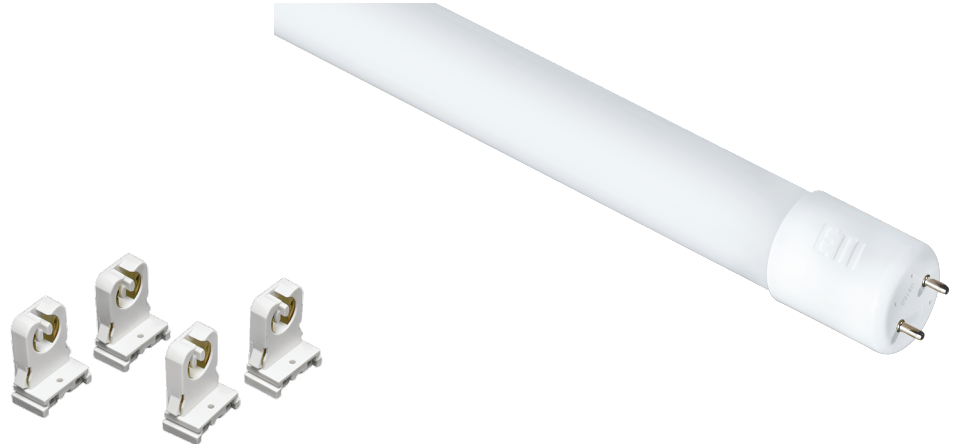


4' T8 Ballast Bypass Tubes - 2pk

1800 lm | Model 54296165 | Part T8BP-4-15-850-MV-2PK

- > Base G13 Bi-Pin
- > 5000K Cool White
- > Lasts 45 years* or 50,000 Hours Continuous Use
- > Maintenance Free — No Bulb Replacements
- > 5 Year Limited Warranty



SPECIFICATIONS

Model	54296165
Part	T8BP-4-15-850-MV-2PK
Description	LED Ballast Bypass Tube
Input Voltage (VAC)	120-277V
Wattage	15
Dimmability	Non-Dimmable
Average Rated Life ¹	50,000 hours
Typical Lumens ²	1800
CCT ³	5000K
Location Rating	UL Damp
CRI ⁴	80
Beam Angle	110°
Operating Temperature	Min -13°F (-26° C), Max 115°F (45° C)
Power Factor	> 0.9
R9	N/A
DUV	N/A
Operating Frequency (Hz)	50/60

¹ Hours lifetime with 70% lumen maintenance

² Thermally stable typical lumens (±10%)

³ Thermally stable CCT (±10%)

⁴ Color rendering index/Ra

TO ORDER:
www.ETiSSL.com
Call: 1.855.ETi.SSLI
1.855.384.7754





4' T8 Ballast Bypass Tubes - 2pk

1800 lm | Model 54296165 | Part T8BP-4-15-850-MV-2PK

SHIPPING INFORMATION

Model	54296165
Part	T8BP-4-15-850-MV-2PK
UPC	849489009216
Product Dimensions (L x W in.)	3' 11 3/4" in x 63/64"
Product Dimensions (L x W cm.)	121.3 x 2.4
Product Weight (lbs.)	0.51
Inner Carton Quantity	N/A
Inner Carton Bar Code	N/A
Inner Carton Dimensions (L x W x H in.)	N/A
Inner Carton Dimensions (L x W x H cm.)	N/A
Inner Carton Weight (lbs)	N/A
Master Carton Quantity	20
Master Carton Bar Code	50849489009211
Master Carton Dimensions (L x W x H in.)	5.1 x 11.65 x 8.26
Master Carton Dimensions (L x W x H cm.)	130 x 29.6 x 21 cm
Master Carton Weight (lbs)	18.74
Pallet Quantity	N/A

COMPATIBILITY

N/A

This device complies with part 15 of the FCC Rules. Operation is subject to the following two conditions: (1) This device may not cause harmful interference, and (2) this device must accept any interference received, including interference that may cause undesired operation. For FCC Part 15 user information, Please see www.ETiSSL.com/fcc15b

TO ORDER:
www.ETiSSL.com
Call: 1.855.ETi.SSLI
1.855.384.7754

ETi Solid State Lighting, Inc.
720 Corporate Woods Parkway
Vernon Hills, IL 60061
Phone: 855.384.7754
Fax: 847.383.6256