



Parts Manual

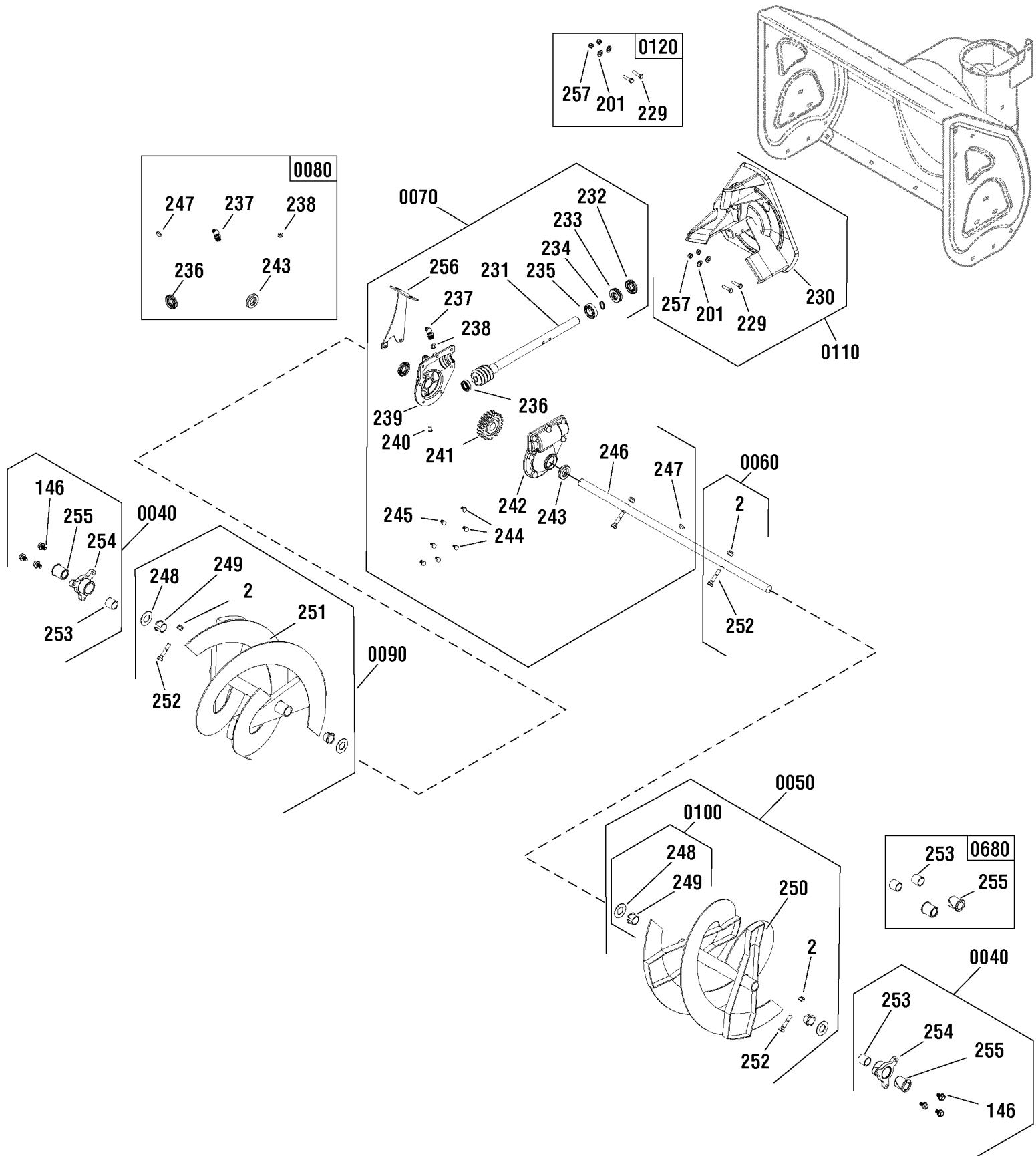
Mfg. No: 1696828-00
1530MDS, B&S 11.5 Gross TP 30"

Model Components	Page
Auger Drive Group.....	4
Auger Housing Group.....	6
Decals Group.....	8
Discharge Chute Group.....	10
Engine & Frame Group.....	12
Handles & Controls Group.....	14
Transaxle Drive Group.....	18
Wheels & Tires Group.....	20
Torque Specification Chart.....	22

Auger Drive Group

Note: Unless noted otherwise, use the standard torque specifications

Mfg. No: 1696828-00



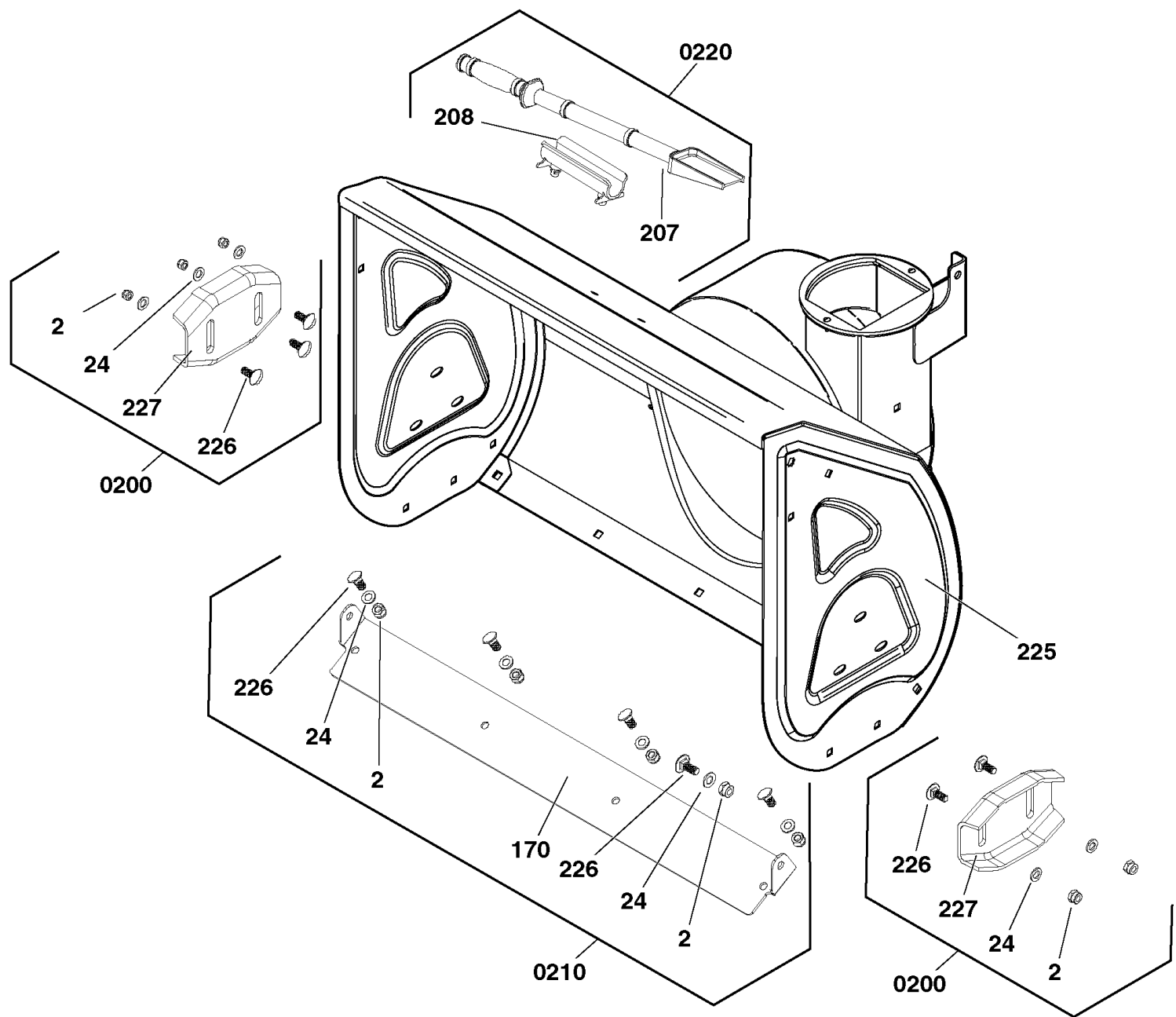
Auger Drive Group

REF NO	PART NO	QTY	DESCRIPTION
0040	707553	1	KIT, Mounting Plate, Auger Housing
0050	771732	1	KIT, Auger Assembly, Left
0060	707555	1	KIT, SHEAR PIN, AUGER
0070	771723	1	KIT, Gear Box, Auger
0080	707558	1	KIT, Seal, Gear Box
0090	771731	1	KIT, Auger Assembly, Right
0100	707554	1	KIT, Auger Shaft Hardware
0110	707560	1	KIT, Impeller Assembly
0120	707561	1	KIT, Shear Pin, Impeller
0680	707552	1	KIT, Bearing, Mounting Plate

Auger Housing Group

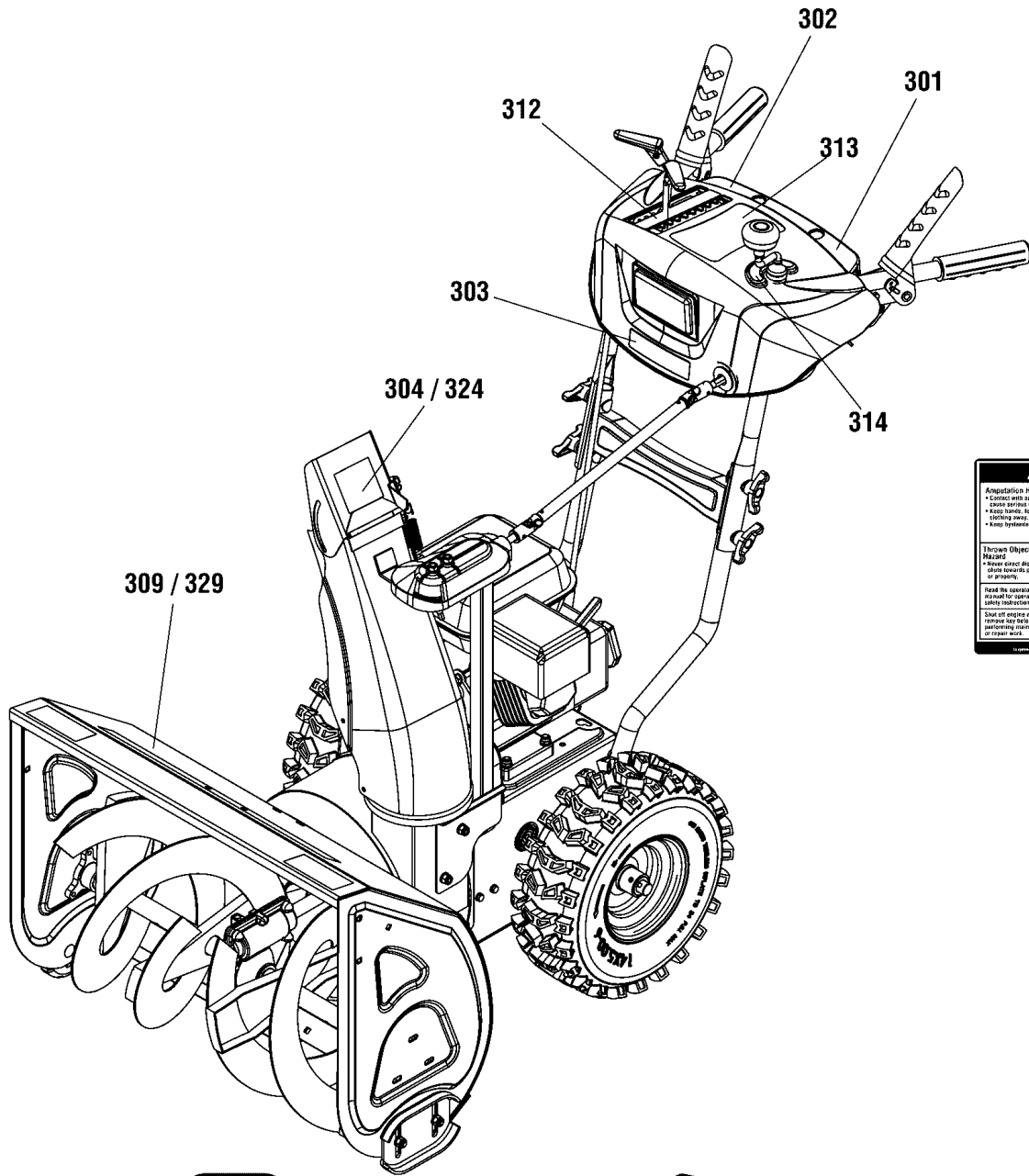
Note: Unless noted otherwise, use the standard torque specifications

Mfg. No: 1696828-00



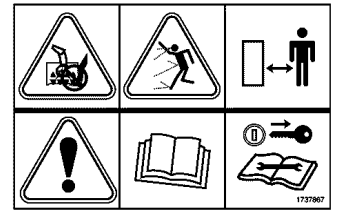
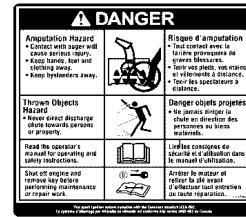
Auger Housing Group

REF NO	PART NO	QTY	DESCRIPTION
0200	707550	1	KIT, SKID SHOE
0210	770838	1	KIT, Scraper Bar
0220	707549	1	KIT, CLEANOUT BRUSH STICK



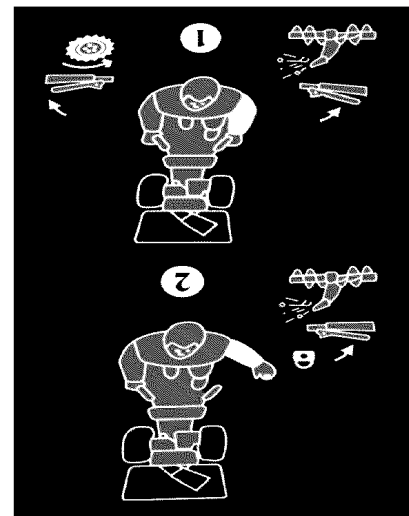
304

324

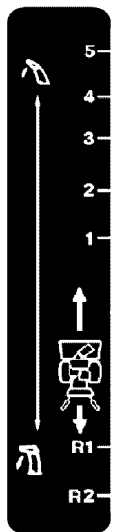


309

329



313



312



314



303



301



302

Decals Group

REF NO	PART NO	QTY	DESCRIPTION
301		1	*DECAL, Auger Control -(Included with Ref. No. 1 & 2) (Included with Dash Kit)
302		1	*DECAL, Traction Control -(Included with Ref. No. 1 & 2) (Included with Dash Kit)
303		1	*DECAL, Control Panel, Briggs & Stratton -(Included with Ref. No. 1 & 2)
304	1737865YP	1	DECAL, Danger Chute Warning, FR/ENG -(Included with Ref. No. 1)
309	1737866YP	1	DECAL, Danger Foot, FR/ENG -(Included with Ref. No. 1)
312		1	*DECAL, 1-6 Transmission Speed Control -(Included with Ref. No. 1 & 2) (Included with Dash Kit)
313		1	*DECAL, Free Hand Operation -(Included with Ref. No. 1 & 2) (Included with Dash Kit)
314		1	*DECAL, Chute Rotation -(Included with Ref. No. 1 & 2) (Included with Dash Kit)
324	1727207SM	1	DECAL, Chute Warning, Export -(Included with Ref. No. 2)
329	1737867YP	1	DECAL, Danger Auger Icons -(Included with Ref. No. 2)

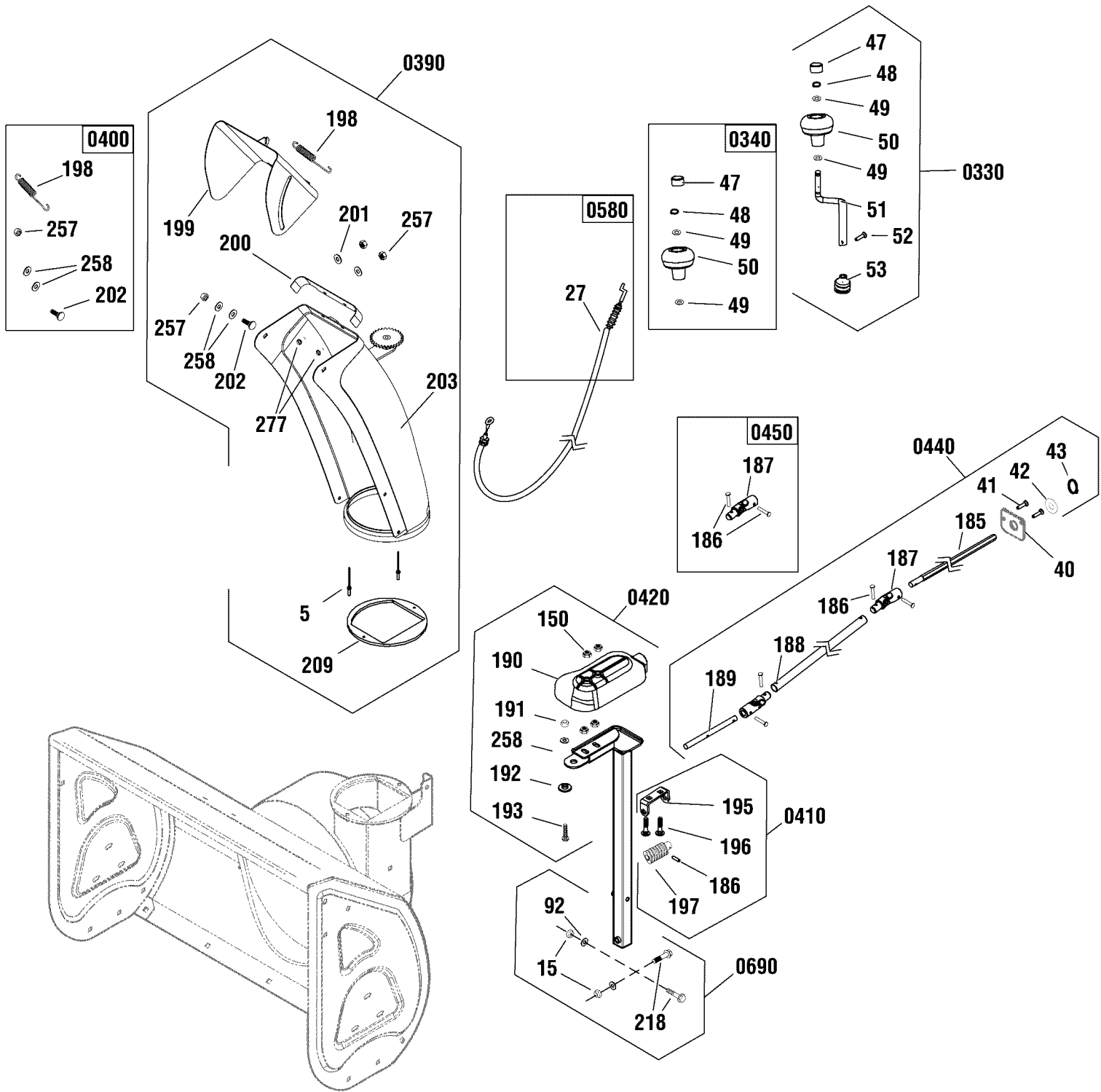
Footnotes:

Note:* Not a serviceable part.

Discharge Chute Group

Note: Unless noted otherwise, use the standard torque specifications

Mfg. No: 1696828-00



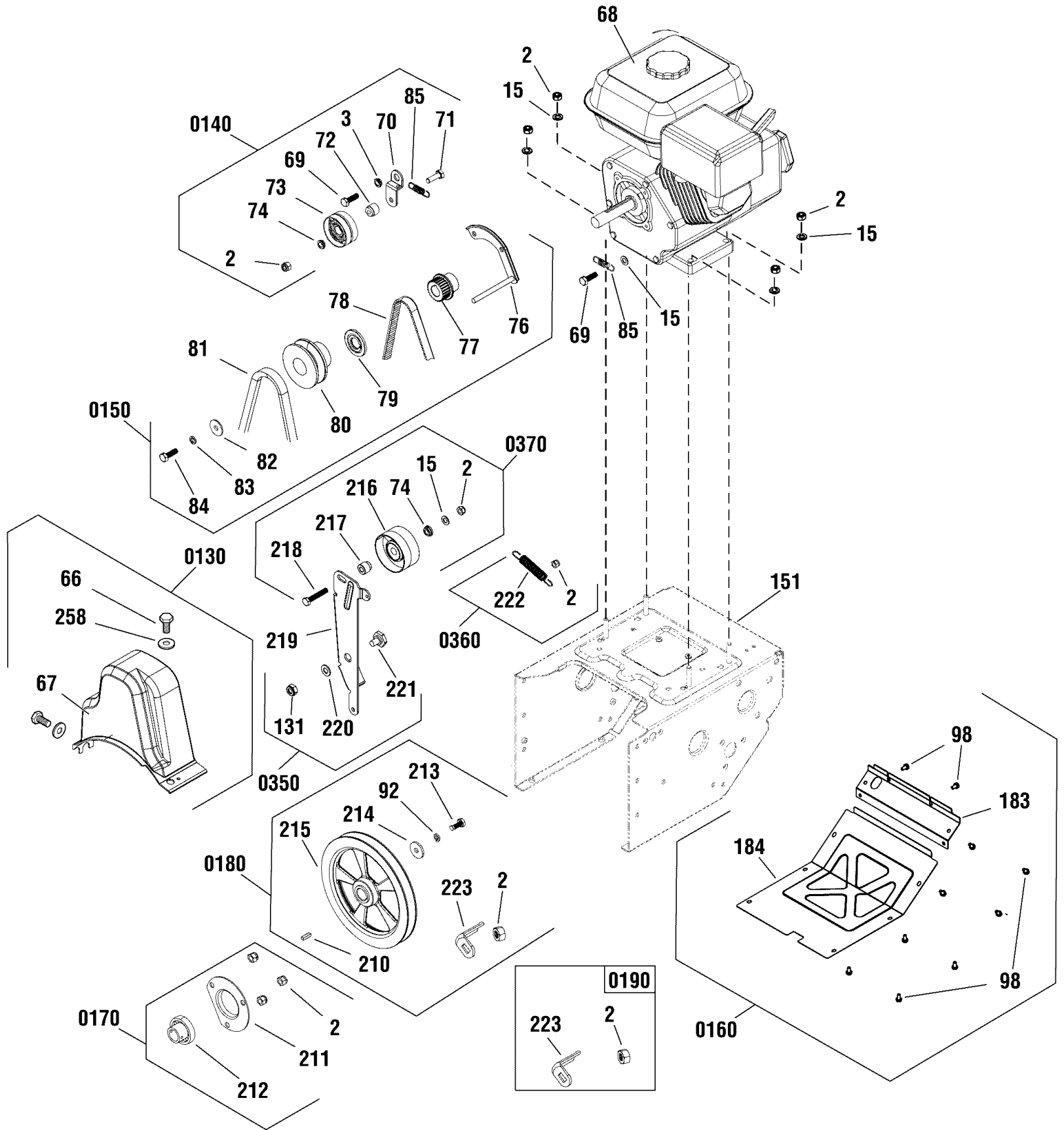
Discharge Chute Group

REF NO	PART NO	QTY	DESCRIPTION
0330	707503	1	KIT, Chute Rotation
0340	707502	1	KIT, Chute Knob
0390	771735	1	KIT, Chute Assembly (Domestic Only)
0400	707563	1	KIT, Spring, Chute
0410	707543	1	KIT, Worm Gear Hardware, Chute
0420	707544	1	KIT, Cover, Chute Rotation
0440	707525	1	KIT, Chute Rotaion Rod
0450	707524	1	KIT, Cardan Joint
0580	771734	1	KIT, Cable-Chute Deflector
0690	709757	1	KIT, Bracket, Chute Rotation Hardware

Engine & Frame Group

Note: Unless noted otherwise, use the standard torque specifications

Mfg. No: 1696828-00



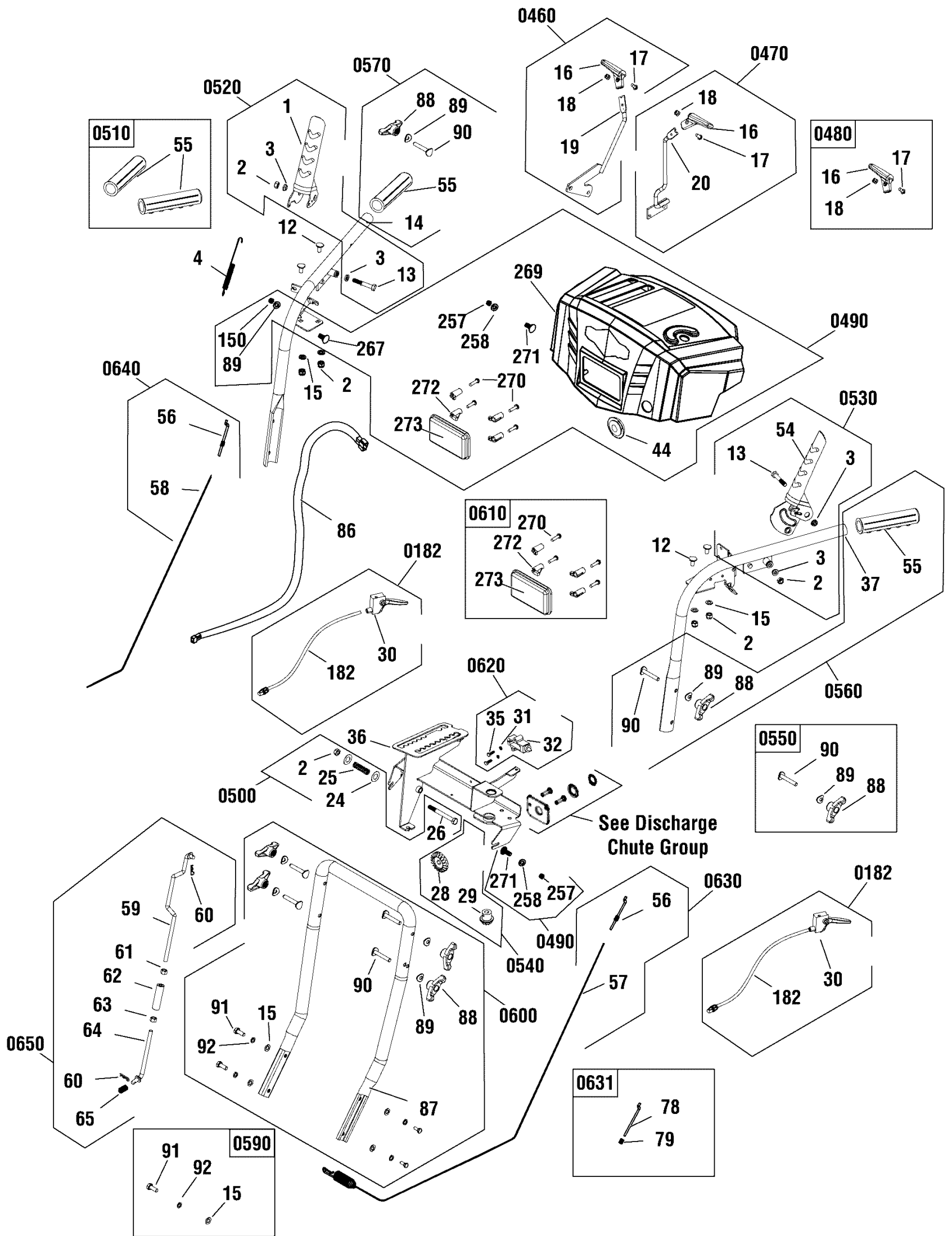
Engine & Frame Group

REF NO	PART NO	QTY	DESCRIPTION
68	19J137-0001-F1	1	* ENGINE, 14.5TP Briggs & Stratton -Engine Model: 19J137-0001-F1
78	770799	1	BELT, Traction Drive
81	770796	1	BELT, Auger Drive
219	770805	1	IDLER, Auger
0130	770792	1	KIT, Belt Cover
0140	770793	1	KIT, Idler Pulley, Traction Drive
0150	770818	1	KIT, Idler Pulley, Traction Drive
0160	770821	1	KIT, Bottom Cover
0170	770800	1	KIT, Bearing Hardware, Auger Pulley
0180	770803	1	KIT, Auger Pulley
0190	707547	1	KIT, BELT GUIDE, AUGER
0350	707565		KIT-HARDWARE, IDLER BRACKET
0360	770806		SPRING, Idler Pulley
0370	770807		KIT, Idler Pulley, Tension Plate

Handles & Controls Group

Note: Unless noted otherwise, use the standard torque specifications

Mfg. No: 1696828-00



Handles & Controls Group

REF NO	PART NO	QTY	DESCRIPTION
86	770788	1	HARNESS, Wiring
0182	711703	1	CABLE, Steering
30		1	LEVER, Steering Control Assembly
182		1	CABLE, Clutch
0460	707506	1	KIT, Lever, Speed -(Incl. Ref. Nos. 16, 17, 18 & 19)
0470	707502	1	KIT, Chute Knob -(Incl. Ref. Nos. 16, 17, 18 & 20)
16		1	KNOB, SLOT SPEED, BLACK -(Included with Ref. No. 0470)
0480	707504	1	KIT, Knob, Lever -(Incl. Ref. Nos. 16, 17 & 18)
16		1	KNOB, SLOT SPEED, BLK/ORANGE -(Included with Ref. No. 0480)
17		1	SCREW, PHILLIPS HEAD, M5X18
18		1	NUT, LOCK, M5
0490	770811	1	ASSEMBLY, Dash -(Included with Ref. No. 0490)
44		1	BUSHING, ROTATION ROD, DASH -(Incl. Ref. Nos. 44, 89, 150, 257, 258, 267, 269, 270, 271, 272 & 273)
89		1	WASHER, CURVED, M8 -(Incl. Ref. Nos. 44, 89, 150, 257, 258, 267, 269, 270, 271, 272 & 273)
150		1	NUT, HEX FLANGE HEAD, M8 -(Incl. Ref. Nos. 44, 89, 150, 257, 258, 267, 269, 270, 271, 272 & 273)
257		1	NUT, LOCK, M6 -(Incl. Ref. Nos. 44, 89, 150, 257, 258, 267, 269, 270, 271, 272 & 273)
258		1	WASHER, FLAT, 6X18X1.5 -(Incl. Ref. Nos. 44, 89, 150, 257, 258, 267, 269, 270, 271, 272 & 273)
267		1	BOLT, CARRIAGE, CURVED HEAD, M8 X 40 -(Incl. Ref. Nos. 44, 89, 150, 257, 258, 267, 269, 270, 271, 272 & 273)
269		1	PANEL, DASH, STANDARD, BLK -(Incl. Ref. Nos. 44, 89, 150, 257, 258, 267, 269, 270, 271, 272 & 273)
270		4	BOLT, Phillips Head -(Incl. Ref. Nos. 44, 89, 150, 257, 258, 267, 269, 270, 271, 272 & 273)
271		1	BOLT, CARRIAGE, M6X16 -(Incl. Ref. Nos. 44, 89, 150, 257, 258, 267, 269, 270, 271, 272 & 273)
272		4	CLAMP, LIGHT -(Incl. Ref. Nos. 44, 89, 150, 257, 258, 267, 269, 270, 271, 272 & 273)
273		1	LIGHT ASSEMBLY -(Incl. Ref. Nos. 44, 89, 150, 257, 258, 267, 269, 270, 271, 272 & 273)
0500	707507	1	KIT, Hardware, Speed & Discharge
0510	770769	1	KIT, Grip, Handle
0520	770771	1	KIT, Right Hand Lever (Traction Drive)
0530	770772	1	KIT, Left Hand Lever (Auger Drive)
0540	770774	1	KIT, Bevel Gear, Chute Rotation
0550	707513	1	KIT, Wing Knob, Handle
0560	770776	1	KIT, Upper Handle, Left
0570	770778	1	KIT, Upper Handle, Right
0590	770780	1	KIT, Lower Handle Hardware
0600	770781	1	KIT, Lower Handle
0610	770782	1	KIT, Headlight
0620	707521	1	KIT, Free Hand Control Assembly
0630	770784	1	KIT, Cable, Auger Clutch

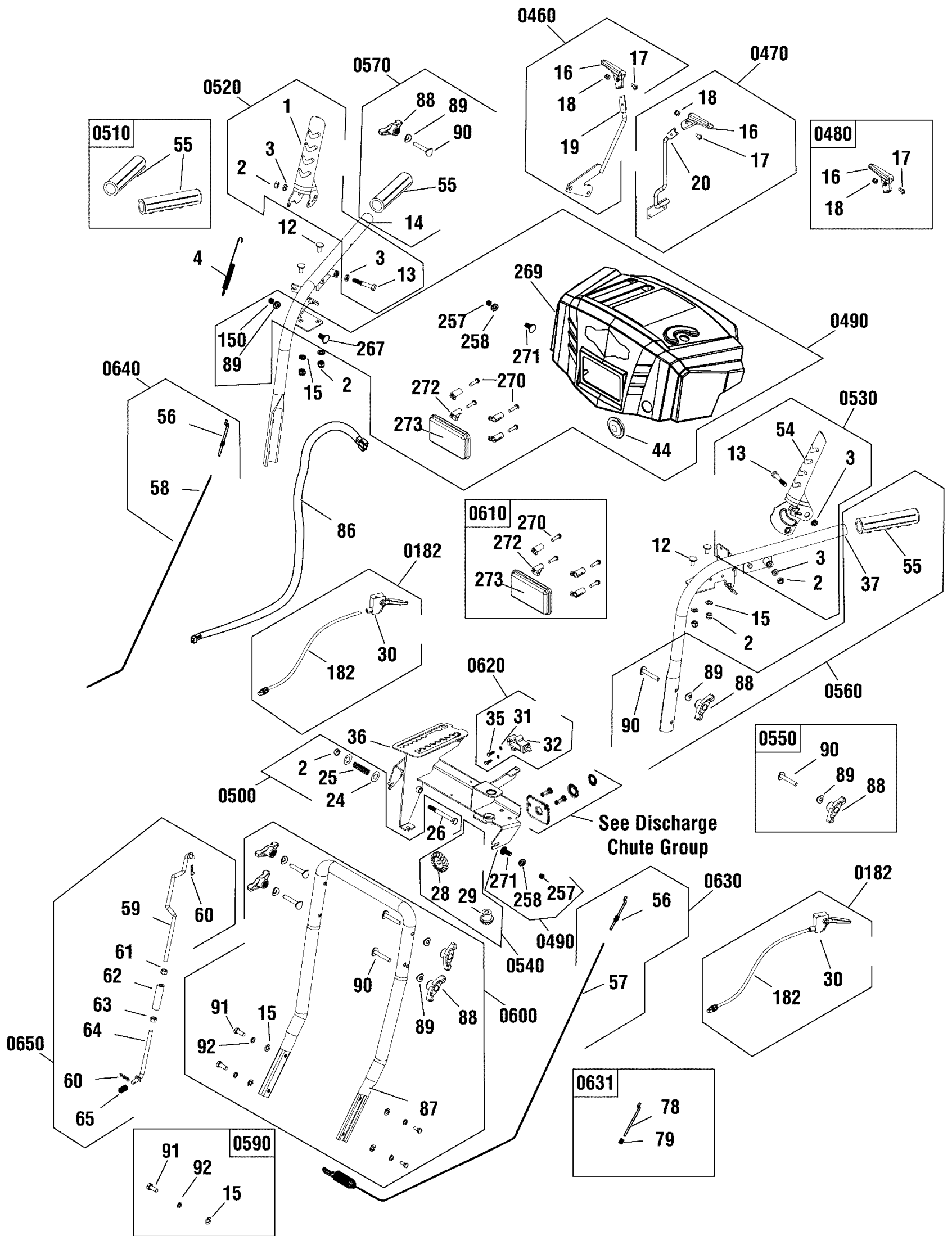
Footnotes:

Note:* Not a serviceable part.

Handles & Controls Group

Note: Unless noted otherwise, use the standard torque specifications

Mfg. No: 1696828-00



Handles & Controls Group

REF NO	PART NO	QTY	DESCRIPTION
0631	770785	1	KIT, Cable, Hardware
0640	770786	1	KIT, Cable, Traction Drive
0650	770787	1	KIT, Traction Drive Rod

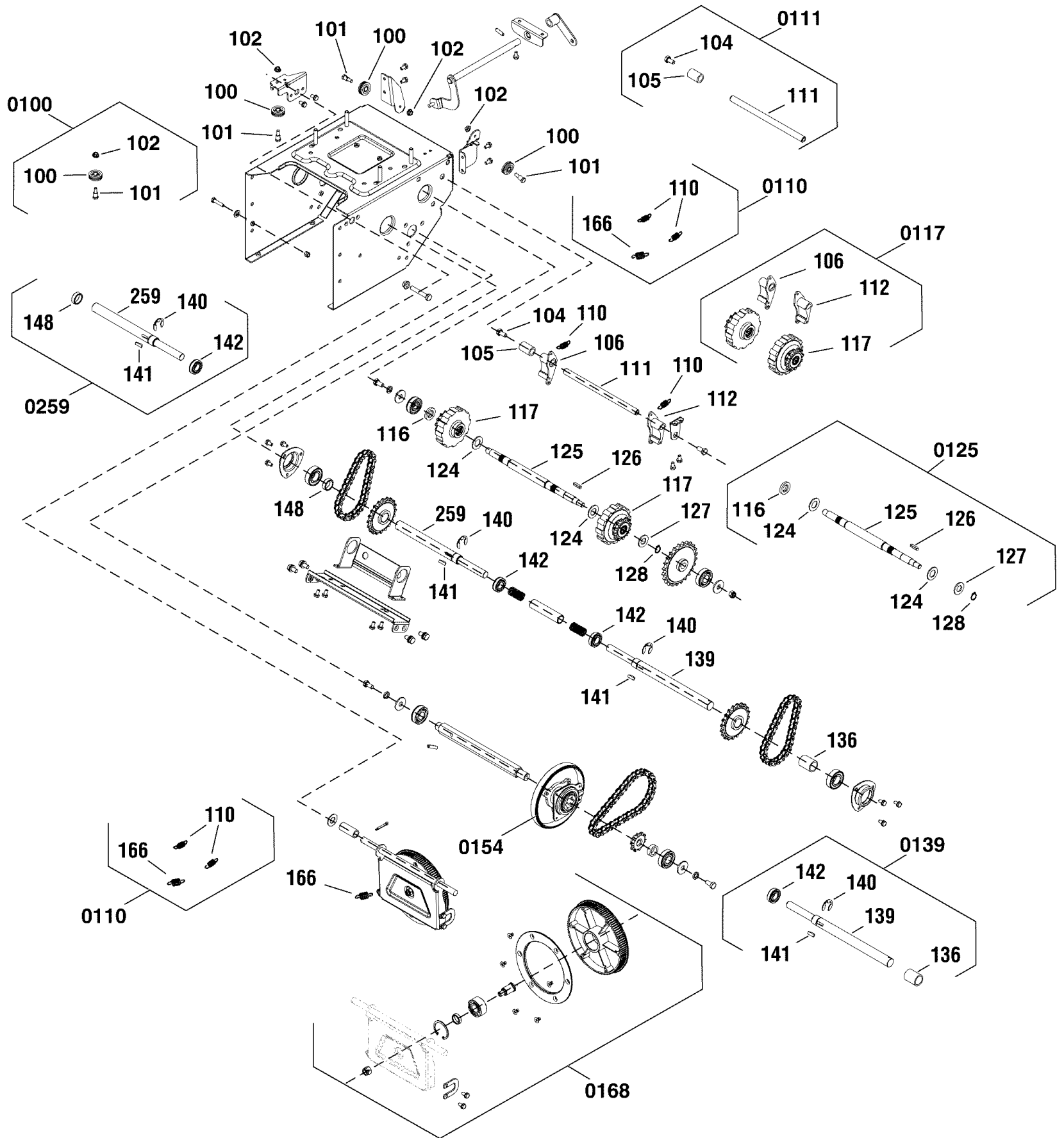
Footnotes:

Note:* Not a serviceable part.

Transaxle Drive Group

Note: Unless noted otherwise, use the standard torque specifications

Mfg. No: 1696828-00



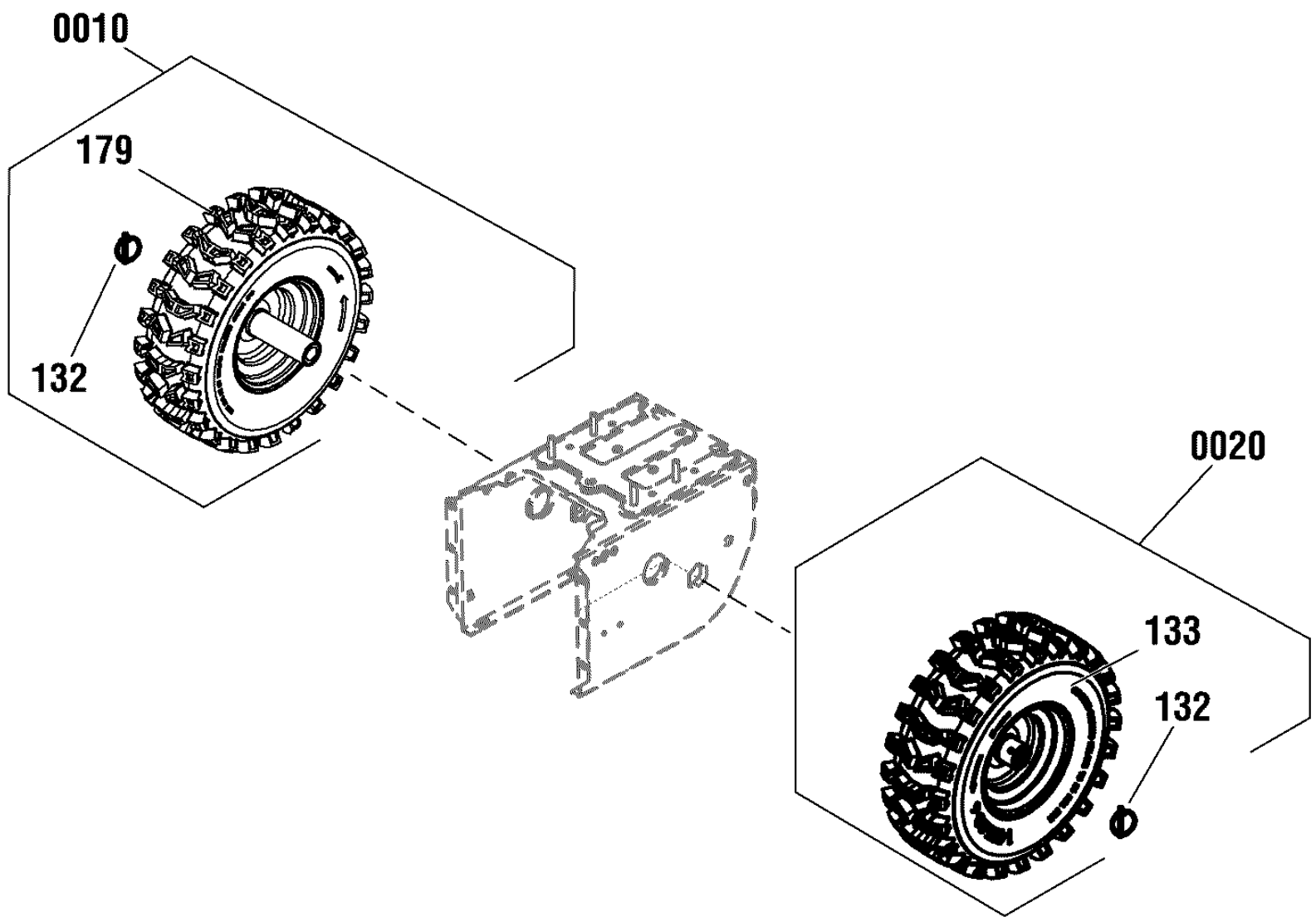
Transaxle Drive Group

REF NO	PART NO	QTY	DESCRIPTION
0100	707541	1	KIT, Pulley, Cable
100		3	PULLEY, CABLE
101		3	SCREW, HEX HEAD SHOULDER, M6 X 12
102		3	NUT, HEX FLANGE HEAD, M6
0110	771706	1	KIT, Spring, Traction Drive
110		2	SPRING, Pawl
166		1	SPRING, Extension
0111	771712	1	KIT, Shaft, Pawl
104		5	SCREW, HEX HEAD, M8X20
105		1	SLEEVE, PAWL
111		1	SHAFT, PAWL
0117	771709	1	KIT, Planitary and Pawl Assembly
106		1	PAWL Assembly, Right
112		1	PAWL Assembly, Left
117		2	GEAR, Planitary Assembly
0125	771713	1	KIT, Shaft, Differential
116		1	SPACER, SHAFT, DIFFERENTIAL
124		2	WASHER, FLAT, 16X30X2
125		1	SHAFT, DIFFERENTIAL
126		1	KEY, FLAT, 5X5X22
127		1	WASHER, FLAT, 14X28X2
128		1	RING, RETAINING, 14
0139	771711	1	KIT, Shaft, Traction Drive LH
136		1	SLEEVE, Drive Shaft
139		1	AXLE
140		2	WASHER, LOCK, M15
141		2	KEY, WOODRUFF
142		2	BEARING, BALL, DEEP GROOVE
0154	771708	1	KIT, Friction Wheel
0168		1	KIT, Swing Plate
0259	771710	1	KIT, Shaft, Traction Drive RH
140		2	WASHER, LOCK, M15
141		2	KEY, WOODRUFF
142		2	BEARING, BALL, DEEP GROOVE
148		1	SLEEVE, DRIVE SHAFT
259		1	AXLE

Wheels & Tires Group

Note: Unless noted otherwise, use the standard torque specifications

Mfg. No: 1696828-00



Wheels & Tires Group

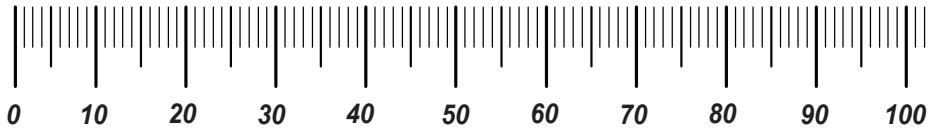
REF NO	PART NO	QTY	DESCRIPTION
0010	771718	1	KIT, Wheel & Tire Right
0020	771719	1	KIT, Wheel & Tire Left

Hardware Identification & Torque Specifications

Torque Specification Chart								
FOR STANDARD METRIC MACHINE HARDWARE (Tolerance ± 20%)								
Property Class	5.6		8.8		10.9		12.9	
	Class 5.6		Class 8.8		Class 10.9		Class 12.9	
Size Of Hardware	in/lbs	Nm.	in/lbs	Nm.	in/lbs	Nm.	in/lbs	Nm.
	ft/lbs		ft/lbs		ft/lbs		ft/lbs	
M3	5.88	.56	13.44	1.28	19.2	1.80	22.92	2.15
M4	13.44	1.28	30.72	2.90	43.44	4.10	52.56	4.95
M5	26.4	2.50	60.96	5.75	5.97	8.10	7.15	9.7
M6	44.64	4.3	7.3	9.9	10.3	14	12.1	16.5
M7	5.2	7.1	12.1	16.5	16.9	23	19.9	27
M8	7.7	10.5	17.7	24	25	34	29	40
M10	15	21	35	48	50	67	59	81
M12	26	36	61	83	86.2	117	103	140
M14	42	58	101	132	136	185	162	220
M16	64	88	147	200	210	285	250	340
M18	89	121	202	275	287	390	346	470
M20	126	171	290	390	405	550	486	660
M22	169	230	390	530	559	745	656	890
M24	217	295	497	375	708	960	840	1140
M27	320	435	733	995	1032	1400	1239	1680
M30	435	590	995	1350	1401	1900	1681	2280
M33	590	800	1349	1830	1902	2580	2278	3090
M36	759	1030	1740	2360	2441	3310	2935	3980
M39	988	1340	2249	3050	3163	4290	3798	5150

Torque Specification Chart						
FOR STANDARD MACHINE HARDWARE (Tolerance ± 20%)						
Hardware Grade	No Marks		SAE Grade 5		SAE Grade 8	
	SAE Grade 2		SAE Grade 5		SAE Grade 8	
Size Of Hardware	in/lbs	Nm.	in/lbs	Nm.	in/lbs	Nm.
	ft/lbs		ft/lbs		ft/lbs	
8-32	19	2.1	30	3.4	41	4.6
8-36	20	2.3	31	3.5	43	4.9
10-24	27	3.1	43	4.9	60	6.8
10-32	31	3.5	49	5.5	68	7.7
1/4-20	66	7.6	8	10.9	12	16.3
1/4-28	76	8.6	10	13.6	14	19.0
5/16-18	11	15.0	17	23.1	25	34.0
5/16-24	12	16.3	19	25.8	29	34.0
3/8-16	20	27.2	30	40.8	45	61.2
3/8-24	23	31.3	35	47.6	50	68.0
7/16-14	30	40.8	50	68.0	70	95.2
7/16-20	35	47.6	55	74.8	80	108.8
1/2-13	50	68.0	75	102.0	110	149.6
1/2-20	55	74.8	90	122.4	120	163.2
9/16-12	65	88.4	110	149.6	150	204.0
9/16-18	75	102.0	120	163.2	170	231.2
5/8-11	90	122.4	150	204.0	220	299.2
5/8-18	100	136	180	244.8	240	326.4
3/4-10	160	217.6	260	353.6	386	525.0
3/4-16	180	244.8	300	408.0	420	571.2
7/8-9	140	190.4	400	544.0	600	816.0
7/8-14	155	210.8	440	598.4	660	897.6
1-8	220	299.2	580	788.8	900	1,244.0
1-12	240	326.4	640	870.4	1,000	1,360.0

The guides and ruler furnished below are designed to help you select the appropriate hardware.

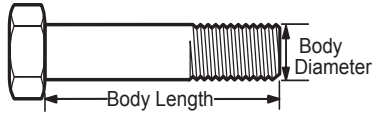


Nut, M8

Thread Diameter (mm)

Inside Diameter (in) Threads per inch

Nut, 1/2-16

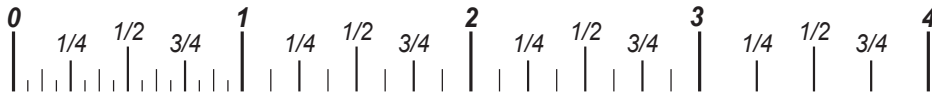


Screw, M8- 1.25 x 25

Thread Diameter (mm) Distance between threads (mm) Body Length (mm)

Body Diameter Threads per inch Body Length (in)

Screw, 1/2- 16 x 2



Standard Hardware Sizing

When a washer or nut is identified as 1/2" (M8), this is the *Nominal size*, meaning the *inside diameter* is 1/2 inch (8mm metric thread diameter); if a second number is present it represents the *threads per inch* (distance between threads).

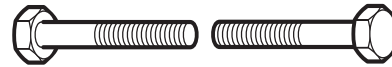
When bolt or capscrew is identified as 1/2 - 16 x 2" (M8 - 1.25 x 50), this means the *Nominal size*, or body diameter is 1/2 inch (8mm metric thread diameter), the second number, 16, represents the *threads per inch*, (*distance between threads*). The final number is the body length of the bolt or screw, 2 inches (50mm).

NOTES

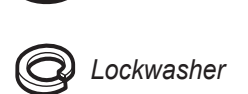
- These torque values are to be used for all hardware excluding: locknuts, self-tapping screws, thread forming screws, sheet metal screws and socket head setscrews.
- Recommended seating torque values for locknuts:
 - for prevailing torque locknuts - use 65% of grade 5 torques.
 - for flange whizlock nuts and screws - use 135% of grade 5 torques.
- Unless otherwise noted on assembly drawings, all torque values must meet this specification.

Common Hardware Types

Hex Head Capscrew



Washer



Carriage Bolt



Hex Nut

Wrench & Fastener Size Guide

1/4" Bolt or Nut Wrench—7/16"	5/16" Bolt or Nut Wrench—1/2"	3/8" Bolt or Nut Wrench—9/16"	7/16" Bolt or Nut Wrench (Bolt)—5/8" Wrench (Nut)—11/16"	1/2" Bolt or Nut Wrench—3/4"
M6 Bolt or Nut Wrench—10mm	M8 Bolt or Nut Wrench—13mm	M10 Bolt or Nut Wrench—17mm	M12 Bolt or Nut Wrench—19mm	M14 Bolt or Nut Wrench—22mm

