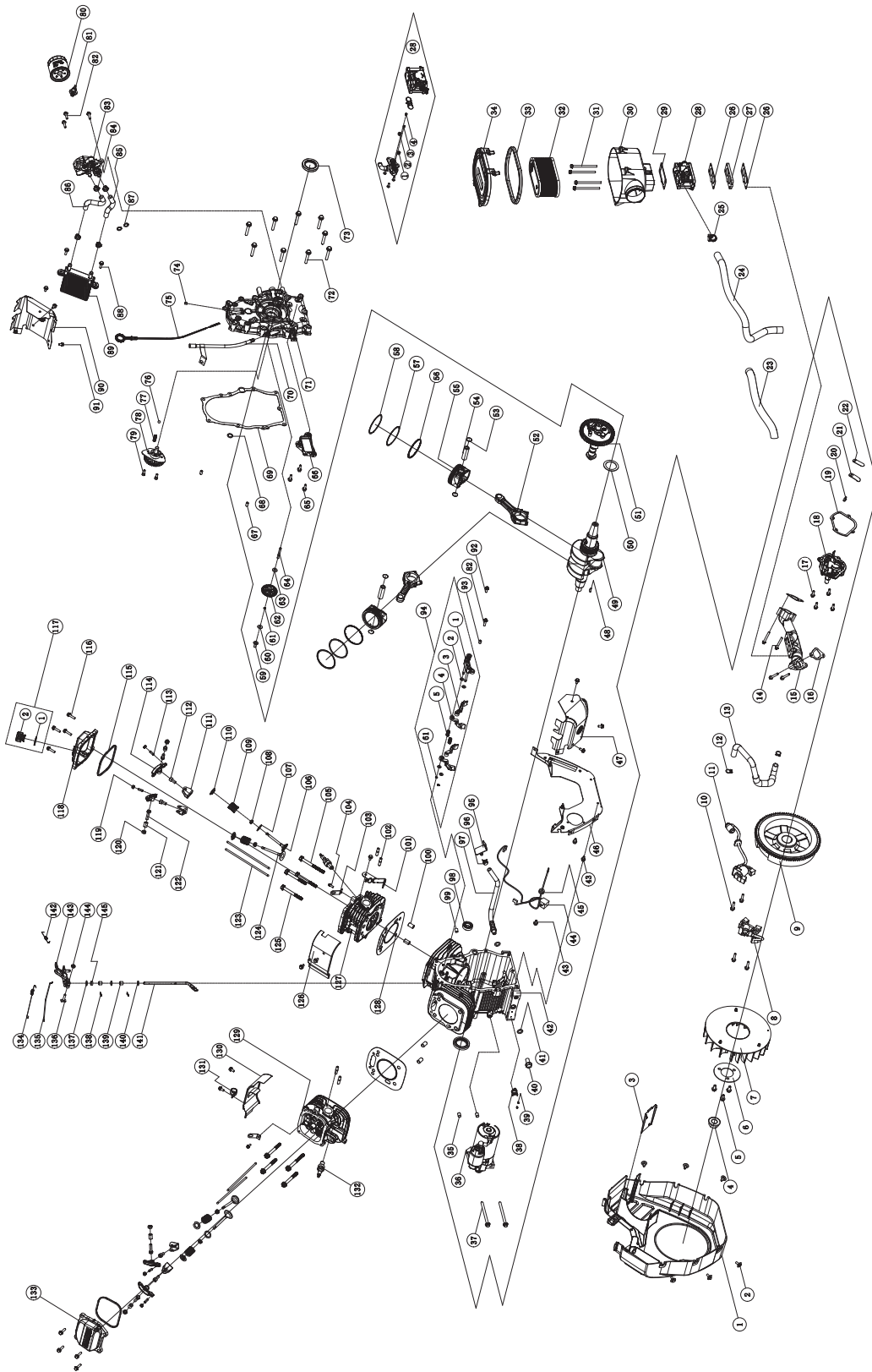


MAINTENANCE

/// ENGINE PARTS



MAINTENANCE

#	Part Number	Description	Qty	
1	101027	Cover, Fan (Rotating Screen With Oil Cooler Ribs)	1	
2	2.08.083	Bolt, Hex Flange M6	6	
3	717.070004.00	Bracket, Fuel Pump	1	
4	1.6177.20	Nut, M20 X 1.5 Flange	1	
5	1.5789.0816	Hex Flange Bolt, M8 X 16	3	
6	61.080005.00	Plate, Fan	1	
7	717.080001.00	Fan, Cooling	1	
8	717.123000.03	Ignition Coil Assembly, Cylinder 1, Emc	1	
9	100922	Flywheel Assembly	1	
10	1.5789.0629	Hex Flange Bolt, M6 X 29	4	
11	717.123000.04	Ignition Coil Assembly, Cylinder 2, Emc	1	
12	2.06.009	Clamp, 17 X 1.5	2	
13	100303	Tube, Breather	1	
14	1.16674.0640	Hex Small Flange Bolt, M6 X 40	4	
15	717.130012.00	Intake Manifold	1	
16	717.130011.00	Gasket, Intake Manifold	2	
17	1.16674.0620	Hex Small Flange Bolt, M6x20	4	
18	100486	Cover, Breather T3	1	
19	100504	Gasket, Breather Cover	1	
20	1.823.0410	Screw, Small Pan Head M4x10	2	
21	101767	Retainer, Reed Valve	1	
22	100693	Reed Valve	1	
23	101482	Protective Sleeve	1	
24	100342	Hose, Gaseous Fuel Id12.7	1	
25	100825	Clamp, Hose Id 25	1	
26	100258	Gasket, Carburetor	2	
27	61.130001.00	Insulator, Carburetor	1	
28	101495	Mixer Assembly	1	
NG	1	101488	Main Jet - Right	1
	2	100928	Main Jet - Left	1
LPG	1	101515	Main Jet - Right	1
	2	100909	Main Jet - Left	1
	3	101032	Slow Jet - Right	1
	4	100671	Slow Jet - Left	1
29	717.090005.00	Gasket, Ac Assembly	1	
30	101490	Base Assembly, Air Cleaner	1	
31	1.5789.0688	Hex Flange Bolt, M6 X 88	4	
32	101494	Air Filter Assembly	1	
33	101004	Seal, Ac Base	1	
34	101847	Cover, Ac Base	1	
35	100829	Pin, Dowel Ø10x10	2	
36	101115	Motor Assembly, 24V Solenoid Shift Starter	1	
37	1.16674.08110	Hex Small Flange Bolt, M8 X 110	2	
38	100937	Switch, Thermal Shutdown	1	
39	1.823.0306.1	Screw, M3x6	2	
40	2.08.039	Bolt, Drain	1	
41	2.03.023	Washer, Drain Bolt	2	
42	101014	Crankcase Component	1	
43	1.5789.0612	Hex Flange Bolt, M6x12	12	
44	61.120800.00	Diode Assembly, Engine Stop	1	
45	2.12.004	Grommet 9.5Mm	1	
46	100470	Air Board Assembly, Internal Oil Cooler	1	
47	717.080500.00	Air Guide, Outer Cylinder 1 Assembly	1	

#	Part Number	Description	Qty	
48	2.14.005	Key, Flywheel	1	
49	717.051101.04	Assembly, Crankshaft - Taper Pto	1	
50	2.03.026	Washer, Crankshaft Thrust	1	
51	101454	Camshaft Assembly	1	
52	717.050200.00	Assembly, Connecting Rod	2	
53	2.09.009	Retainer, Piston Pin	4	
54	100968	Pin, Piston, 17 X 53.8	2	
55	101426	Piston, 80Mm 1.5Mm Dish Ceramic Crown	2	
56	101511	Ring Assembly, Oil Control	2	
57	101508	Ring, Piston, 2nd	2	
58	101507	Ring, Top Piston	2	
59	45.110012.00	Bushing, Governor Gear	1	
60	2.03.053	Washer, Id6.2_od17_t0.8	1	
61	21.110011.00	Clip, Retaining	3	
62	61.110100.00	Gear Assembly, Governor	1	
63	2.03.054	Washer, Ø6.2 X Ø15 X 1	1	
64	45.110013.00	Shaft, Governor Gear	1	
65	1.5789.0620	Hex Flange Bolt, M6 X 20	3	
66	61.150300.00	Oil Filter Compl	1	
67	2.04.002	Location Pin 8 X 14	2	
68	100596	O-Ring 12 X 3.5	1	
69	100261	Gasket, Crankcase Cover	1	
70	100726	Tube, Oil Dipstick Assembly	1	
71	100268	Cover, Crankcase	1	
72	1.5789.0850	Hex Flange Bolt, M8 X 50	9	
73	2.11.010	Seal, Pto Oil	2	
74	61.030011.00	Plug, Crankcase Cover	1	
75	100699	Blade Assembly, Oil Dipstick	1	
76	1.308.9.5	Ball, Steel Check Valve	1	
77	61.150004.00	Spring, Compression	1	
78	61.151000.00	Pump Assembly, Oil	1	
79	1.70.0616	Screw, M6 X 16 Socket Head Cap	2	
80	100916	Filter, Oil	1	
81	100831	Switch, Low Oil Shut-Down 0.6 Bar	1	
82	1.16674.0625	Hex Small Flange Bolt, M6 X 25	4	
83	101719	Base Assembly, Oil Filter With Oil Cooler And Oil Pressure Switch	1	
84	100847	Clamp, Oil Hose	4	
85	100942	Hose, Oil Line	1	
86	100941	Hose, Oil Line	1	
87	2.07.004	O-Ring 12 X 2.5	2	
88	1.5789.0620	Hex Flange Bolt, M6 X 20	2	
89	101723	Oil Cooler Assembly, Internal Mount	1	
90	717.080600.00	Air Guide, Outer, Cylinder 2 Assembly	1	
91	1.5789.0608	Hex Flange Bolt, M6 X 8	2	
92	1.16674.0616	Hex Small Flange Bolt, M6 X 16	1	
93	2.04.005	Pin, 8X10 Location	1	
94	101478	Follower Assembly, Camshaft	1	
	1	101475	Follower Pivot Assembly, Camshaft	1
	2	2.03.021.1	Washer, Governor Shaft	4
	3	100485	Follower, Camshaft	2
	4	61.040019.01	Follower, Camshaft	2
	5	61.041001.00	Spring, Support	2
95	45.030200.00	Retainer, Oil Drain Hose	1	
96	2.06.013	Hose Clamp, 13.2mm	1	
97	45.032000.00	Hose, Oil Drain	1	

MAINTENANCE

#	Part Number	Description	Qty
98	1.276.6003.1	Bearing, Roller D35 X Id17 X 10	1
99	717.030026.01	Plug, Npt1/8-27 Hexagon Socket	1
100	2.04.004	Pin, 12X20 Location	4
101	100170	Bracket, Governor Spring	1
102	2.01.010	Bolt, Exhaust Stud	4
103	717.010003.00	Lift Strap	2
104	1.16674.0820	Hex Small Flange Bolt, M8 X 20	2
105	2.08.122	Bolt, Hex Flange M10 X 1.25	2
106	100179	Valve, Exhaust	2
107	717.040015.00	Shim, Valve Spring	2
108	101881	Oil Seal, Valve Stem	4
109	45.040003.00	Spring, Valve	4
110	45.040001.00	Retainer, Intake Valve	4
111	717.040202.00	Bracket, Rocker Arm	4
112	1.70.1.0816	Screw, M8 X 16 Socket Head Cap	4
113	22.040012.00	Adjusting, Lash	4
114	717.040200.02	Rocker Arm	4
115	100226	O-Ring, Rocker Cover	2
116	1.5789.0625	Hex Flange Bolt, M6 X 25	8
117	100347	Cap, Oil Fill Assembly	1
	1 717.020005.00	Seal, Cap Oil Fill	1
	2 717.020004.00	Cap, Oil Fill	1
118	100515	Rocker Cover Assembly, Oil Fill	1
119	21.040021.00	Jam Nut, M6 X 0.5mm Pitch	4
120	1.6170.08	Hex Nut, Gb6170 M8	4
121	717.040016.00	Sleeve, Rocker Arm	4
122	2.08.086	Bolt, M8 X 1.25 Hhw Special	4
123	717.040005.00	Push Rod	4
124	45.040002.00	Valve, Intake	2
125	2.08.014	Bolt, Hex Flange M10 X 80	6
126	717.080300.02	Air Guide Assembly, Inner Cyl #2	1
127	717.010100.20	Cyl Head #2 Purchased Assembly	1
128	100841	Gasket Assembly, Cylinder Head	2
129	717.010100.10	Cyl Head #1 Purchased Assembly	1
130	717.080300.01	Air Guide, Inner Cylinder 1 Assembly	1
131	100270	Clamp, Breather Tube	1
132	2.15.008	Spark Plug, F7RTC	2
133	100244	Rocker Cover Assembly	1
134	100263	Spring, Link Take Up	1
135	100223	Link, Governor	1
136	2.08.107	Bolt, Governor Arm	1
137	2.03.019	Washer, Id8.2-Od17-T0.8	1
138	61.110008.00	Pin, Shaft	2
139	1.5801.0810	Bearing, Roller	2
140	1.97.1.08	Washer Ø8	2
141	61.110001.00	Shaft, Governor	1
142	100432	Spring, Governor	1
143	100178	Lever, Governor Arm	1
144	1.6177.06	Nut, M6 Hexagon Flange	1
145	2.11.006	Shaft Oil Seal	1

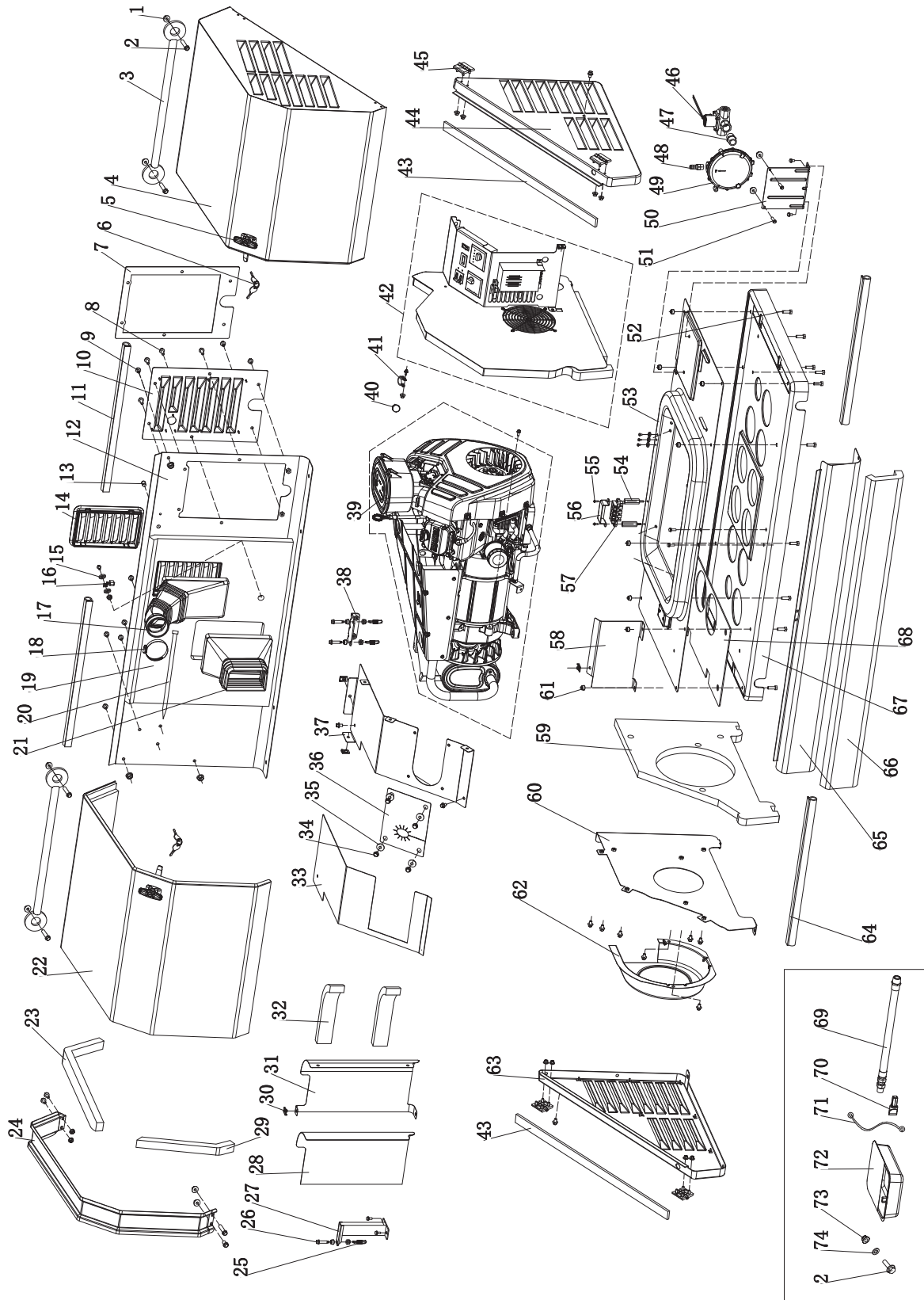


MAINTENANCE

PAGE INTENTIONALLY LEFT BLANK

MAINTENANCE

ENCLOSURE AND ASSEMBLIES



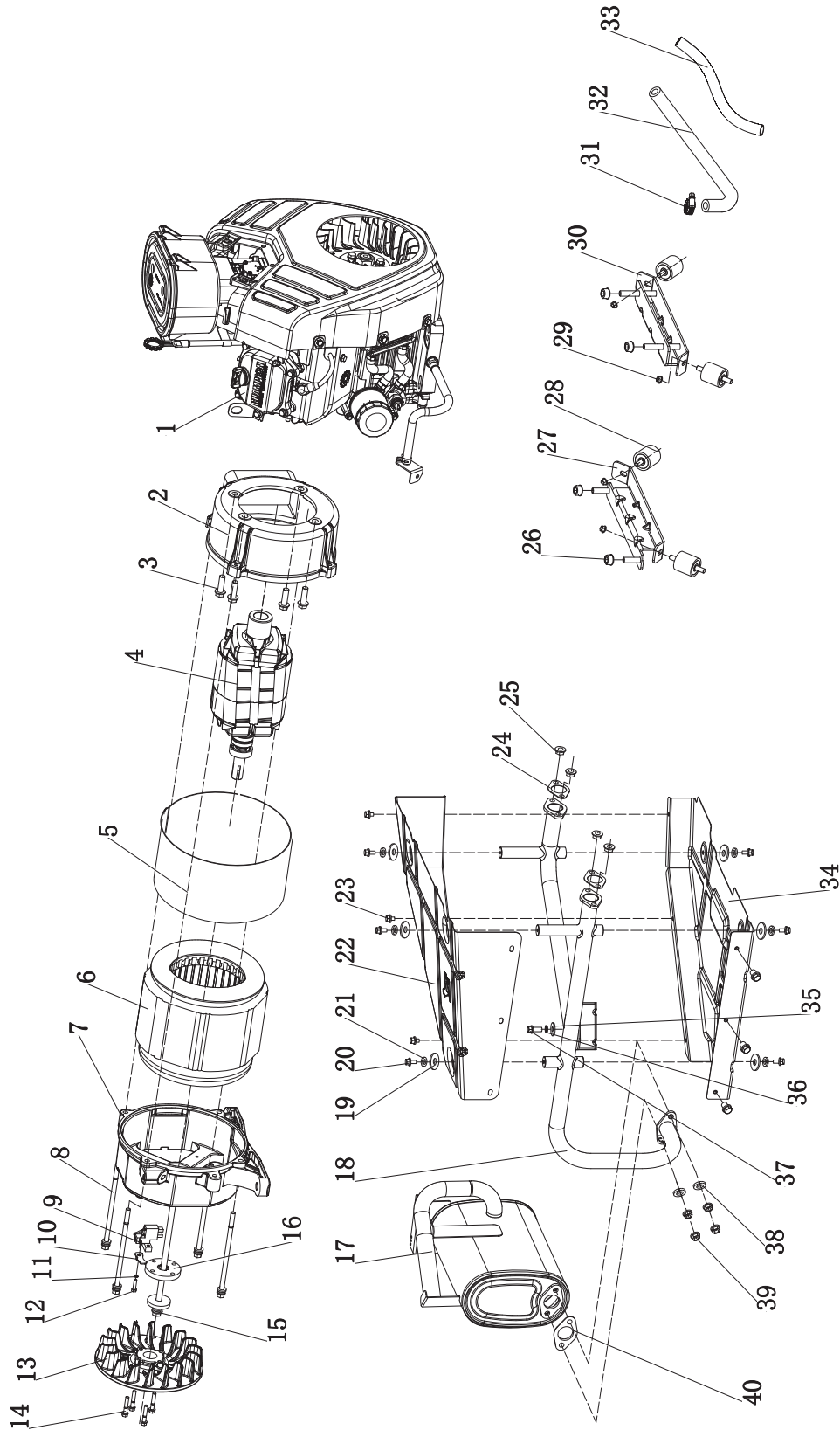
MAINTENANCE

#	Part Number	Description	Qty
1	1.6177.1.06	Flange Lock Nut M6	24
2	1.5789.0615	Flange bolt, M6 x 15	10
3	161.200507.00	Curb Chain Assembly, Cover	2
4	164.200500.01.24	Top Cover Assembly, Right, Silk Grey	1
5	161.200110.00	Hook Lock Assembly	2
6	161.200110.00.01	Key, Hook Lock	2
7	161.200021.16	Seal, Access Cover	1
8	1.16674.0820	Flange bolt, M8 x 20	9
9	1.16674.0812	Flange bolt, M8 x 12	26
10	161.200402.00.24	Access Cover, Electric Cabinet, Silk Grey	1
11	161.200109.03	Rubber Strip, 575 mm	2
12	164.200401.00.24	Rear Cover, Silk Grey	1
13	5.1460.015	Indicator Light, 24 v	1
14	161.192100.00	Supporter, Air Guide, Alternator	2
15	1.862.06	Toothed Lock Washer, Ø6	5
16	5.1560.000	Ground Wire Terminal, Ø6, UL	1
17	717.090004.21	Pipe, Air Cleaner	1
18	2.06.036	Clamp, Ø75	1
19	164.200021.00	Acoustic Panel, Rear Center Chamber	1
20	9.3410.02	Nylon Cable Ties, 5 x 500 mm	1
21	161.192300.00	Air Guide, Alternator	1
22	163.200500.00.24	Top Cover Assembly, Left, Silk Grey	1
23	161.200021.17	Seal Strip, Top Cover, Long, 625 x 50 x 25 mm	1
24	161.201600.02.1	Gutter, Black	1
25	161.100006.00	Spring, Muffler	3
26	2.08.119	Flange Bolt M8 x 35, Muffler	3
27	163.1010005.00.2	Supportor, Muffler, Bottom, Black	1
28	161.200021.13	Acoustic Panel, Muffler Cover, Front	1
29	161.200021.18	Seal Strip, Top Cover, Short, 50 x 320 x 25 mm	1
30	2.02.032	Cage Nut, M8	4
31	161.200017.03.24	Muffler Cover, Back, Silk Grey	1
32	161.200021.15	Foams, Muffler Cover, Back	2
33	163.200021.03	Acoustic Panel, Muffler Cover, top	1
34	1.5789.0612	Flange Bolt, M6 x 12	8
35	2.03.004	Washer, Ø24 x Ø6.5 x 1.5	4

#	Part Number	Description	Qty
36	163.200017.01	Thermal Baffle	1
37	163.200017.00.24	Muffler Cover, Top, Silk Grey	1
38	161.1010005.00.2	Supportor, Muffler, Top, Black	1
39	100237.901	Generator Assembly	1
40	2.06.035	Clamp, Ø23.5	1
41	2.06.037	Clamp, Ø28	1
42	100237.902	Control Panel Assembly	1
43	161.200021.02	Seal Strip, Right/Left Cover	2
44	161.200300.00.24	Right Cover Assembly, Silk Grey	1
45	161.201900.00	Hinge	4
46	161.134100.00	Solenoid Valve, LPG/NG	1
47	161.133106.01	Nipple, NPT 3/4	1
48	161.133106.00	Nipple, NPT 3/8	1
49	161.136000.00	Pressure Reducing Valve, LPG/NG	1
50	161.200018.00	Supportor, Pressure Reducing Valve	1
51	1.5789.0629	Flange bolt, M6 x 29	2
52	1.5783.0825	Bolt, M8 x 25	8
53	161.200601.00.24	Base Center, Silk Grey	1
54	2.08.133	Male Female bolt, M5 x 50	2
55	1.16674.0516	Flange bolt, M5 x 16	2
56	161.210018.00	Cover, Terminal Block	1
57	161.210011.02	Terminal Block, 60A, 90° Angle	1
58	161.200017.01.24	Muffler Cover, Front, Silk Grey	1
59	163.200021.00	Acoustic Panel, Left Firewall	1
60	163.200005.01.24	Firewall, Left, Silk Grey	1
61	1.6177.1.08	Flange Lock Nut, M8	21
62	163.192300.00.2	Fan Cover, Rotor, Black	1
63	161.200200.00.24	Left Cover, Silk Grey	1
64	161.200109.02	Rubber Strip, 530 mm	2
65	161.200101.00.24	Front Cover, Silk Grey	1
66	161.200021.11	Foams, Front Cover	1
67	161.201800.00	Plastic Pallet, PP	1
68	163.200021.10	Foams, Heat Insulation	1
69	163.130021.01	LPG Hose With NPT3/4 Nipple	1
70	9.1120.001	Screwdriver, Jet	1
71	5.1900.074	Battery Jump Wire, 275 mm, 6 AWG	1
72	161.200023.00.1	Oil Container, Black	1
73	1.6182.06	Lock Nut M6, Flange	4
74	1.97.1.06	Washer, Ø6	4

MAINTENANCE

/// ALTERNATOR AND EXHAUST SYSTEM



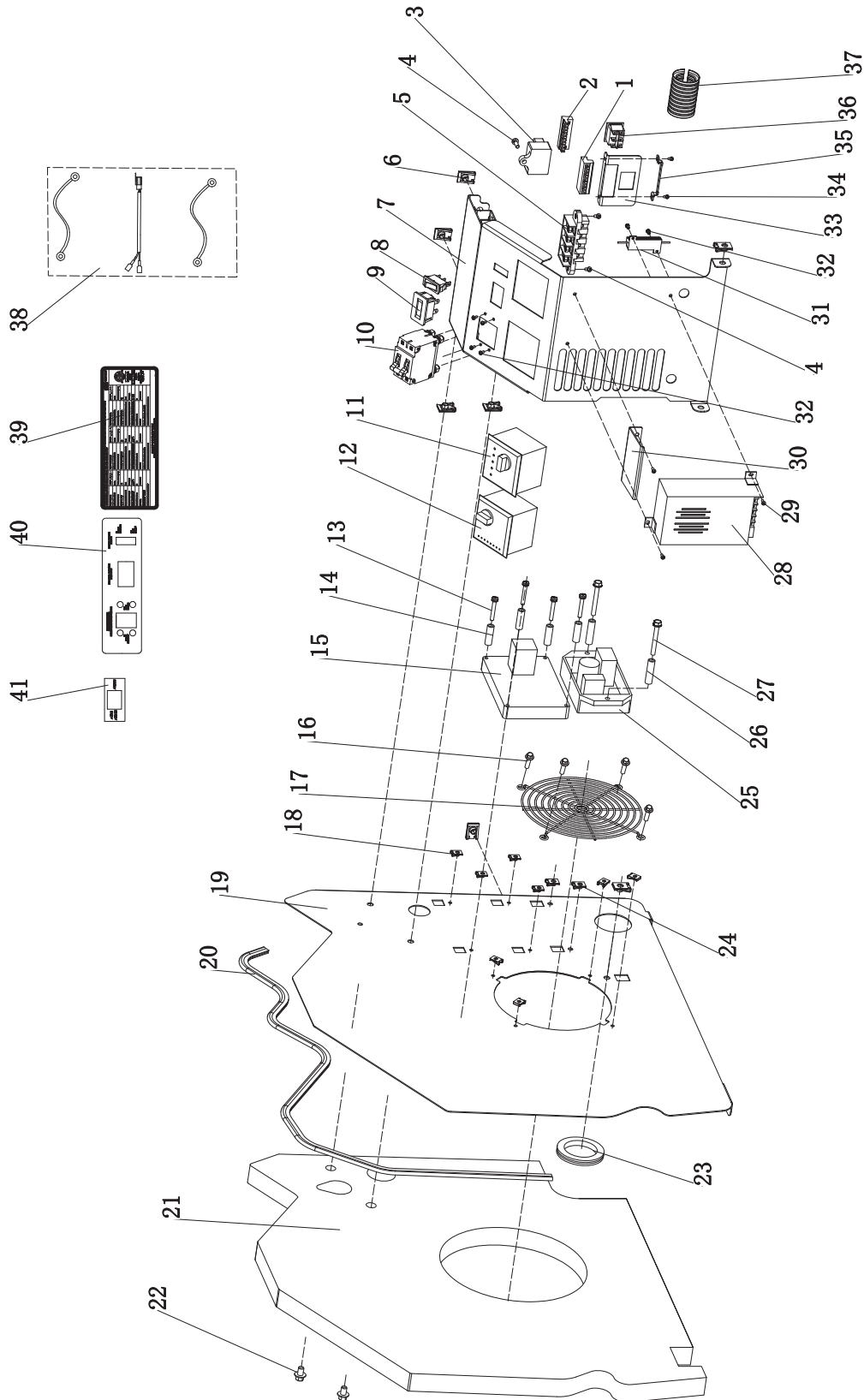
MAINTENANCE

#	Part Number	Description	Qty
1	100206	Engine	1
2	161.190007.00	Front Housing, Stator	1
3	1.5789.1022	Flange Bolt, M10 x 22	4
4	164.191100.00	Rotor Component, Ø135 x 170	1
5	164.191002.00	Stator Cover	1
6	164.191200.00	Stator Assembly, Ø230 x 170	1
7	161.190002.00	End Housing, Stator	1
8	2.08.131	Bolt Assembly, M8 x 220	4
9	161.190300.00	Carbon Brush Assembly	1
10	122.190004.01	Pinch, Carbon Brush	1
11	1.93.05	Lock Washer, Ø5	1
12	1.5783.0520	Bolt, M5 x 20	1
13	164.190001.00	Rotor Fan, 14 KW Aluminum	1
14	1.5789.0629	Flange Bolt, M6 x 29	4
15	2.08.130	Flange Bolt Assembly, M10 x385	1
16	164.190019.00	Flange Plate, Fan	1
17	163.101000.00	Muffler Assembly	1
18	164.101001.00	Exhaust Pipe	1
19	2.03.004	Washer, Ø24 x Ø6.5 x 1.5	6

#	Part Number	Description	Qty
20	1.5789.0615	Flange bolt, M6 x 15	6
21	1.93.06	Lock Washer, Ø6	6
22	164.080009.00.2	Air Guide, Muffler Pipe, Above	1
23	1.9074.17.0612	Screw/Washer Assembly, M6 x 12	6
24	717.100001.00	Gasket, Exhaust Pipe	2
25	1.6187.1.08	Nut, M8	4
26	1.6177.1.10	Flange Lock Nut, M10	4
27	161.201600.01	Supportor, End Housing	1
28	161.200605.00	Motor Mount	4
29	1.6177.1.08	Flange Lock Nut, M8	4
30	164.201600.00	Supportor, Engine	1
31	2.06.015	Clamp, Ø16-Ø25	1
32	163.130021.00	Pipe , LPG/NG	1
33	5.1330.019	Sheath, LPG Hose, PVC, Ø25 x 200	1
34	164.080009.01.2	Air Guide, Muffler Pipe, Bottom	1
35	1.96.08	Washer, Ø8	1
36	1.93.08	Lock Washer, Ø8	1
37	1.16674.0825	Flange Bolt, M8 x 25	1
38	1.7244.10	Lock Washer, Ø10	2
39	1.6187.1.10	Nut, M10	4
40	161.101002.00	Gasket, Muffler	1

MAINTENANCE

/// CONTROL PANEL



MAINTENANCE

#	Part Number	Description	Qty
1	5.1600.010	Connector, Ten Holes, Male	1
2	5.1610.010	Connector, Ten Holes, Female	1
3	5.1810.007	Over Voltage Protector	1
4	1.818.0514	Screw, M5 x 14	3
5	161.210011.02	Terminal Block, 60A, 90° Angle	1
6	2.02.032	Cage Nut, M8	7
7	163.200004.00.24	Cover, Electric Cabinet, Silk Grey	1
8	5.1000.006.3	Switch, UL, Red	1
9	5.1420.002	Hour Meter	1
10	5.1241.965	65Amp Circuit Breaker, Double Pole, UL	1
11	5.1850.004	ATS Controller, ATS100	1
12	5.1850.003.Y	Generator Controller,100666Y	1
13	1.5789.0550	Flange Bolt, M5 x 50	4
14	2.13.028	Bushing, Ø5.5 x Ø14 x 25	4
15	5.1850.005	Relay Module, Engine	1
16	2.08.068	Flange Bolt, M5 x 13	4
17	161.200020.00	Grille	1
18	2.02.030	Cage Nut M5	8
19	163.200005.00.24	Firewall, Right, Silk Grey	1
20	163.200109.00	Rubber Strip, 1040 mm	1
21	164.200021.01	Foams, Right Firewall	1

#	Part Number	Description	Qty
22	1.16674.0812	Flange Bolt, M8 x 12	3
23	163.210003.00	Grommet, Wire	1
24	2.02.031	Cage Nut, M6	2
25	161.190200.00	AVR, TT91-15U	1
26	2.13.029	Bushing, Ø7 x Ø14 x 50	2
27	1.5789.0675	Flange Bolt, M6 x 75	2
28	5.1820.003	Charger, Battery, 24V	1
29	1.9074.4.0414.2	Screw, M4 x 14	3
30	163.200004.01.24	Cover, Charger, Silk Grey	1
31	5.1860.004	Electrical Resistance, GH-RX24-50W	1
32	1.9074.4.0306	Screw, M3 x 6	6
33	164.200018.00.24	Supportor, Switch, Silk Grey	1
34	1.823.0412	Screw, M4 x 12	2
35	161.210017.00	Supportor, Ten Holes, Connector	1
36	5.1000.008.1	Switch, Black	1
37	5.1320.017	Plastic Conduit, CSA, 50mm	1
38	100237.21.10.V1.0	Wire Assembly	1
39	164.230004.00.V1.0	Decal, Nameplate, 100237	1
40	163.230003.00.V1.0	Decal, Control Panel, 100136	1
41	100237.230005.00	Decal, ATS Selector	1