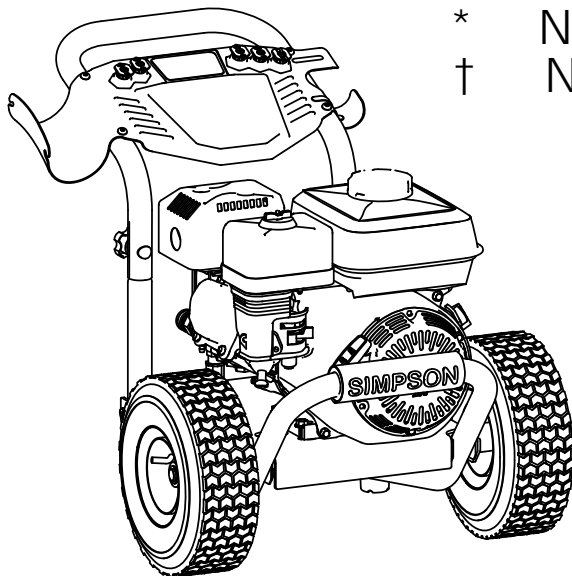


| ITEM | PART NO. | DESCRIPTION | QTY. |
|--------|----------|---|------|
| 1 | 7107250 | BASE FRAME, SVC ASSY W/ LABELS ALUMINUM | 1 |
| † 1.1 | | SUB-FRAME, ALUMINUM HORIZONTAL 11.75" C-C | 1 |
| † 1.2 | | BRACKET, AXLE HORIZONTAL | 2 |
| † 1.3 | | AXLE, Ø .625 X 20.10 (11.75" C-C FRAME) | 1 |
| † 1.4 | | BOLT, 5/16"-18 x 2 1/4" | 4 |
| † 1.5 | | NUT, 5/16"-18 NYLOCK | 4 |
| † 1.6 | | WASHER, SADDLE 5/16 X 1.0 X 0.060 | 2 |
| † 1.7 | | BOLT, 5/16"-18 x 3/4" | 1 |
| † 1.8 | | TUBE, BASE FRAME 11.75 FORMED AL 2.0 WALL | 1 |
| † 1.9 | | PLATE, HORIZONTAL BASE FRAME, AL 11.75" C-C | 1 |
| † 1.10 | | NUT, WHIZ 5/16"-18 | 1 |
| 2 | 7108435 | HANDLE, REAR SERVICE ASSEMBLY WITH LABELS | 1 |
| † 2.1 | | HANDLE TUBE, ALUMINUM 11.75" C-C | 1 |
| † 2.2 | | SCREW, TORX PANHEAD 1/4"-20 x 3/4" | 4 |
| 2.3 | 7108142 | DASHBOARD-NOZZLE HOLDER ASSEMBLY | 1 |
| 2.4 | 7107067 | HOLDER, NOZZLE 2PC RUBBER STRIP | 1 |
| 2.5 | 7107068 | HOLDER, NOZZLE 3PC RUBBER STRIP | 1 |
| 3 | 100465 | ENGINE, HONDA BLACK GX200T2OAPW NH1 | 1 |
| 4 | 7104174 | KEY, SHAFT 3/16" x 3/16" x 1 1/4" | 1 |
| 5 | 7107589 | CAT PUMP, SVC ASSY | 1 |
| † 5.1 | 7106274 | PUMP, CAT 4DNX25GSI | 1 |
| † 5.2 | | VALVE, THERMAL RELIEF 1/4" NPT(M) | 1 |
| † 5.3 | | FITTING, INLET GHT(F) X 3/8" NPT(M) | 1 |
| † 5.4 | | COUPLER, 3/8" OC-F x 3/8" NPTF | 1 |
| 6 | 7105013 | WHEEL, SERVICE KIT | 1 |
| † 6.1 | | POWER WASHER WHEEL, 4" x 10" BLK W/ 5/8" BRG | 2 |
| † 6.2 | | WASHER, 5/8" FLAT | 2 |
| † 6.3 | | CLIP, E-TYPE 0.625" x 0.042" | 2 |
| 7 | 7107262 | FOOT KIT, SERVICE KIT | 2 |
| † 7.1 | | FOOT, RECESSED RUBBER INSERT | 1 |
| † 7.2 | | SCREW, PANHEAD M6-1.0 X 25MM PHILLIPS MACHINE | 1 |
| 8 | 7103750 | MOUNTING KIT, ENGINE | 1 |
| † 8.1 | | BOLT, FLANGE 5/16"-18 x 1 3/4" HHFB | 4 |
| † 8.2 | | NUT, WHIZ 5/16"-18 | 4 |
| 9 | 7107590 | MOUNTING KIT, CAT PUMP | 1 |
| † 9.1 | | PLATE, KING BRUTE PUMP MOUNTING | 1 |
| † 9.2 | | WASHER, SPLIT-LOCK 5/16" RUST RESISTANT | 4 |
| † 9.3 | | BOLT, 5/16"-24 x 3/4" | 4 |
| † 9.4 | | WASHER, 3/8" SPLIT-LOCK | 4 |
| † 9.5 | | BOLT, 3/8"-16 x 1 1/4" | 4 |
| 10 | 7103279 | KNOB-BOLT ASSEMBLY (7103538, 7103563) | 2 |
| † 10.1 | | BOLT, SADDLE 5/16"-18 x 2" | 1 |
| † 10.2 | | KNOB, HANDLE 5/16-18 | 1 |
| 11 | 7105186 | HANDLE GRIP, SIMPSON BLACK W/ WHITE LETTERING | 1 |
| 12 | 7103743 | NOZZLE SET, 3.0 5PC 1/4" OC-M | 1 |
| 13 | 7108125 | GUN, 4500PSI 3/8OC(M) INLET X M22(F) OEM | 1 |
| 14 | 7103550 | LANCE, 16" W/ 1/4" OC-F x M22(M) | 2 |
| 15 | 7105645 | HOSE, CRIMP MFG 5/16 X 25 X3600 2% PT OC | 1 |
| 16 | 7102207 | SOAP HOSE AND FILTER KIT | 1 |
| * 17 | 7102045 | TOOL, NOZZLE CLEANING, UNIVERSAL | 1 |
| * 19 | 7107725 | MANUAL, OPERATORS (ALHC 3228) | 1 |
| * 20 | 7107325 | BOX, SHIPPING MULTI UNIT PLAIN KRAFT | 1 |

* NOT SHOWN

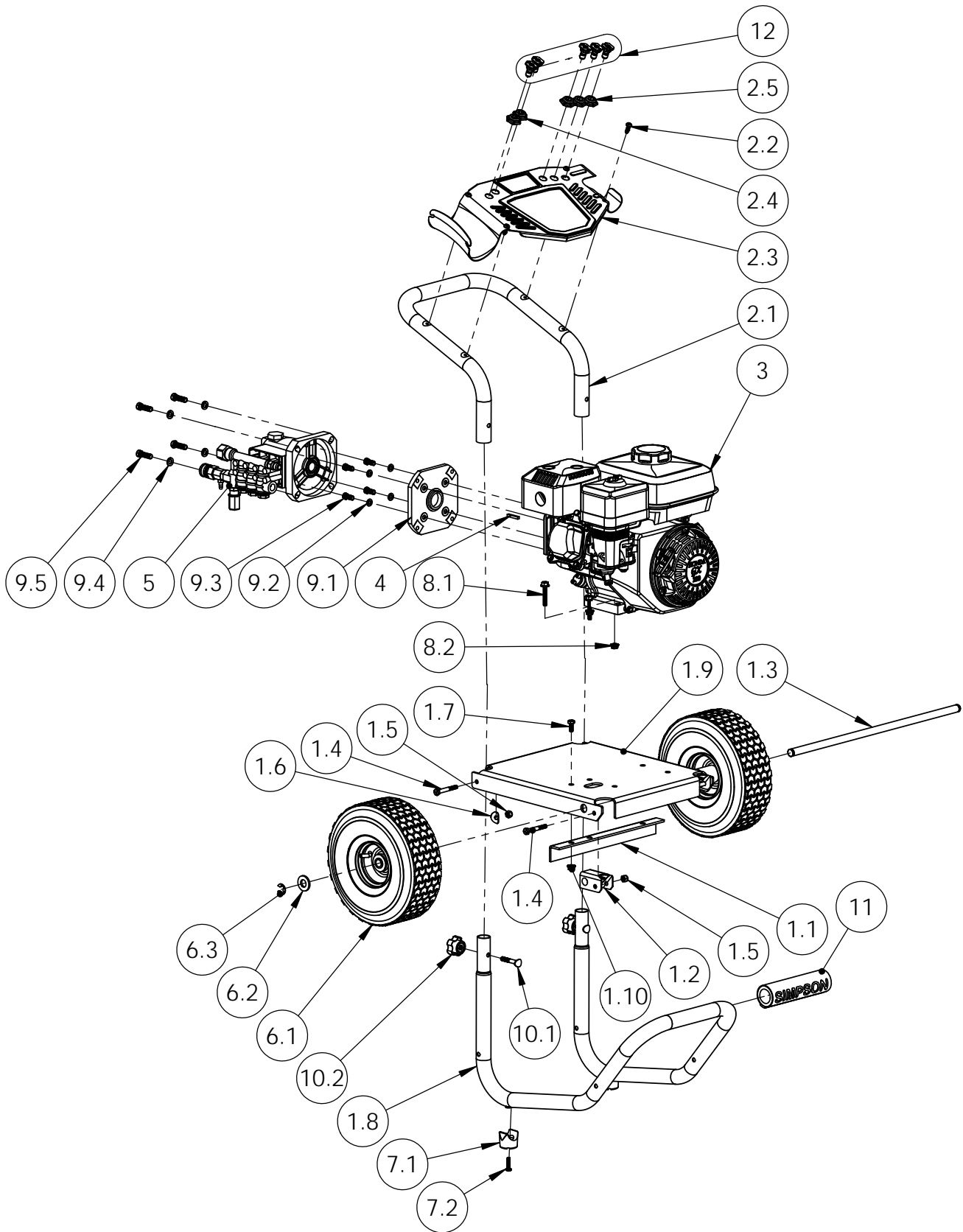
† NOT SOLD SEPERATELY



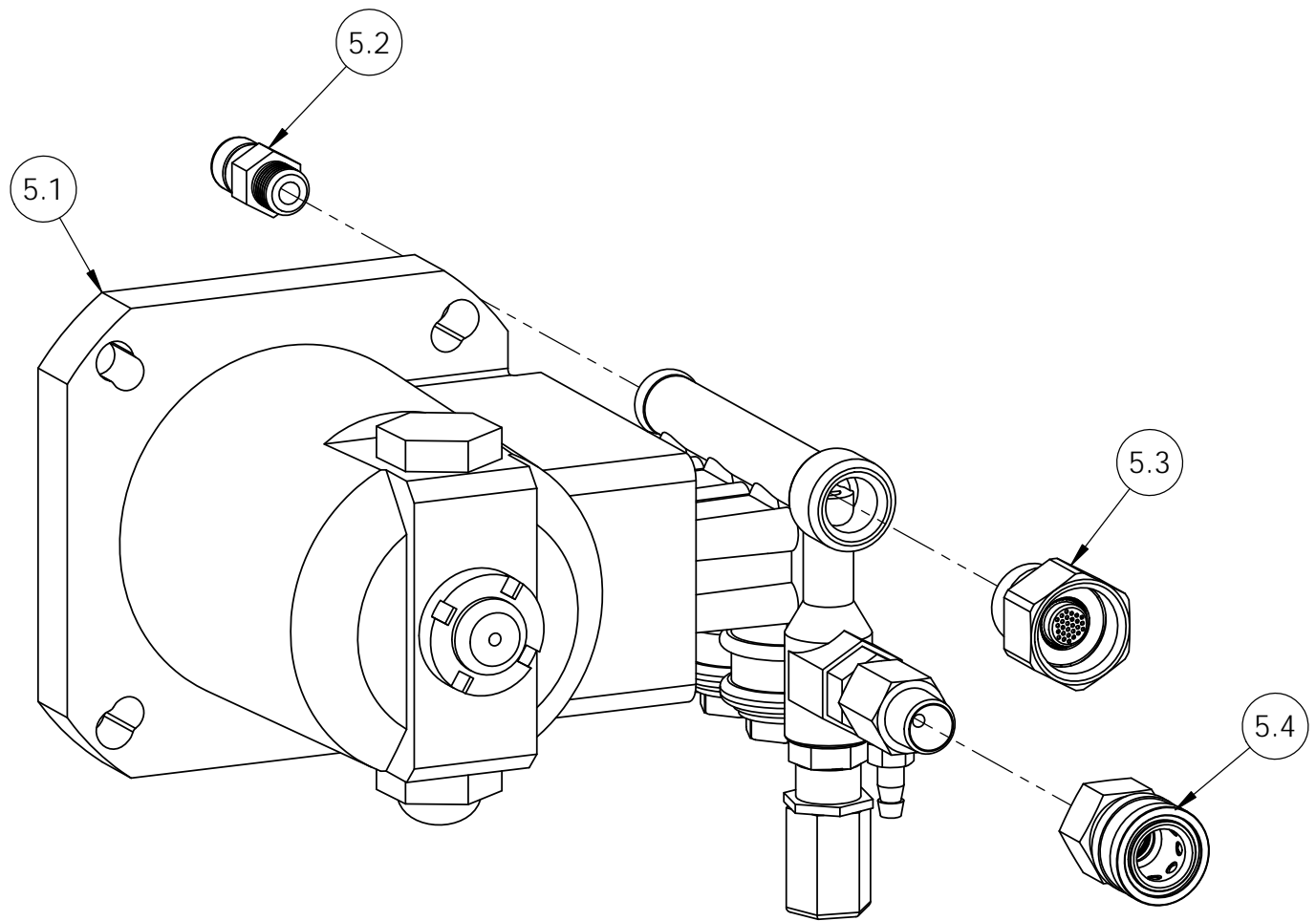
| PUMP INFORMATION TABLE | | | |
|------------------------|------------|---------------|--------------|
| MACHINE SERIAL NO. | PUMP MODEL | PUMP PART NO. | PUMP KIT NO. |
| | 4DNX25GSI | 7106274 | 7107589 |

ONLY THE LATEST VERSION OF THE PUMP IS AVAILABLE FOR REPLACEMENT

| NAME | DATE | FNA-GROUP | |
|--|-----------|---|----------------|
| DRAWN: KDB | 7/15/2015 | 1265 INDUSTRIAL STREET, DECATUR, AR 72722 | |
| CHECKED: | | TITLE: | |
| ENG APPR: | | ALH3228-S SIMPSON 3200PSI @ 2.8GPM | |
| MFG APPR: | | | |
| O.A. APPR: | | | |
| SERVICE APPR: | | | |
| PROPRIETARY AND CONFIDENTIAL | | SIZE: A | DWG. NO: 60735 |
| THE INFORMATION CONTAINED IN THIS DRAWING IS THE SOLE PROPERTY OF FNA-GROUP. ANY REPRODUCTION IN PART OR AS A WHOLE WITHOUT THE WRITTEN PERMISSION OF FNA-GROUP IS PROHIBITED. | | SCALE: N/A | ECN# DC15-0085 |
| | | SHEET 1 OF 6 | |

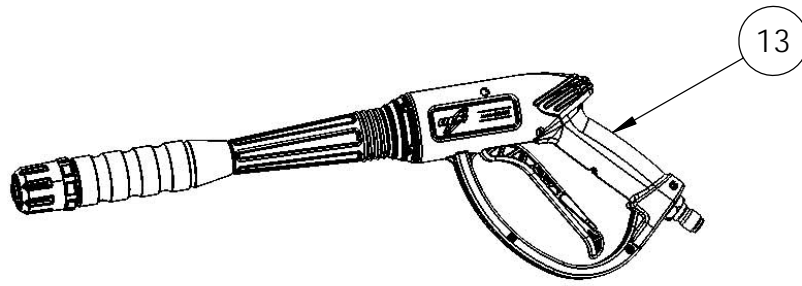


| | | |
|------------|----------------|--------------|
| SIZE | DWG. NO. | REV. |
| A | 60735 | A |
| SCALE: N/A | ECN# DC15-0085 | SHEET 2 OF 6 |

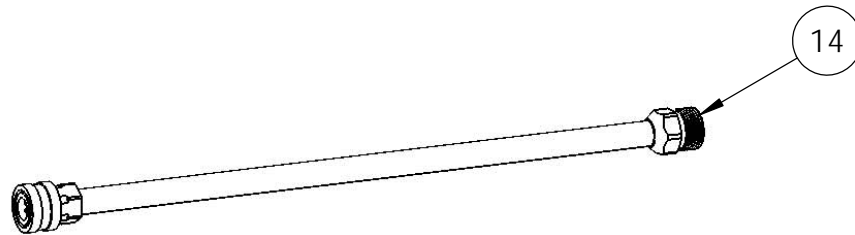


CAT PUMP, SVC ASSY
PART NO. 7107589

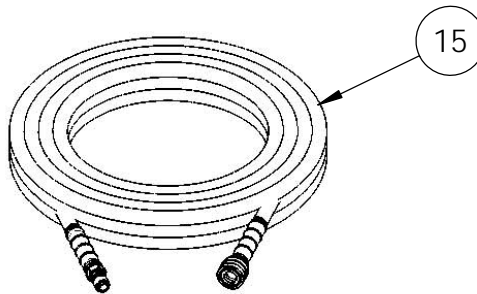
| ITEM NO. | PART NO. | DESCRIPTION | QTY. |
|----------|----------|-------------------------------------|------|
| 5.1 | 7106274 | PUMP, CAT 4DNX25GSI | 1 |
| 5.2 | 7101359 | VALVE, THERMAL RELIEF 1/4" NPT(M) | 1 |
| 5.3 | 7100355 | FITTING, INLET GHT(F) X 3/8" NPT(M) | 1 |
| 5.4 | 7100019 | COUPLER, 3/8" QC-F x 3/8" NPTF | 1 |



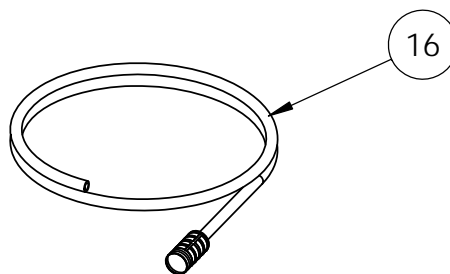
GUN, 4500PSI 3/8QC(M) INLET X M22(F) OEM
PART NO. 7108125



LANCE, 16" W/ 1/4"QC-F x M22(M)
PART NO. 7103550



HOSE, CRIMP MFG 5/16 X 25 X3600 2% PT QC
PART NO. 7105645



SOAP HOSE AND FILTER KIT
PART NO. 7102207

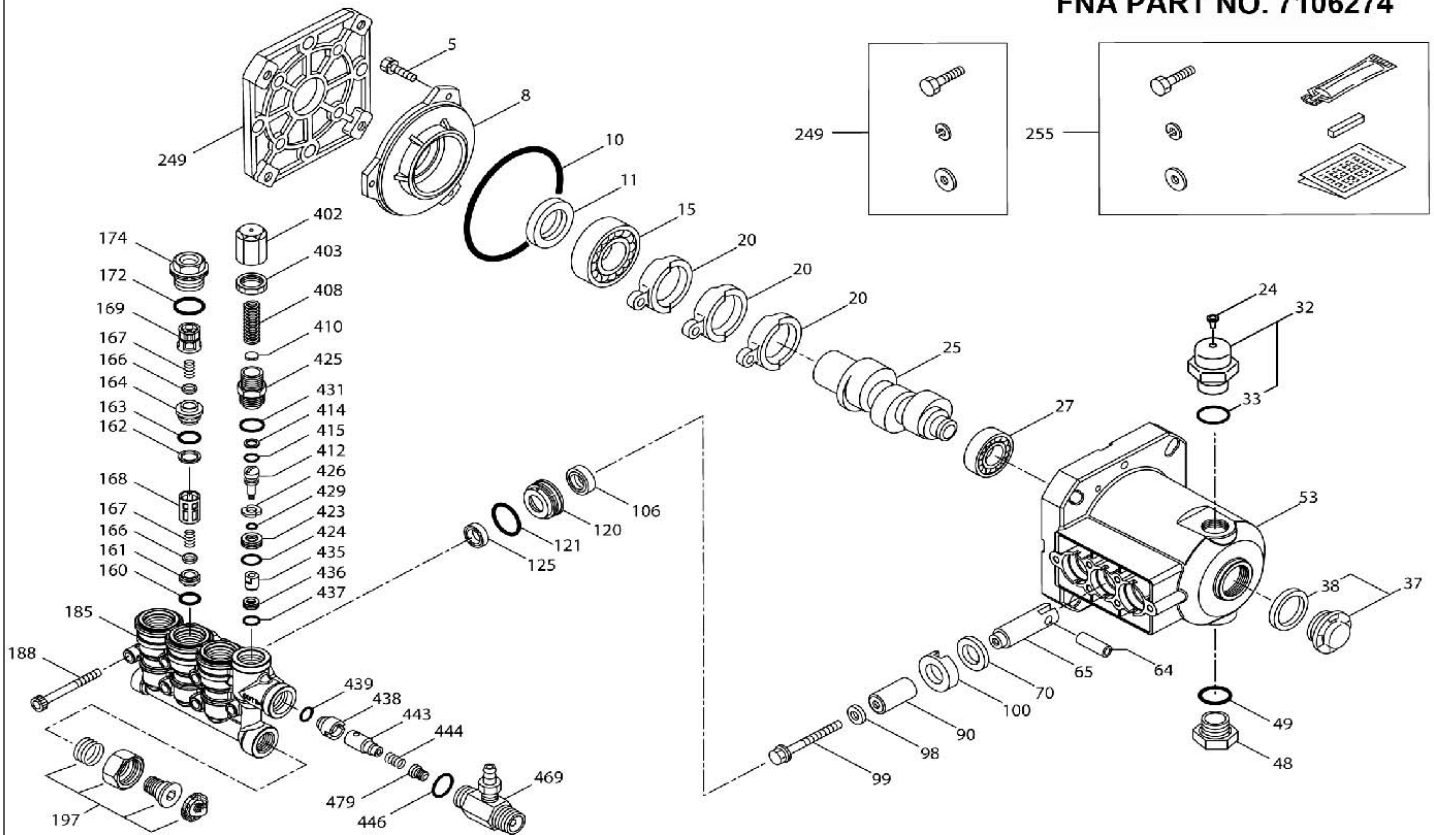
EXPLODED VIEW

July 2012

PLUNGER PUMP MODELS

4DNX25GSI, 4DNX27GSI

FNA PART NO. 7106274



PARTS LIST

| ITEM | PART NO. | DESCRIPTION | QTY |
|------|----------|---|-----|
| 5 | 7103819 | SCREW HH SEMS (M6 X 14) | 3 |
| 8 | 7103820 | COVER, BEARING | 1 |
| 10 | 7102614 | O-RING, BEARING COVER 70D | 1 |
| 11 | 7102813 | SEAL, OIL 70D | 1 |
| 15 | 7102624 | BEARING, BALL INNER | 1 |
| 20 | 7103824 | ROD, CONNECTING | 3 |
| 24 | 7106430 | PLUG, OIL CAP | 1 |
| 25 | 7103826 | CRANKSHAFT, 3450 RPM, 3/4" 6.8MM STROKE | 1 |
| 25 | 7105354 | CRANKSHAFT, 3450 RPM, 3/4" 6.3MM STROKE | 1 |
| 27 | 7103828 | BEARING, BALL INNER | 1 |
| 32 | 7102604 | CAP, OIL FILLER WITH O-RING | 1 |
| 33 | 7102617 | O-RING, OIL FILL CAP | 1 |
| 37 | 7103056 | GAUGE, OIL BUBBLE WITH GASKET | 1 |
| 38 | 7102970 | GASKET, FLATOIL GAUGE | 1 |
| 48 | 7102787 | PLUG, DRAIN | 1 |
| 49 | 7102617 | O-RING, DRAIN PLUG | 1 |
| 53 | 7106425 | CRANKCASE | 1 |
| 64 | 7103830 | PIN, CROSSHEAD | 3 |
| 65 | 7103831 | ROD, PLUNGER | 3 |
| 70 | 7102804 | SEAL, OIL CRANKCASE, 70D | 3 |
| 90 | 7103542 | PLUNGER CERAMIC | 3 |
| 98 | 7101703 | WASHER, SEAL | 3 |
| 99 | 7103833 | RETAINER, PLUNGER (M6 X 35) | 3 |

| ITEM | PART NO. | DESCRIPTION | QTY |
|------|----------|--|-----|
| 100 | 7102925 | RETAINER SEAL | 3 |
| 106 | N/A | SEAL, LPS WITH S-Spg | 3 |
| 120 | 7106427 | CASE, SEAL | 3 |
| 121 | 7102610 | O-RING, SEAL CASE | 3 |
| 125 | 7106428 | SEAL, HPS | 3 |
| 160 | N/A | O-RING, INLET SEAT | 3 |
| 161 | N/A | SEAT, INLET | 3 |
| 162 | 7102945 | BACK-UP-RING, DISCHARGE SEAT | 3 |
| 163 | 7102946 | O-RING, DISCHARGE SEAT, 70D | 3 |
| 164 | N/A | SEAT, DISCHARGE | 3 |
| 166 | N/A | VALVE | 6 |
| 167 | 7102923 | SPRING | 6 |
| 168 | 7102812 | RETAINER, SPRING, INLET | 3 |
| 169 | N/A | RETAINER, SPRING, DISCHARGE | 3 |
| 172 | N/A | O-RING, VALVE PLUG - 90D | 3 |
| 174 | 7106429 | PLUG, VALVE WITH O-RING | 3 |
| 185 | 7106430 | HEAD, MANIFOLD WITH INTEGRAL REGULATORY BODY | 1 |
| 188 | 7106431 | SCREW, (M6 X 60) | 6 |
| 197 | 7103839 | ASSY, GH, 3/8" | 1 |
| 249 | 7103840 | ASSY, ADAPTOR MOUNT | 1 |
| 255 | 7103841 | ASSY, BOLT MOUNT | 1 |
| 283 | 7106432 | KIT, OIL DRAIN | 1 |
| 300 | 7106433 | KIT, SEAL (98, 106, 121, 125) | 1 |
| 310 | 7106334 | KIT, VALVE (160-164, 166-169, 172) | 1 |

INTEGRAL UNLOADER

SPECIFICATIONS

| | U.S. Measure | Metric Measure |
|----------------------|--------------|----------------|
| Flow..... | 3.0 gpm | (11.4 lpm) |
| PSI Range..... | 100-2850 psi | (7-196 bar) |
| Inlet Port | 3/4" GHF | (3/4" GHF) |
| Discharge Port | M18 x 1.0 | (M18 x 1.0) |

UNLOADER TYPE

FNA PART NO 7106274

An integral unloader with built-in by-pass is part of the discharge manifold to provide system pressure regulation and pump protection. This pump also includes a fixed chemical injector for chemical application.

OPERATION:

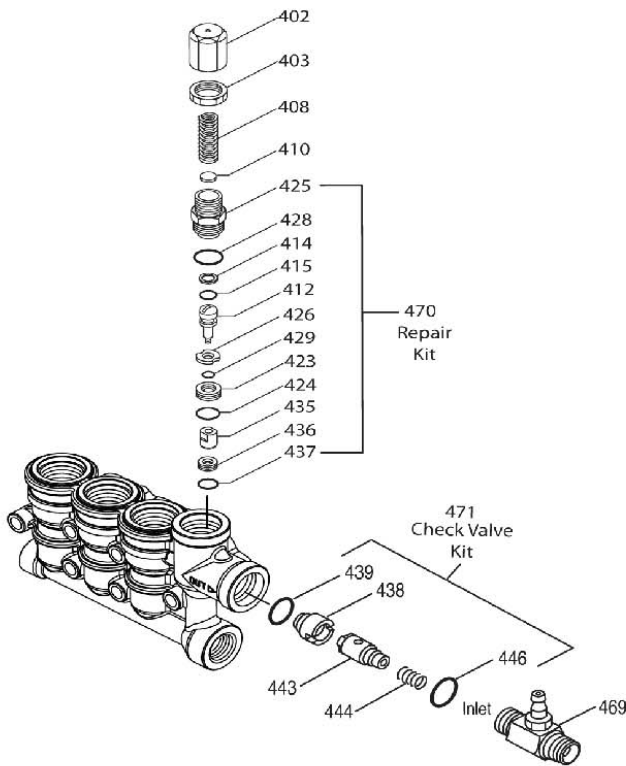
Pump should be purged of air before commencing operation. Liquid must flow through the pump without discharge restriction to assure full system pressure is reached.

Install a pressure gauge close to the manifold head of the pump to assist in setting system pressure and to periodically monitor system pressure.

Setting and adjusting the regulator pressure must be done with the system turned on. Start the system with the unloader backed off to the lowest pressure setting (counterclockwise direction). Squeeze the trigger and read the pressure on the gauge at the pump. Do not read pressure at the gun or nozzle. If more pressure is desired, turn adjusting cap one quarter turn in a clockwise direction. Squeeze the trigger and read the pressure. Repeat this process until the desired system pressure is reached. Thread locking nut up to adjusting cap.

SERVICE:

The unloader should be serviced on the same schedule as the seals in the pump. Refer to 4DNX Service Manual for start-up, servicing of seals and valves, torque requirements and diagnosis and maintenance chart.



PARTS LIST

| ITEM | PART NO. | DESCRIPTION | QTY |
|------|----------|---|-----|
| 402 | 7103842 | CAP, ADJUSTING | 1 |
| 403 | 7103843 | NUT, LOCK (M18 X1) | 1 |
| 408 | 7103544 | SPRING, PRESSURE | 1 |
| 410 | 7103845 | RETAINER, SPRING | 1 |
| 412 | N/A | STEM, PISTON | 1 |
| 414 | N/A | BACK-UP RING, PISTON STEM | 1 |
| 415 | N/A | O-RING, PISTON STEM - 70D | 1 |
| 423 | N/A | RETAINER, VALVE | 1 |
| 424 | N/A | O-RING, VALVE RETAINER (OUTER) - 70D | 1 |
| 425 | N/A | RETAINER, PISTON | 1 |
| 426 | N/A | WASHER | 1 |
| 428 | N/A | O-RING, PISTON RETAINER - 80D | 1 |
| 429 | N/A | O-RING, VALVE RETAINER (INNER) - 80D | 1 |
| 435 | N/A | VALVE | 1 |
| 436 | 7103846 | SEAT | 1 |
| 437 | N/A | O-RING SEAT - 70D | 1 |
| 438 | 7101617 | SEAT | 1 |
| 439 | N/A | O-RING, CHECK VALVE SEAT 70D | 1 |
| 443 | N/A | VALVE, CHECK | 1 |
| 444 | 7103048 | SPRING, CHECK VALVE | 1 |
| 446 | 7103851 | O-RING, BODY - 80D | 1 |
| 468 | 7103541 | KIT, O-RING | 1 |
| 469 | 7101616 | INJECTOR, FIXED CHEMICAL | 1 |
| 470 | 7106435 | KIT, REPAIR (412, 414, 415, 423-426, 428, 429, 435-437) | 1 |
| 471 | 7106436 | KIT, REPAIR (438, 439, 443, 444, 446) | 1 |

7332 FIXED CHEMICAL INJECTOR

SPECIFICATIONS

| | U.S. Measure | Metric Measure |
|----------------------|---------------|-------------------|
| Flow..... | 3.0 gpm | (11.4 lpm) |
| Nozzle Orifice..... | 2.1 mm | (2.1 mm) |
| Hose Barb..... | 1/4" | (1/4") |
| Inlet Port | M18 x 1.0 | (M18 x 1.0) |
| Discharge Port | 3/8" NPTM | (3/8" NPTM) |
| Weight | 5.3 oz. | (0.15kg) |
| Dimensions | 2 x 1 x 1.75" | (52 x 25 x 45 mm) |

CHEMICAL INJECTOR PERFORMANCE CHART

| Orifice Size | Maximum Injecting Pressure | Maximum Chemical Draw | Pressure Drop Across Injector At System Pressure (2850 psi) |
|--------------|----------------------------|-----------------------|---|
| 2.1 mm | 250 psi | 37.2 oz/min | 141 psi |

Optimum performance of chemical injector occurs with 35 ft. high pressure hose and a minimum 3/8" I.D. The type of hose, extended lengths, reduced I.D. and fittings may create back pressure in excess of the low pressure nozzle rating and prevent the injector from drawing chemical. See hose friction loss Chart in Service Manual. **Deduct hose friction loss from above low psi nozzle. Contact Cat Pumps for assistance with other options.**

CAUTION: Deduct the pressure drop shown in the performance chart from your desired system pressure to arrive at the maximum high pressure nozzle rating. This is essential to avoid over-pressurizing the pump.