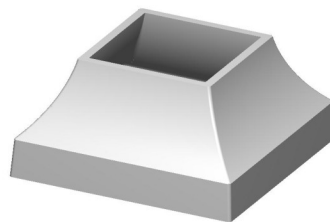


EZ POST BASE COVER SPECIFICATION SHEET

Alloy	Aluminum 356 T6
Weight	1.05 lbs.
Structural	n/a
Length	5-13/16 in.
Width	5-13/16 in.
Height	2-3/4 in.
Colors	White and Dark Bronze
Finish type	Powder coat
Warranty	10 year finish warranty
Residential	Yes
Commercial	Yes



Perimeter	11.75 in
Weight Each	1.05
Thickness	1/4 in.