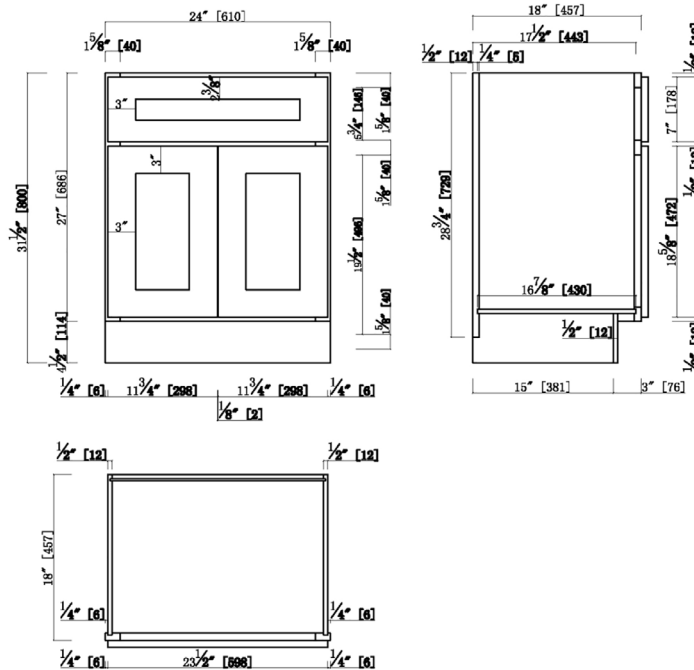


Brookings Unassembled 2-Door Shaker Vanity 24x31.5x18  
Espresso



SPECIFICATIONS

MATERIAL CONSTRUCTION:	Wood
ASSEMBLY REQUIRED:	Yes
TOOLS NEEDED FOR ASSEMBLY:	Phillips Screwdriver
ASSEMBLED DIMENSIONS:	31.5" H x 24" L x 18.74" D
ASSEMBLED WEIGHT:	47.79 lbs.
HINGE STYLE:	Concealed
DOOR STYLE:	2 Shaker Solid Wood Doors
DRAWER STYLE:	N/A
GLIDE STYLE:	N/A
FAKE DWR STYLE:	1 Fake Solid Wood
DWR #1 DIMENSIONS:	N/A
DWR CONSTRUCTION:	N/A
SHELF STYLE:	N/A
SHELF ADJUSTABILITY INCREMENTS:	N/A
SHELF MAX WEIGHT CAPACITY:	N/A
SHELF DIMENSIONS:	N/A
SHELF THICKNESS:	N/A
SHELF MATERIAL:	N/A

FRAME STYLE:	N/A
FACE FRAME MATERIAL:	Solid Wood
SIDES MATERIAL:	Plywood
BOTTOM MATERIAL:	Plywood
TOE KICK INSET WIDTH:	3"
BACK PANEL MATERIAL:	Plywood
BACK BRACE MATERIAL:	Solid Wood



WARRANTY:	1-Year limited warranty
CARB COMPLIANT:	CARB Phase 2
TITLE IV COMPLIANT:	Yes



TYPE:  
JOB:  
ORDER CODE:  
APPROVALS: