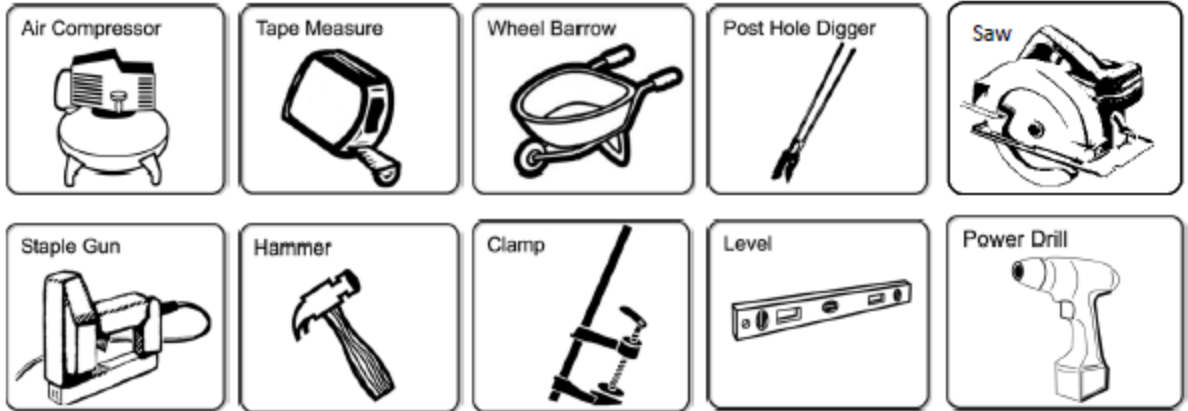


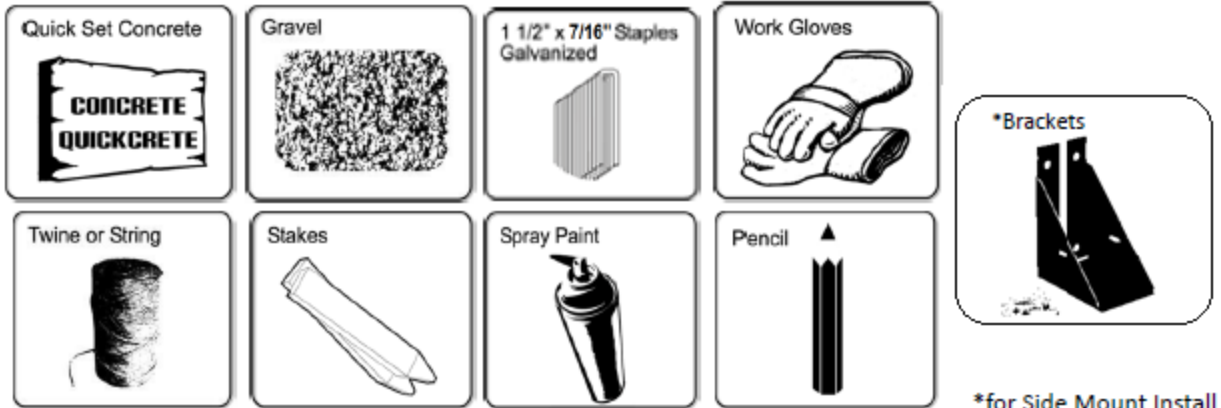
Composite Fencing Installation Instructions

Ranch Rail/Gothic System

Tools Needed:



Supplies:



*for Side Mount Install

Prior to installing fencing:

- ✓ Prior to digging, confirm location of underground utilities with local authorities.
- ✓ Apply for permits if required by local authorities and codes.
- ✓ Local zoning laws, neighborhood associations and/or historic districts may regulate size, type, placement and ability of fencing. Ensure compliance prior to installation.
- ✓ **Due to variation in picket width, minor adjustments to gapping may be required. Care should be taken to ensure that spacing does not result in too large of gap at the end posts**

For questions or more information please visit
www.fibronfencing.com

1. Planning:

- ✓ Determine total area to be fenced.
- ✓ Site-Built installation: Ensure the right amount of pickets and rails per section.

Note: Pre-Built Gothic Panels can only be installed on flat terrain.

- ✓ Make adjustments for odd widths at the back corners or build partial sections equally. Example: if you have 8 feet left in a run, consider building two 4ft sections rather than a 6ft and a 2ft.
- ✓ Determine the number of posts including gate post & gate location (if applicable).
- ✓ Installations are facilitated with the use of an air compressor or air driven staple gun. Recommended fasteners are 7/16" crown x 1 1/2" galvanized or stainless steel staples, minimum 18ga.

2. Layout (See diagram below)

2A. Establish total area to be fenced. Insert stakes 6" inside of proposed area extending an additional 3' laterally so as not to disturb string lines when digging post holes.

2B. Attach string line to staked area. Verify corners are square using the 3' x 4' x 5' method.

2C. Fence corners are determined by where strings intersect.

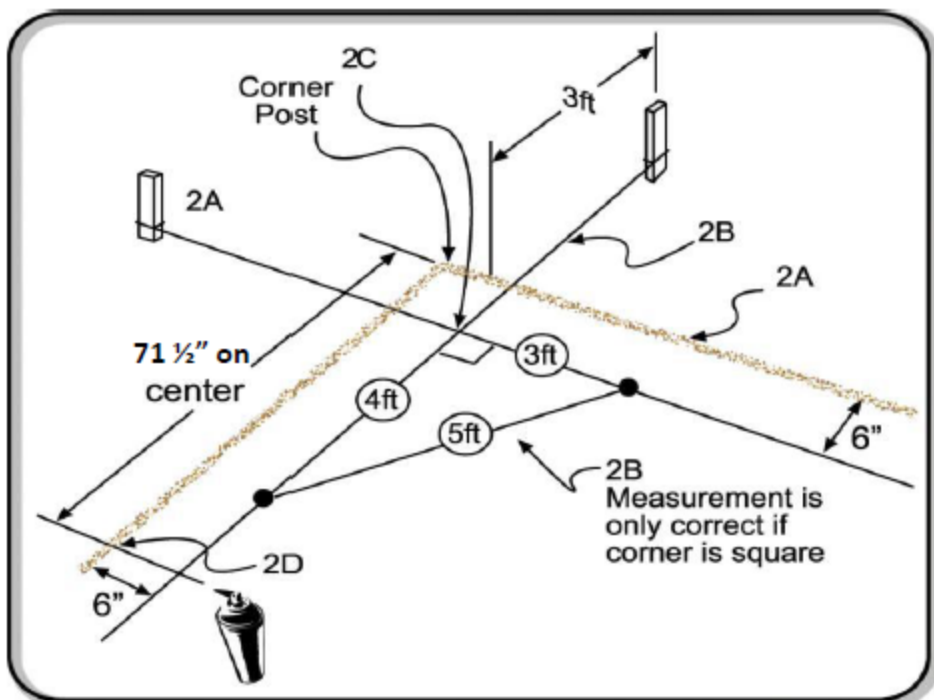
2D. Mark locations for subsequent posts starting with the first location and measuring the appropriate distance determined by install method.

Bracket Side Mount – 71 1/2" post center to post center

2E. Mark gate location and size.

2F. Place proper post at each location.

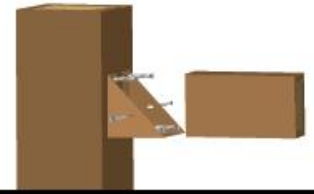
Tip: When marking measurements with spray paint, mark both the ground *and* string (see illustration).



RANCH RAIL

BRACKET MOUNT

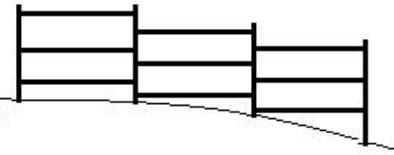
INSTALL INSTRUCTIONS BELOW
67 1/2" inside posts



A: MULTI-PURPOSE POSTS



B: CROSS RAILS



* For sloping: step brackets down

A POSTS



1 Dig Hole :
Dig hole 12" wide x 26" deep



2 Add Gravel :
Add 4" gravel (see chart below)



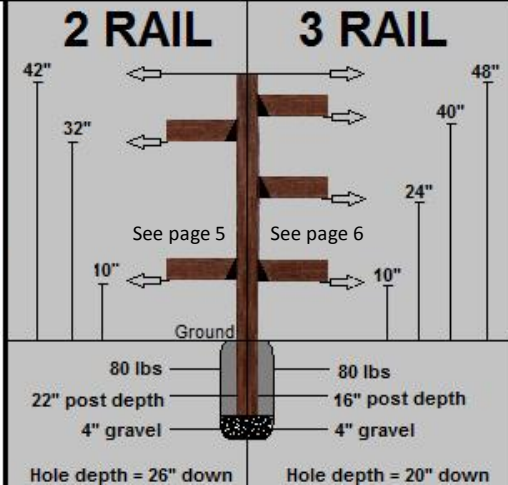
3 Set Post :
Set post + 80 lbs of Quikrete

4 Next Post : Set next post 67 1/2" inside posts

B CROSS RAILS



1 Attach Brackets :
Use chart to find rail heights. Measure up from ground, mark post for bracket bottom. Attach with provided screws. Secure rails into brackets with screws.



C GATES

1 Construct Z - BOX :

Construct a gate using the usual 2 or 3 rails + an additional 3 rails. Form rails into a squared box design, then add a diagonal rail to give the gate a strong Z - BOX figure.

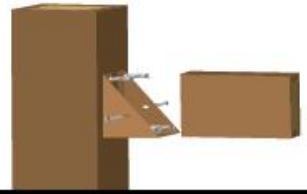


Use heavy duty gate hardware.

GOTHIC PICKET

BRACKET MOUNT

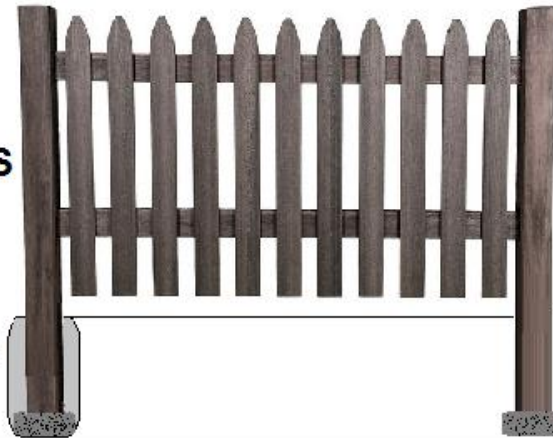
INSTALL INSTRUCTIONS BELOW
67 1/2" inside posts



B: CROSS RAILS

C: PICKETS / PANEL

A: MULTI-PURPOSE POSTS



For sloping: step brackets down

A POSTS



1 Dig Hole :
Dig hole 12" wide x 26" deep



2 Add Gravel :
Add 4" gravel (depth now = 22")



3 Set Post :
Set post + 80 lbs of Quikrete

4 Next Post : Set next post 67 1/2" inside posts

B RAILS / PANELS



1 Attach Brackets :
Panel: Use panel to mark post to find bracket location. Install post - panel - post - panel method.
Stick Built: Refer to B1 and chart on reverse of bracket install.

C PICKETS IF NECESSARY

1 Staple Pickets :
Shoot 3 staples per picket & rail intersection with 1 1/2" galvanized or stainless steel staples.

See page 7



D GATES

1 Construct Z - BOX :

Construct a gate using the usual 2 rails + an additional 3 rails. Form rails into a squared box design, then add a diagonal rail to give the gate a strong Z - BOX figure.

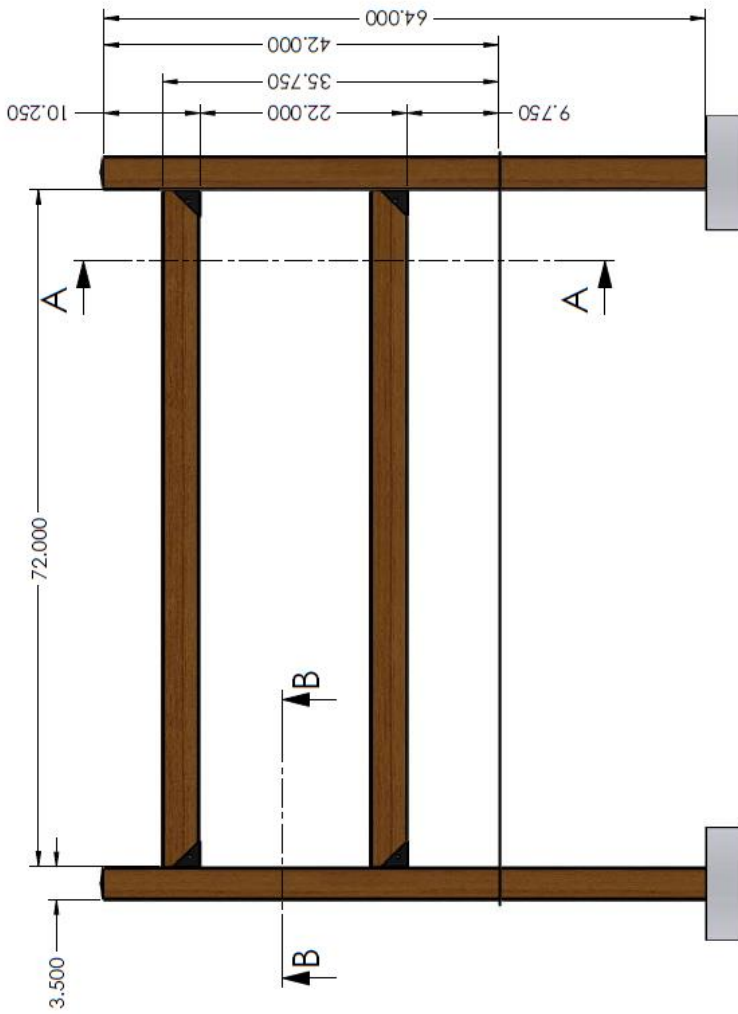


Use heavy duty gate hardware.

36" 2 Rail Fence Bracket Mount



SECTION B-B



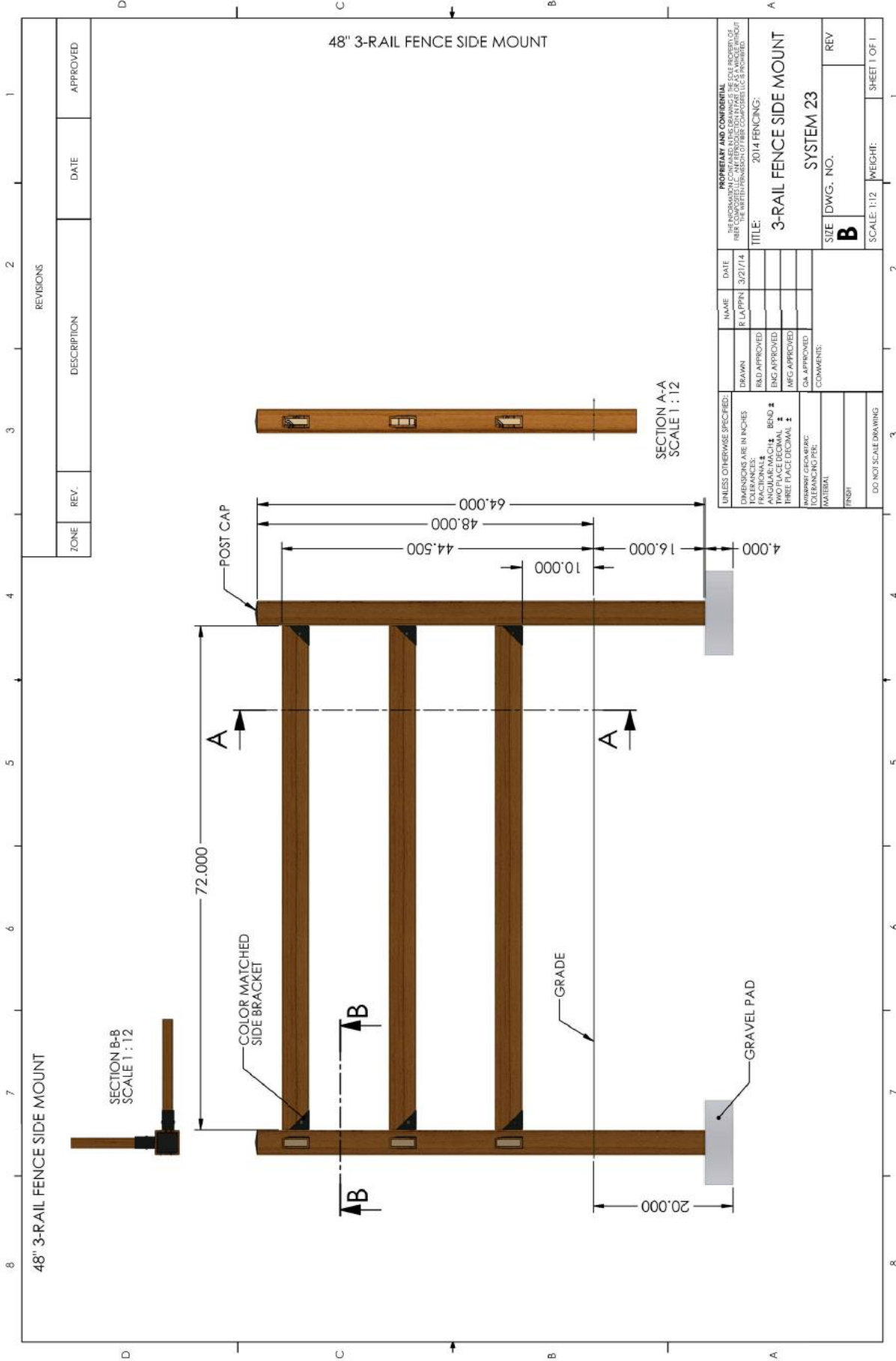
SECTION A-A

REVISIONS

ZONE	REV.	DESCRIPTION	DATE	APPROVED
	A	GRAPHIC CHANGES	3/21/2014	PL

UNLESS OTHERWISE SPECIFIED:		NAME	DATE	PROPERTY AND CONFIDENTIAL
DIMENSIONS ARE IN INCHES	DRAWN	R. LAPPIN	2/28/14	THE INFORMATION ON THIS DRAWING IS THE PROPERTY OF
FRACTIONAL 1/8	RED APPROVED			WEST COMPOSITE, LLC. ANY REPRODUCTION IN WHOLE OR IN PART WITHOUT
ANGULAR MATCH - BEND 2	ENG APPROVED			THE WRITTEN PERMISSION OF WEST COMPOSITE, LLC IS PROHIBITED.
MINIMUM RADIUS 1/8	ENG APPROVED			
THREE PLACE DECIMAL 1	MFG APPROVED			
INTERPRET GEOMETRIC	QA APPROVED			
TOLERANCING PER:	COMMENTS:			
MATERIAL				
FINISH				
DO NOT SCALE DRAWING				

TITLE:		2014 FBICING	
TITLE:		2-RAIL FENCE SIDE MOUNT	
TITLE:		(72" RAIL)	
TITLE:		SYSTEM 22	
SIZE	DWG. NO.	REV	A
B			
SCALE: Varies		SHEET 1 OF 1	



48" 3-RAIL FENCE SIDE MOUNT

SECTION B-B
SCALE 1 : 12

72.000

COLOR MATCHED
SIDE BRACKET

GRADE

GRAVEL PAD

POST CAP

44.500

48.000

64.000

10.000

16.000

4.000

SECTION A-A
SCALE 1 : 12

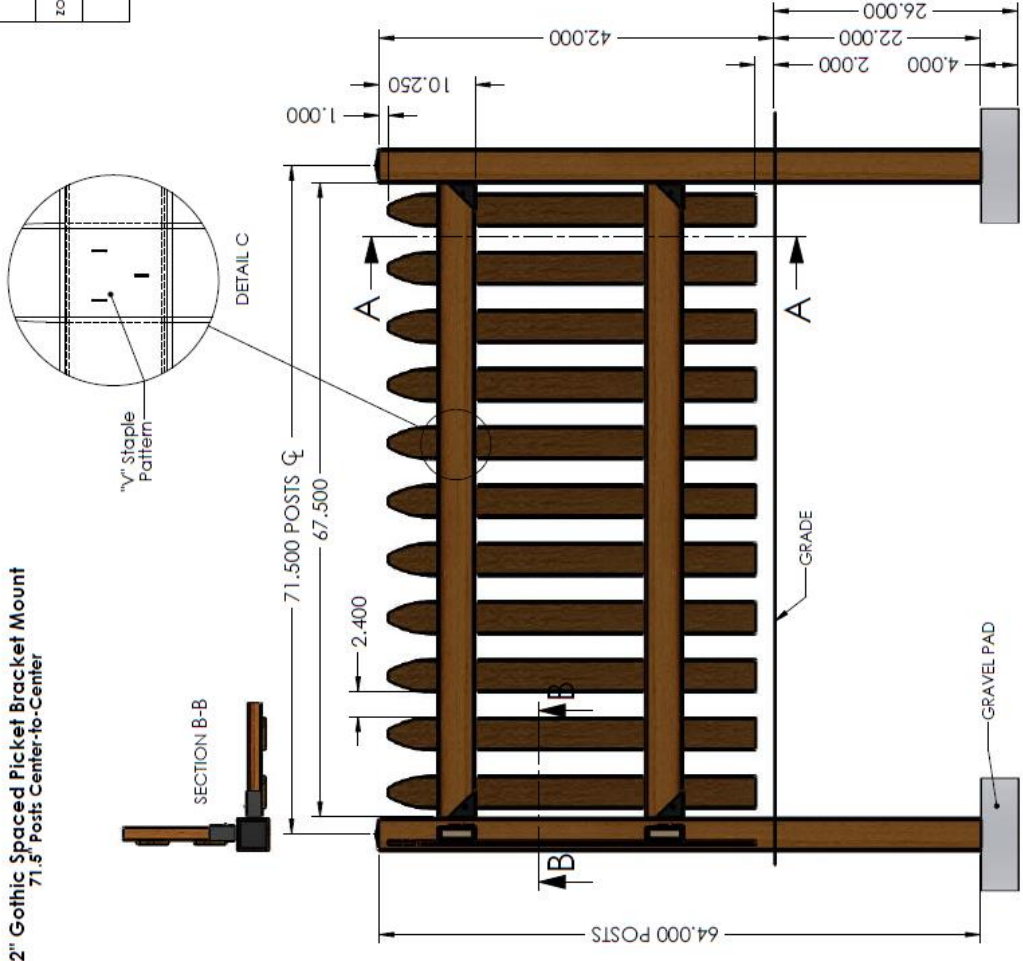
48" 3-RAIL FENCE SIDE MOUNT

REVISIONS			
ZONE	REV.	DESCRIPTION	DATE

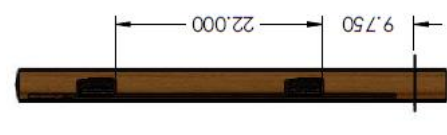
APPROVED

UNLESS OTHERWISE SPECIFIED:		NAME	DATE
DIMENSIONS ARE IN INCHES		R. LAPPIN	3/27/14
FRACTIONAL DIMENSIONS ARE TO BE SHOWN AS FRACTIONS		DRAWN	
ANGULAR DIMENSIONS ARE TO BE SHOWN AS ANGLES		CHKD. APPROVED	
HOLE DIMENSIONS ARE TO BE SHOWN AS HOLE DIMENSIONS		ENG. APPROVED	
HOLE DIMENSIONS ARE TO BE SHOWN AS HOLE DIMENSIONS		MFG. APPROVED	
HOLE DIMENSIONS ARE TO BE SHOWN AS HOLE DIMENSIONS		QA. APPROVED	
UNLESS OTHERWISE SPECIFIED:		COMMENTS:	
PROPRIETARY AND CONFIDENTIAL			
THIS DRAWING IS THE PROPERTY OF REEF CONCEPTS, LLC. IT IS NOT TO BE REPRODUCED OR TRANSMITTED IN ANY FORM OR BY ANY MEANS, WITHOUT THE WRITTEN PERMISSION OF REEF CONCEPTS, LLC.			
TITLE:		2014 FENCING:	
3-RAIL FENCE SIDE MOUNT			
SYSTEM 23			
SIZE DWG. NO. B			
SCALE: 1:12		WEIGHT:	
SHEET 1 OF 1			

42" Gothic Spaced Picket Bracket Mount
71.5" Posts Center-to-Center



42" Gothic Spaced Picket Bracket Mount
71.5" Posts Center-to-Center



SECTION A-A

REVISIONS				
ZONE	REV.	DESCRIPTION	DATE	APPROVED
	A	GRAPHIC CHANGES	3/26/2014	RL

UNLESS OTHERWISE SPECIFIED: DIMENSIONS ARE IN INCHES FRACTIONS: 1/4, 1/2, 3/4, 1, 1 1/2, 2 TWO PLACE DECIMAL THREE PLACE DECIMAL NEAREST QUARTER TOLERANCING PER: MATERIAL FINISH		NAME	DATE
DRAWN	CHECKED		
ENG. APPR.	MFG. APPR.		
COMMENTS:		PROPERTY AND GENERAL THE INFORMATION CONTAINED IN THIS DRAWING IS THE SOLE PROPERTY OF THE DRAWING CONTRACTOR. IT IS TO BE USED ONLY FOR THE PROJECT AND SITE INDICATED. TITLE: 2014 FENCE: Gothic Spaced Picket Face Mount SYSTEM 18	
SIZE	DWG. NO.	REV	
B		A	
SCALE: 1:20		WEIGHT:	
SHEET 1 OF 1			

NOTE: BRACKET MOUNT INSTALL FOR PRE-BUILT SECTIONS
OR INDIVIDUAL COMPONENTS.