

**waterpik**

**EasySelect® Showerhead**

**Pomme de douche Waterpik® EasySelect®**

**Cabezal de ducha Waterpik® EasySelect®**

**Instruction Manual**

**Manuel d'instructions**

**Manual de instrucciones**

FN 20011364-F AG

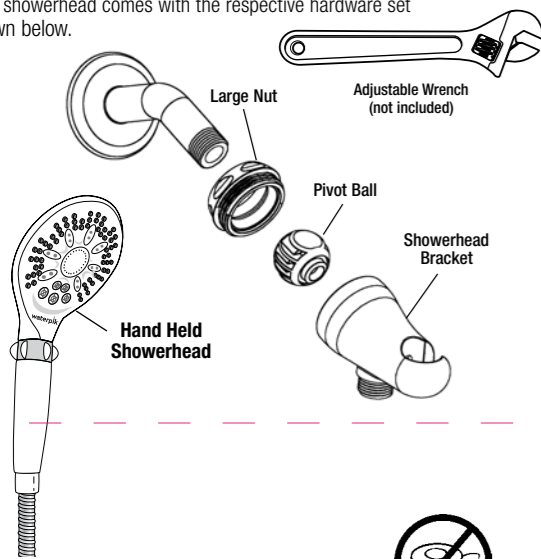
**Note:** Drawings may not match your product. **Remarque:** Les illustrations peuvent ne pas correspondre à votre produit. **Nota:** Es posible que los dibujos no coincidan con su producto.

**ENGLISH**

Thank you for purchasing this **Waterpik® EasySelect® brand Showerhead**, and welcome to a new level of showering enjoyment! Since we invented the massaging showerhead in 1974, we've been constantly working to improve the showering experience for our customer. Our latest generation shower technology delivers both pure relaxation and rejuvenation with the selection at your finger tips.

**COMPONENTS (Side Entry Bracket, some models)**

Your showerhead comes with the respective hardware set shown below.



**INSTALLATION (Side Entry Bracket)**

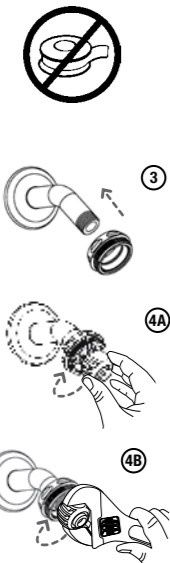
1. Remove old showerhead.
2. Remove large nut from EasySelect® bracket and remove pivot ball.

**NOTE:** This nut and bracket have a left handed thread. The large nut tightens when turned clockwise as viewed from the front of the bracket.

3. Place large nut over shower pipe (narrow end toward wall),(3)

4. Thread pivot ball onto shower pipe and hand tighten clockwise to a snug fit. (4A) Use an adjustable wrench or pliers to tighten an additional ¼ turn. (4B)

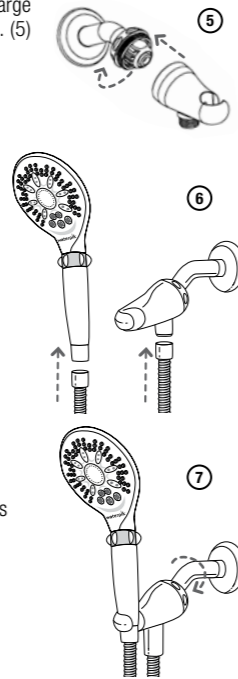
**IMPORTANT:** Do not over tighten.



5. Attach bracket by hand tightening the large nut to the threaded back of the bracket. (5)

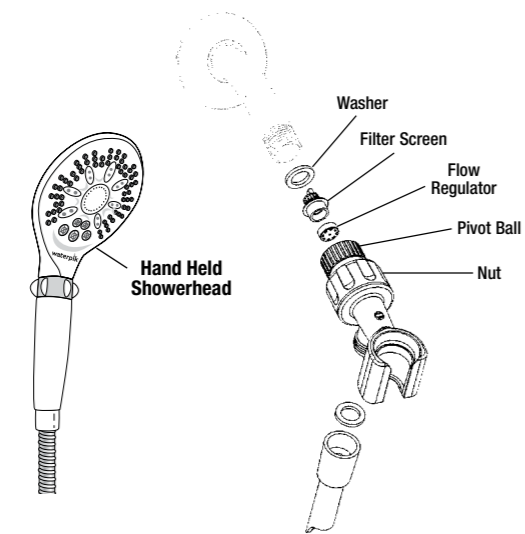
6. **Hose Attachment:** Hand tighten hose end to bracket and handle. Do not use pliers, wrench, or pipe tape to connect hose ends to showerhead or bracket.

7. If showerhead or bracket becomes loose during use, re-tighten large nut as described above.



**COMPONENTS (Front Entry Bracket, some models)**

Your showerhead comes with the respective hardware set shown below.

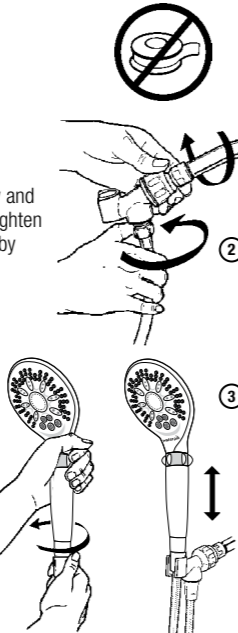


**INSTALLATION (Front Entry Bracket)**

1. Remove old showerhead.

2. Slightly loosen nut on bracket assembly and position hose connection downward. Tighten pivot ball to pipe. Ensure nut is secure by hand tightening. (2)

3. Hand tighten hose end to bracket and handle. Do not use pliers or wrench to connect hose ends to showerhead or bracket. (3)



**OPERATION**

Turn spray selector on handle in either direction to control spray pattern.



Waterpik® brand showerheads are equipped with an OptiFLOW® regulator that limits maximum water flow to 2.5 gallons per minute at 80 psi as mandated by U.S. federal law.

The flow regulator may be removed for cleaning debris to improve water flow in the showerhead. To remove, unscrew filter screen from pivot ball by turning counterclockwise. Remove regulator with needle-nose pliers and replace filter screen.

**Troubleshooting Guide**

Problem	Solution
No water flow from installed shower head:	a Confirm previous shower washer is not in the j-pipe. b Confirm the hose is properly installed, try switching ends. c Confirm there is only one washer in the pivot ball.
Low water pressure or missing spray patterns	a Clean shower head in vinegar/water solution. (See care section). b Clean screen and flow regulator.
Leaking at pipe pivot ball connection:	a Confirm one single washer is seated on top of the screen. b Grate bar of soap across the j-pipe threads to act as a sealant.
Showerhead and/or bracket stiff to change angle	a Immerse pivot ball and large nut of the bracket in hot water or use a blow dryer for several minutes and then use a towel to loosen the large nut.

**CARE AND CLEANING**

- Clean filter screen at least once a year or whenever you notice a drop in water pressure. To clean, remove bracket from large nut. Remove the pivot ball from the shower pipe and gently brush the filter screen, located in the pivot ball. You can also back flush the filter screen by holding the pivot ball under a running faucet with the small end (non-threaded) up in the water stream. To replace showerhead, follow steps 2-4 of installation.
- To clean mineral deposits, gently rub the rubber nozzles on the face of the showerhead to dislodge. For deeper cleaning, remove showerhead and place in 1-1½ cups of white vinegar for 2-3 hours. Reattach showerhead and run in all modes for 1-2 minutes to clean out vinegar.

**Vacuum Breaker (some models)**

Vacuum breakers are required on hand-held showers in the State of Wisconsin and the City and County of Los Angeles, California, by plumbing code in order to protect water supplies from potential back-flow.

The vacuum breaker (located within the bracket or hose) may discharge a small amount of water when you turn on your shower. It will also drain a small amount of water when you turn off your shower. Both are normal operative conditions.

**LIMITED LIFETIME WARRANTY**

Water Pik, Inc. warrants to the original purchaser of this product that it is free from defects in material and workmanship for as long as the original purchaser owns this product. Water Pik, Inc. will replace any part of the product which in our opinion is defective, provided that the product has not been abused, misused, altered or damaged after purchase. (This includes damage due to use of tools or harsh chemicals.) In the event an item has been discontinued we will replace with what we deem to be the closest product. Water Pik, Inc. is not responsible for labor charges, installation, or other consequential cost. The responsibility of Water Pik, Inc. shall not exceed the original purchase price of the product. This warranty gives you specific legal rights. You may also have other rights that vary where you reside. Save your receipt as proof of purchase is required for warranty action.

**Have any questions or need assistance?**

In the U.S., call our toll-free Customer Assistance Line, **1-800-525-2774**.

If in Canada call our toll-free Customer Assistance Line, **1-888-226-3042**

Outside the U.S., write us at:  
Water Pik, Inc.  
1730 East Prospect Road  
Fort Collins, CO 80553-0001 USA

**www.waterpik.com**

If product malfunctions or becomes damaged, stop use and contact Water Pik, Inc. for replacement.

Waterpik® (stylized) is a trademark of Water Pik, Inc. registered in the EU, Switzerland, Mexico, Canada, and United States.

Waterpik® is a trademark of Water Pik, Inc. registered in Argentina, Australia, Austria, Canada, China, Czech Republic, Hungary, India, Japan, Poland, Russian Federation, South Africa, Switzerland, Ukraine, and the United States.

OptiFlow® is a trademark of Water Pik, Inc. registered in Australia, Canada, the EU, Hong Kong, Korea and the United States.

Medallion® is a trademark of Water Pik, Inc., registered in Australia, the EU, and the United States.

EasySelect® is a trademark of Water Pik, Inc. registered in Australia, the EU, Mexico and the United States.

Treat yourself better™ is a trademark of Water Pik, Inc.

© 2010 Water Pik, Inc.

Printed in China.

**waterpik**

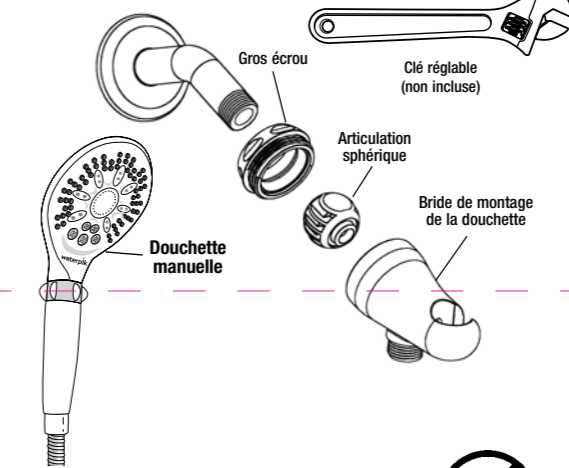
Water Pik, Inc.  
1730 East Prospect Road  
Fort Collins, CO 80553-0001 U.S.A.  
**www.waterpik.com**

**FRANÇAIS**

Nous vous remercions pour votre acquisition de cette pomme de douche **Waterpik® de marque EasySelect®**, celle-ci vous fera connaître un nouveau niveau de plaisir et confort sous la douche! Depuis que nous avons inventé la douche d'hydro-massage en 1974, nous avons constamment amélioré l'expérience de la douche pour nos clients. Notre toute dernière technologie de douche nouvelle génération vous offre à portée de main un moment de pure détente et revigorant à la fois.

**COMPOSANTS (Support pour insertion latérale; certains modèles)**

La pomme de douche est fournie avec les accessoires appropriés pour l'une des configurations de montage ci-dessous.



**INSTALLATION (Support pour insertion latérale)**

1. Démontez l'ancienne pomme de douche.

2. Retirer le gros écrou de la bride de pomme de douche EasySelect® et ôter la rotule de pivot.

**REMARQUE :** Cet écrou et ce support sont filetés sur la gauche. Le gros écrou est serré lorsqu'on le fait pivoter dans le sens horaire en se plaçant face au support. Veiller à bien serrer.

3. Placer le gros écrou sur le tuyau de raccordement de la pomme de douche (extrémité étroite vers le mur). (3)

4. Enfiler le raccord articulé sur le tuyau de douche et serrer fermement à la main dans le sens horaire pour bien l'ajuster. (4A) Serrer d'un quart de tour supplémentaire à l'aide d'une clé à molette ou pinces. (4B)

**IMPORTANT :** Ne pas trop serrer.

5. Fixer la pomme de douche à la main en serrant le gros écrou sur l'adaptateur fileté situé à l'arrière du support. (5)

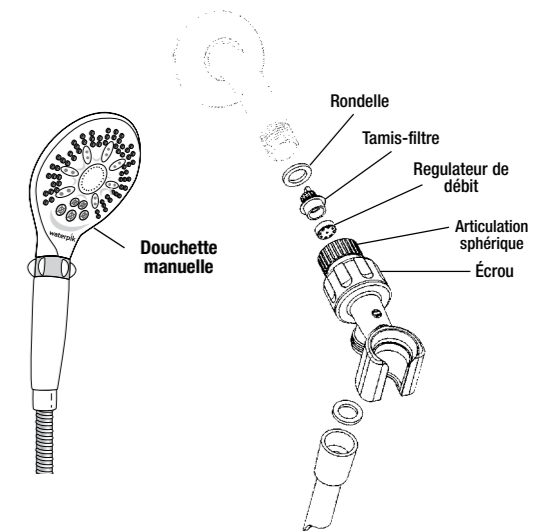
6. Fixer manuellement l'extrémité du tuyau sur le support et la poignée. Ne pas utiliser de pinces, de clé ou de ruban pour tuyauterie pour raccorder les extrémités du tuyau à la pomme de douche ou au support.

7. Positionner la pomme de douche à la position désirée. Pour immobiliser la pomme de douche, serrer le gros écrou (rotation dans le sens horaire, comme pour l'articulation sphérique).



**COMPOSANTS (Support pour insertion frontale; certains modèles)**

La pomme de douche est fournie avec les accessoires appropriés pour l'une des configurations de montage ci-dessous.

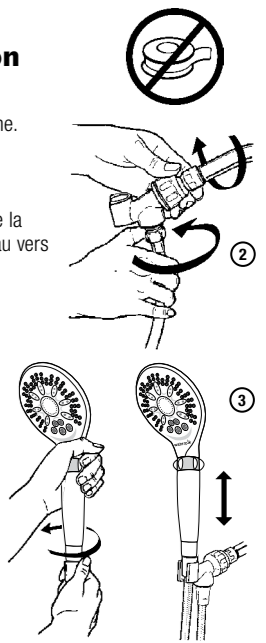


**INSTALLATION (Support pour insertion frontale)**

1. Démontez l'ancienne pomme de douche.

2. Pour les modèles à main, desserrer légèrement la vis sur l'ensemble de la bride et positionner le raccord de tuyau vers le bas. (2)

3. Serrer la boule d'articulation sur le tuyau. S'assurer que la base de la vis est bien fixée en la serrant manuellement. (3)



**UTILISATION**

Orienter le sélecteur d'aspersion situé sur la poignée d'un côté ou de l'autre pour choisir le type d'aspersion désiré.

Les pommes de douche de la marque Waterpik® sont pourvues d'un régulateur OptiFLOW® qui limite le débit maximal à 2,5 gallons par minute à une pression de 80 lb/po², en vertu de la loi fédérale aux É.-U.

Le régulateur de débit peut être retiré pour permettre le nettoyage des résidus afin d'améliorer le débit dans la pomme de douche. Pour retirer le régulateur, séparer le tamis du filtre du pivot à rotule en le dévissant dans le sens inverse des aiguilles d'une montre. Ôter le régulateur à l'aide de pinces à bec effilé et remettre en place l'écran du filtre.

EN FRANÇAIS AU VERSO

DATE: 30 June 2010		CLIENT: Water Pik, Inc.	
FILENAME: FN20011364-FAG_LAR-LAOInst.indd	DESCRIPTION: EasySelect LAR/LAO Showerhead Instruction Manual		
FILE TYPE: Adobe InDesign CS4	PREPARED BY: Brian Colon	FORM: 20011364-F AG	
SIZE FLAT: 20.4" x 11.25"	SIZE FOLDED: 3.4" x 3.8125"	FOLDS: Indicated	
DIELINE: N/A	INK: Black		
NOTES: No embedded color profile.			

