

MTB02

Installation and User Manual

by Monster Mounts

+1 (310)-645-6400
www.monstermounts.com

Monster Mounts/Promounts
20218 Hamilton Ave,
Torrance CA 90502

Warnings

- Do not use rough textured cleaning tools or highly corrosive cleaners when cleaning your LED Lights. These tools and chemicals will damage the product. ONLY use a soft damp cloth and non corrosive cleaners.
- Do not scratch the LED strips or use sharp objects on them.
- Do not permanently bend, twist, or screw through the LED strips as this will damage the LED's internal components.
- Do Not pull or snap with excessive force, this will damage the product.
- If the product is damaged or wires are frayed or damaged, do not use the product. If your product arrived in this condition, contact us for a replacement.
- Recommended temperature is between 10°F to 120°F. Do not use in extreme heat or cold.
- Once the product has come to the end of its life please recycle the components. Ask your local retailer for proper disposal methods.

Packaging Contains

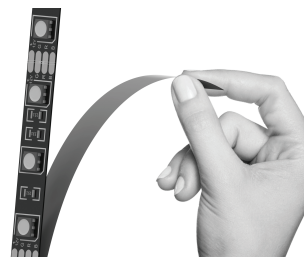
- 1 Piece 50cm USB cable
- 1 piece IR receiver with signal cord 50cm, 2 connect cord 10cm & 125cm
- 1 piece 24 key remote controller
- 2 piece 50cm strip light, 30 LED/piece, 5v, IP65 waterproof 5050 RGB LED strips

- 1 -

Installation Steps



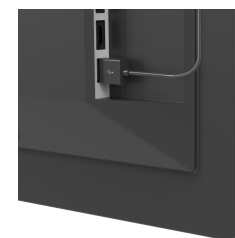
1. Clean the surface of residue and dust



2. Remove the protective film covering the adhesive backing on your LED Strips



3. Place the LED strips in the location you desire, pressing firmly and sliding your finger along the strip to ensure a secure attachment.



4. Connect the USB plug to any USB port, such as the one located on the back of your TV or outlet. If no USB power port is available, a USB to outlet adapter can be used. *USB to OUTLET Adapter Not Included

- 3 -



5. Use the included IR Remote Control to choose your favorite color and settings. *IR Remote Control must be pointed at the IR Receiver to work and change color settings on your lights. (IR Receiver located near the lights USB connector).



6. Enjoy your new LEDs!

- 4 -

LED Strip Specification

- LED Type: SMD 5050
- PCB Color: Black
- LED Color: RGB
- LED Quantity: 30 LEDs per 50cm Strip
- Voltage: DC 5V
- Waterproof Class: IP65 Waterproof
- Self-adhesive Back with Double-sided Adhesive Tape
- LED Strip: 2 Piece 50cm Length

Controller Specifications

- Working Temperature: 10°F - 120°F
- Voltage Supply: DC5V
- Output: 3 Channels
- Connecting Mode: Common Anode
- External Dimension: L 49.5 mm x W 34.5mm x H 22mm
- Net Weight: 50g
- Function Model: 20 Models
- Static Power Consumption: <1 W
- Output Current <2 A
- Output Power: 5 V <30W
- Connecting: 2 pieces 5V 5050 RGB LED Strips
- Cable Length:
 - USB/DC Cable Length: 50cm
 - IR Receiver with signal cord, 2 Connection Cord: 10cm and 125cm

- 5 -

Remote Breakdown



Key

ON/OFF
Speed/Brightness

Static Color Options

Flash

Strobe

Fade

Smooth

Function

Turns the LED Lights On or OF

Increase or Decrease the Brightness of the LEDs when on a static color

Increase or Decrease the changing Speed of the LEDs when in a dynamic theme mode

16 color keys each corresponding to a single static color. Select a color by pressing its colored button.

Dynamic Theme mode that jumps between three colors: red, green, and blue.

Dynamic Theme mode that creates a strobe-light effect

Dynamic Theme mode that fades between 7 colors

Dynamic theme mode that flashes between 7 colors

- 6 -