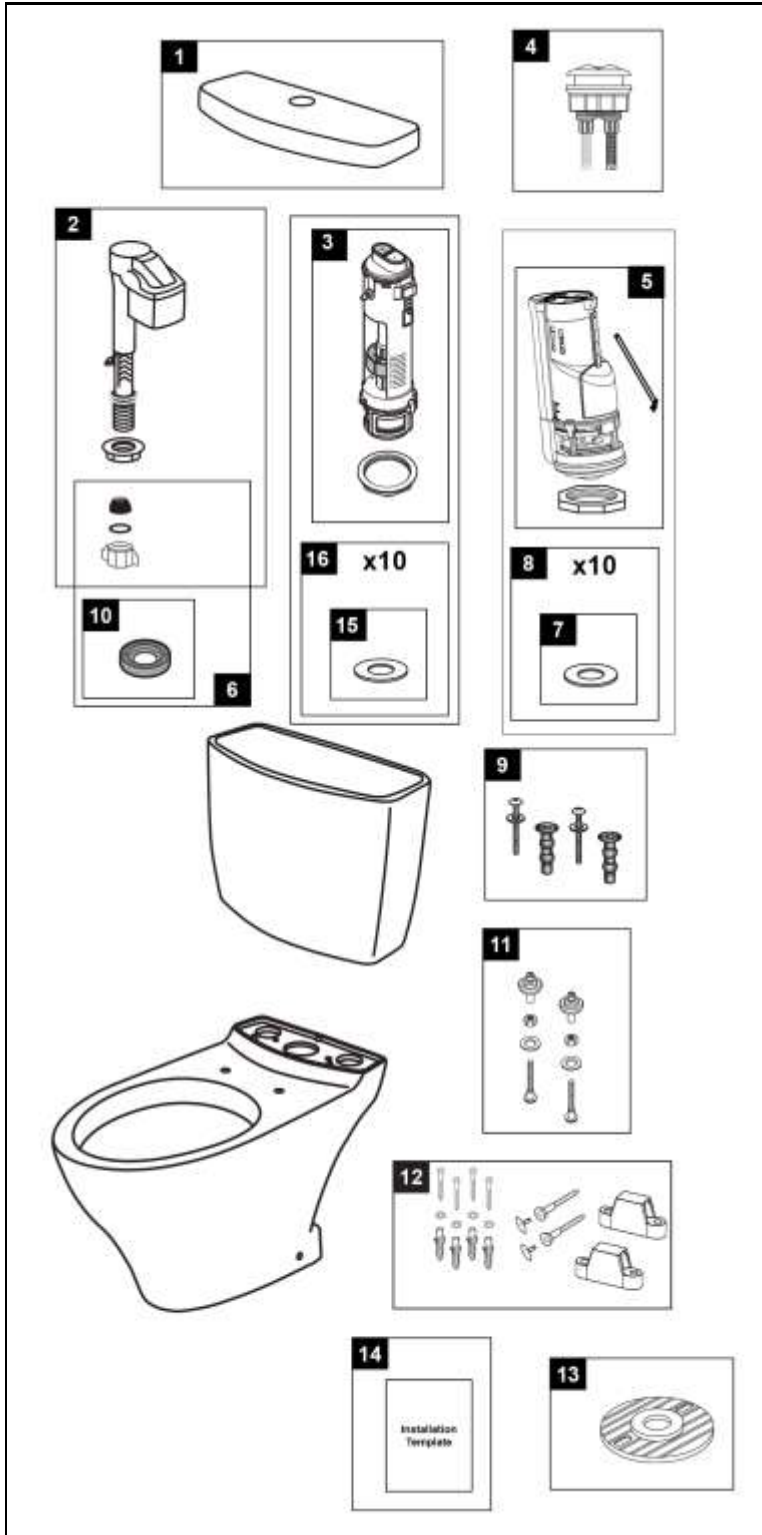


CST412MF & CST412MF.10

CST412MF
CT412F
ST412M

CST412MF.10
CT412F.10
ST412M

Aquia® 1.6 & 0.9 Gpf Toilet, Elongated, Dual-Max®, 12" & 10" Rough In Universal Height



Item	Part	Description
1	TCU412CR#01	Tank Lid w/ Velcro Tape - Cotton White
	TCU412CR#03	Tank Lid w/ Velcro Tape - Bone
	TCU412CR#11	Tank Lid w/ Velcro Tape - Colonial White
	TCU412CR#12	Tank Lid w/ Velcro Tape - Sedona Beige
	TCU412CR#51	Tank Lid w/ Velcro Tape - Ebony
2	TSU99A.X	Fill Valve
3	THU224	Flush Valve
4	THU314#01	Push Button Assembly - Cotton
	THU314#CP	Push Button Assembly - Chrome Plated
	THU314#BN	Push Button Assembly - Brushed Nickel
	THU314#PN	Push Button Assembly - Polished Nickel
5	THU435	Flush Valve
6	THU238	Parts Bag Assembly
7	9BU088E	Flush Valve Gasket (1 piece)
8	THU348	Flush Valve Gasket (10 pieces)
9	THU651N	Top Mounting Seat Hardware
10	9BU062E	Tank to Bowl Gasket
11	TS810DV2	Tank Top Mounting Kit
12	THU427#01	Toilet Mounting Hardware (for #01 & #11)
	THU427#03	Toilet Mounting Hardware
	THU427#12	Toilet Mounting Hardware
	THU427#51	Toilet Mounting Hardware
13	THU291	Socket Rough-In
14	0GU147-1	Installation Template
15	9BU102E	Flush Valve Gasket (1 piece)
16	THU227	Flush Valve Gasket (10 pieces)

Note:

Items 15 and 16 are used with THU224 Flush Valve as shown.
Items 7 and 8 are used with THU435 Flush Valve as shown.

Product Number Explanations

Two-Piece Toilet

(CST) Gravity Type Toilet
(412) Model
(M) Dual-Max®
(F) Universal Height
(.10) 10" Rough-In

Tank

(ST) Tank
(412) Model
(M) Dual-Max®

Bowl

(CT) Bowl
(412) Model
(F) Universal Height
(.10) 10" Rough-In

Actual Product may vary slightly from illustration.