



# Sno-Tek

## Parts Manual

*Models:*

920402  
920313  
920314  
920315



## THE MANUAL

---

Before you operate your unit, carefully and completely read manuals supplied with the unit. The contents will provide you with an understanding of safety instructions and controls during normal operation and maintenance.

For your safety and the safety of others always read, understand, and follow all DANGER, WARNING, and CAUTION messages found in manuals and on safety decals.

Hardware descriptions are given in decimals.

Decimals to Fractions			
.063	1/16	.563	9/16
.125	1/8	.625	5/8
.188	3/16	.688	11/16
.250	1/4	.750	3/4
.313	5/16	.813	13/16
.375	3/8	.875	7/8
.438	7/16	.938	15/16
.500	1/2	1.00	1

## SERVICE AND REPLACEMENT PARTS

---

When ordering replacement parts or making service inquiries, know the Model and Serial numbers of your unit and engine.

Numbers are located on the product registration card in the unit literature package. They are printed on a serial number label, located on the frame of your unit.

- Record Unit Model and Serial numbers here:

- Record Engine Model and Serial numbers here:

## UNAUTHORIZED REPLACEMENT PARTS

Use only Sno-Tek replacement parts. The replacement of any part on this vehicle with anything other than an Sno-Tek authorized replacement part may adversely affect the performance, durability, or safety of this unit and may void the warranty. Ariens disclaims liability for any claims or damages, whether warranty, property damage, personal injury or death arising out of the use of unauthorized replacement parts.

## PRODUCT REGISTRATION

---

The Sno-Tek dealer must register the product at the time of purchase. Registering the product will help the company process warranty claims or contact you with the latest service information. All claims meeting requirements during the limited warranty period will be honored, whether or not the product registration card is returned. Keep a proof of purchase if you do not register your unit.

**Customer Note:** If Dealer does not register your product, please fill out, sign and return the product registration card to Ariens or go to [www.ariens.com](http://www.ariens.com).

## YOUR SATISFACTION IS IMPORTANT

---

Questions? Please follow these helpful steps:

1. Refer to the manuals supplied with your unit.

They will guide you through safe and proper operation and maintenance.

They contain specifications on your unit.

If your questions are not answered in these manuals, go to step number two.

2. Contact Your Dealer.

Our dealers will be happy to supply any service or advice required to keep your unit operating at peak efficiency.

A factory trained staff is available to support your equipment needs. They stock genuine Ariens parts and lubricants manufactured with the same precision and skill as the original.

If your questions are not resolved by the support staff, ask for the manager or owner.

When contacting your Dealer supply your model and serial numbers.

## TO SPEED PARTS ORDERING:

1. Know the model and serial numbers of your unit.
2. Know the part number required.
3. Know the quantity required.
4. Know the part description.

## MODELS

---

### **Model 920402 (Sno-Tek 24E)**

Serial No. 250000+

### **Model 920313 (Sno-Tek 24E 240V CE)**

Serial No. 250000+

### **Model 920314 (Sno-Tek 28E 240V CE)**

Serial No. 250000+

### **Model 920315 (Sno-Tek 22E 240V CE)**

Serial No. 250000+

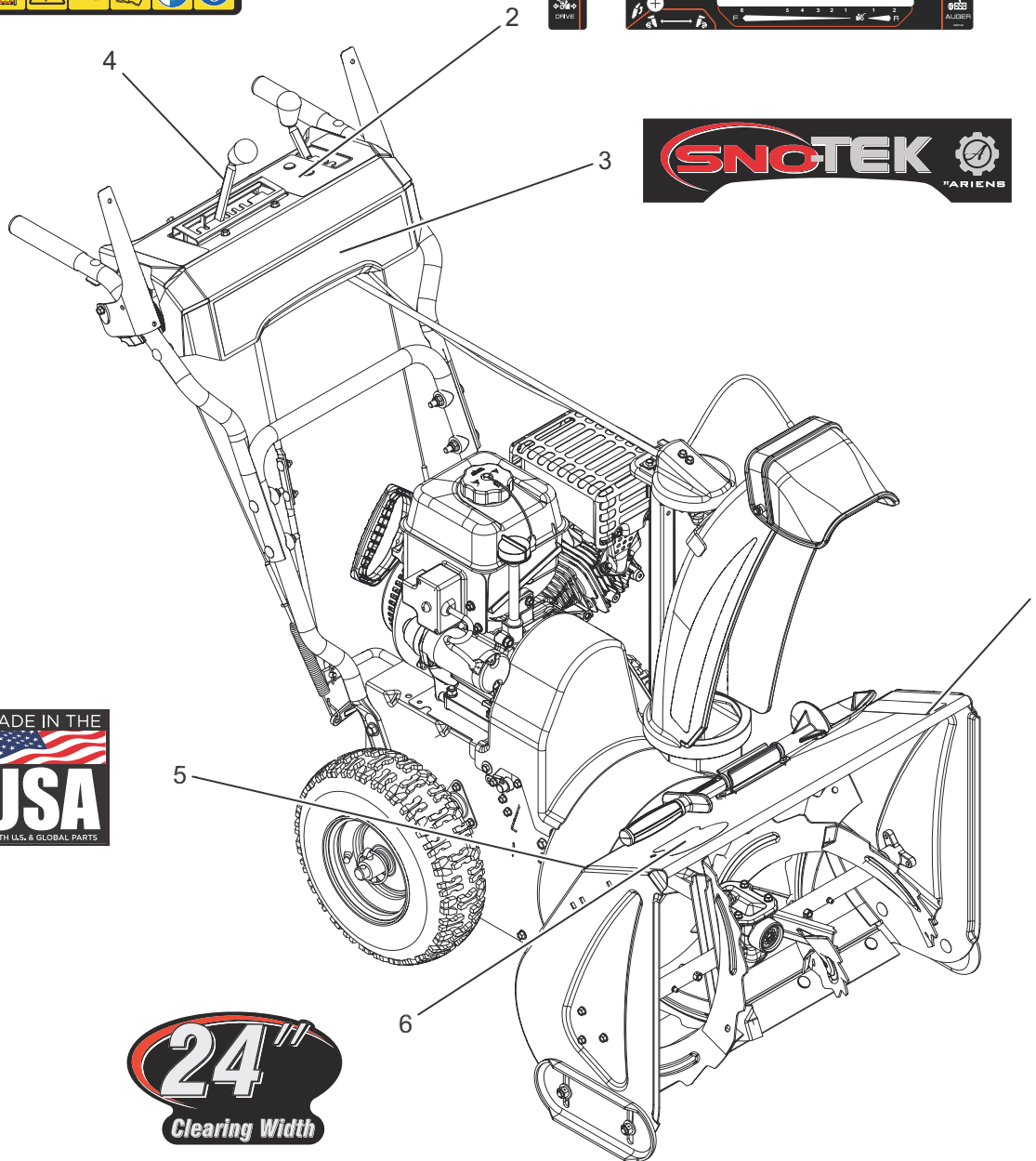
## TABLE OF CONTENTS

---

Decals – 24" .....	4
Decals – 24" .....	5
Decals – 28" .....	6
Decals – 22" .....	7
Engine and Frame – 24" .....	8
Engine and Frame – 24" & 28" .....	9
Engine and Frame – 22" .....	10
Idler and Brake .....	11
Friction Drive .....	12
Wheels and Axle – 22" & 24" .....	13
Wheels and Axle – 28" .....	14
Gear Case – 24" .....	15
Gear Case – 28" .....	16
Gear Case – 22" .....	17
Control Panel .....	18
Control Panel .....	19
Controls .....	20
Controls .....	21
Handlebars .....	22
Discharge Chute .....	23
Discharge Chute .....	24
Chute Rotation .....	25
Housing – 24" .....	26
Housing – 28" .....	27
Housing – 22" .....	28
Auger – 24" .....	29
Auger – 28" .....	30
Auger – 22" .....	31

# DECALS – 24"

Model 920402

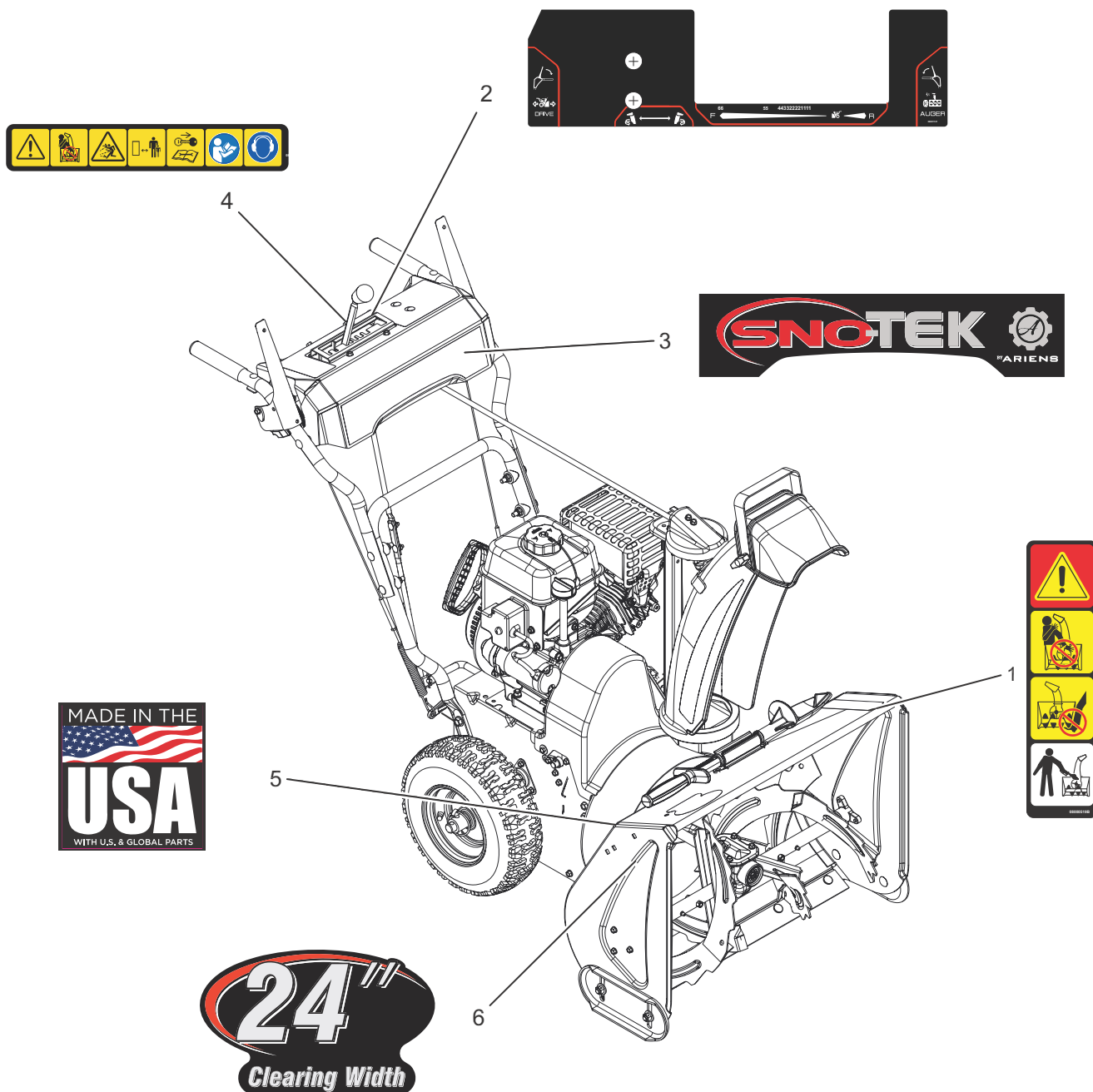


BOM ID	Number	Qty	Description
1	08000519	1	DECAL, DANGER -ROTATING PARTS
2	08001120	1	DECAL, CONTROL -SML, AT, ID
3	08001015	1	DECAL, DASH - SNO-TEK
4	08000945	1	DECAL, SAFETY DASH
5	08001038	1	DECAL, MADE IN USA
6	08000806	1	DECAL, HOUSING - SNO-TEK 24



# DECALS – 24"

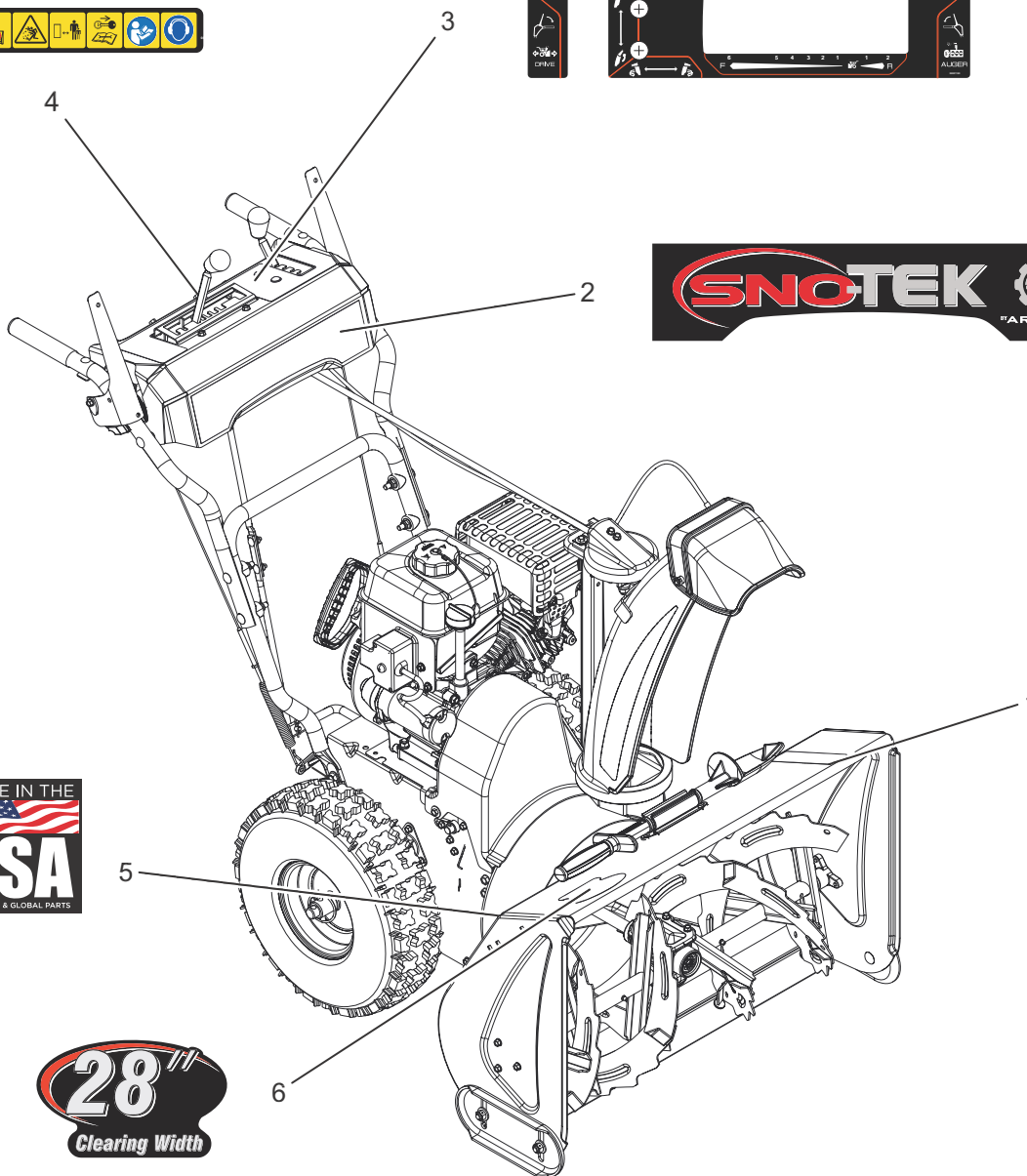
Model 920313



BOM ID	Number	Qty	Description
1	08000519	1	DECAL, DANGER -ROTATING PARTS
2	08001121	1	DECAL, CONTROL -SML, AT, ID
3	08001015	1	DECAL, DASH - SNO-TEK
4	08000945	1	DECAL, SAFETY DASH
5	08001038	1	DECAL, MADE IN USA
6	08000806	1	DECAL, HOUSING - SNO-TEK 24

# DECALS – 28"

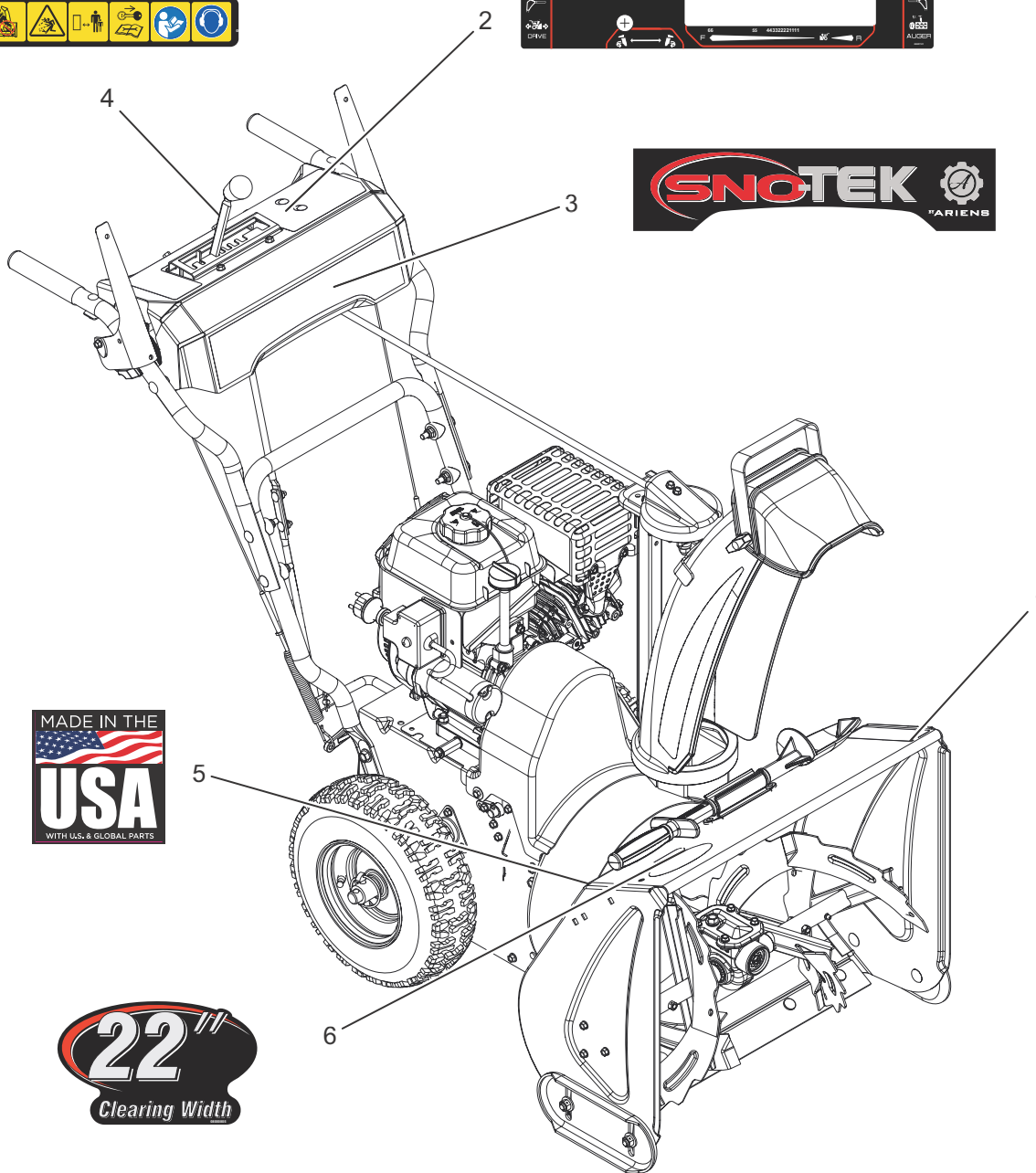
Model 920314



BOM ID	Number	Qty	Description
1	08000519	1	DECAL, DANGER -ROTATING PARTS
2	08001015	1	DECAL, DASH - SNO-TEK
3	08001120	1	DECAL, CONTROL -SML, AT, ID
4	08000945	1	DECAL, SAFETY DASH
5	08001038	1	DECAL, MADE IN USA
6	08000807	1	DECAL, HOUSING - SNO-TEK 28

# DECALS – 22"

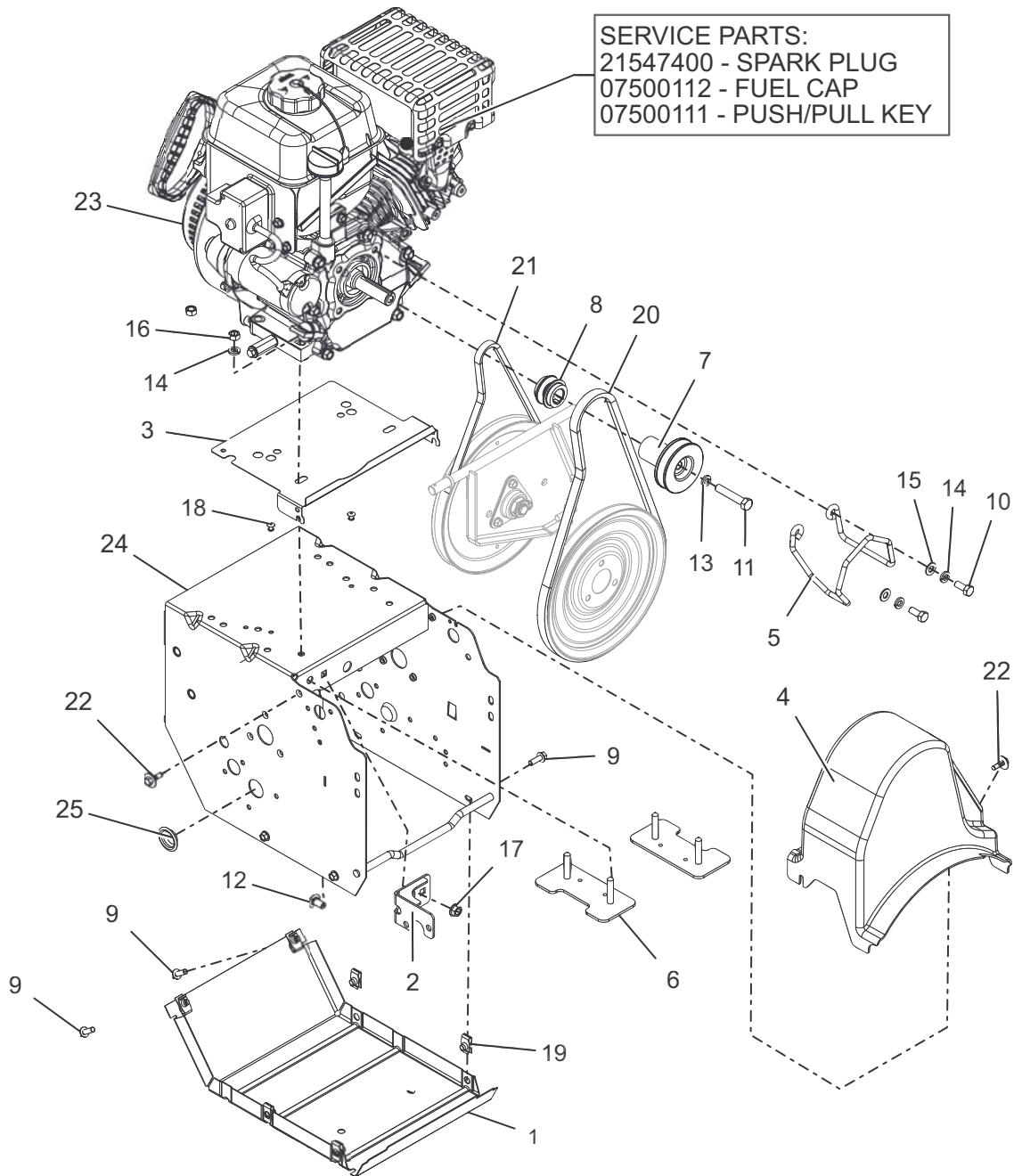
Model 920315



BOM ID	Number	Qty	Description
1	08000519	1	DECAL, DANGER -ROTATING PARTS
2	08001121	1	DECAL, CONTROL -SML, AT, ID
3	08001015	1	DECAL, DASH - SNO-TEK
4	08000945	1	DECAL, SAFETY DASH
5	08001038	1	DECAL, MADE IN USA
6	08000805	1	DECAL, HOUSING - SNO-TEK 22

# ENGINE AND FRAME – 24"

Model 920402

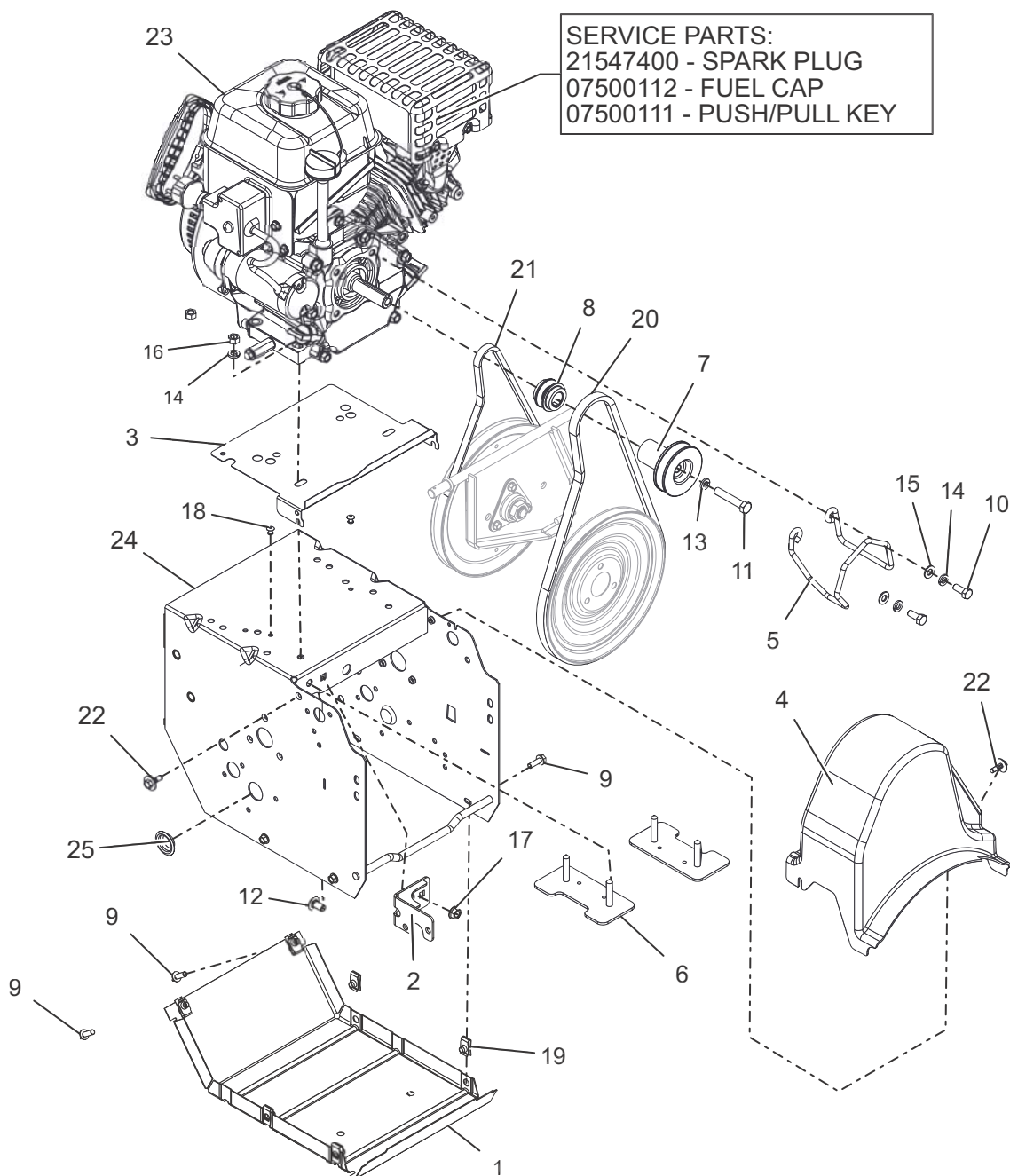


BOM ID	Number	Qty	Description
1	00492351	1	COVER, BOTTOM
2	00657051	1	WLDMT, FRAME BRKT
3	04895151	1	BAFFLE, COMPACT (BLACK)
4	03881000	1	COVER, COMPACT BELT
5	04561800	1	FINGER, BELT
6	04334100	2	STRAP, ENGINE BOLT-WLDMT
7	04827100	1	SHEAVE, AUGER 3/4" PM
8	09735700	2	TRACTION, SHEAVE HALF
9	05900019	6	BLT-HEX .25-20X.75 HWH YWZC GR5
10	05947300	2	BLT-HEX .31-24X.75 GR5 YWZC
11	05958600	1	BLT-HEX .38-24X2.00 YWZC GR5
12	06212200	1	BLT-RHDSSQNK .31-18X.62 G5YZ
13	06307400	1	WSHR-LK .31X.097 HVY YWZC

BOM ID	Number	Qty	Description
14	06307400	4	WSHR-LK .31X.097 HVY YWZC
15	06437200	2	WSHR-FL-STL.344X.688X.065YWZC
16	06529200	4	NUT-HEX .31-18 YWZC
17	06543100	1	NUT, LK-TOP-FLG .312-18 YWZC
18	06800028	2	RVT-POP .187x.250 (#64) YWZC
19	07009000	6	NUT, RTNR .25-20 X .56
20	07200725	1	V-BELT, HA - RAW EDGE LAMINATED
21	07200603	1	V-BELT, 3L-WRAPPED CLUTCHING
22	07400108	2	SCR, TAP .25-20 X.5 CAPTIVE
23	08201213	1	ENGINE,
24	04885351	1	FRAME, MAIN - WELDMENT (BLACK)
25	07500102	2	PLUG, HOLE - 1.00"

# ENGINE AND FRAME – 24" & 28"

Models 920313, 314



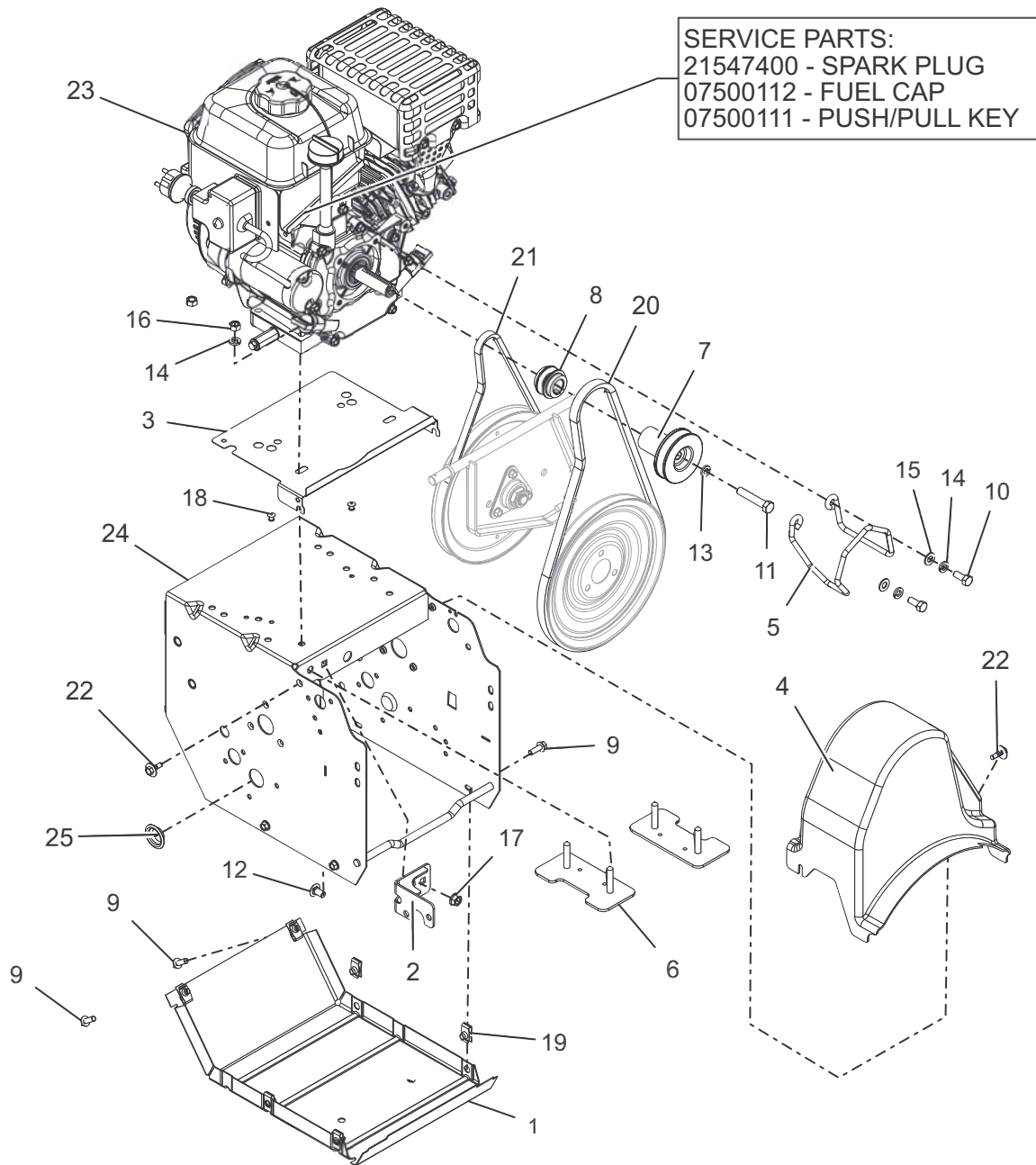
BOM ID	Number	Qty	Description
1	00492351	1	COVER, BOTTOM
2	00657051	1	WLDMT, FRAME BRKT
3	04895151	1	BAFFLE, COMPACT (BLACK)
4	03881000	1	COVER, COMPACT BELT
5	04561800	1	FINGER, BELT
6	04334100	2	STRAP, ENGINE BOLT-WLDMT
7	04827100	1	SHEAVE, AUGER 3/4" PM
8	09735700	2	TRACTION, SHEAVE HALF
9	05900019	6	BLT-HEX .25-20X.75 HWH YWZC GR5
10	05947300	2	BLT-HEX .31-24X.75 GR5 YWZC
11	05958600	1	BLT-HEX .38-24X2.00 YWZC GR5
12	06212200	1	BLT-RHDSSQNK .31-18X.62 G5YZ
13	06307400	1	WSHR-LK .31X.097 HVY YWZC

BOM ID	Number	Qty	Description
14	06307400	4	WSHR-LK .31X.097 HVY YWZC
15	06437200	2	WSHR-FL-STL.344X.688X.065YWZC
16	06529200	4	NUT-HEX .31-18 YWZC
17	06543100	1	NUT, LK-TOP-FLG .312-18 YWZC
18	06800028	2	RVT-POP .187x.250 (#64) YWZC
19	07009000	6	NUT, RTNR .25-20 X .56
20	07200725	1	V-BELT, HA - RAW EDGE LAMINATED
21	07200603	1	V-BELT, 3L-WRAPPED CLUTCHING
22	07400108	2	SCR, TAP .25-20 X.5 CAPTIVE
23	08200816	1	ENGINE,
24	04885351	1	FRAME, MAIN - WELDMENT (BLACK)
25	07500102	2	PLUG, HOLE



# ENGINE AND FRAME – 22"

Model 920315

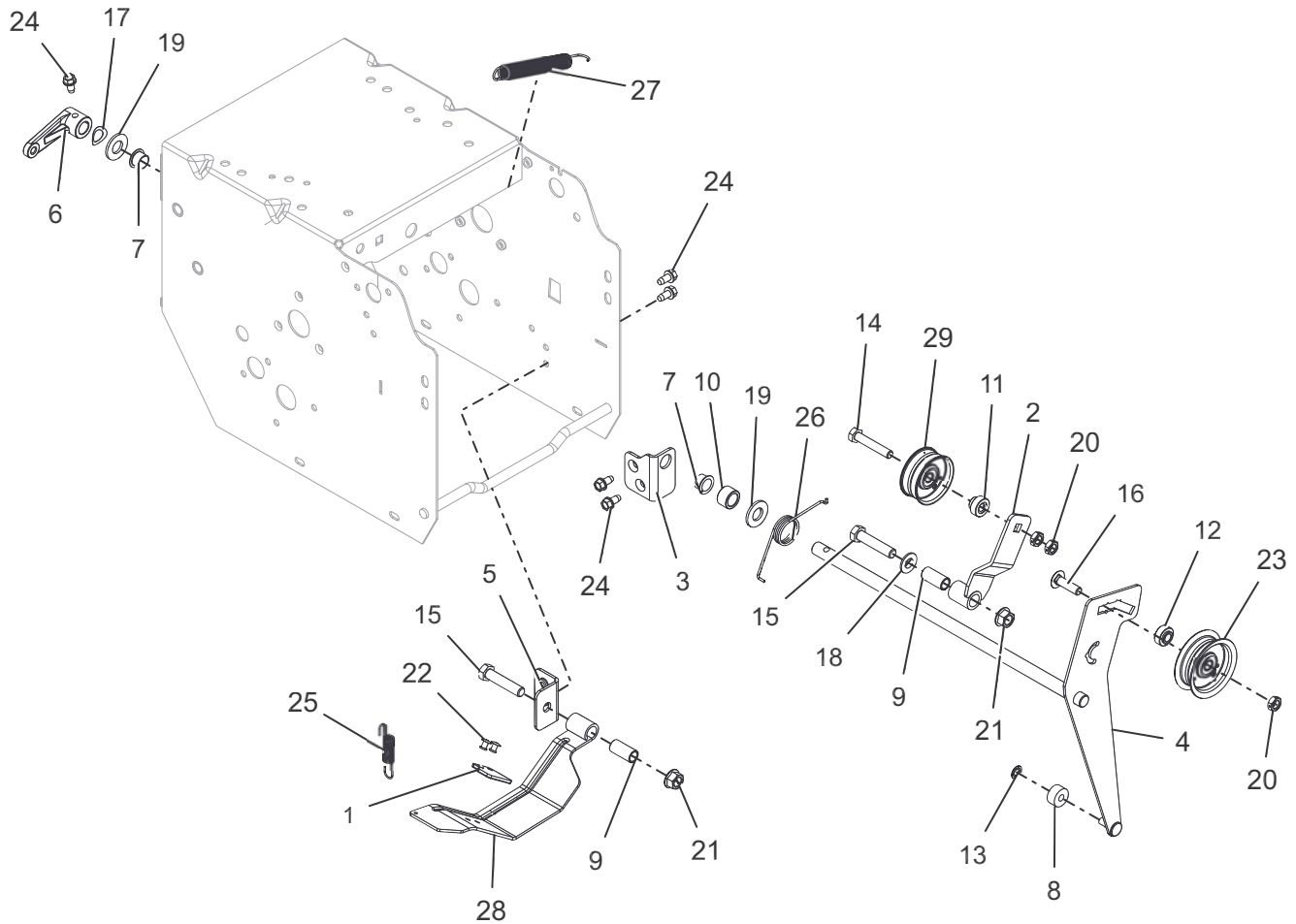


BOM ID	Number	Qty	Description
1	00492351	1	COVER, BOTTOM
2	00657051	1	WLDMT, FRAME BRKT
3	04895151	1	BAFFLE, COMPACT (BLACK)
4	03881000	1	COVER, COMPACT BELT
5	04561800	1	FINGER, BELT
6	04334100	2	STRAP, ENGINE BOLT-WLDMT
7	04827100	1	SHEAVE, AUGER 3/4" PM
8	09735700	2	TRACTION, SHEAVE HALF
9	05900019	6	BLT-HEX .25-20X.75 HWH YWZC GR5
10	05947300	2	BLT-HEX .31-24X.75 GR5 YWZC
11	05958600	1	BLT-HEX .38-24X2.00 YWZC GR5
12	06212200	1	BLT-RHDSSQNK .31-18X.62 G5YZ
13	06307400	1	WSHR-LK .31X.097 HVY YWZC

BOM ID	Number	Qty	Description
14	06307400	4	WSHR-LK .31X.097 HVY YWZC
15	06437200	2	WSHR-FL-STL.344X.688X.065YWZC
16	06529200	4	NUT-HEX .31-18 YWZC
17	06543100	1	NUT, LK-TOP-FLG .312-18 YWZC
18	06800028	2	RVT-POP .187x.250 (#64) YWZC
19	07009000	6	NUT, RTNR .25-20 X .56
20	07200725	1	V-BELT, HA - RAW EDGE LAMINATED
21	07200603	1	V-BELT, 3L-WRAPPED CLUTCHING
22	07400108	2	SCR, TAP .25-20 X.5 CAPTIVE
23	08200802	1	ENGINE,
24	04885351	1	FRAME, MAIN - WELDMENT (BLACK)
25	07500102	2	PLUG, HOLE - 1.00"

# IDLER AND BRAKE

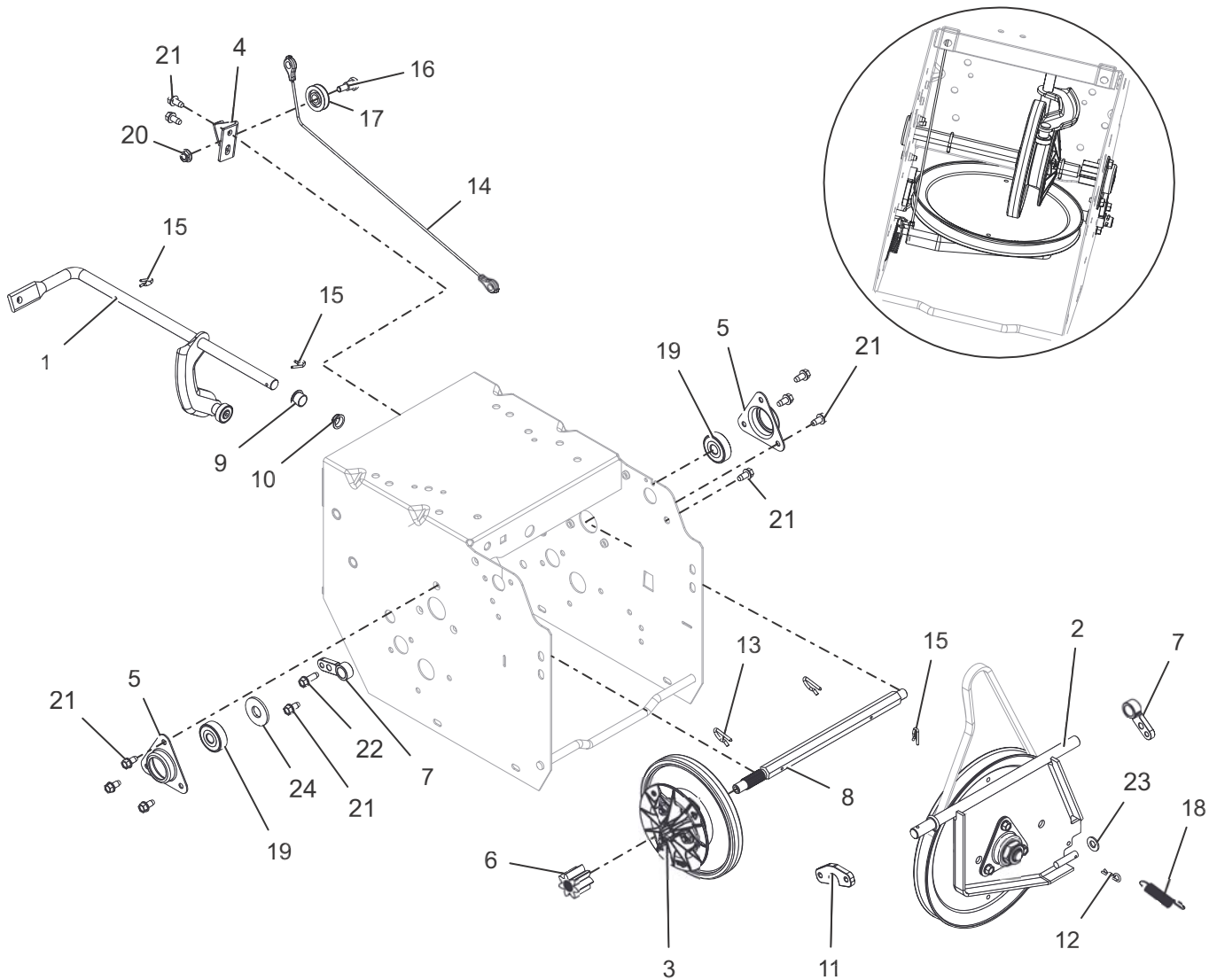
Models All



BOM ID	Number	Qty	Description
1	00180500	1	PAD, BRAKE
2	00493667	1	WLDMT, TRACTION IDLER ARM
3	00495051	1	BRKT, MOUNT - IDLER ARM
4	04892167	1	WLDMT, ATTACHMENT IDLER ARM
5	00495251	1	BRKT, BRAKE MOUNT
6	01987100	1	ARM, CLUTCH - ATTACHMENT
7	05500026	2	BUSHING, POLYLINER - .50 SPLIT
8	05500037	1	BSHG, SLV .265 X .625 X .375
9	05500106	2	BSHG, SLV .385 X .500 X 1.045
10	05500107	1	BSHG, SLV .510 X .751 X .475
11	05501114	1	BSHG, FLG .315X.500X.481X.281
12	05501115	1	BSHG, FLG .315X.500X.358X.281
13	05717600	1	RG-RTNG-EXT .250 X .010
14	05957400	1	BOLT, HEX 0.313-18X1.75 GR5
15	05958500	2	BOLT, HEX 0.375-16X1.75 GR5
16	06200124	1	BLT-RDHDSQSHNK .31-18X1.125 G5YWZC
17	06400005	1	WSHR, WAVE .50X.75X.015 .13FRHT
18	06436200	1	WSHR-FL-STL.406X.812X.065 YWZ
19	06441900	2	WSHR-FL-STL.531X1.06X.095YWZC
20	06500011	3	NUT-LK-CTR-JAM .31-18 YWZC
21	06542000	2	NUT, LK-TOP-FLG .38-16 YWZC
22	06800028	2	RVT-POP .187x.250 (#64) YWZC
23	07338900	1	IDLER, FLAT - 2.00"
24	07400034	5	SCR-TAP .25-20X.50 HWH TR YWZ
25	08300104	1	SPRG, EXTENSION
26	08300326	1	SPRG, TORSION
27	08300528	1	SPRG, EXTENSION
28	52000500	1	ARM, BRAKE - W/PAD
29	07338500	1	IDLER, FLAT - 1.875"

# FRICION DRIVE

Models All



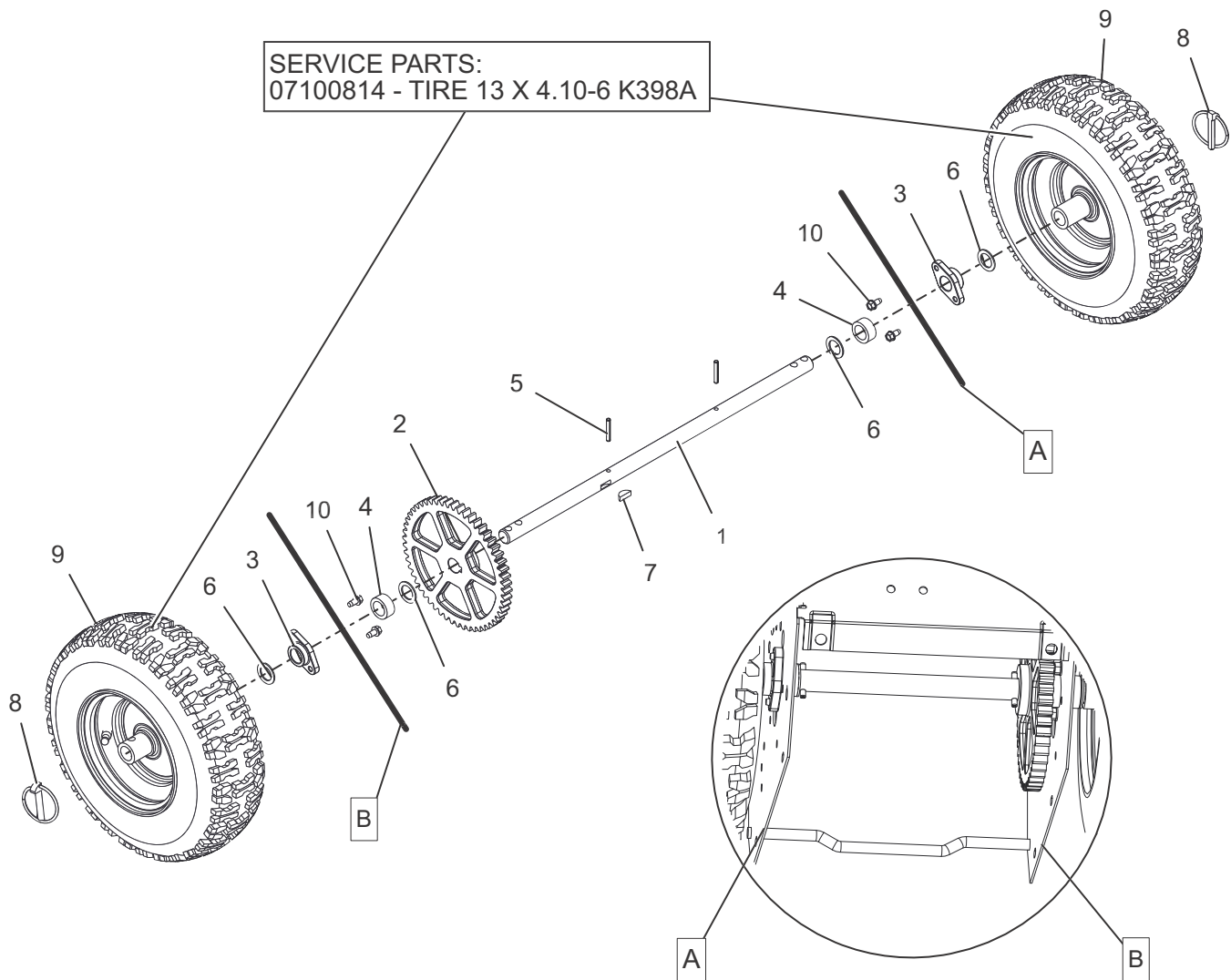
BOM ID	Number	Qty	Description
1	04987300	1	ARM, SHIFT - ASSEMBLY (SMALL DASH)
2	52105000	1	PLATE, SWING-ASSY
3	04861600	1	DISK, FRICTION - ASSEMBLY
4	00373051	1	BRKT, CABLE PULLEY
5	00383000	2	FLANGE, BRG
6	00493900	1	GEAR, 7T PINION
7	03374500	2	BSHG, SUPPORT - SWING GATE
8	04149500	1	SHAFT, HEX W/SPLINE
9	05500026	1	BUSHING, POLYLINER - .50 SPLIT
10	05500028	1	BSHG, POLYLINER - .50 SNAP-IN
11	05500113	1	SPCR, SWING GATE
12	06713500	1	PIN, HAIR INT .08X.18X1.18 YWZC
13	06714500	2	PIN, SPRING CLIP

BOM ID	Number	Qty	Description
14	06900504	1	CABLE, LOWER TRACTION (CMPCT)
15	06944800	3	CLIP, SPRING
16	07000021	1	BOLT, SHLDR -.375 X .375 X .25-20
17	07300012	1	PULLEY, CABLE
18	08300036	1	SPRG, EXTENSION
19	05435200	2	BRG-BALL .437X1.375X.437
20	06500710	1	NUT, LK-CTR-FLG .25-20 YWZC
21	07400034	10	SCR-TAP .25-20X.50 HWH TR YWZ
22	07400111	1	SCR-TAP .25-20X.75 HWH TR YWZ
23	06437200	1	WSHR-FL-STL.344X.688X.065YWZC
24	06442000	1	WSHR-FL-STL.563X1.38X.109YWZC



# WHEELS AND AXLE – 22" & 24"

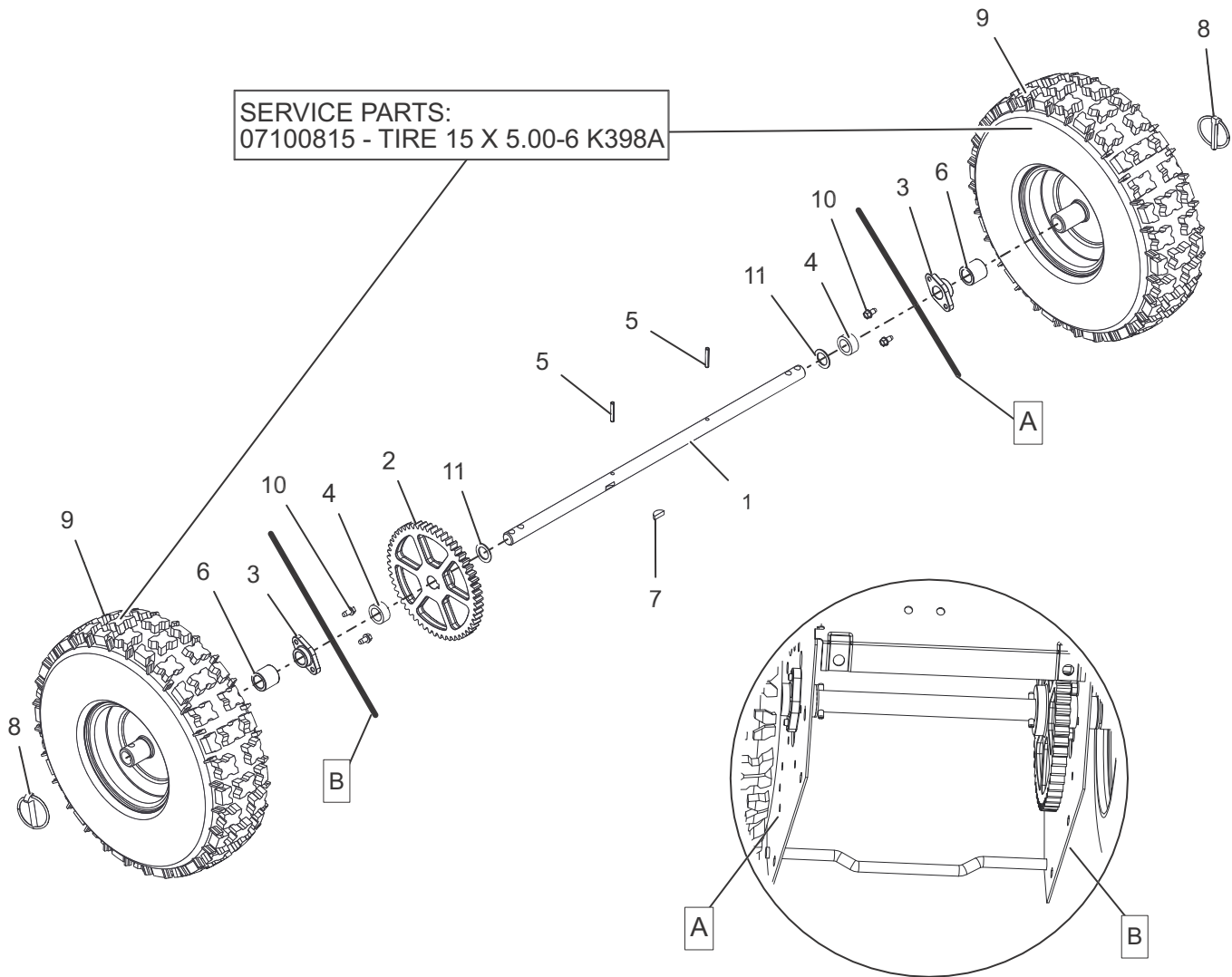
Models 920402, 313, 315



BOM ID	Number	Qty	Description
1	00494200	1	SHAFT, AXLE
2	00657800	1	SPUR, GEAR 54T .75ID X 6.75PD
3	05500101	2	BSHG, .75 X 1.25 X .65
4	05500140	2	BSHG, SLV .766X1.125X.500
5	05800300	2	PIN-ROLL .188X1.25
6	06441400	4	WSHR-FL-STL .754X1.125X.062 YWZC
7	06601200	1	KEY, WDRF .25X.750X.313 SAE91
8	07053700	2	PIN, LOCK .31X1.75
9	07100811	2	TIRE/WHEEL, 13X4.10-6 K398A
10	07400034	4	SCR-TAP .25-20X.50 HWH TR YWZ

# WHEELS AND AXLE – 28"

Model 920314

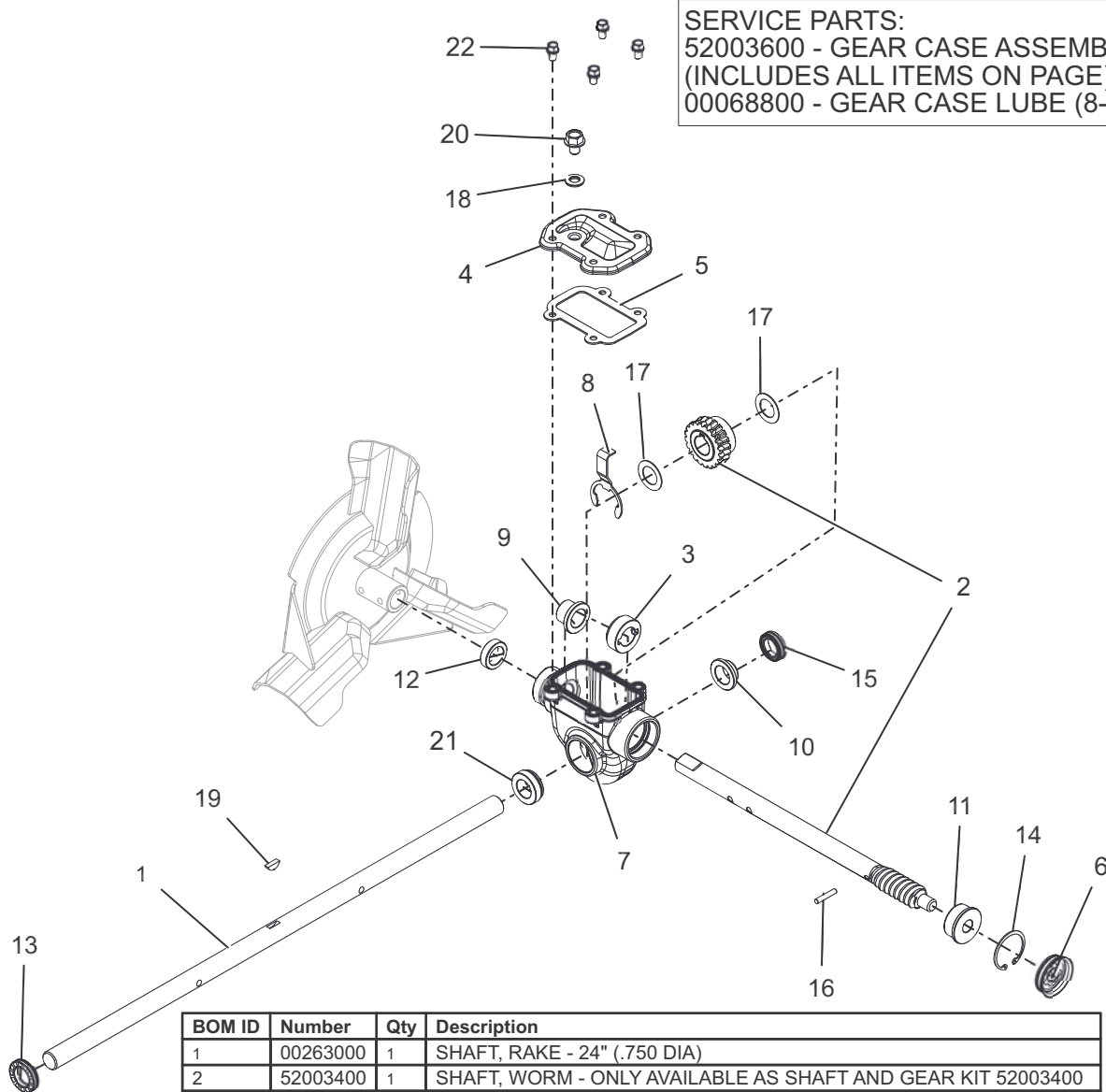


BOM ID	Number	Qty	Description
1	03881800	1	AXLE, WHEEL
2	00657800	1	SPUR, GEAR 54T .75ID X 6.75PD
3	05500101	2	BSHG, .75 X 1.25 X .65
4	05500140	2	BSHG, SLV .766X1.125X.500
5	05800300	2	PIN-ROLL .188X1.25
6	05500917	2	BSHG, SLV .75 X 1.12 X 1.062 X NYL BK
7	06601200	1	KEY, WDRF .25X.750X.313 SAE91
8	07053700	2	PIN, LOCK .31X1.75
9	07100812	2	TIRE/WHEEL, 15X5.00-6 PIN K398A
10	07400034	4	SCR-TAP .25-20X.50 HWH TR YWZ
11	06441400	2	WSHR-FL-STL .754X1.125X.062 YWZC

# GEAR CASE – 24"

Models 920402, 313

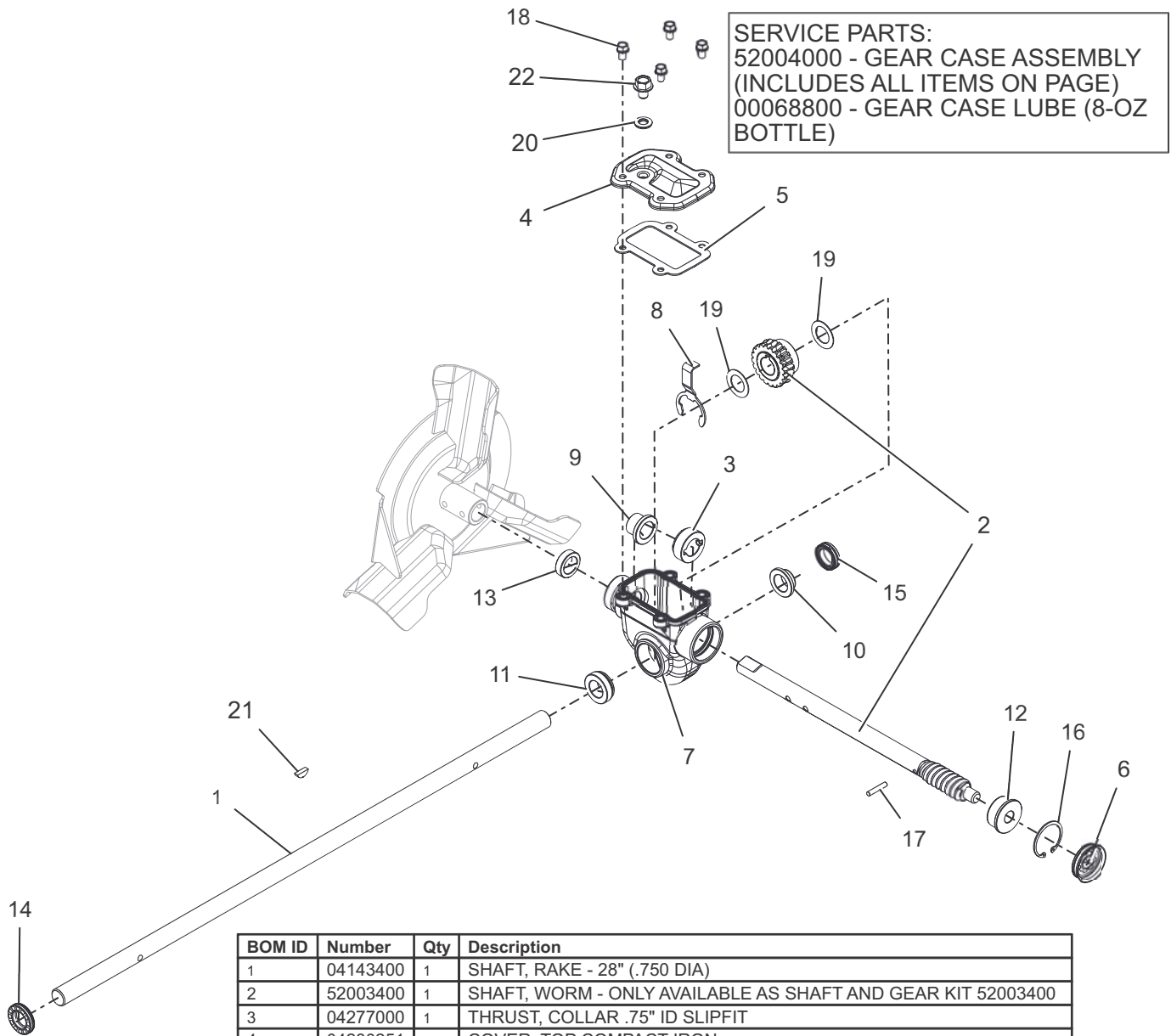
SERVICE PARTS:  
52003600 - GEAR CASE ASSEMBLY  
(INCLUDES ALL ITEMS ON PAGE)  
00068800 - GEAR CASE LUBE (8-OZ BOTTLE)



BOM ID	Number	Qty	Description
1	00263000	1	SHAFT, RAKE - 24" (.750 DIA)
2	52003400	1	SHAFT, WORM - ONLY AVAILABLE AS SHAFT AND GEAR KIT 52003400
3	04277000	1	THRUST, COLLAR .75" ID SLIPFIT
4	04280251	1	COVER, TOP COMPACT IRON
5	04282400	1	GSKT, TOP COMPACT GEARCASE
6	04302800	1	COVER, GEAR CASE 1.50"
7	04304600	1	GEARCASE COMPACT ALUMINUM
8	04323600	1	BSHG, RETAINER COMPACT
9	05501020	1	BSHG, FLG .755 X .878 X .75 X 1.25
10	05501106	1	BSHG, FLANGED .755X.878X.424X1.25
11	05501108	1	BSHG, FLANGED .503X1.303X.62X1.465
12	05600501	1	SEAL, OIL .748 X 1.125 X .312 TB2-H
13	05600508	1	SEAL, OIL .748 X 1.300 X .250
14	05700212	1	RING, RETAINING -INT 1.500X.050
15	05600509	1	SEAL, OIL .748 X 1.125 X .312
16	05800207	1	PIN, STR .188 X 1.00 6150
17	06400912	2	WSHR-FL-STL, .760 X 1.225 X .032 YZ
18	06400920	1	WASHER-FLAT-STL, SEAL
19	06609300	1	KEY, WDRF .19X.63 HRD #61
20	07400110	1	SCR -ROLOK .38-16X.50 HWH YWZC
21	05501107	1	BSHG, FLANGED COMPACT, RIGHT
22	05901510	4	BOLT, SEMS - .25-20X.50 GR5 YWZC

# GEAR CASE – 28"

## Model 920314

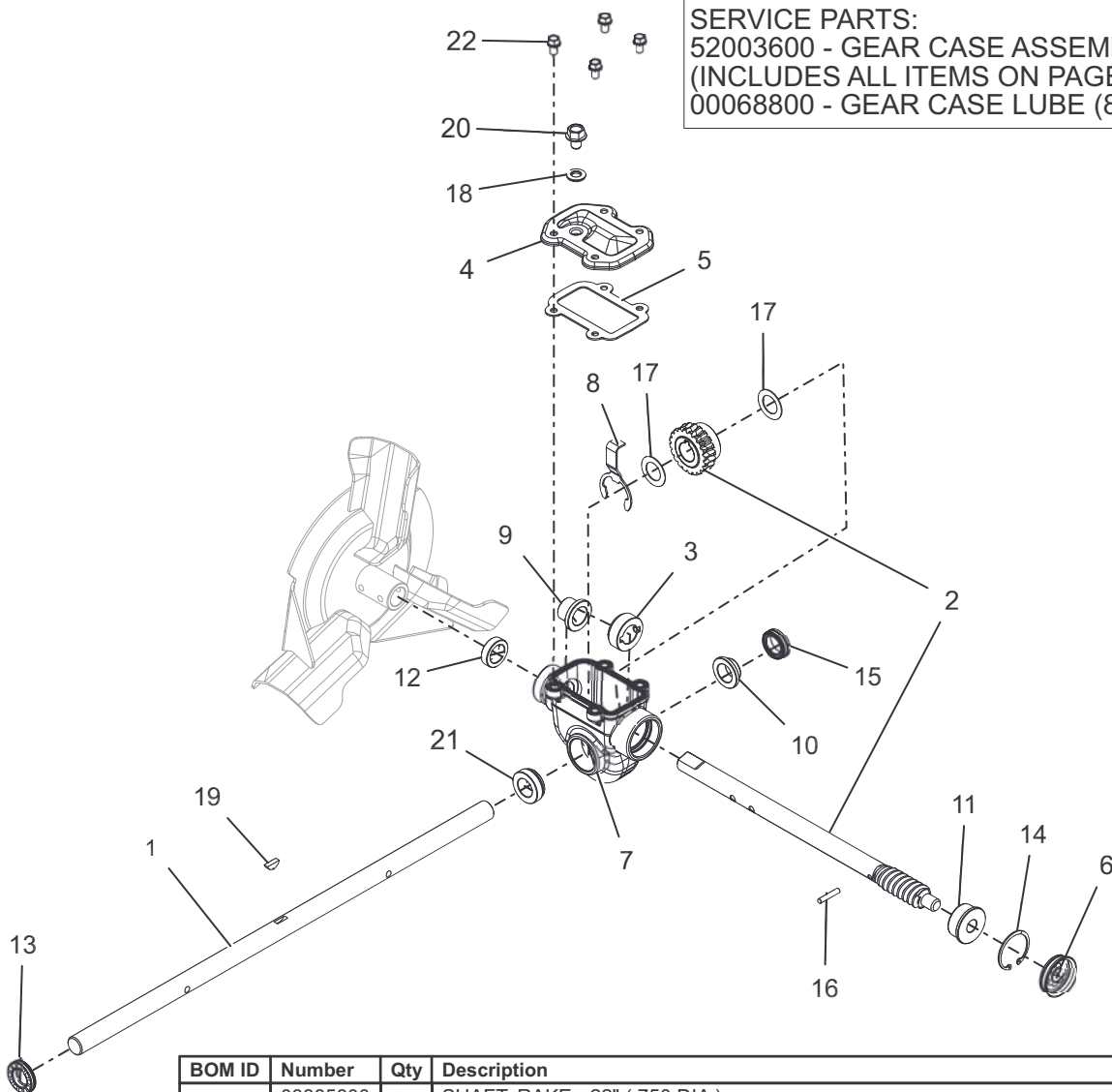


BOM ID	Number	Qty	Description
1	04143400	1	SHAFT, RAKE - 28" (.750 DIA)
2	52003400	1	SHAFT, WORM - ONLY AVAILABLE AS SHAFT AND GEAR KIT 52003400
3	04277000	1	THRUST, COLLAR .75" ID SLIPFIT
4	04280251	1	COVER, TOP COMPACT IRON
5	04282400	1	GSKT, TOP COMPACT GEARCASE
6	04302800	1	COVER, GEAR CASE 1.50"
7	04304600	1	GEARCASE COMPACT ALUMINUM
8	04323600	1	BSHG, RETAINER COMPACT
9	05501020	1	BSHG, FLG .755 X .878 X .75 X 1.25
10	05501106	1	BSHG, FLANGED .755X.878X.424X1.25
11	05501107	1	BSHG, FLANGED COMPACT, RIGHT
12	05501108	1	BSHG, FLANGED .503X1.303X.62X1.465
13	05600501	1	SEAL, OIL .748 X 1.125 X .312 TB2-H
14	05600508	1	SEAL, OIL .748 X 1.300 X .250
15	05600509	1	SEAL, OIL .748 X 1.125 X .312
16	05700212	1	RING, RETAINING -INT 1.500X.050
17	05800207	1	PIN, STR .188 X 1.00 6150
18	05901510	4	BOLT, SEMS - .25-20X.50 GR5 YWZC
19	06400912	2	WSHR-FL-STL, .760 X 1.225 X .032 YZ
20	06400920	1	WASHER-FLAT-STL, SEAL
21	06609300	1	KEY, WDRF .19X.63 HRD #61
22	07400110	1	SCR -ROLOK .38-16X.50 HWH YWZC

# GEAR CASE – 22"

## Model 920315

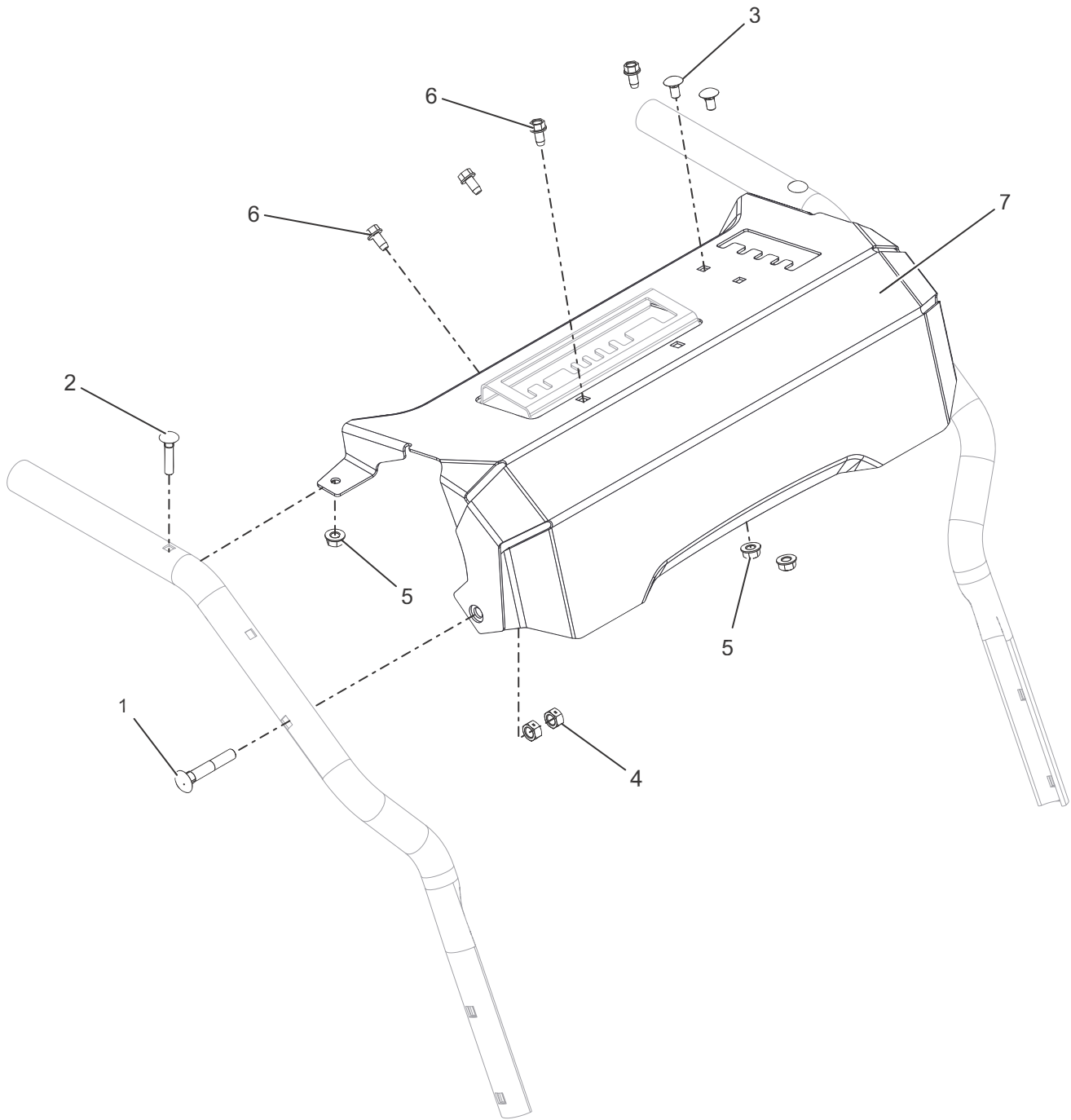
**SERVICE PARTS:**  
 52003600 - GEAR CASE ASSEMBLY  
 (INCLUDES ALL ITEMS ON PAGE)  
 00068800 - GEAR CASE LUBE (8-OZ BOTTLE)



BOM ID	Number	Qty	Description
1	03885800	1	SHAFT, RAKE - 22" (.750 DIA )
2	52003400	1	SHAFT, WORM - ONLY AVAILABLE AS SHAFT AND GEAR KIT 52003400
3	04277000	1	THRUST, COLLAR .75" ID SLIPFIT
4	04280251	1	COVER, TOP COMPACT IRON
5	04282400	1	GSKT, TOP COMPACT GEARCASE
6	04302800	1	COVER, GEAR CASE 1.50"
7	04304600	1	GEARCASE COMPACT ALUMINUM
8	04323600	1	BSHG, RETAINER COMPACT
9	05501020	1	BSHG, FLG .755 X .878 X .75 X 1.25
10	05501106	1	BSHG, FLANGED .755X.878X.424X1.25
11	05501108	1	BSHG, FLANGED .503X1.303X.62X1.465
12	05600501	1	SEAL, OIL .748 X 1.125 X .312 TB2-H
13	05600508	1	SEAL, OIL .748 X 1.300 X .250
14	05700212	1	RING, RETAINING -INT 1.500X.050
15	05600509	1	SEAL, OIL .748 X 1.125 X .312
16	05800207	1	PIN, STR .188 X 1.00 6150
17	06400912	2	WSHR-FL-STL, .760 X 1.225 X .032 YZ
18	06400920	1	WASHER-FLAT-STL, SEAL
19	06609300	1	KEY, WDRF .19X.63 HRD #61
20	07400110	1	SCR -ROLOK .38-16X.50 HWH YWZC
21	05501107	1	BSHG, FLANGED COMPACT, RIGHT
22	05901510	4	BOLT, SEMS - .25-20X.50 GR5 YWZC

# CONTROL PANEL

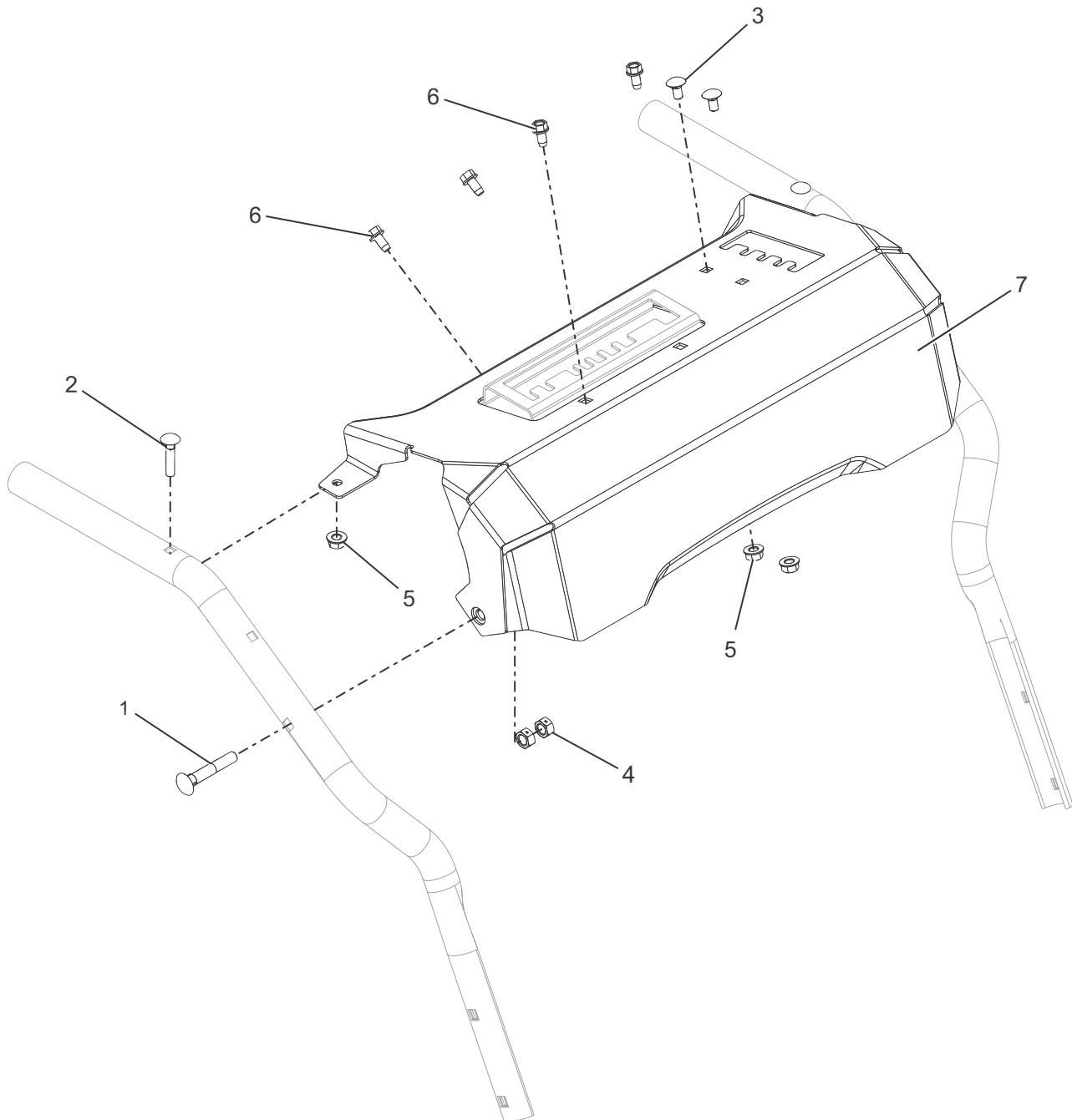
Models 920402, 314



BOM ID	Number	Qty	Description
1	06200207	2	BLT, RDHD XLSQNK .31-18X2.0 G5YZ
2	06220100	2	BLT, RDHDXLSQNK .25-20X1.25 G5YZ
3	06220600	2	BOLT, CARRIAGE 0.25-20X0.5 GR5
4	06529800	4	NUT-LK-CTR .31-18 YWZC
5	06543500	4	NUT, LK-TOP-FLG .25-20 YWZC
6	07400034	4	SCR-TAP .25-20X.50 HWH TR YWZ
7	52007300	1	PANEL, CONTROL

# CONTROL PANEL

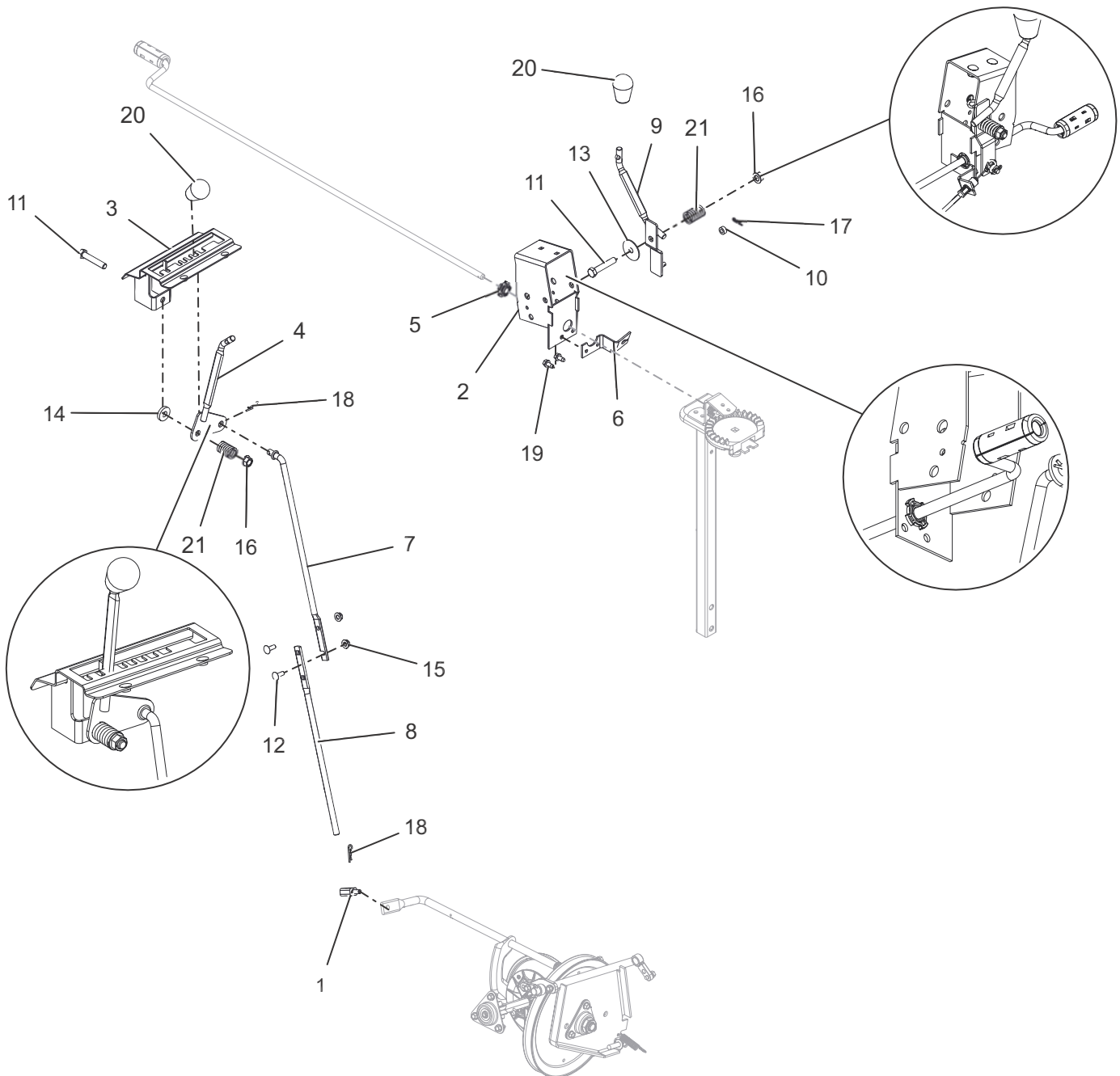
Model 920313, 315



BOM ID	Number	Qty	Description
1	06200207	2	BLT, RDHD XLSQNK .31-18X2.0 G5YZ
2	06220100	2	BLT, RDHDXLSQNK .25-20X1.25 G5YZ
3	06220600	2	BOLT, CARRIAGE 0.25-20X0.5 GR5
4	06529800	4	NUT-LK-CTR .31-18 YWZC
5	06543500	4	NUT, LK-TOP-FLG .25-20 YWZC
6	07400034	4	SCR-TAP .25-20X.50 HWH TR YWZ
7	52007200	1	PANEL, CONTROL

# CONTROLS

Models 920402, 314



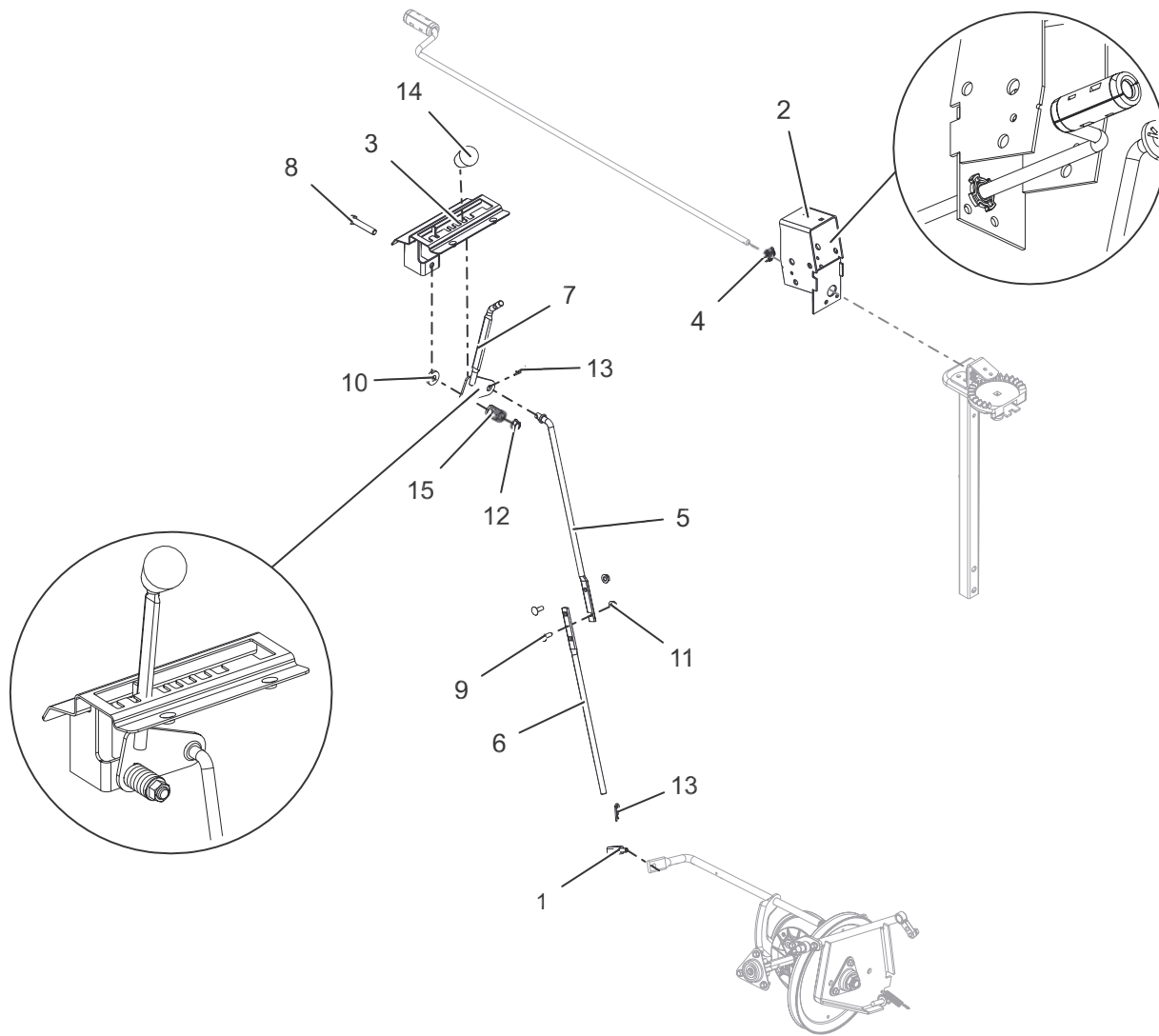
BOM ID	Number	Qty	Description
1	00386700	1	PIVOT, SHIFT ROD .375-16 (TRUNN)
2	04316651	1	WLDMT, BRKT - INTERLOCK
3	04317751	1	WLDMT, DETENT PLATE-COMPACT
4	04846700	1	LEVER, CONTROL - SHIFT (WELDMENT)
5	04322700	1	BSHG, CRANK - CHUTE
6	04333100	1	ANCHOR, DEFLECTOR CABLE
7	04334967	1	ROD, SHIFT UPPER
8	04753767	1	ROD, SHIFT - LOWER (BLACK)
9	04846600	1	WLDMT, CONTROL LEVER - SM (DEFL)
10	05501012	1	BSHG, SLV - .265X.500X.219
11	05963300	2	BOLT, HEX 0.375-16X2 GR5

BOM ID	Number	Qty	Description
12	06219900	2	BOLT, CARRIAGE 0.25-20X0.75 GR5
13	06439300	1	WSHR-FL-STL .380X1.50X.062 YWZ
14	06444000	1	WSHR-FL-STL .406X1.00X.188 YWZC
15	06500710	2	NUT, LK-CTR-FLG .25-20 YWZC
16	06542000	2	NUT, LK-TOP-FLG .38-16 YWZC
17	06701900	1	PIN-HAIR INT .06X.18X.77
18	06713500	2	PIN, HAIR INT .08X.18X1.18 YWZC
19	07400034	2	SCR-TAP .25-20X.50 HWH TR YWZ
20	07500224	2	KNOB, SOFT TEARDROP, PUSH-ON BLK
21	08335700	2	SPRG, COMPRESSION



# CONTROLS

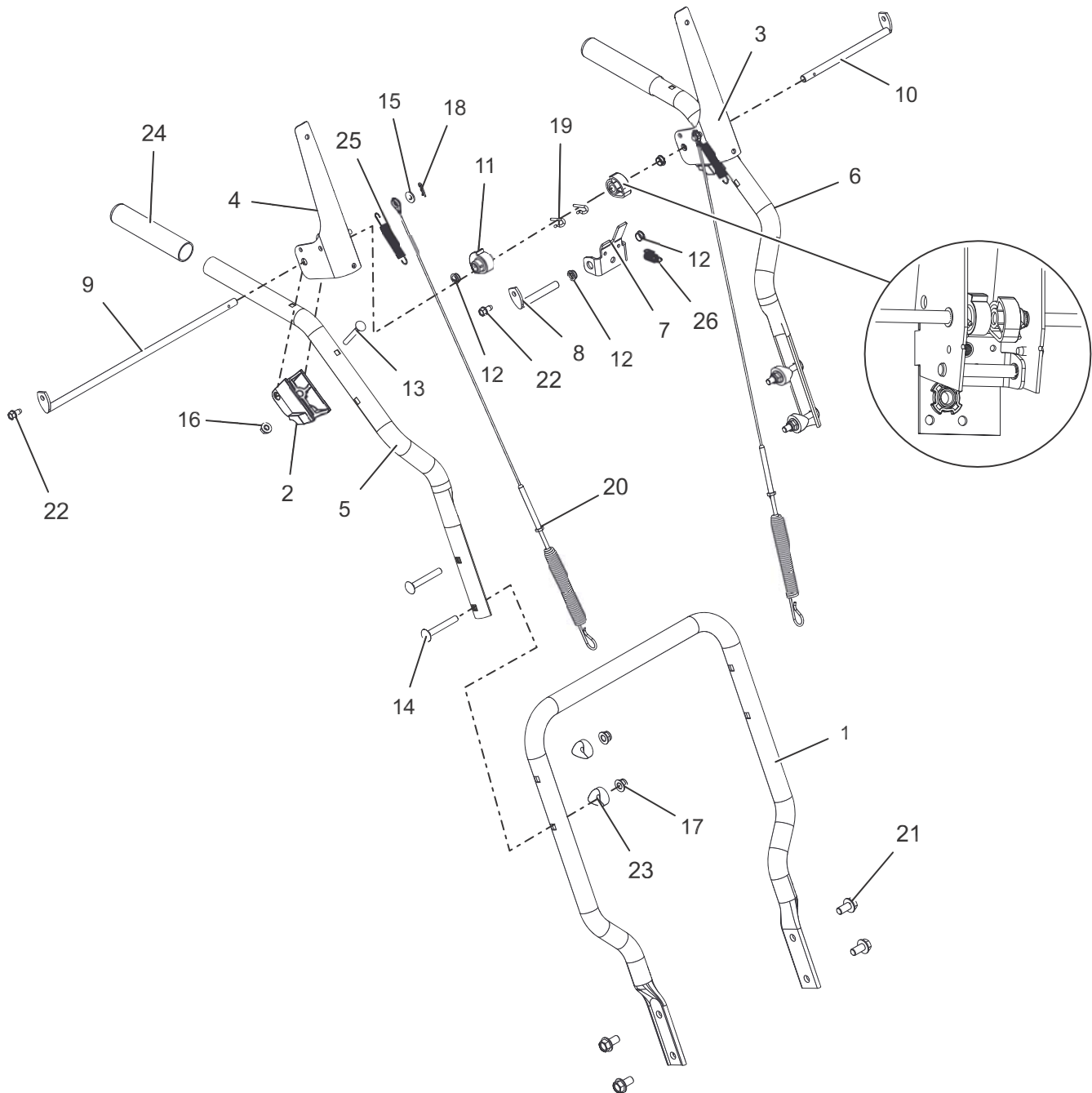
## Model 920313, 315



BOM ID	Number	Qty	Description
1	00386700	1	PIVOT, SHIFT ROD .375-16 (TRUNN)
2	04316651	1	WLDMT, BRKT - INTERLOCK
3	04317751	1	WLDMT, DETENT PLATE-COMPACT
4	04322700	1	BSHG, CRANK - CHUTE
5	04334967	1	ROD, SHIFT UPPER
6	04753767	1	ROD, SHIFT - LOWER (BLACK)
7	04846700	1	LEVER, CONTROL - SHIFT (WELDMENT)
8	05963300	1	BOLT, HEX 0.375-16X2 GR5
9	06219900	2	BOLT, CARRIAGE 0.25-20X0.75 GR5
10	06444000	1	WSHR-FL-STL .406X1.00X.188 YWZC
11	06500710	2	NUT, LK-CTR-FLG .25-20 YWZC
12	06542000	1	NUT, LK-TOP-FLG .38-16 YWZC
13	06713500	2	PIN, HAIR INT .08X.18X1.18 YWZC
14	07500224	1	KNOB, SOFT TEARDROP, PUSH-ON BLK
15	08335700	1	SPRG, COMPRESSION

# HANDLEBARS

Models All



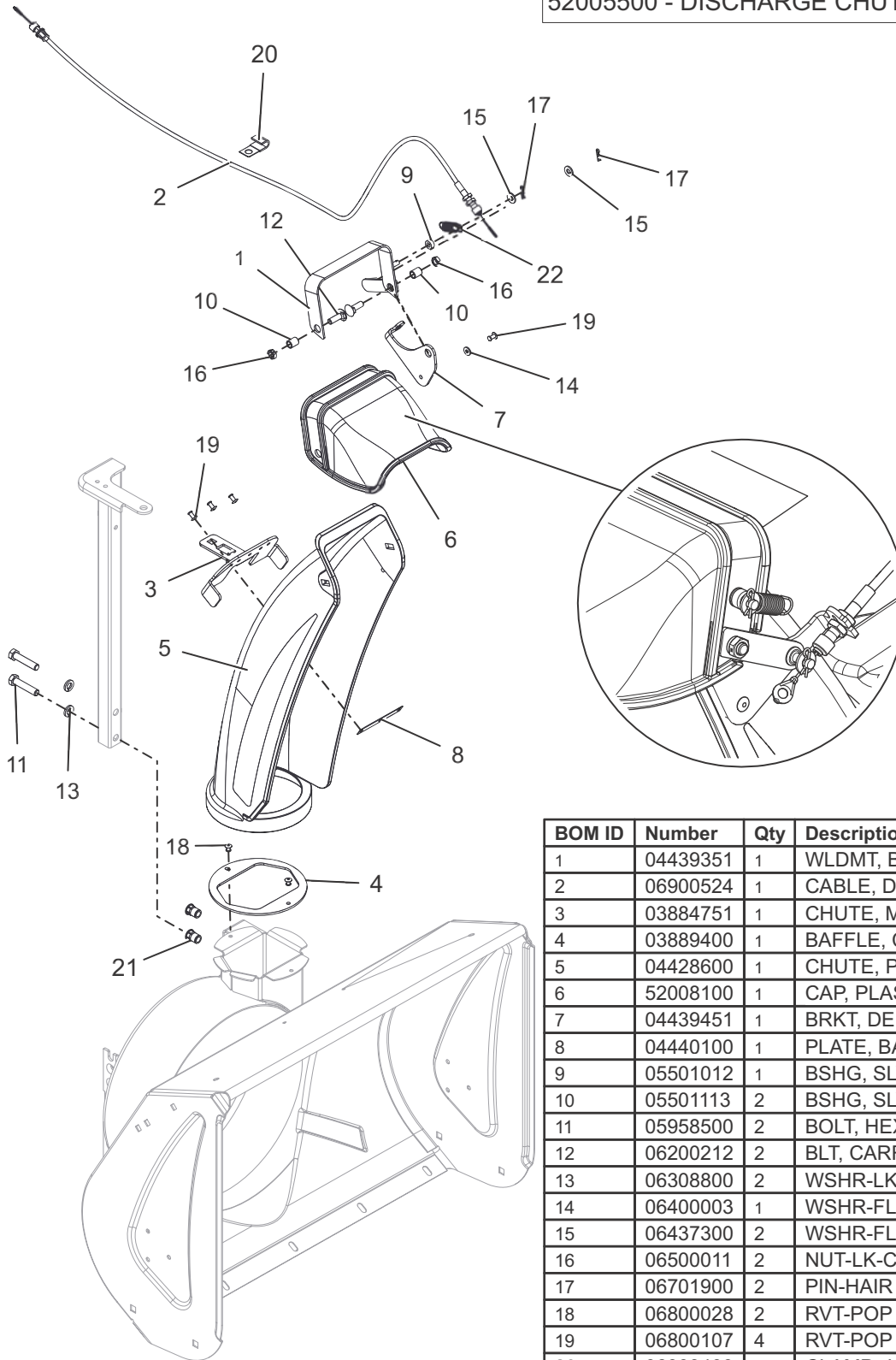
BOM ID	Number	Qty	Description
1	00597451	1	HANDLEBAR, LOWER COMPACT
2	05073000	2	BLOCK, CLUTCH PADDLE
3	04310451	1	WLDMT, CLUTCH HANDLE - LH
4	04310551	1	WLDMT, CLUTCH HANDLE - RH
5	04318351	1	HANDLEBAR, UPPER - RH
6	04318451	1	HANDLEBAR, UPPER - LH
7	04320400	1	BRKT, INTERLOCK ARM
8	04320500	1	ROD, PIVOT - INTERLOCK
9	04321500	1	ROD, PADDLE MOUNT - LONG
10	04321600	1	ROD, PADDLE MOUNT - SHORT
11	04322100	2	CAM, INTERLOCK
12	05500020	4	BSHG, POLYLINER-.38 SNAPIN
13	06209300	2	BLT, RDHDXLSQNK .25-20X2.0 G5YZ
14	06221600	4	BOLT, CARRIAGE 0.3125-18X2.25 GR5

BOM ID	Number	Qty	Description
15	06437300	2	WSHR-FL-STL.281X.62X.065 YWZC
16	06543500	2	NUT, LK-TOP-FLG .25-20 YWZC
17	06545400	4	NUT-LK-NYL-FLG .31-18 YWZC
18	06701900	2	PIN-HAIR INT .06X.18X.77
19	06714500	2	PIN, SPRING CLIP
20	06900438	2	CABLE, AUGER & UPPER TRACTION
21	07028500	4	BLT-SERHFWH .38-16X.75 YWZC
22	07400034	3	SCR-TAP .25-20X.50 HWH TR YWZ
23	07500005	4	SPCR, HANDLEBAR
24	07500239	2	GRIP, HANDLE
25	08300527	2	SPRG, EXTENSION
26	08337000	1	SPRG, EXTENSION

# DISCHARGE CHUTE

Models 920402, 314

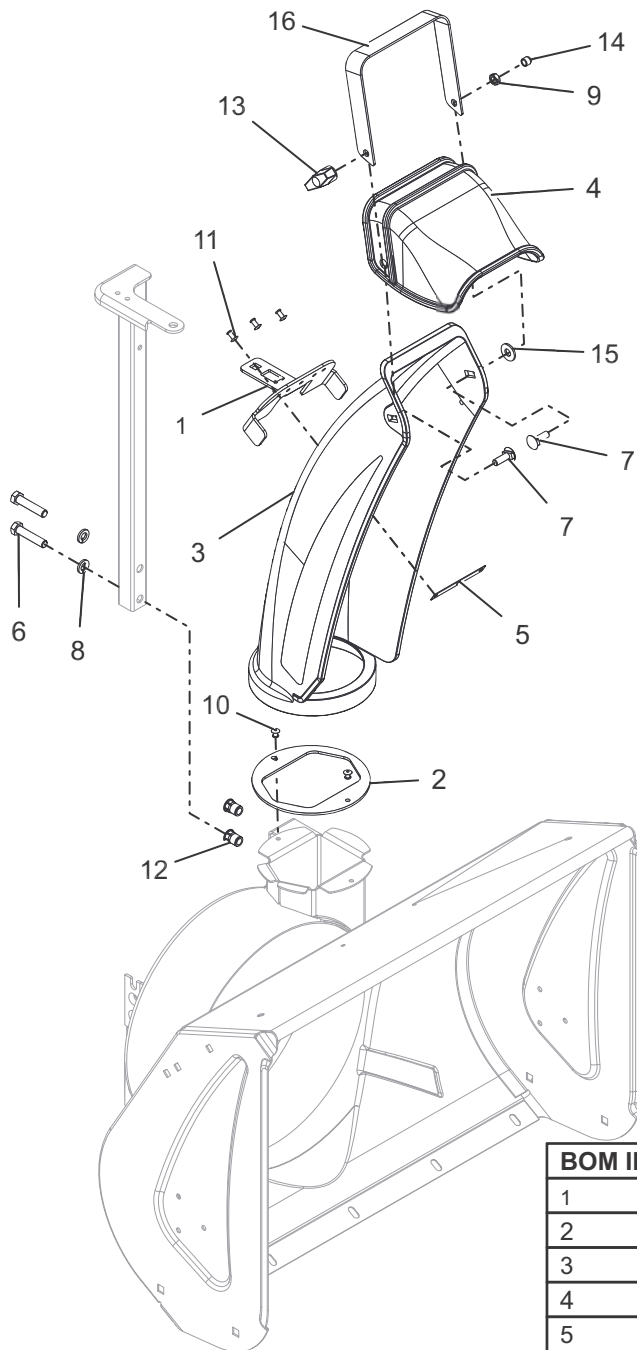
SERVICE PARTS:  
52005500 - DISCHARGE CHUTE W/CAP AND DECAL



BOM ID	Number	Qty	Description
1	04439351	1	WLDMT, BRKT PLASTIC CAP
2	06900524	1	CABLE, DEFLECTOR - SNO-TEK
3	03884751	1	CHUTE, MOUNT BRACKET
4	03889400	1	BAFFLE, COMPACT DISCHARGE
5	04428600	1	CHUTE, PLASTIC DISCHARGE
6	52008100	1	CAP, PLASTIC - SNO-TEK (W/DECAL)
7	04439451	1	BRKT, DEFLECTOR
8	04440100	1	PLATE, BACK CHUTE MOUNT
9	05501012	1	BSHG, SLV - .265X.500X.219
10	05501113	2	BSHG, SLV .330X.455X.550
11	05958500	2	BOLT, HEX 0.375-16X1.75 GR5
12	06200212	2	BLT, CARRIAGE T-NECK
13	06308800	2	WSHR-LK .38X.094 REG YWZC
14	06400003	1	WSHR-FL-STL .196X.500X.06 YWZC
15	06437300	2	WSHR-FL-STL.281X.62X.065 YWZC
16	06500011	2	NUT-LK-CTR-JAM .31-18 YWZC
17	06701900	2	PIN-HAIR INT .06X.18X.77
18	06800028	2	RVT-POP .187x.250 (#64) YWZC
19	06800107	4	RVT-POP .187x.375 (#66) BLACK
20	06909400	1	CLAMP, J
21	07001612	2	NUT, THREADED INSERT .38-16
22	08300532	1	SPRG, EXTENSION

# DISCHARGE CHUTE

Models 920313, 315

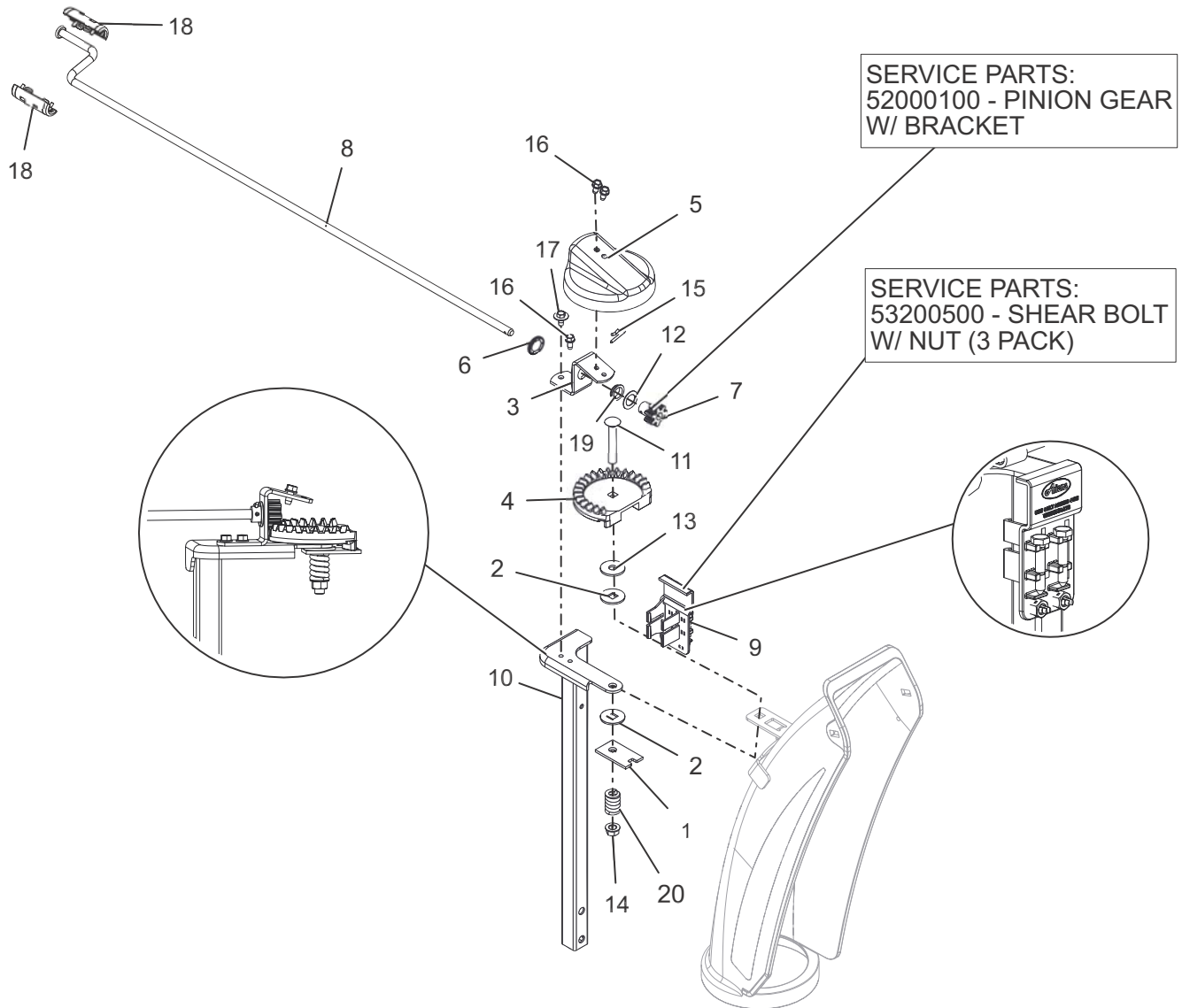


SERVICE PARTS:  
52005600 - DISCHARGE  
CHUTE W/ CAP AND DECAL

BOM ID	Number	Qty	Description
1	03884751	1	CHUTE, MOUNT BRACKET
2	03889400	1	BAFFLE, COMPACT DISCHARGE
3	04428600	1	CHUTE, PLASTIC DISCHARGE
4	52008100	1	CAP, PLASTIC - SNO-TEK (W/DECAL)
5	04440100	1	PLATE, BACK CHUTE MOUNT
6	05958500	2	BOLT, HEX 0.375-16X1.75 GR5
7	06200212	2	BLT, CARRIAGE T-NECK
8	06308800	2	WSHR-LK .38X.094 REG YWZC
9	06500011	1	NUT-LK-CTR-JAM .31-18 YWZC
10	06800028	2	RVT-POP .187x.250 (#64) YWZC
11	06800107	3	RVT-POP .187x.375 (#66) BLACK
12	07001612	2	NUT, THREADED INSERT .38-16
13	07500228	1	KNOB, WING .31-18 UNC
14	07500230	1	CAP, END .281 x .313
15	06435700	1	WSHR-FL-STL.38X.875X.083 YWZC
16	04443351	1	HANDLE, MANUAL CAP

# CHUTE ROTATION

Models All

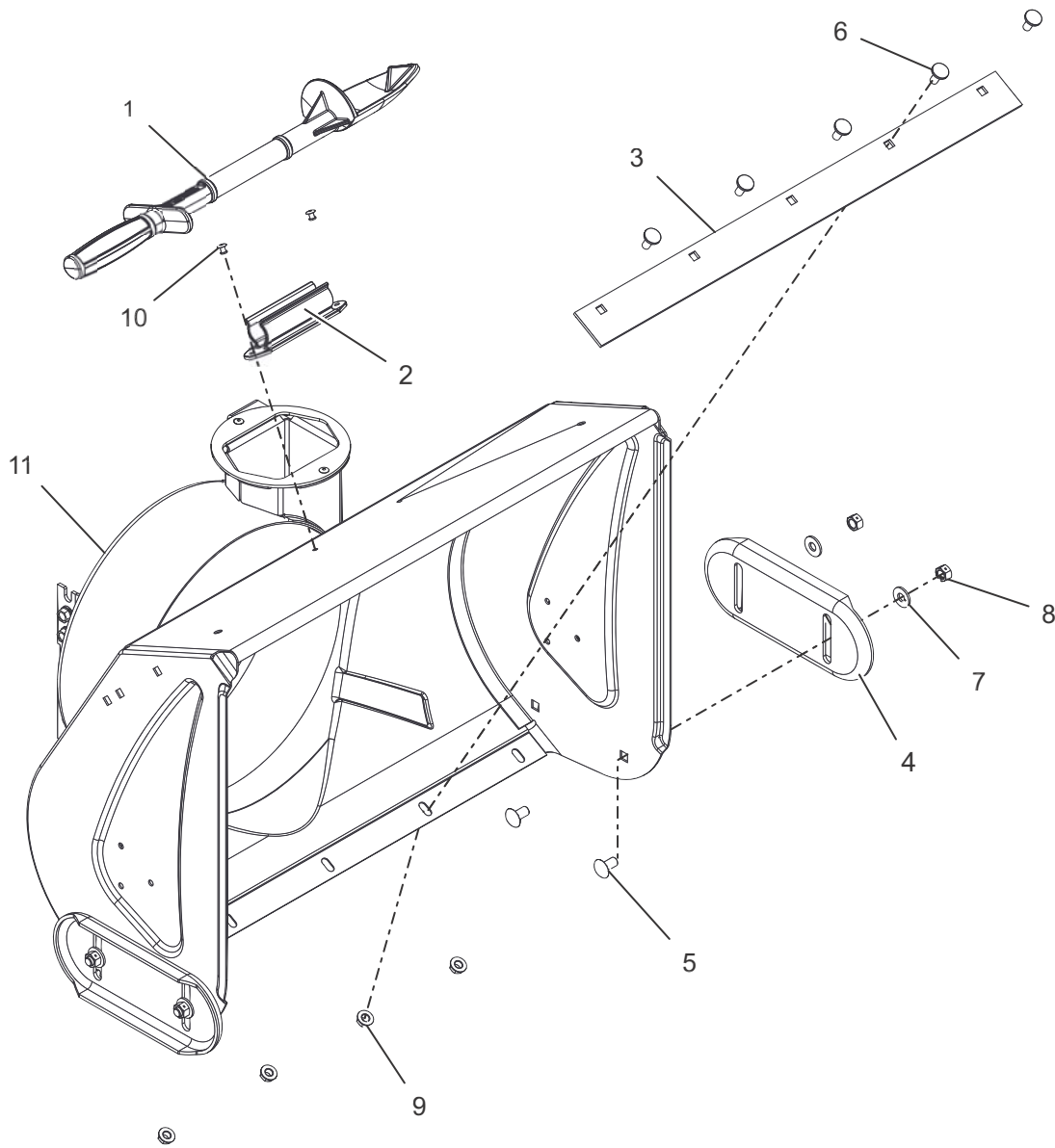


BOM ID	Number	Qty	Description
1	00398000	1	PLATE, FRICTION
2	01123800	2	WSHR, FRICTION
3	01972451	1	BRKT, PINION GEAR
4	03222900	1	GEAR, CHUTE
5	03223000	1	COVER, GEAR
6	03224300	1	NUT, PUSH - .625
7	03735300	1	GEAR, PINION - CHUTE
8	04338000	1	ROD, CHUTE CRANK, COMP&SNOTEK
9	52004500	1	HOLDER, W/ SMALL SHEAR BOLT
10	03883751	1	CHUTE, PEDESTAL TALL COMPACT
11	06224400	1	BOLT, CARRIAGE 0.375-16X2.5 GR5

BOM ID	Number	Qty	Description
12	06400009	1	WSHR-THRST .625X1.00X.03
13	06400917	1	WSHR-FL-STL .406X1.25X.10 YWZC
14	06542000	1	NUT, LK-TOP-FLG .38-16 YWZC
15	06714500	1	PIN, SPRING CLIP
16	07400034	3	SCR-TAP .25-20X.50 HWH TR YWZ
17	07400104	1	SCR, TAP .25-20X.50 LGHWH TR
18	07500129	2	KNOB, CHUTE CRANK - SNAP BLK
19	05500021	1	BSHG, POLYLINER - .63 SNAP-IN
20	08320900	1	SPRG, COMPRESSION

# HOUSING – 24"

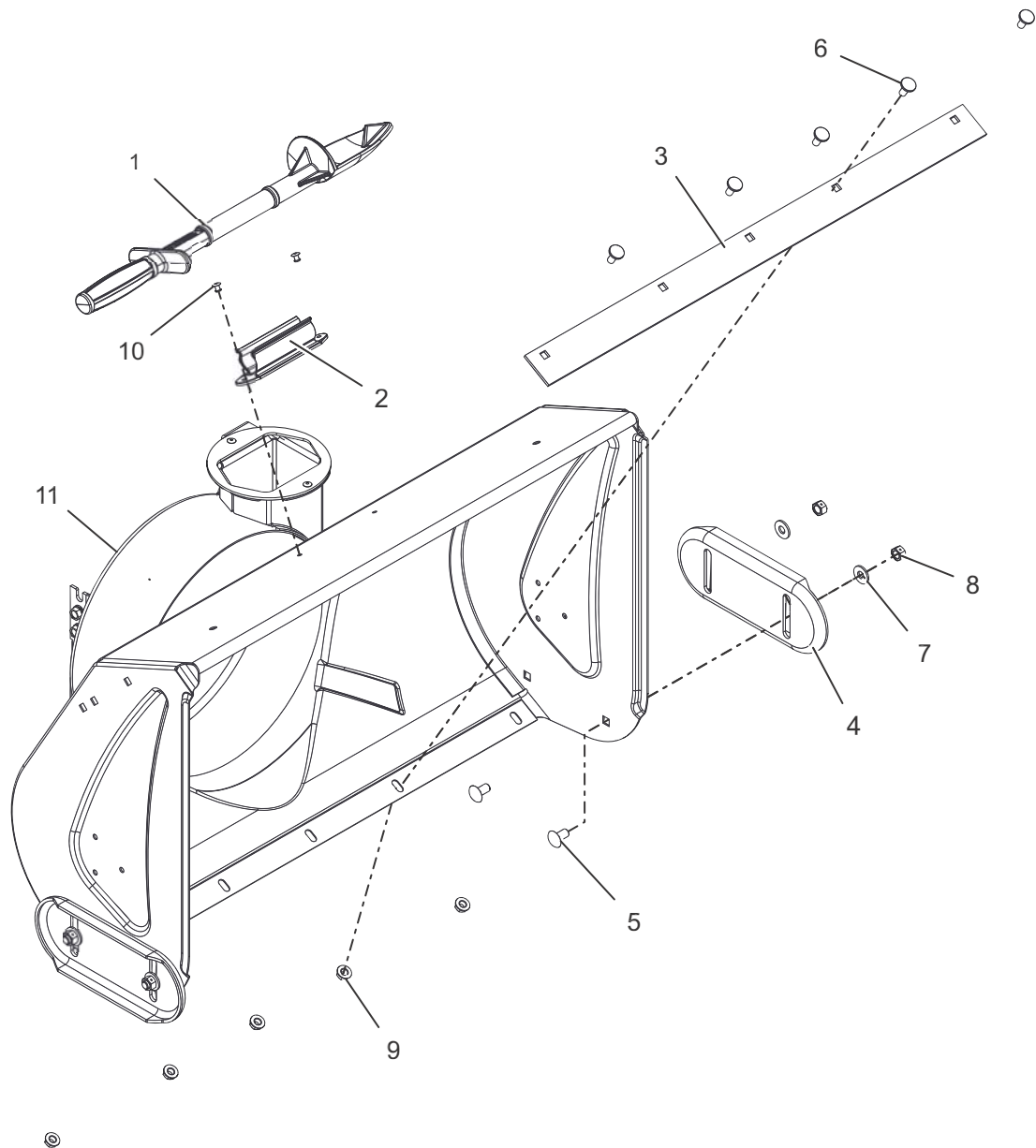
Models 920402, 313



BOM ID	Number	Qty	Description
1	00170200	1	DEVICE,SNOW CLEAN OUT
2	00170300	1	MOUNT, SNOW CLEAN OUT
3	03884451	1	BLADE, SCRAPER - 24" COMPACT
4	04431751	2	SKID, SHOE REVERSIBLE
5	06200004	4	BLT-RHDSSQNK .38-16X.75 G5YZ
6	06200209	5	BLT, RDHDSQSHK MODIFIED .31-18 X .62 YZ
7	06435700	4	WSHR-FL-STL.38X.875X.083 YWZC
8	06529600	4	NUT-LK-CTR .38-16 YWZC
9	06543100	5	NUT, LK-TOP-FLG .312-18 YWZC
10	06800028	2	RVT-POP .187x.250 (#64) YWZC
11	52005200	1	HOUSING, BLOWER - 24" WITH DECAL

# HOUSING – 28"

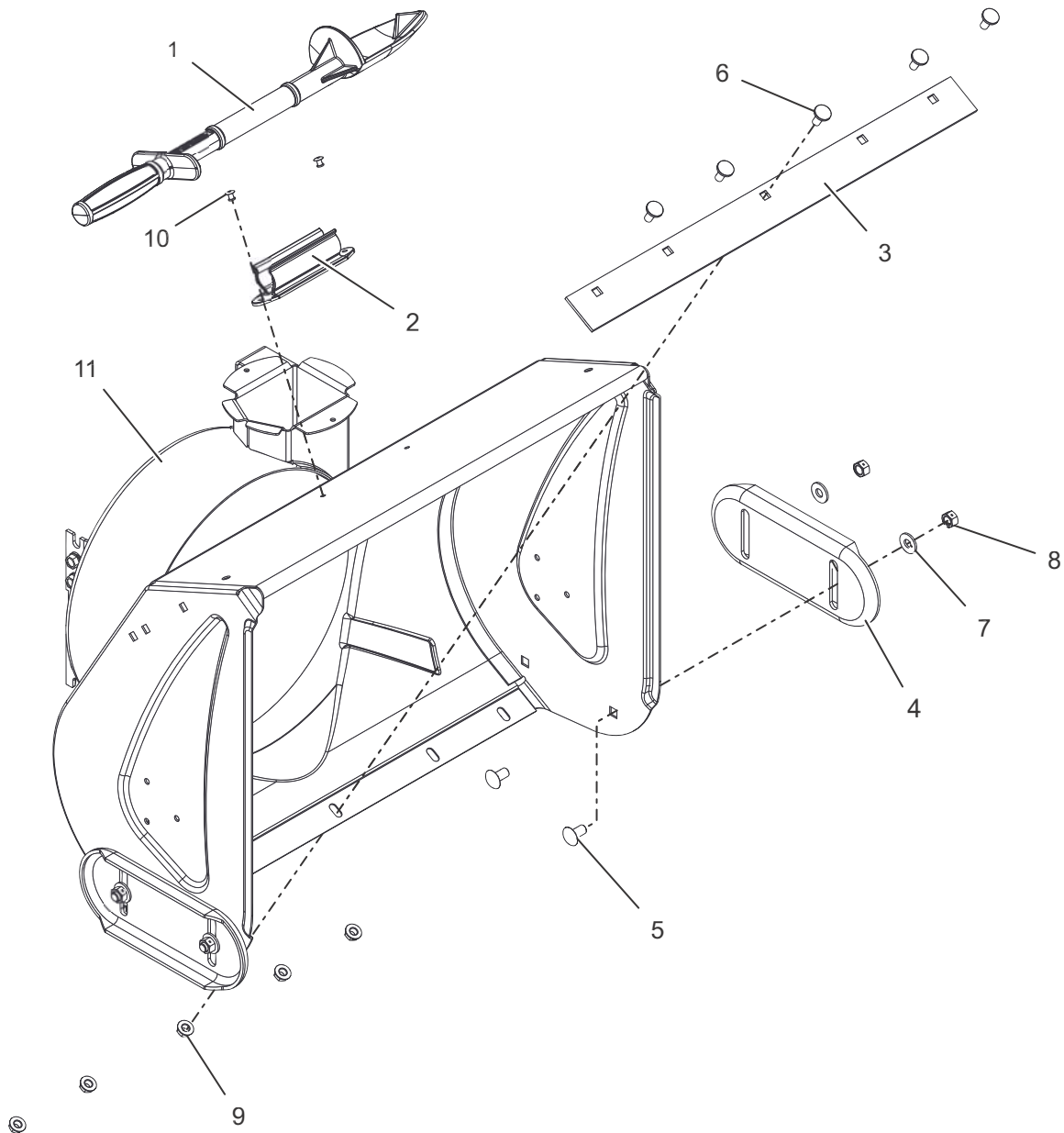
Model 920314



BOM ID	Number	Qty	Description
1	00170200	1	DEVICE, SNOW CLEAN OUT
2	00170300	1	MOUNT, SNOW CLEAN OUT
3	04145451	1	BLADE, SCR -28" COMPACT
4	04431751	2	SKID, SHOE REVERSIBLE
5	06200004	4	BLT-RHDSSQNK .38-16X.75 G5YZ
6	06200209	5	BLT, RDHDSQSHK MODIFIED .31-18 X .62 YZ
7	06435700	4	WSHR-FL-STL.38X.875X.083 YWZC
8	06529600	4	NUT-LK-CTR .38-16 YWZC
9	06543100	5	NUT, LK-TOP-FLG .312-18 YWZC
10	06800028	2	RVT-POP .187x.250 (#64) YWZC
11	52005300	1	HOUSING, BLOWER - 28" WITH DECAL

# HOUSING – 22"

Model 920315

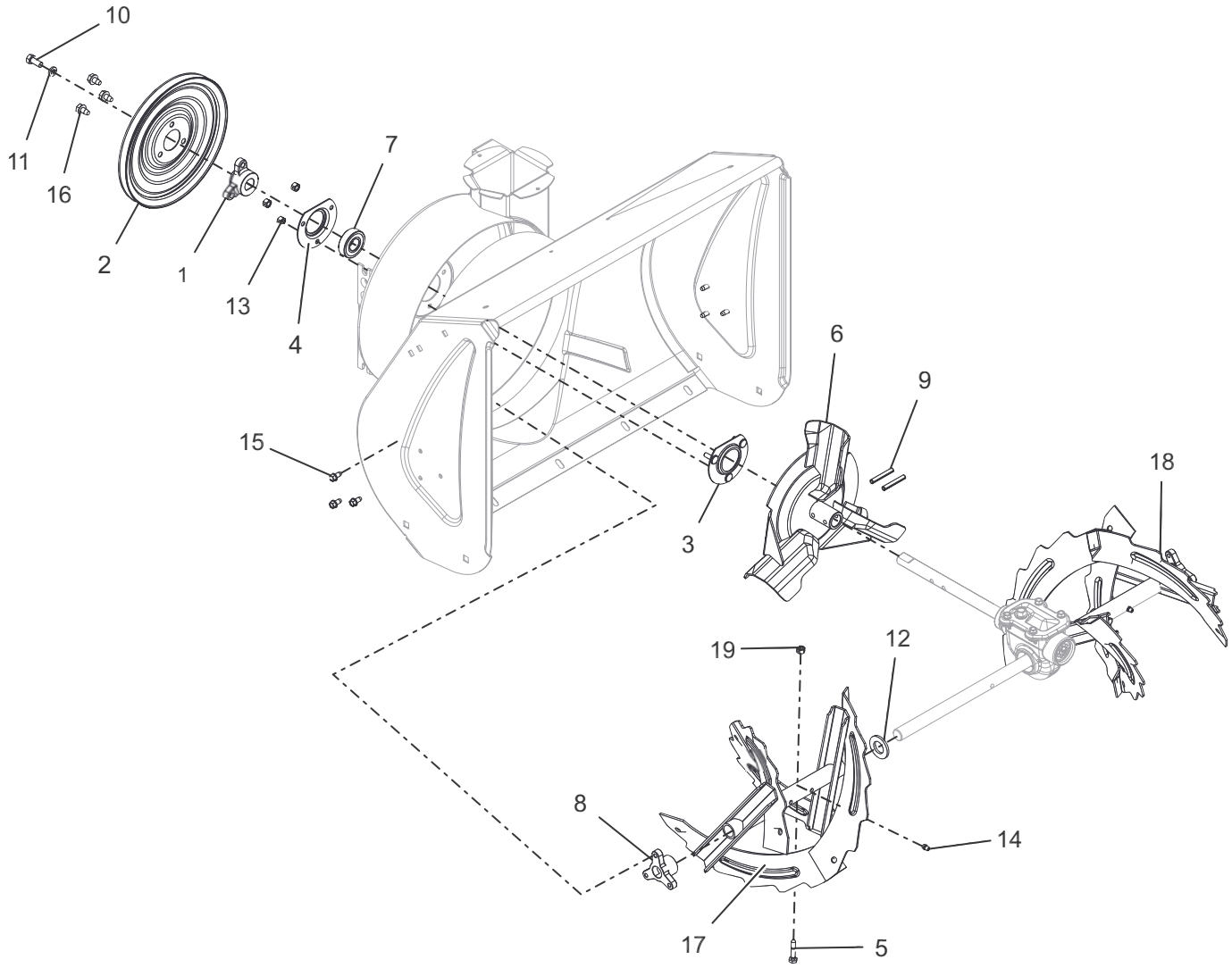


BOM ID	Number	Qty	Description
1	00170200	1	DEVICE,SNOW CLEAN OUT
2	00170300	1	MOUNT, SNOW CLEAN OUT
3	03884351	1	BLADE, SCR -22" COMPACT
4	04431751	2	SKID, SHOE REVERSIBLE
5	06200004	4	BLT-RHDSSQNK .38-16X.75 G5YZ
6	06200209	5	BLT, RDHDSQSHK MODIFIED .31-18 X .62 YZ
7	06435700	4	WSHR-FL-STL.38X.875X.083 YWZC
8	06529600	4	NUT-LK-CTR .38-16 YWZC
9	06543100	5	NUT, LK-TOP-FLG .312-18 YWZC
10	06800028	2	RVT-POP .187x.250 (#64) YWZC
11	52005400	1	HOUSING, BLOWER - 22" WITH DECAL



# AUGER – 24"

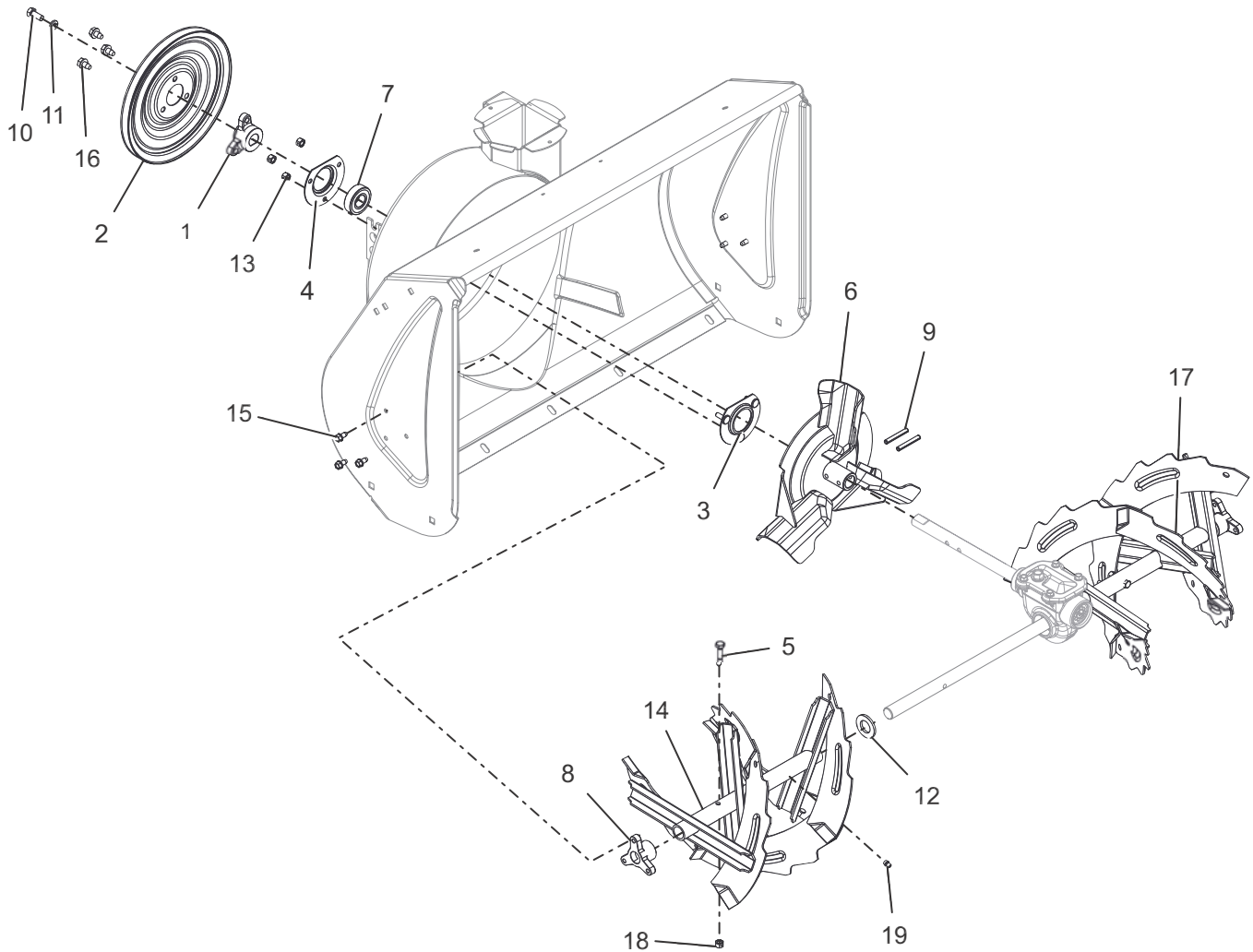
Models 920402, 313



BOM ID	Number	Qty	Description
1	00268901	1	PULLEY, HUB BOLT-ON
2	00268900	1	PULLEY, SPIN FORM SINGLE GROOVE
3	00428700	1	FLANGE, BEARING
4	01014200	1	FLANGE, BEARING
5	03204300	2	SHEAR, BLT
6	03835551	1	IMPELLER, COMPACT 12" 3-BLADE
7	05406300	1	BRG-BALL .750X1.750X.50
8	05500918	2	BSHG, RAKE SHAFT .75"
9	05803700	2	PIN-ROLL .250X1.75
10	05947300	1	BLT-HEX .31-24X.75 GR5 YWZC
11	06307400	1	WSHR-LK .31X.097 HVY YWZC
12	06439000	2	WSHR-FL-STL.812X1.50X.135YWZC
13	06529700	3	NUT-LK-CTR .25-20 YWZC
14	07061300	2	ZERK, FITTING .25X.125 DRIVE IN
15	07400034	6	SCR-TAP .25-20X.50 HWH TR YWZ
16	07411500	3	SCR-TAP .31-18X.50 HWH TR YWZ
17	00263251	1	WLDMT, 24" RAKE - RH
18	00263151	1	WLDMT, 24" RAKE - LH
19	06529700	2	NUT-LK-CTR .25-20 YWZC

# AUGER – 28"

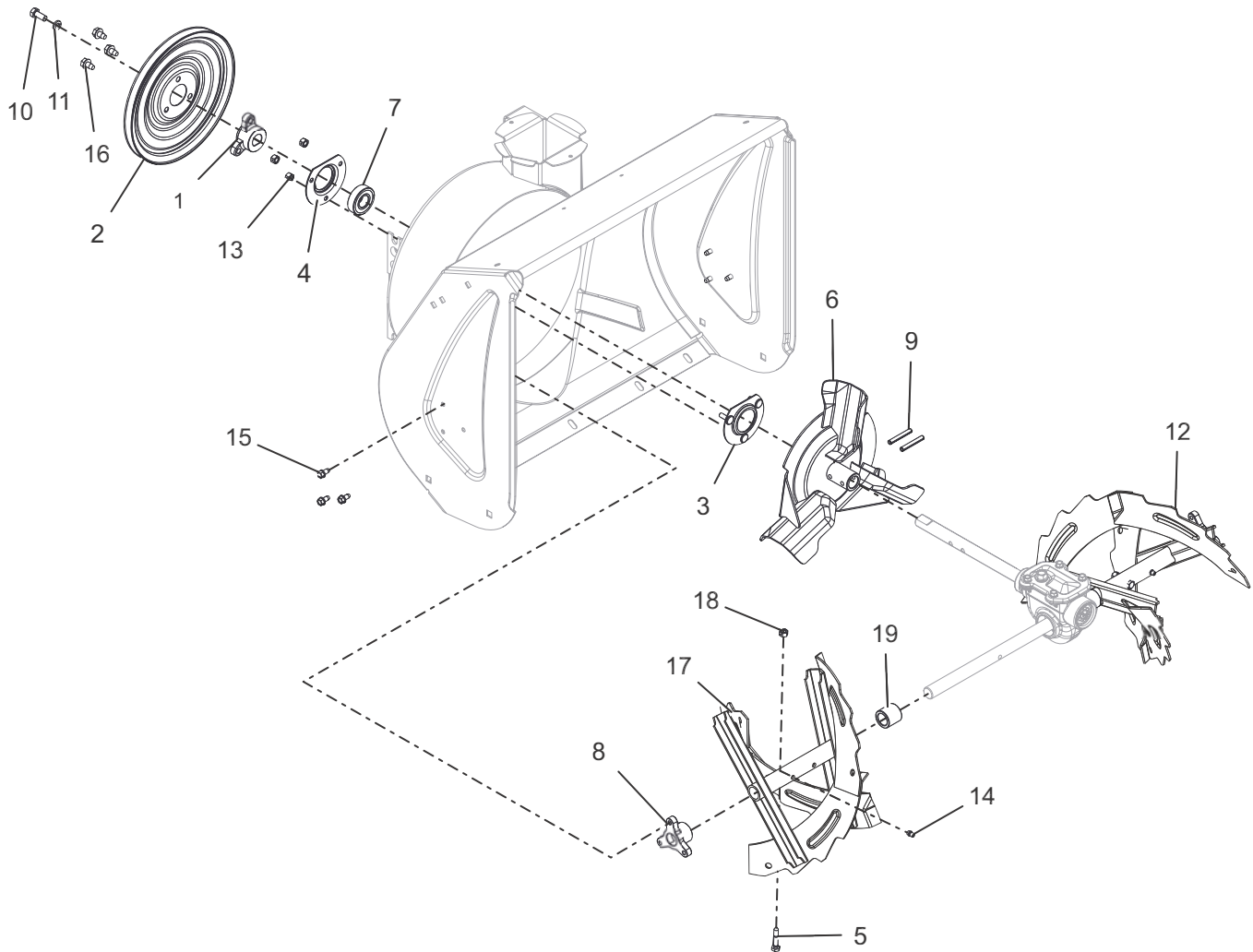
Model 920314



BOM ID	Number	Qty	Description
1	00268901	1	PULLEY, HUB BOLT-ON
2	00268900	1	PULLEY, SPIN FORM SINGLE GROOVE
3	00428700	1	FLANGE, BEARING
4	01014200	1	FLANGE, BEARING
5	03204300	2	SHEAR, BLT
6	03835551	1	IMPELLER, COMPACT 12" 3-BLADE
7	05406300	1	BRG-BALL .750X1.750X.50
8	05500918	2	BSHG, RAKE SHAFT .75"
9	05803700	2	PIN-ROLL .250X1.75
10	05947300	1	BLT-HEX .31-24X.75 GR5 YWZC
11	06307400	1	WSHR-LK .31X.097 HVY YWZC
12	06439000	2	WSHR-FL-STL.812X1.50X.135YWZC
13	06529700	3	NUT-LK-CTR .25-20 YWZC
14	04099051	1	RAKE, RIGHT HAND -28" COMPACT
15	07400034	6	SCR-TAP .25-20X.50 HWH TR YWZ
16	07411500	3	SCR-TAP .31-18X.50 HWH TR YWZ
17	04098951	1	RAKE, LEFT HAND-28" COMPACT
18	06529700	2	NUT-LK-CTR .25-20 YWZC
19	07061300	2	ZERK, FITTING .25X.125 DRIVE IN

# AUGER – 22"

Model 920315



BOM ID	Number	Qty	Description
1	00268901	1	PULLEY, HUB BOLT-ON
2	00268900	1	PULLEY, SPIN FORM SINGLE GROOVE
3	00428700	1	FLANGE, BEARING
4	01014200	1	FLANGE, BEARING
5	03204300	2	SHEAR, BLT
6	03835551	1	IMPELLER, COMPACT 12" 3-BLADE
7	05406300	1	BRG-BALL .750X1.750X.50
8	05500918	2	BSHG, RAKE SHAFT .75"
9	05803700	2	PIN-ROLL .250X1.75
10	05947300	1	BLT-HEX .31-24X.75 GR5 YWZC
11	06307400	1	WSHR-LK .31X.097 HVY YWZC
12	53212400	1	RAKE, LH 20" - SERVICE W/ ZERK
13	06529700	3	NUT-LK-CTR .25-20 YWZC
14	07061300	2	ZERK, FITTING .25X.125 DRIVE IN
15	07400034	6	SCR-TAP .25-20X.50 HWH TR YWZ
16	07411500	3	SCR-TAP .31-18X.50 HWH TR YWZ
17	53212300	1	RAKE, RH 20" - SERVICE W/ ZERK
18	06529700	2	NUT-LK-CTR .25-20 YWZC
19	05500917	2	BSHG, SLV .75 X 1.12 X 1.062 X NYL BK

## NOTES

---



Ariens Company  
655 West Ryan Street  
Brillion, WI 54110

**[ariensstore.com](http://ariensstore.com)**  
(Dealer Locator)

**[ariens.custhelp.com](http://ariens.custhelp.com)**  
(Customer Support)



 An *Ariens* Company Brand