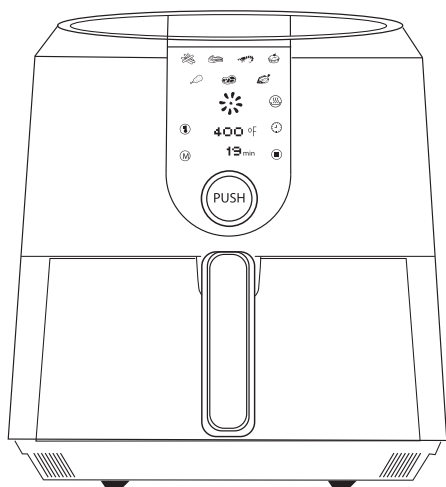




APPLIANCES

INSPIRING THE WORLD'S KITCHEN



## **AIR COOKER (OIL FREE FRYER)**

COS-55AFDKB

INSTALL, USE, CARE GUIDE

### IMPORTANT SAFETY INSTRUCTIONS

Carefully read the following Important information regarding installation safety and maintenance. Keep these instruction for future reference.

**COS-55 AFDKB**

**USER MANUAL**

## THANK YOU FOR YOUR PURCHASE.

Thank you for your purchase. We know that you have many brands and products to choose from and we are honored to know that you have decided to take one of our products into your home and hope that you enjoy it.

COSMO appliances are designed according to the strictest safety and performance standard for the North American market. We follow the most advanced manufacturing philosophy. Each appliance leaves the factory after thorough quality inspection and testing. Our distributors and our service partners are ready to answer any questions you may have regarding how to install, use and care for your products. We hope that this manual will help you learn to use the product in the safest and most effective manner .

If you have any questions or concerns, please contact the dealer from whom you purchased it, or contact our Customer Support at:

**1-888-784-3108.**

Please read the important safety instructions before using the Air Fryer for your own safety and to reduce the risk of fire or electrical shock, etc.

Please keep this manual for future use.

THANK YOU

## IMPORTANT SAFETY INSTRUCTIONS

BEFORE YOU BEGIN:

Please Read all instructions completely and carefully.  
Save these instructions for future references.



**CAUTION**

**IMPORTANT:** NEVER FILL THE POT WITH OIL, OR IT MAY CAUSE A FIRE HAZARD. This item is designed to cook using AIR.

The appliance contains electronic and heating elements. Do not put it in water or wash with direct water.

Use CAUTION when operating this Air Fryer, it will be HOT. Only open with the handle and use extreme care when moving the unit while in operation or after cooking. Use only insulated Pot Holder gloves to pick up the unit if needed.

Do not cover the air intake or outlet during operation. Do not touch the inside of the appliance to avoid burns and scalding. keep all ingredients in the basket.

High temperature air will flow from the outlet while the appliance is in use. Please keep a safe distance.

When pulling out the Fry Pot, please be careful of high temperature air. Use only the prescribed method of operation to avoid injury. Please read the section on removing and replacing the Fry Pot to be safe.



**WARNING**

**FOR YOUR SAFETY:**

If the information in this manual is not followed exactly, a fire, burn, electric shock or short circuit may result, causing property damage, personal injury or death.

**Do not store or use gasoline or other flammable vapors and liquids in the vicinity of this or any other appliance.**

**FOR YOUR SAFETY:**

Please keep the plug clean to avoid injury.

Do not damage, strongly pull or twist the power cord, use it to carry heavy loads, or alter it in any way.

Do not let cord hang over edge of table or counter, or touch hot surfaces, to avoid electric shock, fire and other accidents. Damaged power cord must be repaired by a trained technician or electrician.

Please do not plug and unplug with wet hands, otherwise it may cause electric shock.

Plug tightly, otherwise, it may cause electric shock, short circuit, smoking, sparking and other dangers.



## WARNING

### **Read this instruction booklet before installing and using the appliance.**

- Do not immerse the appliance, body, cord or plug in water or other liquid, to protect against electrical shock and damaging the unit.
- Do not allow children to play with the socket and plug to avoid electric shock.
- Do not place the appliance in the presence of explosive and /or flammable fumes.
- Do not place the appliance on or near the flammable material, such as tablecloths, curtains and others, to avoid fire hazard.
- Be sure to use on a heat resistant and even surface, keep the appliance at least 10 inches away the wall, furniture or other flammables.
- Do not use the appliance for other than intended use. Physical or mental disability persons or those lack in knowledge of this item must be guided by persons who have experience with this appliance and who will be responsible for their safety.
- Keep the appliance away from children to avoid scalding, electric shock and/or other injuries. Close supervision is necessary when the appliance is used by or near children.
- This appliance is intended for Household Use Only.
- **Before beginning installation, please read these instructions completely and carefully.**
- Do not remove permanently affixed labels, warnings, or plates from the product. This may void the warranty. Please observe all local and national codes and ordinances.

## CAUTION

**When moving the airfryer, make sure that you hold it securely and support the base—do not rely on the food basket handle when moving the fryer!**

## TABLE OF CONTENTS

SAFETY INSTRUCTIONS	3
PRODUCT DIAGRAMS	6
KEY FEATURES	8
BEFORE FIRST USE	9
OPERATING INSTRUCTIONS	10
CARE & MAINTENANCE	12
TROUBLESHOOTING	13



## PRODUCT DIAGRAM

(Figure 1)

1. Fry basket
2. Protective cover
3. Push-release button
4. Handle bar
5. Fry pot
6. Air inlet
7. Upper housing
8. Control panel
9. Push button

(Figure 2)

10. Air outlet
11. Power cable
12. Temperature button
13. Menu button
14. Keep warm button
15. Timer button
16. Clear all / Stop button

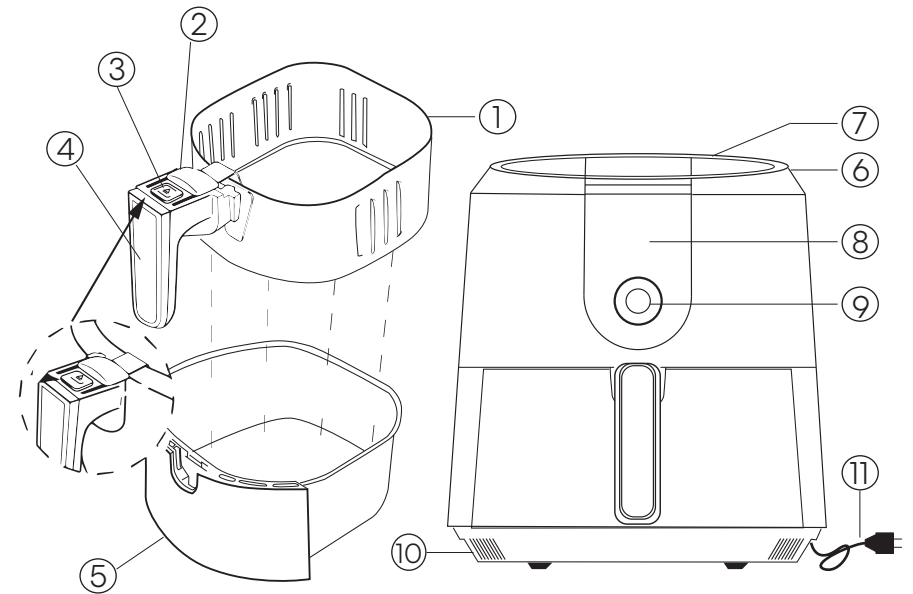


12      13      14      15      16

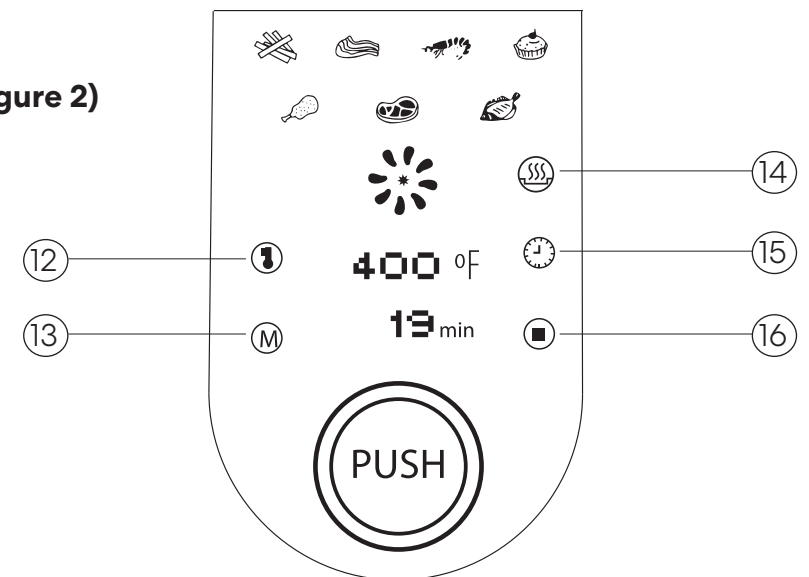
### TECHNICAL SPECIFICATIONS:

- Rated Voltage: 110 / 120 V
- Rated frequency: 50Hz/60Hz
- Rated power: 1800W
- Fry basket capacity: 5.2L
- Net weight: 12.12lbs
- Product Size: 12.24 x 14.61 x 15.19 inch

(Figure 1)



(Figure 2)



## COSMO AIR FRYER QUICK FACTS

With the combination of High Speed Air circulation and heat, you can be excited to prepare your favorite foods and snacks in a quick, healthy, and easy way with your new Cosmo Air Fryer! This Smart Air Fryer houses a top grill to cook your ingredients from all sides simultaneously. It also allows you to prepare a variety of tasty dishes without the addition of excess oils or fats to most ingredients.

### **Some key features:**

- Easy touch-sensitive control panel with 7 preset menus including (Fries, Ribs, Shrimp, Pastries, Chicken, Meat & Fish).
- Digital timer and temperature adjustments with knob control.
- A temperature control range of 180°F – 400°F
- Adjustable timer range from 0 to 60 minutes, and a convenient auto shut-off feature.
- Fast cooking, with little to no preheating required.
- Quick and easy clean-up: the non-stick coated parts are conveniently sized to fit in the dishwasher.
- Hassle-free frying—no splatters, no mess, and no oil smell!
- Versatility—with its frying, baking, grilling, and roasting capabilities, this unit serves as a great cooking tool for a busy kitchen.
- No assembly required—very easy and safe to use!
- Also features a mini rack and baking/ drip pan to maximize the cooking capability and versatility of your fryer.
- Keep food warm for 2 hours with the touch of a button.

## BEFORE THE FIRST USE

- Unpack the appliance and its accessories (fry basket, basket pot).
- Remove any packaging or labels from the appliance.
- Wash the accessories in hot, soapy water and then wipe them dry. Wipe the interior of the frying cavity with a damp cloth or sponge, and then dry with a paper towel. **Make sure the cavity is dry before operating the unit.**
- Wipe the inside and outside of the appliance with a moist cloth.
- Place the appliance on a stable, horizontal and level heat-resistant surface at least 6 inches away from surrounding objects.
- Place the appliance in an area with good air circulation and away from hot surfaces and any combustible materials.
- Place the basket in the pan properly until it clicks into place. Slide the pan back into the appliance.
- Insert the power plug into a wall socket. Your Air Fryer is now ready for use!



**THIS APPLIANCE WORKS ON HOT AIR. DO NOT FILL THE PAN WITH OIL OR FRYING FAT.**

DO NOT PUT ANYTHING ON TOP OF THE APPLIANCE. THIS DISRUPTS THE AIRFLOW AND AFFECTS THE HOT AIR FRYING OPERATION. DO NOT ATTEMPT TO OPEN THE UNIT FROM THE TOP, THIS IS THE FAN AND HEATING COIL HOUSING AND DOES NOT OPEN.


# OPERATING INSTRUCTIONS

## USING THE UNIT

### PRE-HEATING

It is recommended to let the airfryer heat for about 5 minutes without any food in it. This helps to eliminate grease that may have adhered during manufacturing, and to eliminate the “new” appliance smell. (Adjust pre heat time if it still has smell) Ventilate the room during this period.

When your airfryer is heated for the first time, it may emit slight smoke or odor. This is normal with many heating appliances. This does not affect the safety of your appliance.

- Press the “PUSH” button,
- then press  button and rotate the knob to the left, lowering the time to 5 minutes.
- Press the “push” button to start the preheating.

When the time goes to zero (0), carefully pull the fry pot out of the appliance, remove basket and place the ingredients inside to cook (**attention: do not fill the basket past maximum line**). re-insert the fry basket into fry pot, slide the pan back into the appliance.

### COOKING

The smart fryer can be used to prepare a large variety of foods. Please refer to the table in the “settings” section for basic Cooking times, or refer to the included recipe book.

### PRESET OPERATION

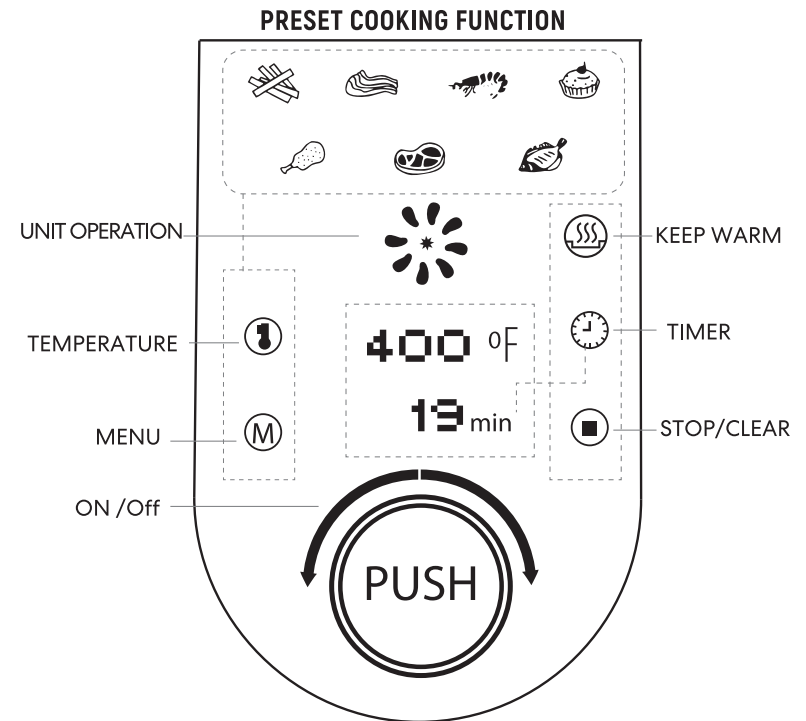
A) Press the Menu button and use the knob to scroll through the Preset Cooking Temperatures and Times:

						
Fries	Ribs	Shrimp	Cake	Drumstick	Meat	Fish
390°/20 min	360°/15 min	320°/20 min	320°/40 min	360°/25 min	320°/20 min	360°/20 min


- B) Press the PUSH button to start cooking.  
 C) Press the Warming button to keep food warm for up to 120 minutes.

## MANUAL OPERATION

- A) Press the Temperature / Timer button and use the knob to manually adjust the cooking temperature/time.  
 B) Press the PUSH button to start cooking.

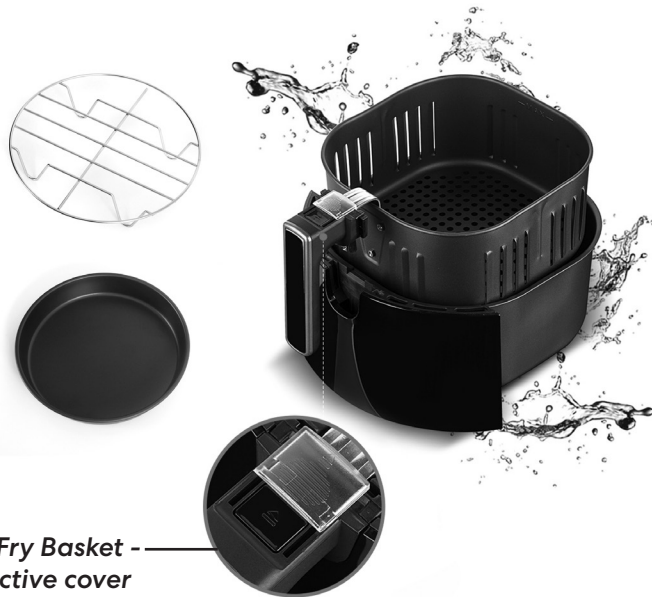


### KEEP WARM

Once your meal is ready you can keep your food warm and fresh up to 120 minutes by using the "Keep Warm" feature. Press the  then Press the PUSH button to start.



## CARE & MAINTENANCE

- Before cleaning, turn the timer to 0, unplug your Cosmo Air Fryer and wait for it to cool down. Don't touch the surface before cooling.
- **Never immerse the device in water or any other liquid. The full device is not dishwasher safe.** (The pan, rack, basket and basket holder can be cleaned in hot water with mild detergent / dish soap, or in the dishwasher.)
- Clean the surface of the fryer pot and basket with hot soapy water and a non-abrasive sponge.
- If dirt is stuck to the basket or the bottom of the pan, fill the pan with hot soapy water. Put the basket in the pan and let the pan and basket soak for about 10 minutes.
- Use a damp cloth to wipe the surface of the fryer.
- Never use harsh and abrasive cleaners, scouring pad or steel wool, which damages the device.
- If you do not use the appliance for a long time, please clean it, and store it in a cool and dry place.



To Remove Fry Basket -  
Move protective cover  
Press Button and Lift

## TROUBLESHOOTING

PROBLEM	POSSIBLE CAUSE	SOLUTION
No Power Not Working	<ul style="list-style-type: none"> <li>● Power cord not inserted securely or properly into socket</li> <li>● Did not choose a cooking time or temperature</li> <li>● Did not turn the unit ON by pressing PUSH to begin the cook cycle</li> <li>● The basket holder is not locked into place</li> </ul>	<ul style="list-style-type: none"> <li>● Closely insert the power cord into the grounded power socket.</li> <li>● Adjust the temperature &amp; time using the symbols and knob to adjust (+/-), Press PUSH to begin cooking.</li> <li>● (alternatively) Press M for the menu and select a Preset cooking time/temp, Press PUSH to begin cooking.</li> </ul>
Food Undercooked	<ul style="list-style-type: none"> <li>● Too much food in the basket</li> <li>● Temperature is set too low</li> <li>● Cooking time was too short</li> </ul>	<ul style="list-style-type: none"> <li>● Lower the food portions</li> <li>● Adjust the temperature using the Temperature symbol and knob to adjust (+) </li> <li>● Adjust the time using the Time symbol and knob to adjust (+) </li> </ul>
Uneven Frying	<ul style="list-style-type: none"> <li>● Certain foods need to be Shaken during cook cycle</li> </ul>	<ul style="list-style-type: none"> <li>● During cooking, open fry pot and shake the basket with the handle to evenly distribute the food.</li> </ul>
Fried Food is not Crispy	<ul style="list-style-type: none"> <li>● Certain foods need to be cooked with some oil</li> </ul>	<ul style="list-style-type: none"> <li>● Brush a small amount of oil on the surface of the food then Fry</li> </ul>
Trouble getting Fry Pot to lock in place	<ul style="list-style-type: none"> <li>● Basket is too full or heavy</li> <li>● Basket not locked in place</li> <li>● Handle is stuck</li> </ul>	<ul style="list-style-type: none"> <li>● Do not fill basket over Max line</li> <li>● Lock basket in place &amp; move clear cover over push button</li> <li>● Hold handle horizontal</li> </ul>
Smoking	<ul style="list-style-type: none"> <li>● Fryer has oil residue</li> <li>● Frying oily food</li> </ul>	<ul style="list-style-type: none"> <li>● Keep pot and basket clean after each use</li> <li>● Natural phenomenon</li> </ul>



## APPLIANCES

### WARRANTY AND SERVICE

For full warranty details on this product please visit:  
<http://www.cosmoappliances.com/warranty>

TO RECEIVE WARRANTY SERVICE, YOUR  
PRODUCT MUST BE REGISTERED. TO REGISTER, VISIT:

**WWW.COSMOAPPLIANCES.COM/WARRANTY**



### IMPORTANT

Do Not Return This Product To The Store If  
you have a problem with this product, please contact

Cosmo Customer Support at

**+1(888)784-3108**

DATED PROOF OF PURCHASE, MODEL #, AND SERIAL #  
REQUIRED FOR WARRANTY SERVICE

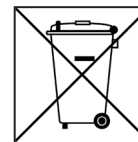
### IMPORTANT

Ne pas Réexpédier ce Produit au Magasin  
Pour tout problème concernant ce produit, veuillez contacter  
le service des consommateurs Cosmo Customer Support au  
**+1(888) 784-3108**  
UNE PREUVE D'ACHAT DATEE EST REQUISE POUR BENEFICIER DE  
LA GARANTIE.

### IMPORTANTE

No regrese este producto a la tienda  
Si tiene algún problema con este producto, por favor contacte el  
AYUDA AL CLIENTE COSMO al  
**+1(888)784-3108**  
(Válido solo en E.U.A).  
NECESITA UNA PRUEBA DE DE COMPRA FECHADA, NÚMERO DE  
MODELO Y DE SERIE PARA EL SERVICIO DE LA GARANTÍA

#### Correct Disposal of this product:



This marking indicates that this appliance should not  
be disposed with other household wastes. To prevent  
possible harm to the environment or human health  
from uncontrolled waste disposal, recycle it responsibly to  
promote the sustainable reuse of material resources.







Cosmo is constantly making efforts to improve the quality and performance of our products, so we may make changes to our appliances without updating this manual.

Electronic version of this manual is available at:  
[www.cosmoappliances.com](http://www.cosmoappliances.com)