

Rolling Door Hardware



Rolling Door

Here is an easy way to order your Rolling Door Hardware



1

Determine what type of *Roller Straps* you will need.

Roller Straps (Fasteners & Roller included).



Spade
10.5" H
x
3" W



Black



Oil Rubbed
Bronze

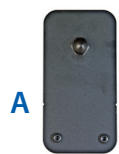


Fleur-de-Lis
11.75" H
x
3.25" W

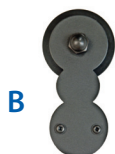
1A

Hand Forged Traditional Style Spade & Fleur-de-Lis are hand forged, hammered finish, custom made

Part#	Style	Color	Each
QG.1104.07	Spade	Bronze	\$89.99
QG.1104.08	Spade	Black	79.99
QG.1204.07	Fleur-de-Lis	Bronze	89.99
QG.1204.08	Fleur-de-Lis	Black	79.99



A
Basic Rectangle
2.62" W x 5" H



B
Circles
2" W x 4.86" H



C
Castle 2
3" W x 6.5" H



D
Cube Stick
2.9" W x 6.8" H



E
Horseshoe
4.12" W x 6.17" H



F
Notched Rectangle
3" W x 6" H



G
Round Stick
2.75" W x 6.67" H



H
Triangle
5.36" W x 4.93" H



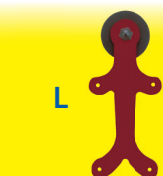
I
Vista
2.5" W x 6.25" H



J
Palm-Leis
2.625" W x 8.625" H



K
Double Horse
4.625" W x 8.625" H



L
GingerBread
3.625" W x 8.25" H



M
Wright
2.25" W x 7.625" H



N
Ice Cream Cone
4.875" W x 8.625" H



O
Kaminski Wolf
4.875" W x 8.625" H



P
Top Mount
4.5" W x 3.5" H



Q
Tri-Star
4.5" W x 5.5" H

1B Contemporary Roller Straps

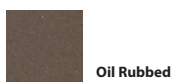
	Part#	Color
A	QG.1304.BR.02	Satin Nickel
	QG.1304.BR.07	Oil Rubbed Bronze
	QG.1304.BR.08	Black
B	QG.1304.C.02	Satin Nickel
	QG.1304.C.07	Oil Rubbed Bronze
C	QG.1304.C.08	Black
	QG.1304.C2.02	Satin Nickel
	QG.1304.C2.07	Oil Rubbed Bronze
D	QG.1304.C2.08	Black
	QG.1304.CS.02	Satin Nickel
	QG.1304.CS.07	Oil Rubbed Bronze
E	QG.1304.CS.08	Black
	QG.1304.HS.02	Satin Nickel
	QG.1304.HS.07	Oil Rubbed Bronze
F	QG.1304.HS.08	Black
	QG.1304.NR.02	Satin Nickel
	QG.1304.NR.07	Oil Rubbed Bronze
	QG.1304.NR.08	Black

	Part#	Color
G	QG.1304.RS.02	Satin Nickel
	QG.1304.RS.07	Oil Rubbed Bronze
	QG.1304.RS.08	Black
H	QG.1304.T.02	Satin Nickel
	QG.1304.T.07	Oil Rubbed Bronze
	QG.1304.T.08	Black
I	QG.1304.V.02	Satin Nickel
	QG.1304.V.07	Oil Rubbed Bronze
	QG.1304.V.08	Black
J	QG.1304.PL.02	Satin Nickel
	QG.1304.PL.07	Oil Rubbed Bronze
	QG.1304.PL.11	Barn Red
K	QG.1304.PL.08	Black
	QG.1304.DH.02	Satin Nickel
	QG.1304.DH.07	Oil Rubbed Bronze
	QG.1304.DH.08	Black

	Part#	Color
L	QG.1304.GB.02	Satin Nickel
	QG.1304.GB.07	Oil Rubbed Bronze
	QG.1304.GB.11	Barn Red
M	QG.1304.GB.08	Black
	QG.1304.WR.02	Satin Nickel
	QG.1304.WR.07	Oil Rubbed Bronze
N	QG.1304.WR.11	Barn Red
	QG.1304.WR.08	Black
	QG.1304.IC.02	Satin Nickel
O	QG.1304.IC.07	Oil Rubbed Bronze
	QG.1304.IC.11	Barn Red
	QG.1304.IC.08	Black
P	QG.1304.NK.02	Satin Nickel
	QG.1304.NK.07	Oil Rubbed Bronze
	QG.1304.NK.08	Black
Q	QG.1304.TM.02	Satin Nickel
	QG.1304.TM.07	Oil Rubbed Bronze
	QG.1304.TM.08	Black
	QG.1304.TS.02	Satin Nickel
	QG.1304.TS.07	Oil Rubbed Bronze
	QG.1304.TS.08	Black



Satin Nickel



Oil Rubbed
Bronze



Barn Red



Black

Barn Door



2 Select Center Guide & Stops

2A Adjustable Center Guide

Spade & Fleur-de-Lis are hand forged, hammered finish, custom made hardware.

Guide can be adjusted to accommodate various door widths.



Part#	Description	Color
QG.1101.07	Spade	Oil Rubbed Bronze
QG.1101.08	Spade	Black
QG.1201.07	Fleur-de-Lis	Oil Rubbed Bronze
QG.1201.08	Fleur-de-Lis	Black
QG.1301.DG.02	Dome Guides	Satin Nickel
QG.1301.DG.08	Dome Guides	Black
QG.1301.DG.07	Dome Guides	Oil Rubbed Bronze

Roller Center Guide

Use this rolling guide for doors with rough surfaces, such as reclaimed barn wood or rustic finishes. Constructed of heavy duty black Delron polymer and includes mounting bolt.

Part#	Description	Each
QG.1000.08	Rolling Center Guide	



2B Door Stops

Door stops with black rubber bumpers prevent damage to your door. Sold as each. Screws included.

Spade & Fleur-de-Lis are hand forged, hammered finish, custom made hardware.



QG.1103.08
2-7/8" H x 1-3/4" W

QG.1203.08
2-7/8" H x 2-1/2" W



QG.1305.DS.08
2-1/4" H x 1-3/8" W



Part#	Description	Color
QG.1102.07	Left Stop, Spade	Oil Rubbed Bronze
QG.1102.08	Left Stop, Spade	Black
QG.1103.07	Right Stop, Spade	Oil Rubbed Bronze
QG.1103.08	Right Stop, Spade	Black
QG.1202.07	Left Stop, Fleur-de-Lis	Oil Rubbed Bronze
QG.1202.08	Left Stop, Fleur-de-Lis	Black
QG.1203.07	Right Stop, Fleur-de-Lis	Oil Rubbed Bronze
QG.1203.08	Right Stop, Fleur-de-Lis	Black
QG.1305.DS.02	Dome Stop (non-handed)	Satin Nickel
QG.1305.DS.07	Dome Stop (non-handed)	ORB
QG.1305.DS.08	Dome Stop (non-handed)	Black

Universal Guide/Stop (non-handed)



Part#	Description	Color
QG.1306.01.02	1-7/8"	Satin Nickel
QG.1306.01.07	1-7/8"	Oil Rubbed Bronze
QG.1306.01.08	1-7/8"	Black
Used with Short Bracket		
QG.1306.02.02	2-1/2"	Satin Nickel
QG.1306.02.07	2-1/2"	Oil Rubbed Bronze
QG.1306.02.08	2-1/2"	Black

Used with Long Bracket

3 Select Rail

Rails

Separate rail lengths to build custom length doors, combine any of the lengths of rail sold here using the splice kit sold below.



Part#	Rail	Color
QG.4004.02	4'	Satin Nickel
QG.4004.07	4'	Oil Rubbed Bronze
QG.4004.08	4'	Black
QG.4006.02	6'	Satin Nickel
QG.4006.07	6'	Oil Rubbed Bronze
QG.4006.08	6'	Black
QG.4008.02	8'	Satin Nickel
QG.4008.07	8'	Oil Rubbed Bronze
QG.4008.08	8'	Black

Splice kit

QG.41

Splice Kit
For Joining Rails



4 Select Wall Mounting Brackets

Wall Mounting Brackets

Used to mount the rail to the wall. We recommend 16" spacing between brackets. The **short bracket** will accommodate doors up to 1-1/2" thick. The **long bracket** will accommodate doors up to 2-1/4" thick. Sold as each. Choose from short or long bracket size. Screws included.



QG.201.07 (long)



QG.203.08 (short)

Part#	Description	Color
QG.201.02	Vertical	Satin Nickel
QG.201.07	Vertical	Oil Rubbed Bronze
QG.201.08	Vertical	Black
QG.203.02	Short Vertical	Satin Nickel
QG.203.07	Short Vertical	Oil Rubbed Bronze
QG.203.08	Short Vertical	Black

5 Select End Stops



End stop QG.40



End stop QG.401

2 End stops per kit

Part#	Description - End Stop Kit for Rails
QG.40.08	Black
QG.40.07	Oil Rubbed Bronze
QG.40.02	Satin Nickel
QG.401.08	Black
QG.401.07	Oil Rubbed Bronze
QG.401.02	Satin Nickel

Tap to thread rails for end stops

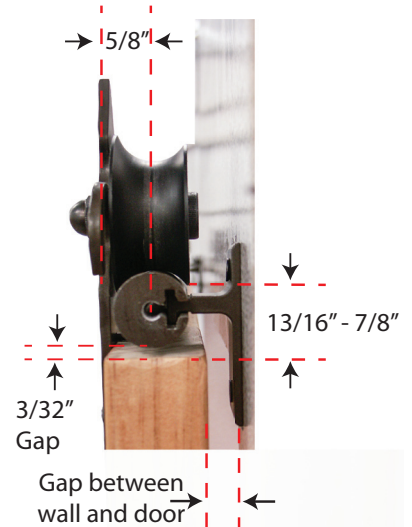
Part#	Description
QG.TAP1420	1/4" x 20 Tap for rail



Rolling Door Instructions

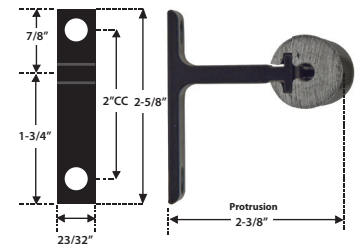
Roller Strap Installation

1. Install the roller straps onto the top edge of the door. The location of these straps is critical for the proper, safe use of the rolling door.
2. The distance between the top of the door and the outer diameter of the back of the wheel (measured from the back of the door) should be $13/16'' - 7/8''$ (this will achieve approximately $3/32''$ gap between the top of the door and the rail when these measurements are achieved).
3. Using the screws provided attach the strap to the door. It is very important that the screws are installed into solid wood, not hollow-core doors with thin veneer skins. It is also recommended that you predrill the screw holes. Make sure that proper vertical alignment of the strap is achieved before fastening the strap to the door.

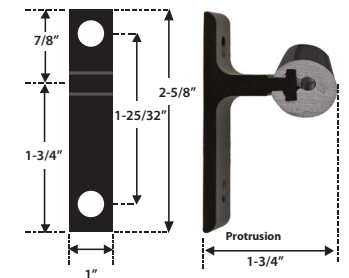


Rail Installation

1. The location of the rail is dependent on the height of the door, desired gap between the floor and bottom of door and desired overlay of top of the door to door opening.
2. Recommended spacing for the wall mounted brackets is 16"
3. The **Short Bracket** will accommodate doors up to 1-1/2" thick, the **Long Bracket** will accommodate doors up to 2-1/4" thick.
4. Wall brackets must be mounted securely into the studs behind the sheetrock. If the brackets are to be mounted to the moulding surrounding the opening, the moulding must be firmly secured to the wall framework.



Long Bracket



Short Bracket

End Stops and Center Guide (floor mounted & wall mounted)

1. After installing the door onto the rail, slide the door to the desired opened position.
2. Install the End Stop bracket to the floor or wall so that the door stops in the desired opened position.
3. Install the Center Guide bracket so that the door will always be captured by this bracket in the fully opened and fully closed position.
4. Repeat step #2 for installation of the other End Stop bracket when the door is in the closed position.

Dimensional Specifications

Gap between the wall and the door

Using the Short Bracket: Door thickness - $1-7/8'' = \text{gap}$

Using the Long Bracket: Door Thickness - $2-1/2'' = \text{gap}$

