

PIPE SUPPORT PRODUCTS

Oatey offers a complete range of pipe support products for all of your application needs. Whether it be securing supply lines, DWV pipe or supporting your work with brackets and bars, you can count on us for quality, performance & innovation.



Copper Plated Milford Hangers

- Hang copper tube piping from joists
- Top set plate swivels and locks into place



Hycos Bar

- Multi-purpose galvanized strap
- 14 gauge in various lengths



Galvanized Adjustable Bracket

- Supports any water supply lines penetrating the wall
- Holes on 2" centers for 1/2" pipe and 4" centers for 3/4" and 1" copper pipe
- Nail in place and solder pipe to copper plated bracket for secure installation



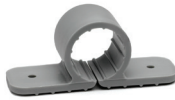
DWV J-Hook

- With pre-loaded nails in stem
- Diagonal nail path for use in tight applications and locking finger for tight hold in inverted applications
- Additional holes allow securing cable ties and other fasteners



Full Clamp Pipe Clamps with Nails (Fits 1/2" to 1" CTS Sizes)

- With pre-loaded nail feature, clamp completely encompasses the pipe
- Made of high impact polypropylene
- Temperature range 0°F to 160°F



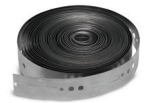
Standard Clamps (Fits 1/2" to 1 1/2" CTS Sizes)

- Design allows pipe to be flush mounted to walls and joists
- Made of high impact polypropylene
- Temperature range 0°F to 160°F



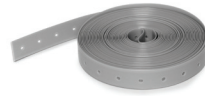
Steel Riser Clamps

- Compatible with multiple pipe materials
- Versatile design makes it easy to work with



Tab Tape

- Self fastening hanger strap
- No nuts or bolts required



Metal & Plastic Hanger Strap

- Quick and inexpensive way to hang pipe from joists or rafters
- Plastic nail holes are 1/8" in diameter and spaced 3/4" apart
- Metal available in 24 & 28 gauge steel



DuoFit[®] pipe support system

- One clamp fits both 1/2" and 3/4" size pipe
- Use on copper, CPVC and PEX
- Temperature range of 0°F to 230°F



Half Clamp with Nail (Fits 1/2" to 1" CTS Sizes)

- Pre-loaded nail feature provides fast and easy installation
- Made of high impact polypropylene
- Temperature range 0°F to 160°F



Insulator & Suspension Clamps (Fits 1/2" to 1 1/2" CTS Sizes)

- Eliminates contact between the pipe & framing surface, reducing water line noise
- Made of high impact polypropylene
- Temperature range 0°F to 160°F



PEX Insulator Support Bracket (Fits 1/2" to 1" Sizes)

- Reduces noise and vibration when running water lines through metal studs
- Uses 1" to 1 1/32" hole diameter with tabs for easy adjustment



Copper & Galvanized Split Ring Tubing Hangers

- Holds a copper tube securely and off the mounting
- Used to secure copper pipes to wooden rafters, walls, joists, etc.



Copper & Steel Pipe Hooks

- Self nailing, supports pipe from rafters or joists



Copper & Galvanized Tube Straps

- Allows pipe to be flush mounted to walls, joists and rafters



Stud Guards & FHA Plates

- Provide protection for pipes & wiring installations
- Made of 16 or 18 gauge steel



Universal Pipe Hangers (Fits 1" to 6")

- Compatible with multiple pipe materials
- Easy to install



CTS J-Hook

- Support copper and CPVC water supply lines from joists and rafters
- Nails flush against a wall or stud



Copper Plated Bell Hangers

- With 13/16" standoff from mounting surface
- Recessed mounting screw has piece point for use on metal studs



Galvanized & Plastic Coated DWV Hangers

- Holds copper tube securely and off the mounting surface
- Versatile design makes it easy to work with



Steel Clevis Hanger

- Rigorously tested and proven to last in many conditions
- Compatible with multiple pipe materials