

## **INSTALLATION INSTRUCTIONS**

1. Before using the refrigerator for the first time, remove all of the packing materials, including the foam base and adhesive tape holding accessories in place.
2. The refrigerator should be located on a firm, flat surface that is strong enough to support the refrigerator when it is fully loaded.
3. Choose a location that is not exposed to direct sunlight, high temperatures, heat sources such as a stove or radiator, or in a moist area. Do not choose a location where the temperature will go below 55°F as this could cause the refrigerator to not function properly.
4. Leave a minimum of ½" between each side of the appliance and the wall. The top and back of the appliance should have a minimum of 1½" clearance. This allows for proper air circulation. This appliance is intended to be free-standing and should not be built-in or placed in a recessed area.
5. The refrigerator legs must be adjusted during installation in order to function properly. The leveling legs on the front corners can be adjusted by turning clockwise to raise the appliance, and counter-clockwise to lower it. Be sure to have the appliance slope slightly backward to ensure that the door closes tightly.

- The defrosting process can take several hours. Open the door to speed up the process.
- When defrosting is completed, wipe the compartment with a soft cloth to remove any remaining water.
- Reset the refrigerator temperature, following the operating instructions on page 4.

**ATTENTION:** Do not use sharp or pointed objects to remove frost or ice from the surfaces of the freezer compartment. This can cause damage to the compartment walls and cooling coils, and will void the warranty.

#### POWER FAILURE

When a power failure occurs, the refrigerator can normally store food for several hours. Do not put additional food into the appliance during a power failure, and do not open door. Disconnect the plug from the outlet, and reconnect when the power has been restored. **Always inspect for, and discard, any spoiled or thawed food in the refrigerator or freezer before resuming use of the appliance.**

#### VACATION

Before leaving on any vacation, remove food that could spoil while you are gone. If you plan to be for an extended period of time, we recommend that all of the food should be removed from the appliance and it should be turned off and unplugged from the outlet. Clean the interior according to the directions provided in the Cleaning section of this manual, and leave the door open.

#### MOVING THE REFRIGERATOR

- Turn off the refrigerator and unplug from the outlet.
- Remove all food and securely tape down all loose items inside.
- Tape the door shut.
- Do not lift or pull the door of door handle during transportation.
- When moving, the appliance can not be tilted over 45 degrees as possible damage to the sealed system could occur.
- Take care to avoid strong vibration or impact to the appliance.

5

#### SPECIFICATIONS

Climate	T	
Electric shock protection type	I	
Capacity (cu.ft)	3.3	
Voltage (VAC)	120	
Frequency (Hz)	60	
Current (A)	0.8	
Voice [dB(A)]	≤42	
Refrigerant	R600a/0.81oz	
Net weight	46.3lbs	
Interior temperature (F)	32~46.4	
Unit dimensions (in inches)	Width	17.60
	Depth	21.02
	Height	35.43

#### TROUBLESHOOTING TIPS

Problem	Possible Cause	What to do
Refrigerator does not operate	·Not plugged in tightly	·Unplug, wait 10 seconds, then plug in again
	·Tripped circuit breaker or blown fuse	·Replace fuse or reset circuit breaker
	·Problem with electrical outlet	·Consult with a professional electrician
Refrigerator seems too warm/food does not seem to cool	·Temperature setting may be too warm	·Lower the temperature setting
	·Door opened too frequently	·This is normal
	·Door not closed tightly	·Check to make sure nothing inside is causing the door to not close
	·Warm weather	·This is normal

6

Problem	Possible Cause	What to do
Compressor runs too long, or cycles on and off frequently	·Hot weather	·This is normal
	·Door opened too frequently	·This is normal
	·Door not closed tightly	·Check to be sure nothing inside the refrigerator is preventing the door from closing
	·Temperature control set at coldest setting	·Adjust temperature to a warmer setting
Moisture forms on the outside of the appliance	·Large amounts of food placed in refrigerator	·This is normal
	·This is normal during periods of high humidity	·Wipe the surface dry using a soft cloth
Moisture forms on the inside of the appliance	·The door is slightly open	·Close the door tightly
	·This is normal during periods of high humidity	·This is normal
Vibration noise	·Door is opened too long or too frequently	·Do not open the door too long or too frequently
	·Refrigerator is on an uneven surface	·Adjust the leveling legs
Vibration noise	·Refrigerator is touching a wall	·Move the refrigerator away from the wall
	·Refrigerator is on an uneven surface	·Adjust the leveling legs

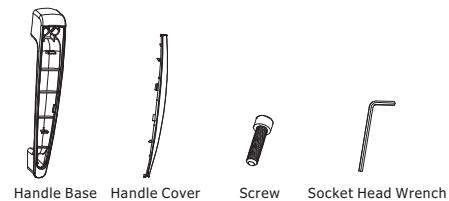
The following are normal conditions that can be encountered during the operation of this appliance:

- The flow of refrigerant through the coils can cause a noise.
- The sides of the appliance may become warm as a result of the cooling function.

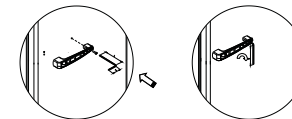
7

#### INSTALL THE HANDLES

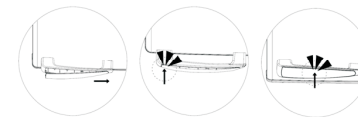
- Take out accessory from packing bags: one handle, one handle cover, and three screws.
- Prepare a cross screwdriver.



- Make sure the three screw holes in the shake hands are aligned with those in the door, and then respectively screw them together. The right side one is suggested to be preferred to be screwed down.



- Install handle cover on the handle. Tips for the Steps to Install: (1) Buckle the handle on the left side first. (2) Buckle the handle on the left side. (3) Buckle the middle part of the handle tightly in the end. And a click can be heard if the handle is properly installed.



8

#### Product Warranty

This warranty applies to products sold by Galanz Americas in the U.S. This warranty is in lieu of any other warranty and expressly applies to the individual product only.

Galanz product is warranted for one year following purchase for defects in material and workmanship. **Please save your receipt as proof of purchase is required to make a warranty claim.** During this period, we will provide the replacement cost of this product, a replacement or the equivalent, or repair per our discretion.

The warranty **cannot be transferred** through resale, including the resale through a 3rd party unauthorized retailer and is only bestowed up on the original consumer purchaser upon purchase from an authorized retailer.

#### This warranty does not cover and excludes damage or defects caused by:

- Consumer misuse
- Abuse
- Neglect including the failure to clean and/or provide adequate regular maintenance as outlined in the user manual
- Commercial use
- Subjecting the product to any voltage outside the specified range
- Loss of parts
- The affixing of any attachments not provided with the product
- Accident, or
- Use in a manner not intended and outlined in the user manual.

Any subsequent damages caused by the above listed exclusions will not be covered and any claims determined to meet the above exclusions will be denied. All liability is limited to the purchase price and does not include any:

- Retail offered extended warranties
- Tax
- Other change (including postage to send required materials)
- Incidental and/or consequential damages associated with the product in question.

9

Every implied warranty, including any statutory warranty of merchantability or fitness for a particular purpose is disclaimed except to the extent prohibited by law, in which case such warranty is limited to the duration of this written warranty. This warranty gives you specific legal rights. You may have other legal rights that vary depending on where you live. Some states do not allow limitations on implied warranties or special, incidental, or consequential damaged, so the above limitations may not apply to you.

If you have a claim under this warranty, please call our Customer Service number: **1-800-562-0738.**

For faster service, please have the **model** number, **serial** number, and **receipt** ready for the operator to assist you.

10