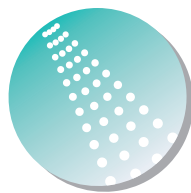


AQUARAIN



PULSE

SHOWERSPAs

AquaRain Shower System

Model #1019-CH & 1019-BN

Owner's Manual

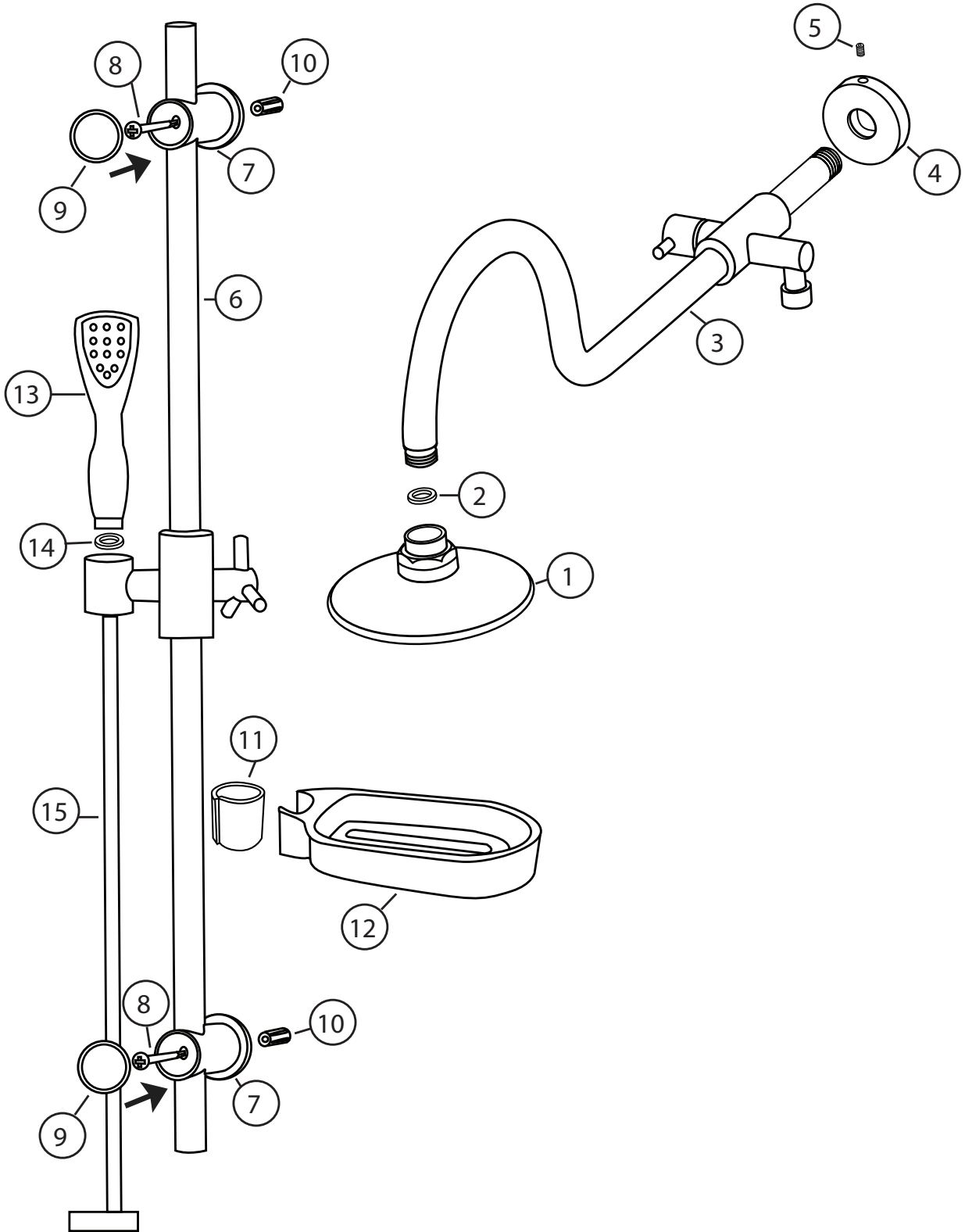


AquaRain Parts Legend

- 1. Shower Head
- 2. Screen Washer
- 3. AquaRain Body
- 4. Escutcheon
- 5. Set Screw

- 6. Slide Bar
- 7. Slide Bar Mounts (2)
- 8. Screw 3.375" (2)
- 9. Mount Covers (2)
- 10. Wall Anchors (2)

- 11. Tapered Nylon Sleeve
- 12. Soap Dish
- 13. Hand Shower
- 14. Rubber Washer
- 15. Hand Shower Hose



Installation Instructions

Thank you for choosing the AquaRain Shower System by PULSE ShowerSpas!

Assembly and installation of the AquaRain Shower System is designed to be quick and easy. If you have installation questions or performance problems, call PULSE Customer Service toll free at 888-785-7320 or visit www.pulshower spas.com.

Please read instructions carefully, become familiar with all parts, installation procedures and tools required. Follow steps in order presented to help avoid mistakes.

FOR NEW CONSTRUCTION OR COMPLETE REMODEL

• A hot/cold mixing valve is required (NOT INCLUDED)

TOOLS REQUIRED

Drill (preferably cordless), (1/4") 6mm masonry/tile drill bit, Phillips screwdriver, pipe wrench.

ASSEMBLY

1. Remove existing shower head and shower arm.
2. Wrap threads of shower pipe with Teflon tape and/or pipe sealant to ensure no leaks. (Diagram A)
3. Slide escutcheon over threaded shower pipe. (Diagram B)
4. Insert threaded pipe into female wall fitting and tighten securely. Use diverter body to tighten by hand or use a pipe wrench on inlet pipe closest to wall. (Diagram C)

CAUTION—DO NOT USE SHOWER ARM TO TIGHTEN

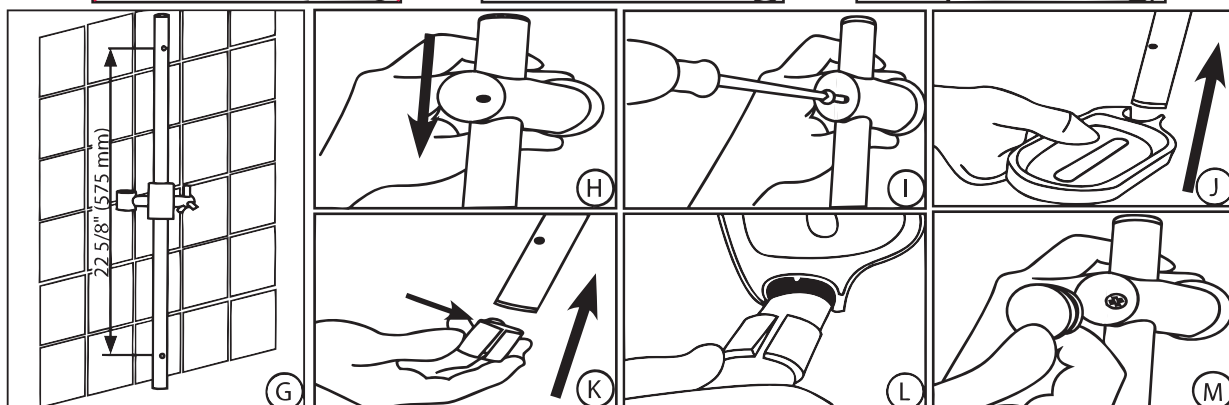
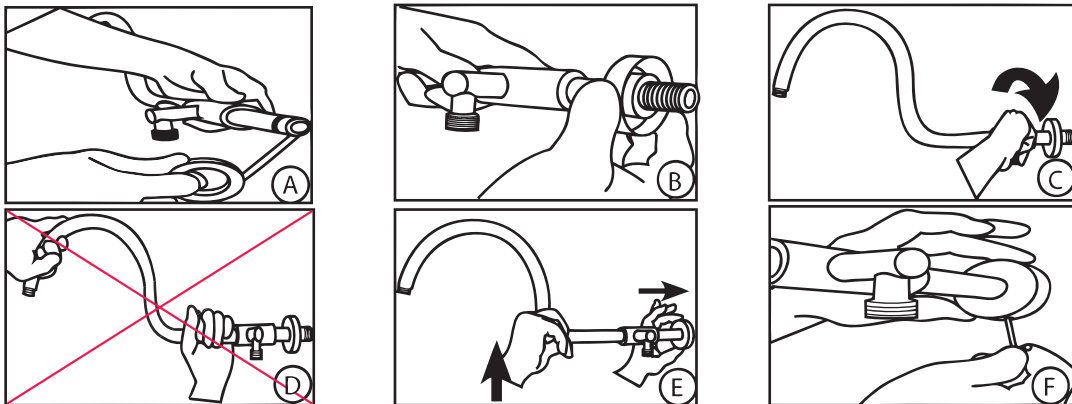
5. While gently pushing up on connection between shower arm and top tee to ensure AquaRain is level, slide escutcheon against wall. (Diagram E) Secure set screw. (Diagram F)

CAUTION—DO NOT OVER-TIGHTEN SET SCREW

6. Insert rubber washer in shower head and secure shower head to shower arm.
7. Hold Adjustable Slide Bar (6) in desired mounting location. Evaluate range of adjustment and potential interference of handshower hose (15) (Diagram G).
8. Mark wall for two mounting holes. Before drilling ensure no live plumbing can be damaged.
9. Slowly drill 1/4" (6mm) wide by 1" (25mm) deep holes 22 5/8 inch (575mm) apart. Make sure holes are plumb.

IMPORTANT: Supplied anchors are for solid surface only i.e. tile, marble etc. If mounting to hollow or fiberglass wall, a different anchor/screw and hole size may be required.

10. Insert wall anchors (10) until flush with wall. Slide top mount (7) over slide bar (Diagram H) and secure with screw (8) (Diagram I). Slide plastic soap dish (12) (Diagram J) onto slide bar followed by narrow end of tapered nylon sleeve (11) (Diagram K). Align tab on soap dish with slot on sleeve and push soap dish down until flush. (Diagram L)
11. Slide lower mount (7) over slide bar and secure screw (8).
12. Press covers (9) into mounts (7) (Diagram M).
13. Place washer (14) in hex head of hose (15) and connect to diverter outlet. Place washer (14) in tapered end of hose and connect handshower (13). Place hand shower into holder.



Usage

Diverter control switches from the shower head and hand shower functionality.

Turn face of hand shower to switch settings.

Adjust the hand shower position by loosening the hand shower hanger and sliding up or down.

Always turn cold water on first to help prevent any accidental burning or scalding; especially for children and elderly.

DO NOT use any part of the AquaRain Shower System as a support device.

Care and Maintenance

To keep your ShowerSpa looking new, wipe down after each use with a soft cotton cloth.

Protect your ShowerSpa from hard water stains and mineral deposits by periodically using an auto spray wax.

Clean using mild liquid soap and a non-abrasive sponge or cloth. Rinse with clean water.

***Do Not Use Any Kind Of
Chemicals Or Abrasives!***

Manufacturer's Limited Warranty

PULSE ShowerSpas, Inc. warrants that all ShowerSpas are free from defect in workmanship and/or materials for a period of three years from the date of purchase. This warranty extends to the original purchaser only and is non-transferable.

This warranty does not cover, and PULSE ShowerSpas will not pay for conditions, malfunctions or damages resulting from (1) normal wear and tear, improper installation (whether performed by a contractor, service company or the consumer), improper maintenance, misuse, abuse, negligence, accident or alteration; (2) the use of abrasive, caustic or "no-rinse" cleaning agents; (3) the use of the product in any manner contrary to the product instruction; (4) conditions in the home such as excessive water pressure or corrosion.

Should any ShowerSpa be determined by PULSE ShowerSpas, Inc. to be defective in normal residential use, at the option of PULSE ShowerSpas, Inc., such product shall either be replaced or repaired and returned to the customer free of defects. The consumer shall give notice of any defects to PULSE ShowerSpas, Inc. within thirty days of discovery of such defect.

Proof of purchase (original sales receipt) must be provided to PULSE ShowerSpas, Inc. with all warranty claims. PULSE ShowerSpas, Inc. is not responsible for labor charges, removal charges, installation or other consequential costs. In no event shall the liability of PULSE ShowerSpas, Inc. exceed the purchase price of the ShowerSpa.

Some states/provinces do not allow limitations of how long an implied warranty lasts or the exclusion or limitation of such damages, so these limitations and exclusions may not apply to you. This warranty gives the consumer specific legal rights. You may also have other rights that vary by state/province.

Follow manufacturers recommended installation. Use caution with children under ten years of age. Do not use your ShowerSpa as a support device. Do not use harsh chemicals or abrasives when cleaning. Always turn water supply off when servicing your ShowerSpa.

PULSE
SHOWERSPAS

PULSE ShowerSpas, Inc. ~ 297 Anna Street ~ Watsonville, CA 95076 ~ 888.785.7320
info@pulseshower spas.com ~ www.pulseshower spas.com ~ support@pulseshower spas.com