

Instruction Sheet

Kit Numbers: 79210300 & 79210500

BLOCK-N-CHUTE KIT

For Models:

79210300 (44, 48 & 52-In. Decks)

991026, 991027, 991028, 991029, 991030, 991032, 991035, 991036, 991037, 991039, 991054, 991058, 991059, 991065, 991066, 992150, 992161, 992163, 992174 and 992176

79210500 (60, 66 & 72-In. Decks)

991038, 991040, 991042, 992152, 992154, 992156, 992159, 992160, 992162, 992164, 992165, 992166, 992167, 992168, 992169, 992170, 992171, 992172, 992173 and 992175



WARNING: FAILURE TO FOLLOW

INSTRUCTIONS could result in personal injury and/or damage to unit.

Read, understand, and follow all safety practices in Owner/Operator Manual before beginning.

TOOLS REQUIRED

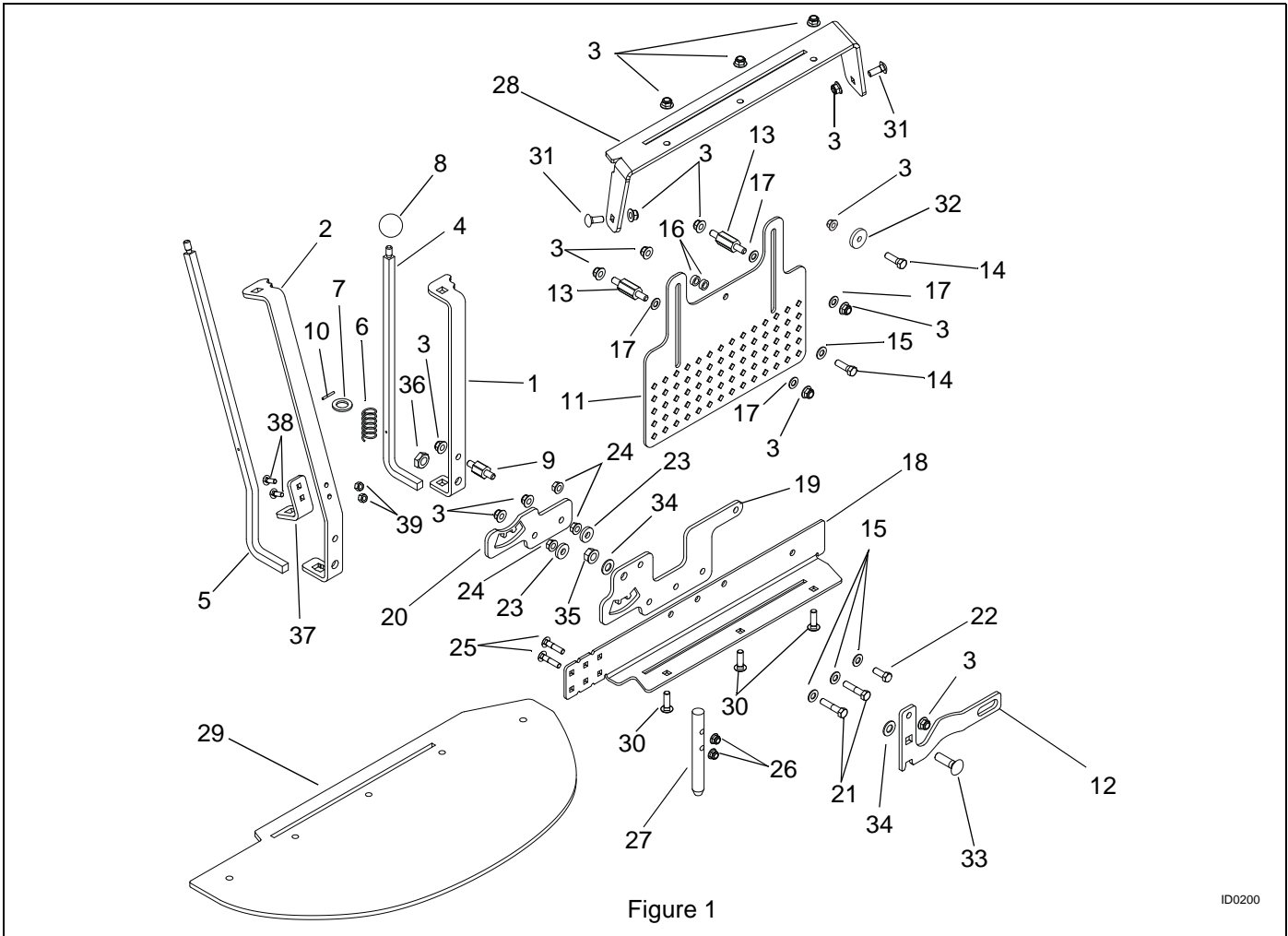
- 1/2, 9/16, 3/4" wrenches/sockets
- 7/16" wrenches/sockets (79210500)

Parts List

The assemblies in the kit include the parts listed below (see Figure 1):

Item	Part No.	Qty.	Description
1	03784600	1	Plate Control Lever (79210300)
2	03784800	1	Plate Control Lever (79210500)
3	06545500	14	3/8-16 Nyloc Flange Nut
4	03784300	1	Plate Control Rod (79210300)
5	03784500	1	Plate Control Rod (79210500)
6	08300500	1	Compression Spring
7	06444200	1	3/4 x 1-1/4 Flat Washer
8	07533500	1	Black Ball Knob
9	03783000	1	Lever Tie Lifter Pin
10	05800900	1	1/8 x 1.00 Roll Pin
11	03783751	1	Block-off Baffle Plate (79210300)
	03783951	1	Block-off Baffle Plate (79210500)
12	03782900	1	Block-off Lifter Cam Bracket
13	03783100	2	Plate Stabilizer Pin

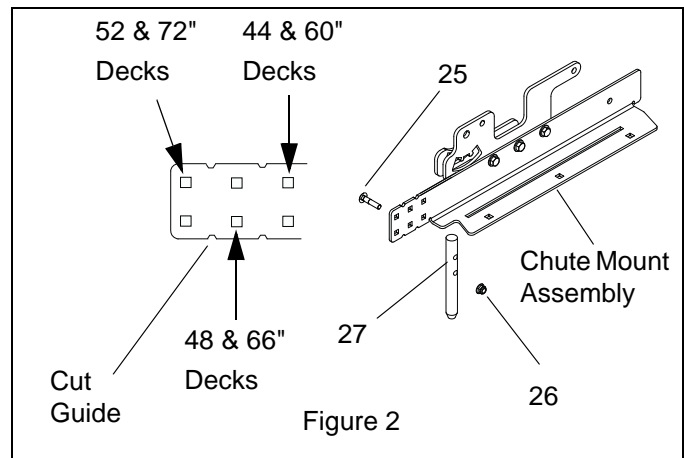
14	05958000	2	3/8-16 x 1-1/4 Hex Bolt
15	06436200	4	3/8 x 13/16 Flat Washer
16	05508900	2	Sleeve Bushing
17	06433600	4	3/8 x 3/4 Nylon Flat Washer
18	03783451	1	Chute Mount Bracket (79210300)
	03783651	1	Chute Mount Bracket (79210500)
19	03782700	1	Chute Control Master Plate
20	03782800	1	Chute Control Backup Plate
21	05958500	2	3/8-16 x 1-3/4 Hex Bolt
22	05948700	1	3/8-16 x 1 Hex Bolt
23	06444000	2	13/32 x 1 Flat Washer
24	06534900	3	3/8-16 Spinlock Flange Nut
25	06212100	2	5/16-18 x 1-1/2 Round Head Square Neck Bolt
26	06545400	2	5/16-18 Nyloc Flange Nut
27	03830600	1	Discharge Chute Pin
28	03784051	1	Chute Support Bracket (79210300)
	03784251	1	Chute Support Bracket (79210500)
29	03820200	1	Rubber Chute (79210300)
	03827200	1	Rubber Chute (79210500)
30	06224100	3	3/8-16 x 1-1/4 Round Head Square Neck Bolt
31	06223600	2	3/8-16 x 1 Round Head Square Neck Bolt
32	06400006	1	3/8 x 1-1/2 Flat Washer
33	06224800	1	1/2-13 x 1-3/4 Round Head Square Neck Bolt
34	06443300	2	1/2 x 1.00 Nylon Flat Washer
35	06543600	1	1/2-13 Locking Top Flange Nut
36	06535100	1	1/2-13 Thin Locking Nyloc Nut
37	03783200	1	Rod Lever Control Support Bracket (79210500)
38	06219900	2	1/4-20 x 3/4 Round Head Square Neck Bolt (79210500)
39	06529700	2	1/4-20 Locking Center Nut (79210500)



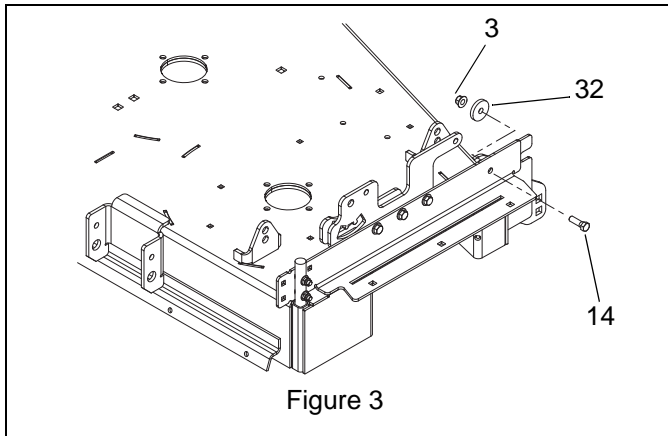
ASSEMBLY

1. Remove existing discharge chute from mower deck. Retain for future use.
2. Determine chute pin mounting location based on deck size and mount chute pin (item 27) to chute mount assembly with two 5/16 x 1-1/2 round head square neck bolts (item 25) and two 5/16" nyloc flange nuts (item 26). See Figure 2.

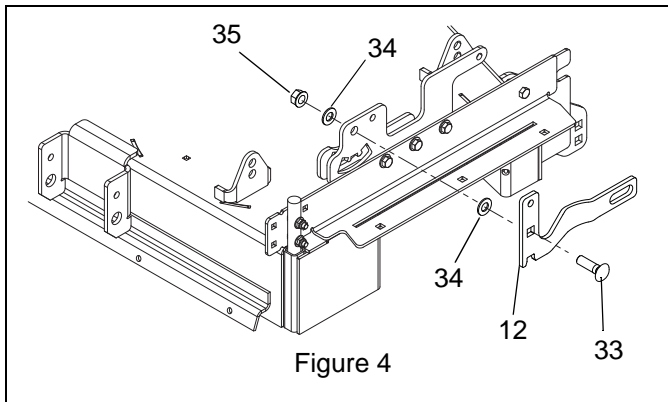
NOTE: If preferred on smaller deck installations, excess overhang can be removed from the rear of the mounting plate. If this is done, use the notches as cutting guides. Deburr, smooth and paint any exposed surfaces.



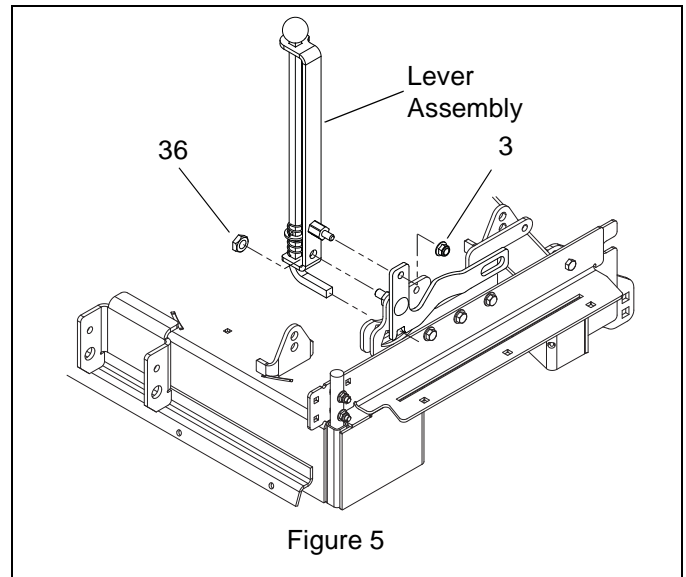
3. Insert mount pin on assembly into opening at rear of discharge opening on mower deck and fasten at front with 3/8 x 1-1/4" hex bolt (item 14), 3/8 x 1-1/2" flat washer (item 32) and 3/8" nyloc flange nut (item 3). See Figure 2.



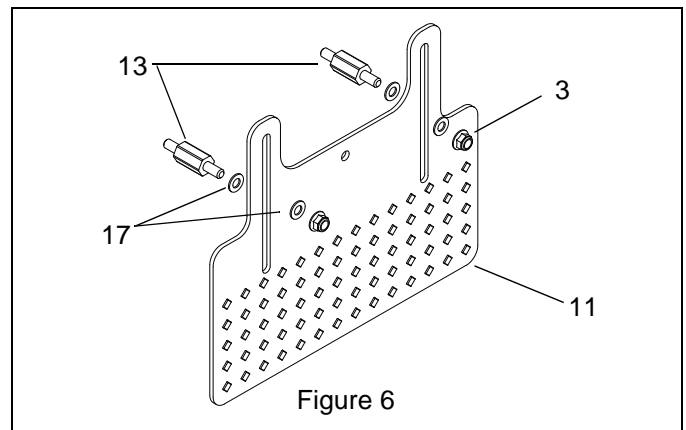
4. Install lifter cam bracket (item 12) onto chute assembly with 1/2 x 1-3/4" round head square neck bolt (item 33), two 1/2 x 1.00" nylon washers (item 34) and 1/2" locking top flange nut (item 35). See Figure 4. Tighten enough to allow rotation without binding but maintain slight resistance.



5. Install lever assembly onto chute assembly. Depress spring to allow pin and bolt to correctly align with holes on lever assembly and lifter cam bracket. Fasten with 3/8" nyloc flange nut (item 3) at cam bracket and 1/2" thin nyloc lock nut (item 36) at lever assembly. See Figure 5.
6. Depress black ball knob and operate lever. Ensure that lever moves through its full travel without binding and that it locks securely in all three positions.

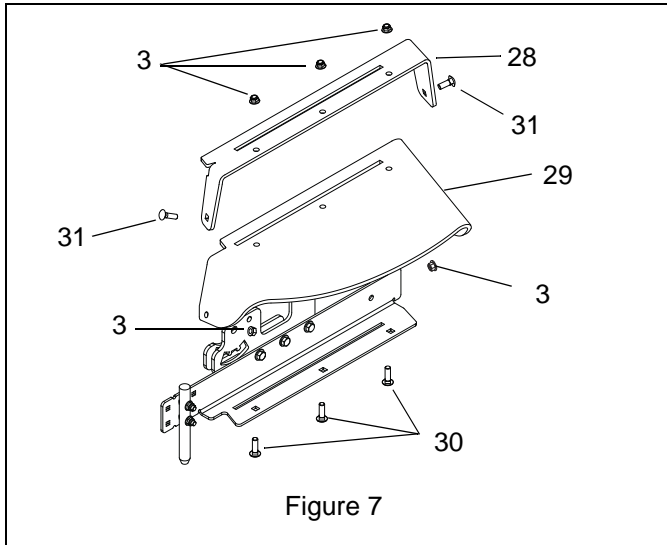


7. Attach two stabilizer pins (item 13) to baffle plate (item 11) with four 3/8" nylon flat washers (item 17) and two 3/8" nyloc flange nuts (item 3). Tighten enough to allow baffle plate to slide on pins without binding. See Figure 6.

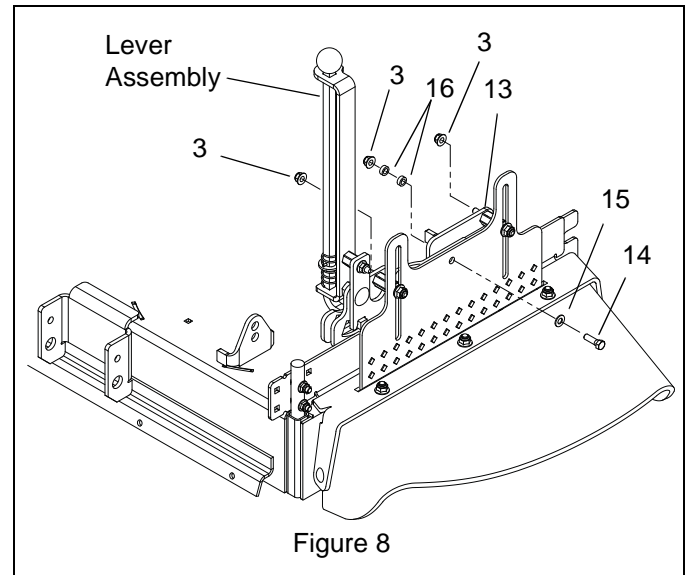


- Attach rubber chute (item 29) and chute support bracket (item 28) to chute mount bracket with three 3/8 x 1-1/4" round head square neck bolts (item 30), two 3/8 x 1" round head square neck bolts (item 31), and five 3/8" nyloc flange nuts (item 3). Position three center bolts with the flange nuts facing out. Position the front and rear bolts with the flange nuts facing inward. See Figure 7.

IMPORTANT: To prevent baffle plate from binding in assembly, ensure that slots in rubber chute and chute brackets are fully aligned before tightening hardware.



- Position lever assembly in the middle position of travel.
- Insert baffle plate subassembly into slot in chute assembly and fasten stabilizer pins (item 13) to chute control plate with two 3/8" nyloc flange nuts (item 3). See Figure 8.
- Align baffle plate with slot in cam bracket and position with 3/8 x 1-1/4 hex bolt (item 14) and 3/8 x 13/16" washer (item 15). See Figure 8.
- From the backside, install two sleeve bushings (item 16) onto hex bolt, through slot in cam bracket, and fasten to cam bracket with 3/8" nyloc flange nut (item 3). Tighten hardware to full tight and then back off nut approximately one flat (1/4 turn) to allow sleeve bushings to rotate.



- Check operation of chute block assembly to ensure that lever locks baffle plate securely in all three positions. If lever is difficult to move, slightly loosen pivot hardware.

OPERATION

Depress black ball knob to release baffle plate lock. Block-N-Chute has three positions: full block, half (top) block, and open.

IMPORTANT: Block-N-Chute is designed for temporary discharge control. It is not a mulching attachment.