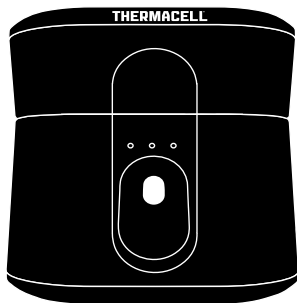


THERMACELL radius™

Zone Mosquito Repellent

User Guide



Active Ingredient:

Metofluthrin 4.0%

*Other Ingredients 96.0%

Total 100.0%

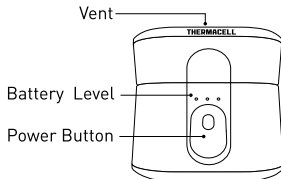
*Contains petroleum distillate

KEEP OUT OF REACH OF CHILDREN

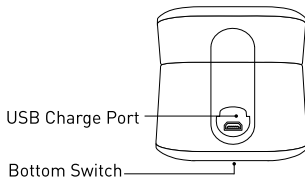
CAUTION: See bottom panel and insert for additional First Aid and Precautions



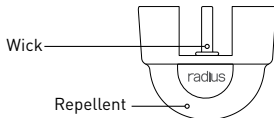
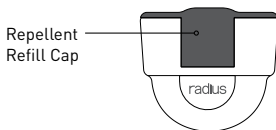
FRONT



BACK



REFILL



Battery Level Check

Lights	Battery Remaining
3	4+ hours
2	3+ hours
1	Less than 3 hours
1 blinking	Less than 30 minutes

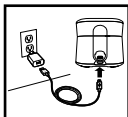
DIRECTIONS FOR USE

It is a violation of Federal law to use this product in a manner inconsistent with its labeling.

Charge the repeller

Fully charge before first use.

Insert the USB charger provided into the repeller. Plug the charger into a standard 120v wall receptacle.



Fully charging the battery takes approximately 5 hours.

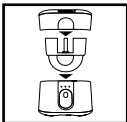
Insert Refill

Replace empty repellent refill when appliance is turned off

Open the repeller.

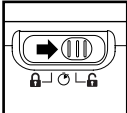


Remove the cap from the refill.



Drop refill into base.

Close the repeller.



Use ON/OFF Manually

Slide bottom switch to the **UNLOCK** [🔓] position.

Press and hold the **POWER** button to turn on.

To turn off, press and hold the **POWER** button



Use AUTO-OFF Timer

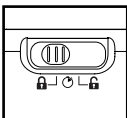
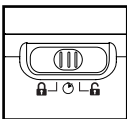
Slide bottom switch to **TIMER** [🕒] position.

Press and hold the **POWER** button to turn on.

Repeller will automatically turn off in 120 minutes.

Storage and Transport

Slide the switch on bottom to the **LOCK** [🔒] position.



STORAGE AND DISPOSAL

Do not contaminate water, food, or feed by storage and disposal of repellent unit.

PESTICIDE STORAGE: Store in a cool, dry place. Keep container tightly closed. Do not disassemble device. Should a battery become ruptured, do not allow contact with water. Keep refills out of direct sunlight. **PESTICIDE DISPOSAL AND CONTAINER HANDLING:** Non-refillable cartridge. Do not reuse or refill this cartridge.

If empty or at the end of the season, dispose of unused portion according to label directions: Place in trash.

If partly filled: Call your local solid waste agency for disposal instruction. Never place unused product down any indoor or outdoor drain.

USEFUL TIPS

- For best results, let the repeller run for 15 minutes to establish complete protection.
- Only use Thermacell Radius Refills in this repeller.
- For use outdoors on patios, decks, unenclosed porches, walkways, around swimming pools and other areas where mosquito protection is desired. **Do not use indoors.**
- Only operate with vent facing upwards.
- Do not cover the device while in use.
- Only use with battery charger provided.
- The refill wick will get hot while in use. Always allow to cool before handling.
- Do not use or leave in direct sunlight or in other extremely hot conditions.
- Store at room temperature in a dry environment when not in use.
- Do not attempt to touch or break the refill wick, or open the refill.
- Prior to transporting, remove the repellent refill from the device and replace repellent refill cap.
- Do not store with battery completely discharged for extended periods of time. Batteries should be charged at least once every 3 months during storage.
- If any leaks, odors, discolorations, or deformities are noticed in the battery, immediately discontinue use and dispose of safely.

PRECAUTIONARY STATEMENTS

HAZARDS TO HUMANS AND DOMESTIC ANIMALS

CAUTION

Harmful if swallowed. Wash hands thoroughly with soap and water after handling and before eating, drinking, chewing gum, using tobacco or using the toilet.

FIRST AID

IF SWALLOWED: Immediately call a poison control center or doctor. Do not induce vomiting unless told to do so by a poison control center or doctor. Do not give **any** liquid to the person. Do not give anything by mouth to an unconscious person.

HOTLINE NUMBER

Have the product container or label with you when calling a poison control center or doctor, or going for treatment. In case of medical emergencies or health and safety inquiries or in case of fire, leaking or damaged containers, information may be obtained by calling 1-866-753-3837.

NOTE TO PHYSICIAN

Contains petroleum distillates-vomiting may cause aspiration pneumonia.

ENVIRONMENTAL HAZARDS

Do not apply to water.

PHYSICAL OR CHEMICAL HAZARDS

Use only with provided Thermacell Radius lithium-ion battery. Do not pry battery with any instrument or tool or put in a fire. Battery may burst or release toxic materials.



Thermacell Repellents, Inc.
26 Crosby Drive
Bedford, MA 01730
Email: Service@thermacell.com
Toll Free 866-753-3837

IMPORTANT: READ BEFORE USE

Read the entire Directions for Use, Conditions, Disclaimer of Warranties and Limitations of Liability before using this product. If terms are not acceptable, return the product container at once. By using this product, user or buyer accepts the following conditions, disclaimer of warranties and limitations of liability.

CONDITIONS: The directions for use of this product are believed to be adequate and must be followed carefully. However, it is impossible to eliminate all risks associated with the use of this product. Ineffectiveness or other unintended consequences may result because of such factors as weather conditions, presence of other materials, or the manner of use or application, all of which are beyond the control of Thermacell Repellents, Inc. All such risks shall be assumed by the user or buyer.

DISCLAIMER OF WARRANTIES: TO THE EXTENT CONSISTENT WITH APPLICABLE LAW, THERMACELL REPELLENTS INC. MAKES NO OTHER WARRANTIES, EXPRESS OR IMPLIED, OF MERCHANTABILITY OR OF FITNESS FOR A PARTICULAR PURPOSE OR OTHERWISE, THAT EXTEND BEYOND THE STATEMENTS MADE ON THIS LABEL. No agent of Thermacell Repellents, Inc. is authorized to make any warranties beyond those contained herein or to modify the warranties contained herein. To the extent consistent with applicable law, Thermacell Repellents Inc. disclaims any liability whatsoever for special, incidental or consequential damages resulting from the use or handling of this product.

LIMITATIONS OF LIABILITY: TO THE EXTENT CONSISTENT WITH APPLICABLE LAW, THE EXCLUSIVE REMEDY OF THE USER OR BUYER FOR ANY AND ALL LOSSES, INJURIES OR DAMAGES RESULTING FROM THE USE OR HANDLING OF THIS PRODUCT, WHETHER IN CONTRACT, WARRANTY, TORT, NEGLIGENCE, STRICT LIABILITY OR OTHERWISE, SHALL NOT EXCEED THE PURCHASE PRICE PAID, OR AT THERMACELL REPELLENTS INC. ELECTION, THE REPLACEMENT OF PRODUCT.