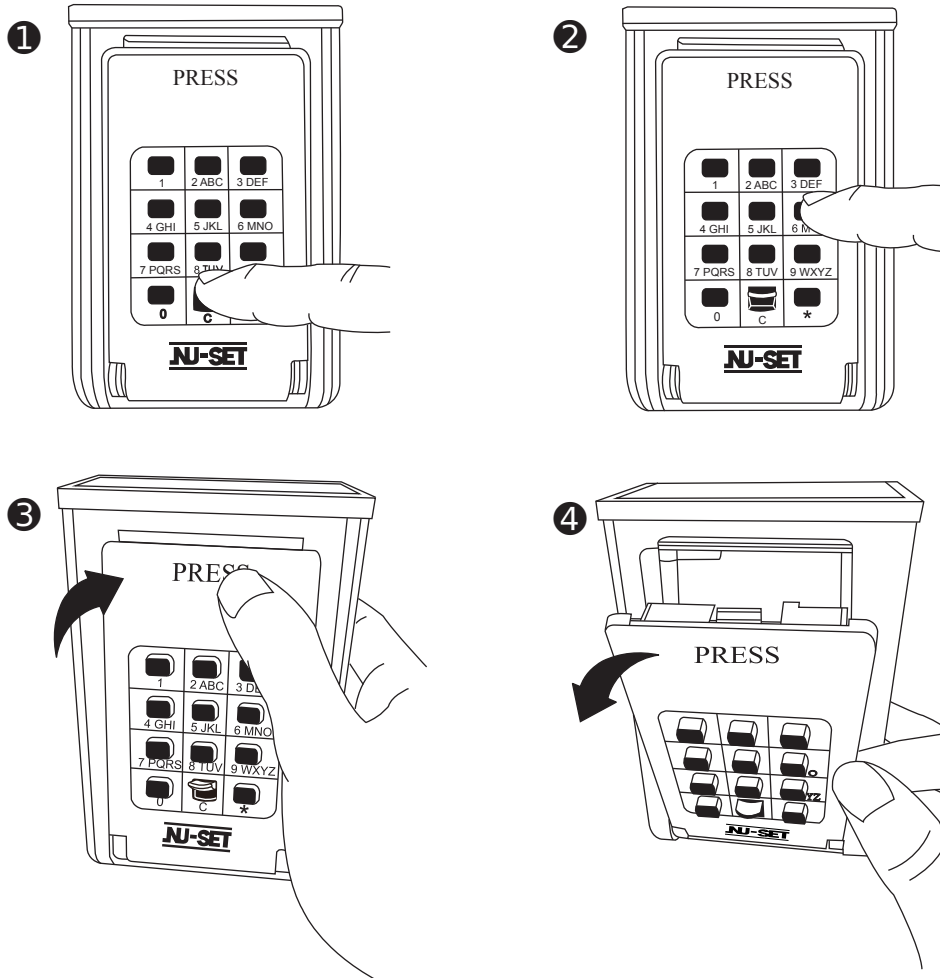


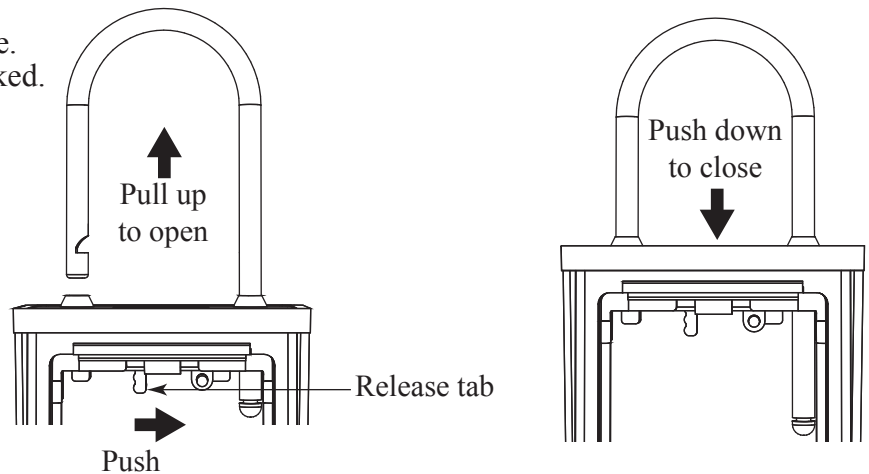
## Opening Instructions:

1. Press the cancel button [C] located between the [0] and [\*] keys.
2. Press the upper part of the faceplate and the lid will spring open when pressure is released. The push button lockbox does not come preset to any combination.
3. If a combination is set, enter the combination and press the upper part of the faceplate to open.



## Mounting the Lockbox:

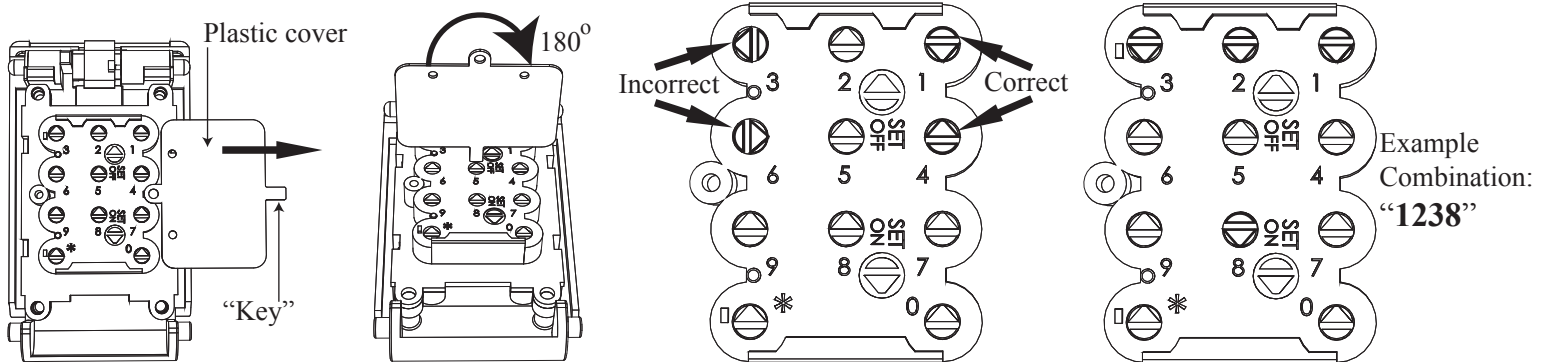
1. Open the compartment door (see opening instructions steps 1-3).
2. Push the release tab to the right and pull on the shackle to unlock.
3. Hang the lockbox on a stationary object.
4. Push the shackle back into body to secure. Pull on the shackle to make sure it is locked.



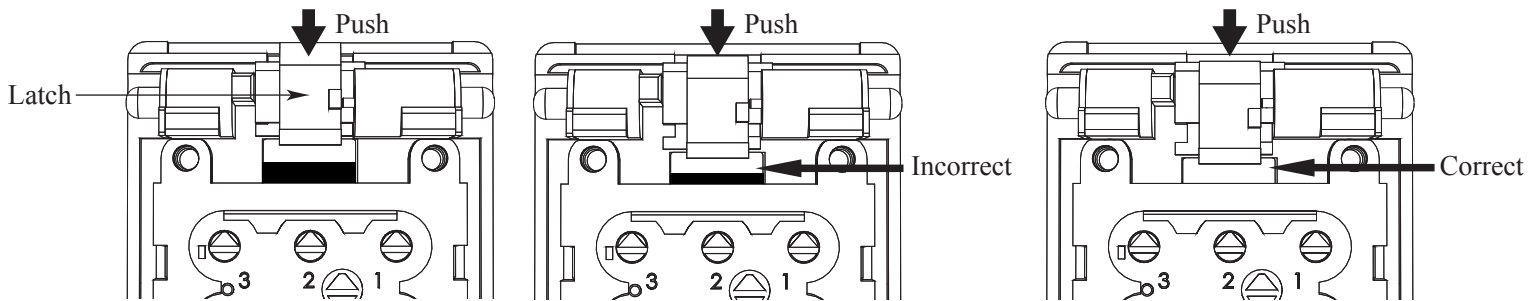
## Setting the Combination:

**\*Please read all instructions thoroughly before setting the combination\***

1. For best security, choose a combination between 4 and 7 numbers and/or letters.
2. Open lid using the “Opening Instructions” steps # 1 to 3.
3. To remove the lid, position it to a 45 degree angle and pull it free from body.
4. Remove the plastic cover to expose the back of the lid. There are 11 yellow buttons with the arrow pointing up towards the top of the lid. Below the arrows are the corresponding numbers to the front of the lid. If using a lettered combination, find the corresponding numbers before proceeding.
5. The rectangular tab on the plastic cover can be used as a “key” to change the combination. To set, **push in** the desired button and turn 180 degrees. The arrow on the button should now be pointing down towards the bottom of the lid. Do this for each number or letter in the desired combination.



6. Double check to make sure the combination is set correctly. Buttons with arrow pointing down are “active” and represent the combination. The rest of the arrows should be pointing upwards.
7. Test the combination before putting the lid back into the lockbox body. Press the [C] button on the front of the lid, enter the combination, and **push down** on the latch. If the colored portion of the latch is not visible, the combination is set correctly. If the color portion is visible, **DO NOT CLOSE THE LID**. Check the arrows again to make sure the correct buttons are activated and repeat this procedure until the combination is set correctly.



8. Once the combination is verified to be correct, place the lid back onto the body and press the upper portion of the lid to lock.
9. The plastic cover can be secured onto the back of the lid by a small screw to prevent unintended changes.