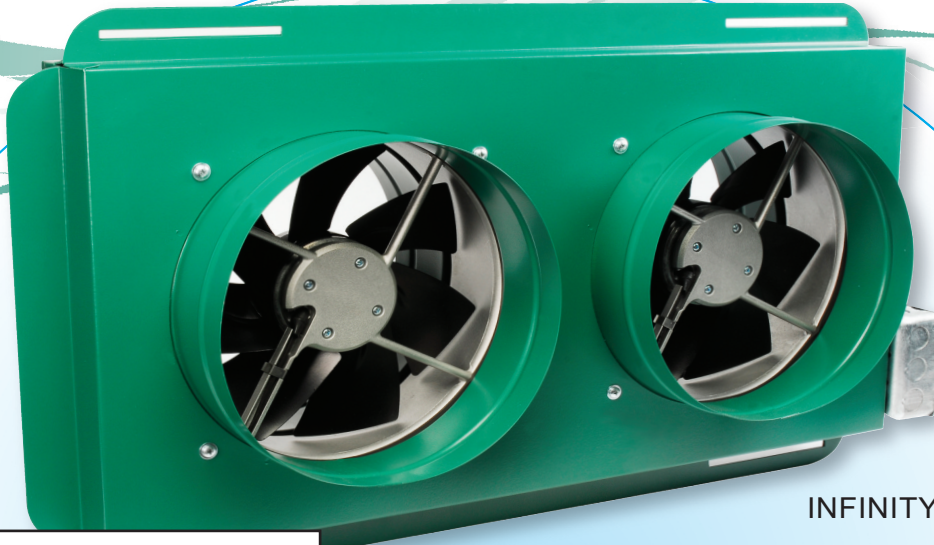


Tamarack Technologies "The Infinity"
**Ducted Whole House
Ventilation System**



INFINITY 2200



The Infinity offers an infinite variety of ducted ventilation solutions to improve indoor air quality

- The whole house fan solution for homes with sealed attics
- Reduce mold, mildew and save on energy expense by eliminating the need for air conditioning
- Operates with a variety of line voltage controls including timer, thermostat and wall switch
- Four 10" duct collars capable of routing air throughout your whole house
- Ducted design is quiet and allows installation almost anywhere in your home
- Assembled in the USA

LIKE US ON
FACEBOOK



FOLLOW US
ON TWITTER



Tamarack
Technologies, Inc.

Ventilation Solutions
www.tamtech.com

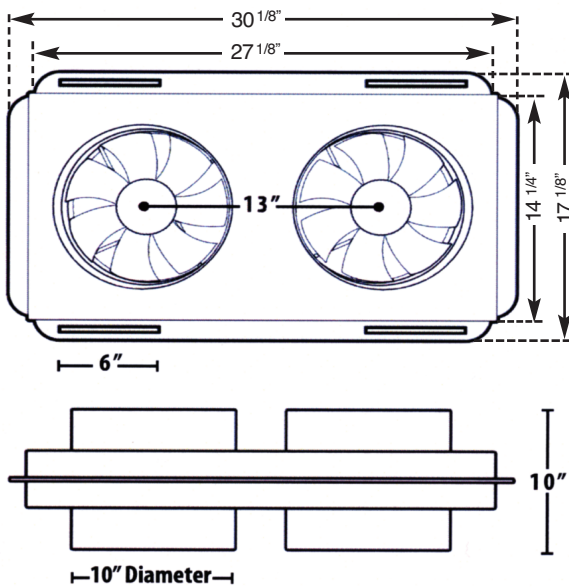
800-222-5932

Ducted Whole House Ventilation System



Easy to Install - Mounting Hardware Included.

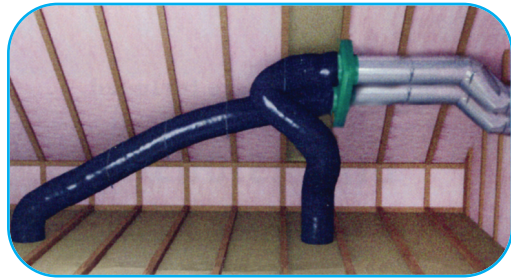
DIMENSIONS



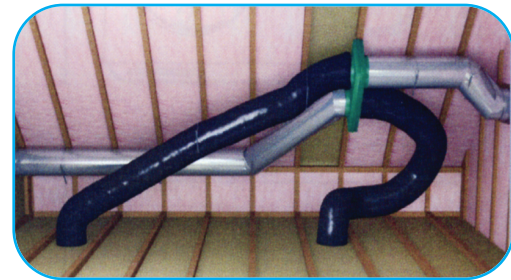
SPECIFICATIONS

Voltage: 115 VAC 60Hz
Power: 336 Watts 2.8 Amps
Air Flow: 2,200 CFM*(1,100 x 2)
Weights: Fan Only = 27 lbs

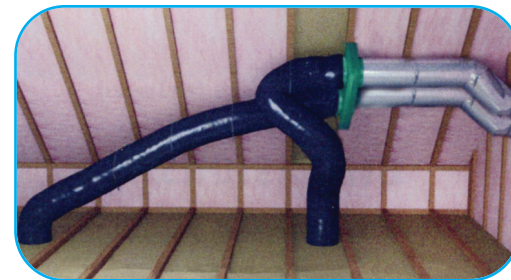
**CFM rates measured in a controlled test environment.
 Actual results will vary due to building construction.*



TTI-INF2200PK
 Infinity Positive Make Up Air Kit



TTI-INF2200BK
 Infinity Balanced Air Kit



TTI-INF2200NK
 Infinity Negative Exhaust Air Kit



- Housing dimensions 12-1/2"x13-1/2"x7" (Dimensions include cover tabs and knobs)
- Two 10" Duct Collars, 1 inlet, 1 outlet, 3" long - one with convex bead
- Filter size 12" x 12"x1" - Filter type: Merv8

 **Tamarack**
 Technologies, Inc.
Ventilation Solutions
www.tamtech.com
 800-222-5932