

8 ft 3-PIECE LINE RAIL KIT INSTALLATION INSTRUCTIONS

Tools and Items Needed

- Drill/power screwdriver
- Carpenter's level
- Miter or circular saw with carbide tip blade
- Carpenter's pencil
- Tape measure
- Safety glasses/goggles
- Gloves

Additional Items Needed (Not Included In Kit):

- 1 - Rail Connector Bracket, 4-pack
- 2 - Deck Posts
- 20 - Round Metal Balusters
- 2 - Railing Support Blocks

Procedures

Step 1: Measure the distance between posts and cut the rails to size. For even spacing between the balusters and posts, be sure to cut from both ends of the rails.

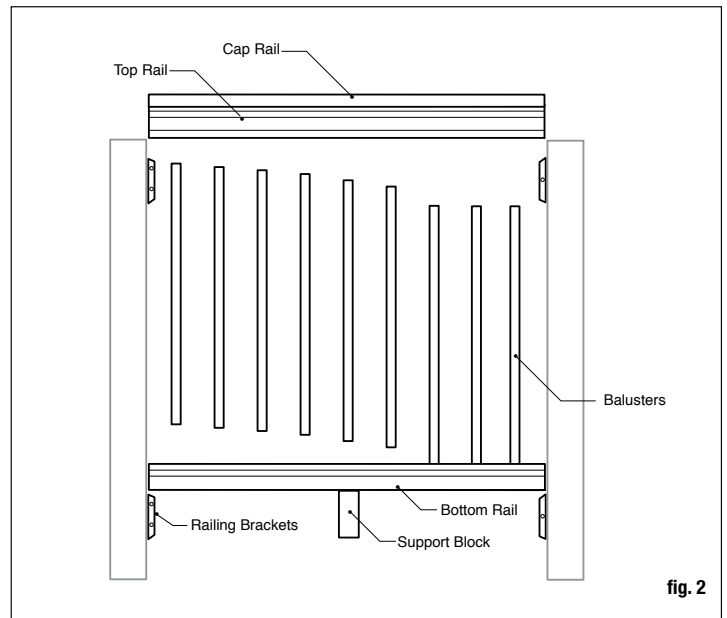
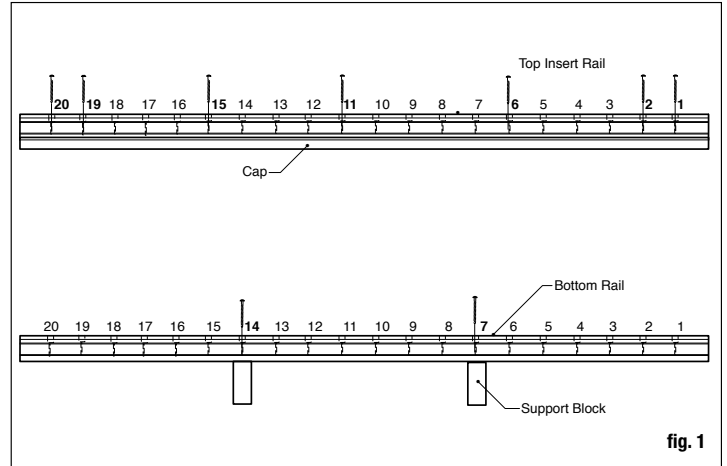
Step 2: Place the moulded cap rail upside down on a flat surface. Next, place one of the 2x4 rails into the moulded cap rail channel so that the holes are facing up. Starting from either end, fasten the top 2x4 to the cap rail using the (7) 3" screws through holes indicated in fig. 1. If rails are trimmed, predrill any additional holes with a 1/8" drill bit and insert the screw into the next nearest hole.

Step 3: Attach support blocks to the bottom of the bottom 2x4 rail. The support blocks install under holes 7 and 14. If your rail was trimmed, divide overall length by three to determine support block spacing and install under the holes closest to this measurement. Predrill with a 1/8" drill bit (fig. 1).

Step 4: Attach the (4) 2x4 railing brackets to the posts according to the included instructions.

Step 5: Attach the bottom 2x4 rail, with the holes facing up, using the 2x4 railing brackets. Insert the balusters into the predrilled holes (fig. 2).

Step 6: Attach the cap rail by aligning the holes to the baluster at one end of the rail and working your way to the opposite end, ensuring that all of the balusters are secured between the two rails (fig. 2).



THE DIAGRAMS AND INSTRUCTIONS IN THIS BROCHURE ARE FOR ILLUSTRATION PURPOSES ONLY AND ARE NOT MEANT TO REPLACE A LICENSED PROFESSIONAL. ANY CONSTRUCTION OR USE OF THE PRODUCT MUST BE IN ACCORDANCE WITH ALL LOCAL ZONING AND/OR BUILDING CODES. THE CONSUMER ASSUMES ALL RISKS AND LIABILITY ASSOCIATED WITH THE CONSTRUCTION OR USE OF THIS PRODUCT. THE CONSUMER OR CONTRACTOR SHOULD TAKE ALL NECESSARY STEPS TO ENSURE THE SAFETY OF EVERYONE INVOLVED IN THE PROJECT, INCLUDING, BUT NOT LIMITED TO, WEARING THE APPROPRIATE SAFETY EQUIPMENT. EXCEPT AS CONTAINED IN THE WRITTEN LIMITED WARRANTY, THE WARRANTOR DOES NOT PROVIDE ANY OTHER WARRANTY, EITHER EXPRESS OR IMPLIED, AND SHALL NOT BE LIABLE FOR ANY DAMAGES, INCLUDING CONSEQUENTIAL DAMAGES.