

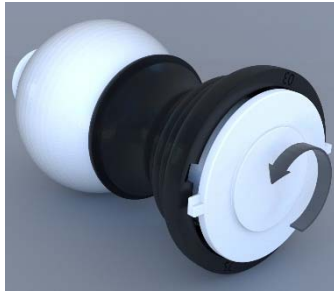
PF7703/04/05/06

Christmas Topiary with Pedestal

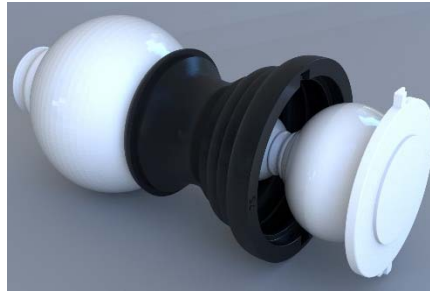
Assembly Instruction

Note: Current packaging is the way Topiary should be stored when not in use.

Step 1: Lay the topiary on its side. Twist the bottom locking cap counter-clockwise to remove finial.



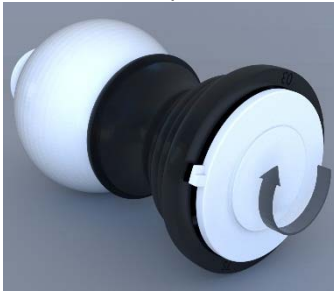
Step 2: Pull the bottom locking cap from its place very carefully, removing the finial.



Step 3: Twist the bottom locking cap counter-clockwise to detach finial from bottom locking cap.



Step 4: Return bottom locking cap back to its original position. Turn bottom locking cap clockwise until it locks in place.



Step 5: Insert the finial into the thread on the base as pictured. Turn finial clockwise until it locks in place.



Image of the assembled item:



CARE AND MAINTENANCE

Place in a protected area to preserve the lustrous sheen. Clean with a soft cotton rag or use a bristle brush to remove dirt and grime. Resin objects experience natural aging and weathering, which to most adds to the distinctive appeal. If however, you wish to impede the weathering, a clear topcoat sealer can be applied. Sealer spray applied annually will also restore any lost luster.

Do not use this product for other purposes than its intended use.

MADE IN THE PHILIPPINES