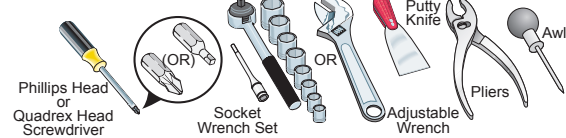


## WARNING

To avoid electric shock, which can cause death or severe personal injury, do not connect your refrigerator to an electrical power source until you have completed Step 3 of these instructions.

### Tools Necessary:



## NOTE

These installation instructions are provided only as a possible customer option. We recommend that you use a service or kitchen contracting professional to install your refrigerator.

## 1 Prepare The Installation Site

Include these minimum guidelines in your site preparation:

- Choose a place near a grounded electrical outlet.
- Do not use an extension cord or an adapter plug.
- Avoid direct sunlight and close proximity to a range, dishwasher or other heat source.
- Floor should be level and able to support a fully loaded refrigerator.

Allow the following clearances for ease of installation, proper air circulation, and plumbing and electrical connections:

**Sides & Top:** 3/8 inch

**Rear:** 1 inch

## NOTE

Information about cabinetry construction for your new appliance is available for contractors. Call 1-877-435-3287.

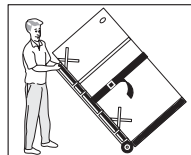
## CAUTION

Room temperatures below 55°F (13°C) or above 110°F (43°C) will impair cooling ability of your refrigerator's compressor.

## 2 Transport Unpackaged Refrigerator To Site

By now, you have already removed your refrigerator's shipping carton. You may still need to use a hand truck to move it through close spaces or entrances. If the refrigerator is larger than an entrance, consider two options:

- Remove the entrance door if one exists.
- Remove the refrigerator doors (see how in your Use & Care Guide).



When using a hand truck:

- Load refrigerator from side of cabinet only.
- Do not run retaining straps over handles.
- Do not over-tighten retaining straps.
- Never use refrigerator handles to move the refrigerator.
- Remove tape from doors only after unit is in place.

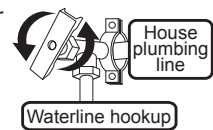
## CAUTION

Shifting the refrigerator from side to side may damage flooring.

## 3 Connect Water Supply

What you will need:

- Access to a cold water line with pressure of 30-100 psi.
- Copper tubing with 1/4-inch (6.4mm) OD. Length for this tubing is the distance from the rear of the refrigerator to your household water supply line **plus** 7 feet (2.1 meters).
- A shut-off valve for the connection between your household water line and the refrigerator supply line. **Do not** use a self-piercing shut-off valve.
- A compression nut and ferrule (sleeve) for the water supply connection at the rear of your refrigerator.



## CAUTION

To avoid property damage:

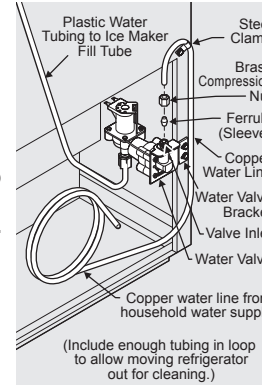
- Use copper tubing for the water supply line (plastic tubing is more likely to leak).
- Ensure water supply complies with local plumbing codes.

## NOTE

Kit #53039117950, available from your dealer, provides all materials for a water supply installation, including 25 feet of copper tubing and full instructions.

### To connect the water supply to the rear of your refrigerator:

- 1 Ensure that the refrigerator is not plugged in.
- 2 Flush the supply line until water is clear by placing the end of the copper tube in a sink or bucket and opening the shut-off valve.
- 3 Remove the plastic cap from the water valve inlet at the rear of your refrigerator. Discard the cap.
- 4 Slide the brass compression nut, then the ferrule (sleeve) onto copper tube.
- 5 Push the copper tube into water valve inlet as far as it will go (1/4").
- 6 Slide the ferrule (sleeve) into valve and finger-tighten the compression nut onto valve. Tighten another half turn with a wrench. Do not over-tighten.
- 7 Secure the copper tube to your refrigerator's rear panel with a steel clamp and screw (see illustration).
- 8 Coil the excess copper tubing (about 2 1/2 turns) behind your refrigerator as shown. Arrange coiled tubing to avoid vibration or wear against other surfaces.
- 9 Open water supply shut-off valve and tighten any connections that leak.



## NOTE

- The ice maker's fill valve may operate noisily if the household water supply is shut off.
- After ensuring no water leaks exist at any connection, be sure to check for leaks again in 24 hours.

## 4 Place In Permanent Position

If possible, use a hand truck to position the refrigerator directly in front of its cabinet enclosure. Be careful not to move the refrigerator beyond its water supply (copper tubing) connections.

Plug in the power cord, and push the refrigerator straight back into place.

## CAUTION

- Shifting the refrigerator from side to side may damage flooring.
- Do not block the toe grille on the lower front of your refrigerator. Sufficient air circulation is essential for proper operation.

## IMPORTANT

If you are installing your refrigerator without connecting it to a water supply, make sure the ice maker's power switch is turned Off (see the Use & Care Guide for more details).

## 5 Level Refrigerator & Adjust Doors (if necessary)

Guidelines for final positioning of your refrigerator:

- All four corners of the cabinet must rest firmly on the floor.
- The cabinet should be level at the front and rear.
- The sides should tilt 1/4-inch (6 mm) from front-to-back (to ensure that doors close and seal properly).
- Doors should align with each other and be level.

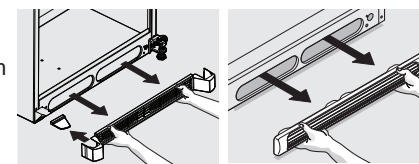


Figure 1

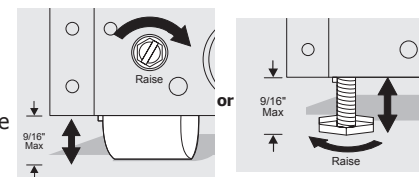


Figure 2

Figure 3

To level the cabinet using the front rollers:

- 1 Remove the toe grille (Figure 1).
- 2 Use a flat-blade screwdriver or 3/8 inch socket wrench to raise or lower the front rollers (Figure 2). Do not raise the cabinet more than 9/16".
- 3 Use adjustable wrench to adjust leveling screws. Lower the leveling screws on each side clockwise until they contact the floor (Figure 3). Do not raise the cabinet more than 9/16".

## NOTE

Raise the front of the refrigerator enough so the doors close freely when opened halfway. The refrigerator should slope 1/4 inch to 1/2 inch from front-to-back. Then level the refrigerator from side-to-side.

## WARNING

The anti-tip device must be installed according to the instructions in your Use & Care Manual. Failure to do so will result in injury.

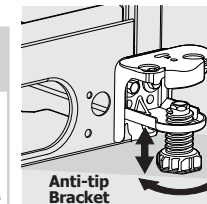
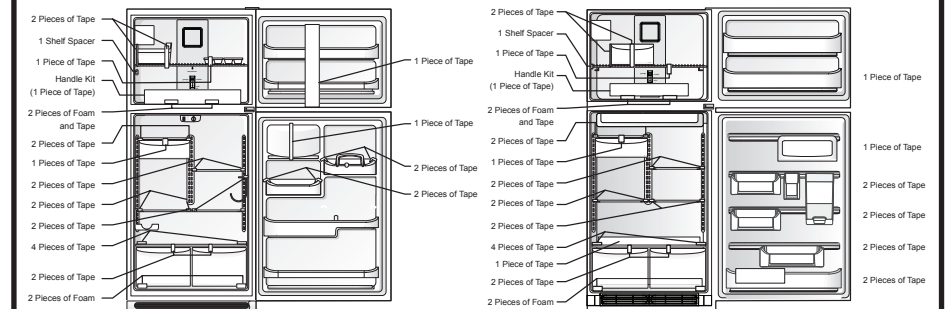


Figure 4 (some models)

- 4 Some models are equipped with an anti-tip bracket (Figure 4). Lower it clockwise until it contacts the floor.

## 6 Remove Internal Shipping Materials

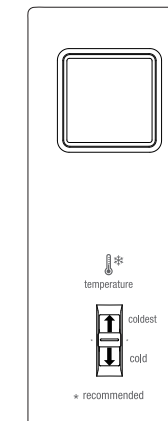
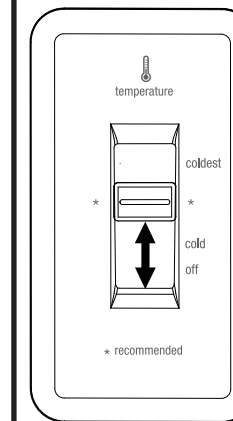
We use packing foam and tape to secure the internal parts of your refrigerator for shipping. Once the refrigerator is in position, you can remove this material.



Location of these materials may vary depending on your model.

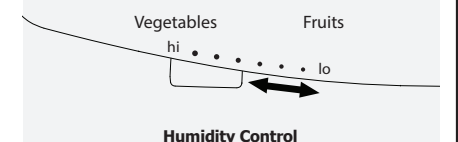
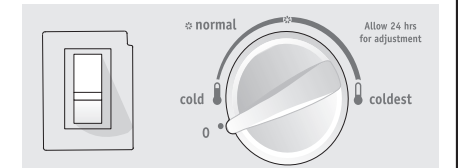
## 7 Controls

When changing controls, wait 24 hours before making additional adjustments.



## NOTE

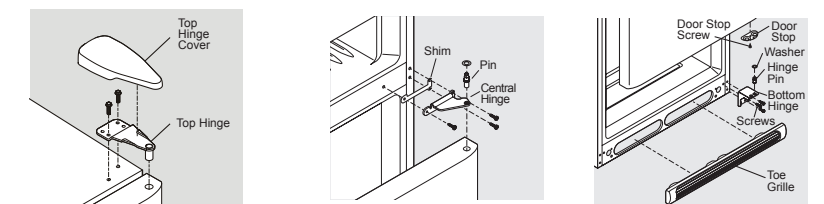
Allow 15 minutes for compressor to start after initial start up or power interruption.



Humidity Control

## 8 Door Removal (if necessary)

If you need to remove the doors to get your refrigerator into the house, please see "Door Removal Instructions" in your Use & Care Manual.



## 9 Installation Checkoff List

### Doors

- Handles are secure and tight
- Door seals completely to cabinet on all sides
- Freezer door is level across the top

### Leveling

- Refrigerator is level, side to side and tilted 1/4" (6mm) front to back
- Toe grille is properly attached to refrigerator
- Cabinet is setting solid on all corners
- Anti tip bracket set

### Electrical Power

- House power turned on
- Refrigerator plugged in

### Ice Maker

- House water supply connected to refrigerator
- No water leaks present at all connections - recheck in 24 hours
- Ice Maker is turned ON.

### Final Checks

- Shipping material removed
- Fresh Food and Freezer controls set
- Crisper Humidity controls set
- Registration Card sent in