

RYOBI

OPERATOR'S MANUAL MANUEL D'UTILISATION MANUAL DEL OPERADOR

WHOLE STUD DETECTOR

DÉTECTEUR DE MONTANT/FIL ÉLECTRIQUE

DETECTOR DE ENTRAMADO COMPLETO

ESF5001

SAFETY RULES FOR WHOLE STUD DETECTOR

⚠ WARNING:

READ AND UNDERSTAND ALL INSTRUCTIONS. Failure to follow all instructions listed below, may result in electric shock, fire and/or serious personal injury.

⚠ WARNING:

Changes or modifications to this unit not expressly approved by the party responsible for compliance could void the user's authority to operate the equipment.

- **Read operator's manual carefully. Learn the applications and limitations, as well as the specific potential hazards, related to this product.** Following this rule will reduce the risk of electric shock, fire, or serious injury.
- **Do not operate battery products in explosive atmospheres, such as in the presence of flammable liquids, gases or dust.** Battery products create sparks which may ignite the dust or fumes.
- **Do not disassemble the product.** Contact with internal parts may increase the risk of electric shock or cause damage to the product.
- **Do not use on a ladder or unstable support.** Stable footing on a solid surface enables better control of the product in unexpected situations.
- **Do not store the product in an area of high heat or humidity. Do not expose the product to extended high heat from the sun (such as on a vehicle dashboard.) To reduce the risk of serious personal injury, do not store outside or in vehicles.** Damage to the product or the battery can result.
- **Do not expose product to rain or wet conditions.** Water entering a product will increase the risk of electric shock.
- **Use the product in accordance with these instructions and in the manner intended for the product, taking into account the environmental conditions and the work to be performed.** Use of the product for operations different from those intended could result in a hazardous situation.
- **Readings on some surfaces may be unreliable.** Be aware that wallpaper containing metallic foil or fibers and plaster with metal mesh may cause the unit to function improperly.
- **Ensure the device is disconnected and turned off before inserting or changing batteries.**
- **Do not mix old and new batteries or different brands of batteries.**
- **Remove batteries from the device when not in use for an extended time.**
- **Always replace the alkaline battery with the same type of alkaline battery.** Use of any other batteries may create a risk of injury and fire.
- **This device should not be operated unless the battery compartment is closed.**
- **Do not place battery devices or their batteries near fire or heat.** This will reduce the risk of explosion and possibly injury.
- **Do not crush, drop or damage battery. Do not use batteries that have been dropped or received a sharp blow.** A damaged battery is subject to explosion. Properly dispose of a dropped or damaged battery immediately.

ONE WORLD TECHNOLOGIES, INC.

1428 Pearman Dairy Road, Anderson, SC 29625 • Phone 1-877-205-5714
États-Unis, Téléphone 1-877-205-5714 • USA, Teléfono 1-877-205-5714
www.ryobitools.com

SAFETY RULES FOR WHOLE STUD DETECTOR

- **Batteries can explode in the presence of a source of ignition, such as a pilot light.** To reduce the risk of serious personal injury, never use any battery device in the presence of open flame. An exploded battery can propel debris and chemicals. If exposed, flush with water immediately.
- **Under extreme usage or temperature conditions, battery leakage may occur. If liquid comes in contact with your skin, wash immediately with soap and water. If liquid gets into your eyes, flush them with clean water for at least 10 minutes, then seek immediate medical attention.** Following this rule will reduce the risk of serious personal injury.
- **Save these instructions.** Refer to them frequently and use them to instruct others who may use this device. If you loan someone this device, loan them these instructions also.

OPERATION

INSTALLING / REPLACING THE AA BATTERY

See Figure 1.

One AA battery is preinstalled in the unit. Before first use, locate and remove the red pull tab to activate the battery.

- Press and slide the battery cover to open.
- Install battery according to the polarity indicators.
- Replace the battery cover, making sure it is secure before use.
- Do not use the product without the battery cover installed.

NOTE: Remove the battery for storage when device will not be used for long periods of time.

OPERATING TIPS

See Figure 2.

Studs or joists are typically spaced 16 inches or 24 inches apart and are 1.5 inches in width. Anything closer together or of a different width may not be a stud, joist, or firebreak.

- Grip the unit only by the gripping surfaces located on the top and bottom on each side of the unit.

NOTE: Gripping the device anywhere else on the unit may lead to faulty readings due to interference with the sensor.

- For best results, use both hands so the unit remains firmly against the wall surface during the entire detection process. If one hand is used, be sure to use the same hand throughout the detection process. Changing hands may interfere with the sensor and lead to faulty readings.

USING THE STUD DETECTOR

See Figures 3 - 4.

NOTE: Readings on some surfaces may be unreliable. Be aware that wall-paper containing metallic foil or fibers and plaster with metal mesh may cause the unit to function improperly. Lath and plaster may also produce inaccurate readings because of varying wall densities.

- Place the unit against the wall and press and hold one or both of the ON/OFF buttons. Hold the product still to allow the unit to calibrate. When the calibration process is completed, the LED lights will illuminate in sequence and then all flash once.

NOTE: Do not place the unit over a stud during the calibration process.

NOTE: If the LEDs flash five times before calibration, the battery is low and needs replacing.

NOTE: If you change hands, the unit will automatically recalibrate. Hold the product still to allow the unit to calibrate.

Locating studs or joists:

- Once calibration is complete, continue holding the ON/OFF buttons and begin to slowly move the unit in a straight line to the left or right against the wall.
- As you near a stud, the graduated display will begin to light up. The moving illuminated LEDs indicate a stud. The LED display is capable of showing the entire width of a 2x4 stud.
- When you reach the center of the stud, the two LEDs around the center mark will illuminate, indicating the unit is on center.
- Keep the unit still. Using one hand, press the stud center marker to leave a small dimple on the wall surface. Keep other hand on the ON/OFF switch.
NOTE: LED display may shift when you touch the stud center marker. This is normal and should not affect your reading.
- When using two hands, to continue finding studs return hand to grip zone and activation button and begin sliding unit against surface.
NOTE: If unit is moved before returning other hand, LEDs will flash and the unit will error. Recalibrate to resume.
- The unit will automatically turn off in 3 minutes even when the buttons remain pressed. If this occurs while detecting a large area, release the ON/OFF buttons and repeat the steps of using the stud detector.

AC DETECTION

See Figure 5

⚠ WARNING:

Do not rely on this product to penetrate a wall with any uninsulated tool. Contacting a live electrical wire may cause a serious personal injury.

A red LED will illuminate when a live electrical wire is detected behind the surface.

NOTE: Be aware of any electrical wires you encounter and avoid driving a fastener into them.

MAINTENANCE

⚠ WARNING:

When servicing, use only identical replacement parts. Use of any other parts could create a hazard or cause product damage.

GENERAL MAINTENANCE

Avoid using solvents when cleaning plastic parts. Most plastics are susceptible to damage from various types of commercial solvents and may be damaged by their use. Use clean cloths to remove dirt, dust, oil, grease, etc.

STORAGE

Store in a cool, dry location to prevent condensation or mold from forming inside the product.

Do not store the device at temperatures greater than 122° F (such as on a dashboard or vehicle interior).

BATTERY RECYCLING

Consult the Earth 911 website (www.earth911.com) or your local waste authority for information regarding available recycling and/or disposal options.

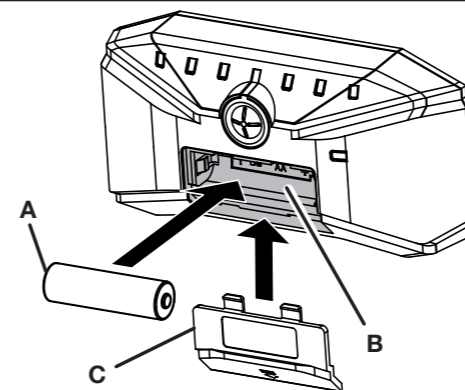
⚠ WARNING:

Do not attempt to destroy or disassemble batteries or remove any of their components. All batteries must be recycled or disposed of properly. Do not discard large amounts of used batteries together. "Dead" batteries often have residual charge. When grouped together, these batteries can become "live" and pose a risk of possible serious injury.

NOTE: This equipment has been tested and found to comply with the limits for a Class B digital device, pursuant to Part 15 of the FCC Rules. These limits are designed to provide reasonable protection against harmful interference in a residential installation. This equipment generates, uses and can radiate radio frequency energy and, if not installed and used in accordance with the instructions, may cause harmful interference to radio communications. However, there is no guarantee that interference will not occur in a particular installation. If this equipment does cause harmful interference to radio or television reception, which can be determined by turning the equipment off and on, the user is encouraged to try to correct the interference by one or more of the following measures:

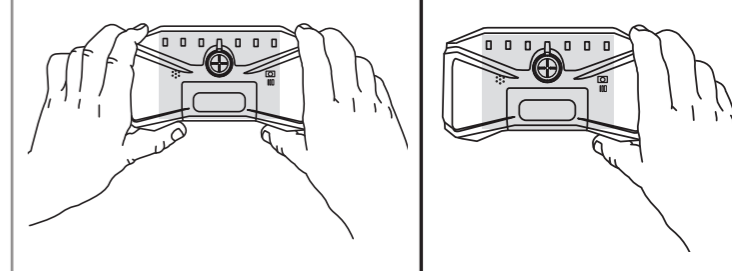
- Reorient or relocate the receiving antenna.
- Increase the separation between the equipment and receiver.
- Connect the equipment into an outlet on a circuit different from that to which the receiver is connected.
- Consult the dealer or an experienced radio/TV technician for help.

Fig. 1



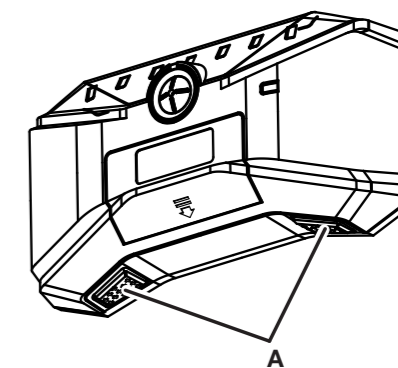
- A - Battery (pile, pila)
- B - Battery compartment (compartiment à pile, compartimiento de pila)
- C - Battery cover (couvercle du logement de pile, tapa del compartimiento para la pila)

Fig. 2



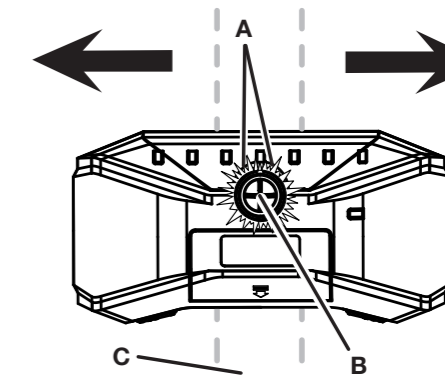
- A - Keep hands from covering shaded area (ne pas couvrir la région ombragée avec vos mains, evite que las manos cubran el área sombreada)

Fig. 3



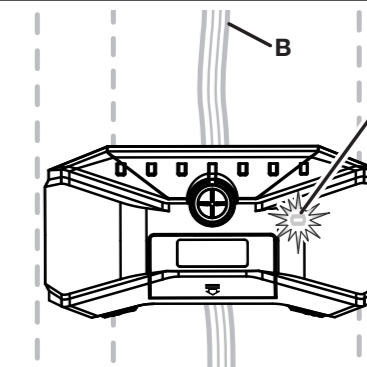
- A - On/Off button (bouton « on/off » [marche/arrêt], botón de encendido y apagado)

Fig. 4



- A - LED light (lumière DEL, luz LED)
- B - Stud center marker (marqueur de centre de montant, marcador del centro del entramado)
- C - Wall stud (poteau mural, entramado de pared)

Fig. 5



- A - LED light (lumière DEL, luz LED)
- B - Electrical wire (fil électrique, cable eléctrico)

This product has a Three-year Limited Warranty. For Warranty details go to www.ryobitools.com
Ce produit est couvert par une garantie limitée de trois (3) ans. Pour connaître les détails de la garantie, visiter le site www.ryobitools.com
Este producto tiene una garantía limitada de tres años. Para ver los detalles de la garantía, visite www.ryobitools.com

995000284
6-16-17 (REV:01)

