



FRIGIDAIRE

Factory Parts Catalog

Product No.	FFGC3626SBA	FFGC3626SSA	FFGC3626SWA
	943253934	943253935	943253933
Series	36" gas	36" gas	36" gas
Color	black	stainless	white
Market	North America	North America	North America
Wiring Diagram	318047112	318047112	318047112
Owner's Guide	A01704503	A01704503	A01704503
Installation Instructions	A01705101	A01705101	A01705101

Frigidaire

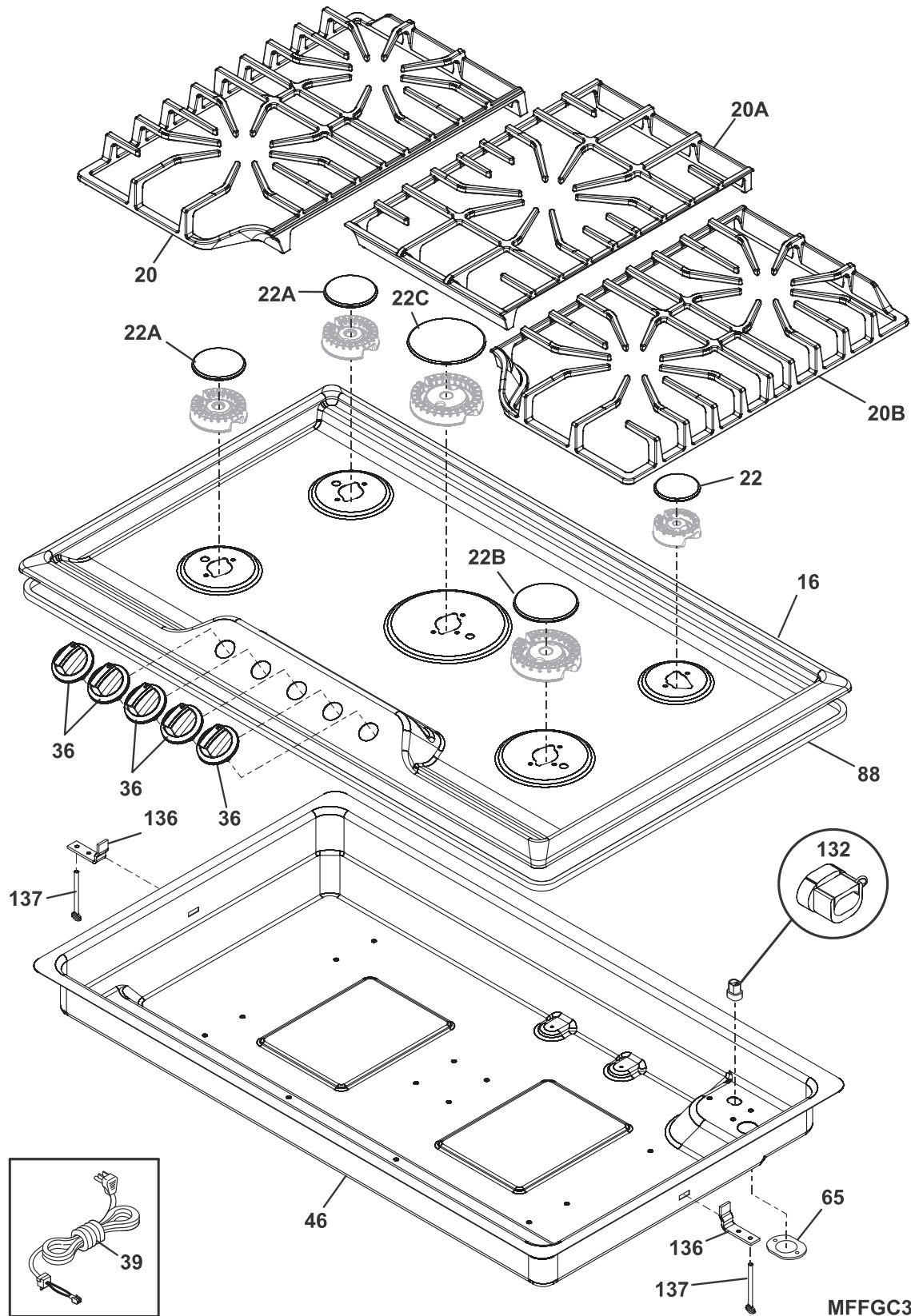
P.O. BOX 8020
CHARLOTTE, NC 28262

Publication No.
5995673182
16/02/16
(EN/SERVICE/ECL)
377

36" GAS COOK-TOP RANGE

Model No.
FFGC3626S

COOK TOP



MFFGC3626SBA

COOK TOP

Model Index: A FFGC3626S (FFGC3626SBA)
 B FFGC3626S (FFGC3626SSA)
 C FFGC3626S (FFGC3626SWA)

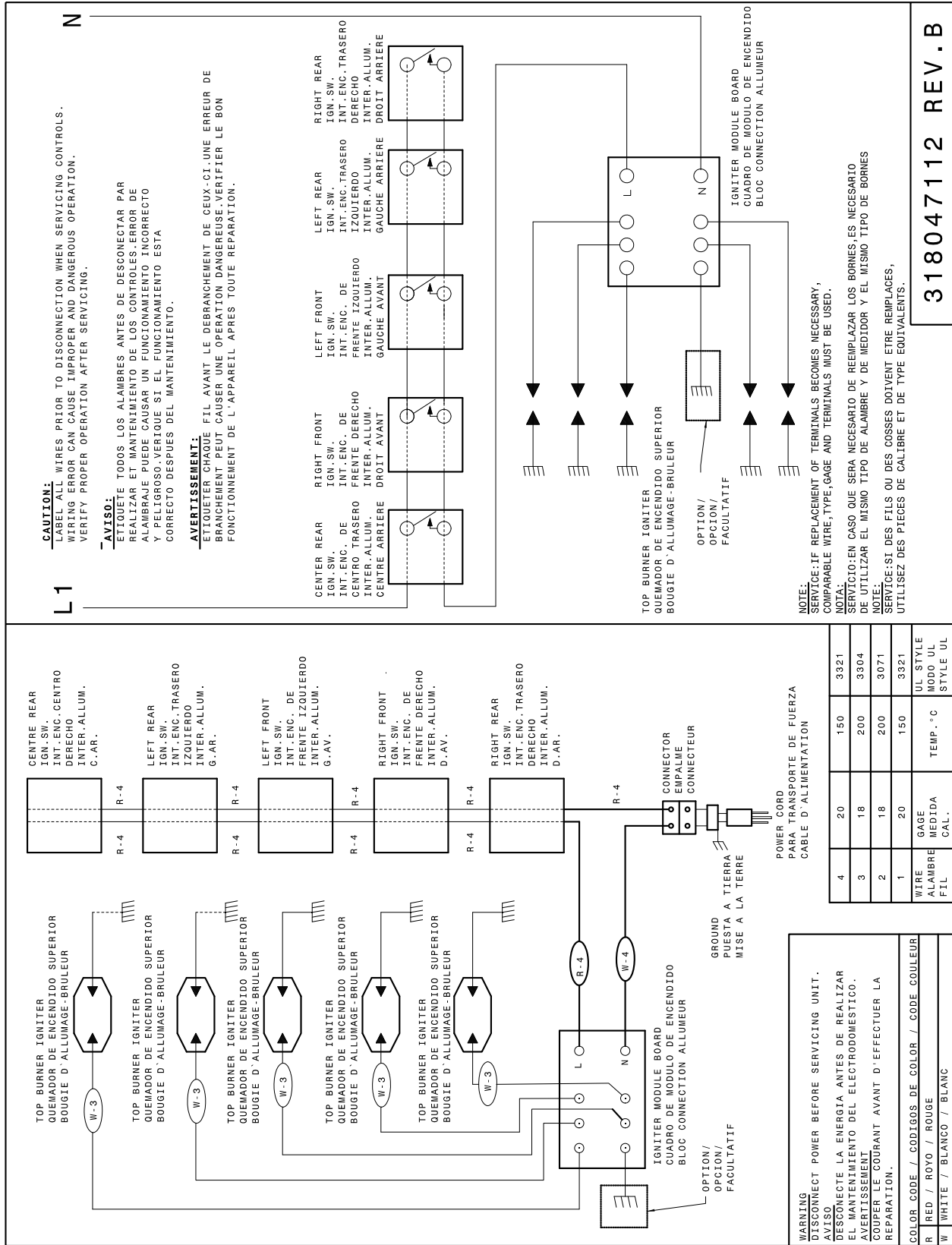
POS. NO	PART NO.		DESCRIPTION
16	809218332	A - -	Main Top, assembly, black
16	809218331	- B -	Main Top, assembly, stainless
16	809218333	- - C	Main Top, assembly, white
16*	5304500271	A - C	Insulation, main top
20	5304504845	A B C	Grate, burner, black, LH
20A	5304504844	A B C	Grate, burner, black, center
20B	5304504843	A B C	Grate, burner, black, RH
22	316261704	A B C	Cap, 5K burner, matte, black
22A	316261804	A B C	Cap, 9.5K burner, matte, black
22B	316262004	A B C	Cap, 14K burner, matte, black
22C	316262104	A B C	Cap, 17K burner, black
36	5304504838	A - -	Knob, burner, black
36	5304504839	- B -	Knob, burner, stainless
36	5304504840	- - C	Knob, burner, white
39 #	305574902	A B C	Power Cord, electrical, supply
39*	305452800	A B C	Screw, ground
46	5304498877	A B C	Burner Box
65	5303304032	A B C	Seal, rubber
88	5304498879	A B C	Gasket, main top
132	3201437	A B C	Strain relief
136	318264301	A B C	Support, box, (2)
137	305452400	A B C	Screw, lock bracket, (2)
*	305338601	A B C	Screw, (2)
*	5304472956	A B C	Screw, hex wash, 6-32 x .485
*	318163602	- B -	Cleaner, stainless steel

BURNER

Model Index: A FFGC3626S (FFGC3626SBA)
 B FFGC3626S (FFGC3626SSA)
 C FFGC3626S (FFGC3626SWA)

POS. NO	PART NO.		DESCRIPTION
1 #	5304498880	A B C	Manifold, pipe
2 #	316536009	A B C	Valve-top burner, 5K
2A #	316536000	A B C	Valve-top burner, 9.5K
2B #	316536001	A B C	Valve, top burner, 1125 BTU, blue stem
2C #	316560902	A B C	Valve, top burner, clear stem, HC
3 #	305595107	A B C	Switch Assembly, ignitor, w/harness
4	5304472956	A B C	Screw, hex wash, 6-32 x .485
8 #	318079001	A B C	Module, spark
8* #	318199780	A B C	Wiring Harness, ignitor
10 #	316438200	A B C	Burner, sealed, 5K
10A#	316558300	A B C	Burner, sealed, 9.5K
10B#	316438600	A B C	Burner, sealed, 14K
10C#	316438400	A B C	Burner, sealed, 18.2K
11 #	5304498786	A B C	Ignitor/orifice assy., top burner, 5K
11A#	5304498787	A B C	Ignitor/orifice assy., top burner, 9.5K
11B#	5304498788	A B C	Ignitor/orifice assy., top burner, 12K
11C#	5304498815	A B C	Ignitor/orifice assy., top burner, 17K
12 #	5304498881	A B C	Tube, burner, LH front
12A#	5304498882	A B C	Tube, burner, LH rear
12B#	5304498883	A B C	Tube, burner, center
12C#	5304498884	A B C	Tube, burner, RH front
12D#	5304498885	A B C	Tube, burner, RH rear
13 #	5304498886	A B C	Tubing, connector, manifold
14 #	5304498794	A B C	Regulator, control
24	318054010	A B C	Elbow, fitting
35	807164301	A B C	Bushing, insulating
44 #	5304498795	A B C	Orifice, NG 5K
44A#	5304498796	A B C	Orifice, NG 9.5K
44B#	5304498797	A B C	Orifice, NG 12K
44C#	5304498816	A B C	Orifice, NG 17K
47 #	5304504841	A B C	LP Kit, gas conversion
72	316215600	A B C	Screw, valve mtg., 1/4 - 20
77	5304498799	A B C	Bracket, ignitor/orifice, mounting
77A	5304498800	A B C	Bracket, ignitor/orifice, 5K burner, mounting
77B	5304498888	A B C	Bracket, ignitor/orifice, center burner, mounting
*	305309701	A B C	Screw, phil, 4.2 x 6.5, (20)
*	305338602	A B C	Screw, (3)

WIRING DIAGRAM



318047112 REV. B