

PERFORMANCE[®]



The new degree of comfort.[®]

PERFORMANCE[®] Power Vent gas water heaters offer up to 100 foot vent runs and the 50 and 40-Gallon Models are ENERGY STAR[®] approved

Efficiency

- .68 - .69 UEF
- ENERGY STAR[®] rated

Performance

- FHR: 78 - 86 gallons
- Recovery: Up to 42.4 GPH at a 90° F rise, depending on model

Self-Diagnostic System

- Electronic diagnostic gas control valve for improved monitoring and service



Low Emissions

- Eco-friendly burner, low NOx design

Features

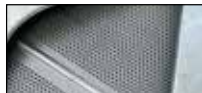
- Uses indoor air for combustion; blower exhausts the flue gases
- Standard 120 VAC electrical connection
- New whisper quiet blower

Maintenance Free Burner System

- Exclusive air/fuel shut-off device
- Maintenance free – no filter to clean
- Disables the heater in the presence of flammable vapor accumulation



Combustion Shut-off System



Flame Arrestor Plate



Maintenance Free

Flexible Venting Options

- Long venting lengths up to 100 equivalent feet
- PVC, ABS, or CPVC vent pipe options
- Vertical or horizontal termination

Longer Life

- Patented anode rod design provides long-lasting tank protection

Plus...

- Temperature and pressure relief valve included
- Low lead compliant
- Durable Silicon Nitride Ignitor (HSI)
- Standard replacement parts

Warranty

- 6-Year limited warranty for tank and parts, 1-year full in-home labor warranty*

*See written warranty for complete details

Units meet or exceed ANSI requirements and have been tested according to D.O.E. procedures. Units meet or exceed the energy efficiency requirements of NAECA, ASHRAE standard 90, ICC Code and all state energy efficiency performance criteria.



PERFORMANCE
Power Vent
40 and 50-Gallon Capacities
Up to 42,000 Btu/h



LEED Point = 1

See specifications chart on back.



The new degree of comfort.®

PERFORMANCE[®] Power Vent Specifications

Fuel Type	Description	Nominal Gallon Capacity	Rated Gallon Capacity	Model Number	Gas Input in Thous. Btu/h	Recovery in G.P.H. 90° F Rise	First Hour Delivery G.P.H.	Ht. to Top of Assembly A	Tank Height B	Diam. C	Ht. to Gas Conn. D	Water Conn. Center E	Ht. to Side T&P Valve F	Water Conn. Size G	Ship Weight (LBS)	Uniform Energy Factor (UEF)
Natural Gas	Tall	50	48	XG50T06PV42U0	42	42.4	78	66-1/2	58	21-3/4	14	8	52-1/2	3/4	170	0.68
Natural Gas	Tall	40	38	XG40T06PV40U0	40	40.4	86	67-1/2	59	19-3/4	14	8	53-1/2	3/4	140	0.69
Liquid Propane	Tall	50	48	XP50T06PV42U0	42	42.4	78	66-1/2	58	21-3/4	14	8	52-1/2	3/4	170	0.68
Liquid Propane	Tall	40	38	XP40T06PV36U0	36	36.4	67	67-1/2	59	19-3/4	14	8	53-1/2	3/4	140	0.69

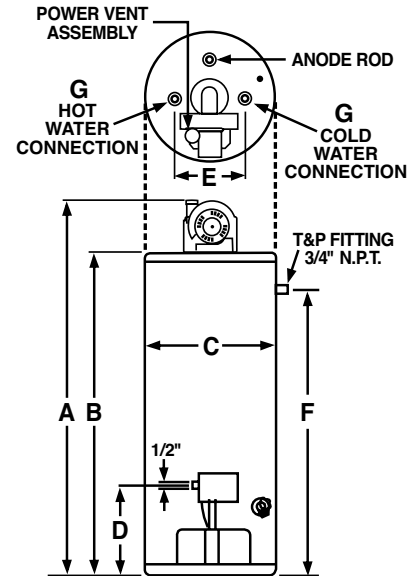
Uniform Energy Factor and rated gallon capacity based on Department of Energy (DOE) requirements.



LEED Point = 1



★ ENERGY STAR[®] compliant



Maximum and Minimum Vent Lengths for 2" Vents

NUMBER OF 90° ELBOWS WITH VENT TERMINAL	NUMBER OF 45° ELBOWS	MINIMUM PIPE LENGTH REQ. (FT.)	MAXIMUM PIPE LENGTH (FT.) 0' - 2000'	MAXIMUM PIPE LENGTH (FT.) 2000' - 7700' *
One (1)	None	4.0	44.0	24.0
One (1)	One (1)	4.0	41.0	21.0
Two (2)	None	4.0	38.0	18.0
Two (2)	One (1)	4.0	35.0	15.0
Three (3)	None	4.0	32.0	12.0

For the 2" vent, one 90° elbow is approximately equal to 6 feet of pipe.

One 45° elbow is approximately equal to 3 feet of pipe.

*2,000' - 6,000' for short models.

Maximum and Minimum Vent Lengths for 3" Vents

NUMBER OF 90° ELBOWS WITH VENT TERMINAL	NUMBER OF 45° ELBOWS	MINIMUM PIPE LENGTH REQ. (FT.)	MAXIMUM PIPE LENGTH (FT.) 0' - 2000'	MAXIMUM PIPE LENGTH (FT.) 2000' - 7700' *
One (1)	None	5.0	95.0	75.0
One (1)	One (1)	5.0	92.5	72.5
Two (2)	None	5.0	90.0	70.0
Two (2)	One (1)	5.0	87.5	67.5
Three (3)	None	5.0	85.0	65.0

For the 3" vent, one 90° elbow is approximately equal to 5 feet of pipe.

One 45° elbow is approximately equal to 2.5 feet of pipe.

*2,000' - 6,000' for short models.

In keeping with its policy of continuous progress and product improvement, Rheem reserves the right to make changes without notice.

Rheem Water Heating • 1115 Northmeadow Parkway, Suite 100
Roswell, Georgia 30076 • www.rheem.com