

Item #xxxxxxxxx  
Model #0300813A



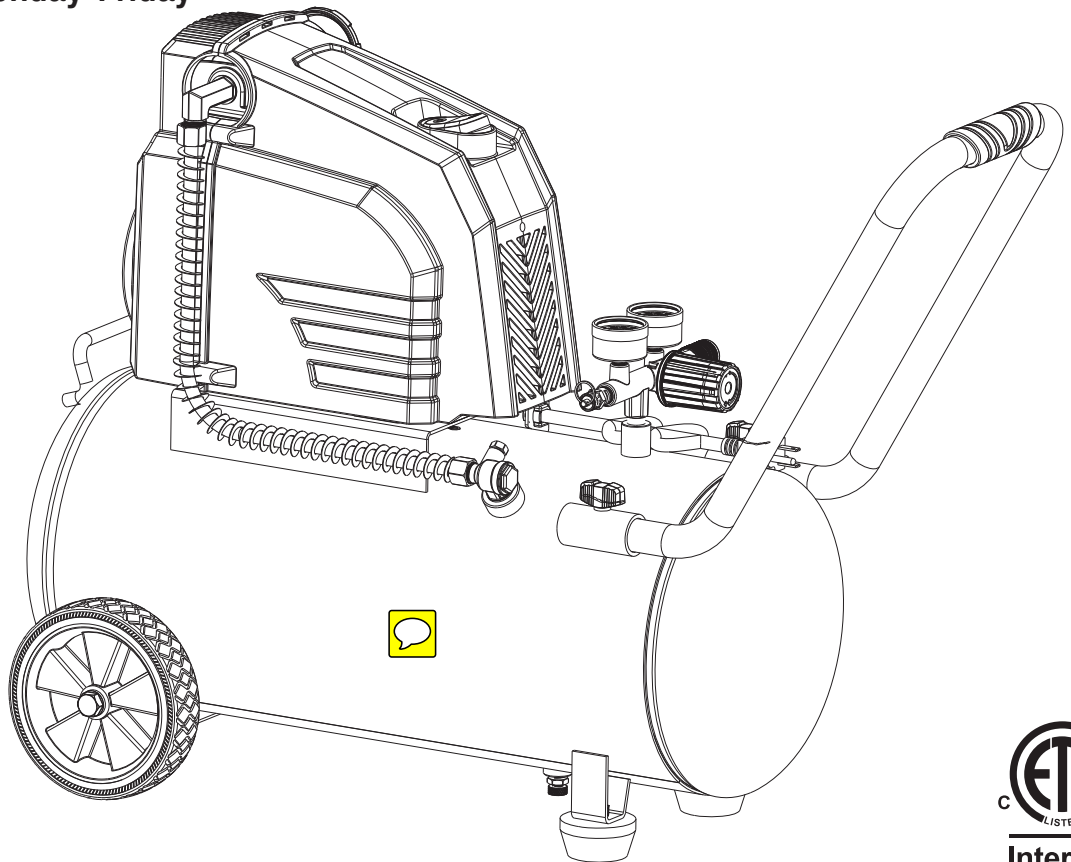
# USE AND CARE GUIDE

## 8 GALLON HOTDOG OIL FREE AIR COMPRESSOR

Questions, problems, missing parts?  
Before returning to the store, call  
Husky Customer Service  
8 a.m. - 6 p.m., EST, Monday-Friday

1-888-43-HUSKY

HUSKYTOOLS.COM



### THANK YOU

*We appreciate the trust and confidence you have placed in Husky through the purchase of this air compressor. We strive to continually create quality products designed to enhance your home. Visit us online to see our full line of products available for your home improvement needs. Thank you for choosing Husky!*

# Table of Contents

Table of Contents.....	2	Tools Required.....	6
Safety Information.....	2	Hardware Included.....	6
Work area safety.....	2	Package Contents.....	7
Personal Safety.....	2	<b>Assembly.....</b>	<b>8</b>
Air Compressor and Pneumatic Tool Safety.....	3	<b>Compressor Operation.....</b>	<b>10</b>
Electrical Safety (Extension Cords).....	3	<b>Troubleshooting.....</b>	<b>11</b>
Electrical Safety (Electrical Connection).....	4	<b>Service Parts.....</b>	<b>12</b>
Electrical Safety (Speed And Wiring).....	4	Exploded View.....	12
Electrical Safety (Grounding Instructions).....	4	Parts table.....	13
<b>Warranty.....</b>	<b>5</b>		
Husky Air Compressor Limited Two-Year Warranty.....	5		
Additional Limitations.....	5		
<b>Specifications.....</b>	<b>5</b>		
Air Compressor.....	5		
<b>Pre-Assembly.....</b>	<b>6</b>		
Packing List.....	6		

# Safety Information

## WORK AREA SAFETY

1. Keep your work area clean and well lit. Ensure floors are not slippery from wax or dust.
2. Do not operate power tools in explosive atmospheres, such as in the presence of flammable liquids, gases, or dust. Power tools create sparks which may ignite the dust or fumes. Keep bystanders, children, and visitors away while operating tools. Distractions can cause you to lose control.
3. Operate the air compressor in an open area at least 18 in. away from any wall or object that could restrict the flow of fresh air to the ventilation openings.
4. Always disconnect the air supply and power supply before making adjustments, servicing a tool, or when a tool is not in use.
5. This compressor/pump is not equipped and should not be used to supply breathing quality air. Additional equipment is necessary to properly filter and purify the air to meet minimal specifications for Grade D breathing as described in Compressed Gas Association Commodity Specification G 7.1 - 1966, OSHA 29 CF9 1910.134. Compressed Gas Association, 4221 Walney Road, Fifth Floor, Chantilly, VA 20151-2923  
(703) 788 2700, www.cganet.com.  
Any such additional equipment has not been examined and no implication of proper use for breathing air is intended or implied.

## PERSONAL SAFETY



**WARNING:** Operating any power tool can result in foreign objects being thrown into your eyes, which can result in severe eye damage. Before beginning operation, always wear safety goggles, safety glasses with side shields, or a full face shield when needed. Always use eye protection marked to comply with ANSI Z87. 1.



**WARNING:** This product contains chemicals known to the State of California to cause cancer and birth defects or other reproductive harm. Wash hands after handling.

1. Use safety equipment. Always wear eye protection with side shields when operating power tools. A dust mask, nonskid safety shoes, a hard hat, or hearing protection must be used for appropriate conditions.
2. Stay alert when operating a power tool. Do not use the tool while tired or under the influence of drugs, alcohol, or medication.
3. Do not wear loose clothing or jewelry. Contain long hair. Keep your hair, clothing, and gloves away from moving parts. Loose clothes, jewelry, or long hair can be caught in moving parts.
4. Keep proper footing and balance at all times. Proper footing and balance enables better control of the tool in unexpected situations.
5. Do not use on a ladder or unstable support.

# Safety Information (continued)

## AIR COMPRESSOR AND PNEUMATIC TOOL SAFETY



**WARNING:** Do not attempt to modify this tool or create accessories not recommended for use with this tool. Any such alteration or modification is misuse and could result in a hazardous condition leading to possible serious personal injury.



**CAUTION:** Do not use in an environment that is dusty or otherwise contaminated. Using the air compressor in this type of environment may cause damage to the unit.

1. Keep compressors as far from the spraying area as possible, at least 15 ft. from the spraying area and all explosive vapors.
2. Risk of bursting. Do not adjust the regulator to result in output pressure greater than the marked maximum pressure of the attachment. Do not use at pressure greater than the rated maximum pressure of this compressor.
3. If connected to a circuit protected by fuses, use time-delay fuses with this product.
4. To reduce the risk of electric shock, do not expose to rain. Store indoors.
5. Ensure the hose is free of obstructions or snags. Entangled or snarled hoses can cause loss of balance or footing and may become damaged.
6. Use the air compressor only for its intended use. Do not alter or modify the unit from the original design or function. Never weld or drill holes in the air tank.
7. Never leave a tool unattended with the air hose attached.
8. Do not operate this tool if it does not contain a legible warning label.
9. Do not continue to use a tool or hose that leaks air or does not function properly.
10. Do not attempt to pull or carry the air compressor by the hose.
11. Your tool may require more air consumption than this air compressor is capable of providing.
12. Never direct a jet of compressed air toward people or animals.
13. Protect your lungs. Wear a face or dust mask if the operation is dusty.
14. Do not use this air compressor to spray chemicals. Your lungs can be damaged by inhaling toxic fumes. A respirator may be necessary in dusty environments or when spraying paint.
15. Do not use this compressor if any parts have been exposed to water.

## ELECTRICAL SAFETY

1. Avoid body contact with grounded surfaces such as pipes, radiators, ranges, and refrigerators. There is an increased risk of electric shock if your body is grounded.
2. Do not expose power tools to rain or wet conditions. Water entering a power tool will increase the risk of electric shock.
3. Do not abuse the cord. Never use the cord to carry the tool or pull the plug from an outlet. Keep the cord away from heat, oil, sharp edges, and moving parts.
4. Replace damaged cords immediately. Damaged cords increase the risk of electric shock.

## ELECTRICAL SAFETY (EXTENSION CORDS)



**WARNING:** Keep the extension cord clear of the working area. Position the cord so that it will not get caught on lumber, tools, or other obstructions while you are working with a power tool. Failure to do so can result in serious personal injury.



**WARNING:** Check extension cords before each use. If damaged, replace immediately. Never use the air compressor with a damaged cord since touching the damaged area could cause electrical shock resulting in serious personal injury.



**WARNING:** Improperly connecting the equipment-grounding conductor can result in a risk of electrical shock.

1. Use only 3-wire extension cords that have 3-prong grounding plugs and 3-pole receptacles that accept the air compressor's plug.
2. When using the air compressor at a considerable distance from the power source, use an extension cord heavy enough to carry the current that the compressor will draw. An undersized extension cord will cause a drop in line voltage, resulting in a loss of power and causing the motor to overheat. Use the following chart to determine the minimum wire size required in an extension cord.
3. Only use 50 ft. or less round jacketed cords listed by Underwriter's Laboratories (UL).
4. When operating a power tool outside, use an outdoor extension cord marked "w-A" or "w". These cords are rated for outdoor use and reduce the risk of electric shock.

# Safety Information (continued)

## ELECTRICAL SAFETY (EXTENSION CORDS) (CONTINUED)

Ampere rating (on air compressor data plate)						
	0– 2.0	2.1– 3.4	3.5– 5.0	5.1– 7.0	7.1– 12.0	12.1– 16.0
Cord Length	Wire Size (A.W.G)					
25 ft.	16	16	16	16	14	14
50 ft.	16	16	16	14	14	12
100 ft.	16	16	14	12	10	–
Used in 12 gauge – 20 amp circuit.						



**NOTE:** Use longer air hoses instead of long extension cords. Your air compressor will run better and last longer.

## ELECTRICAL SAFETY (ELECTRICAL CONNECTION)

1. This air compressor is powered by a precision built electric motor. It should be connected to a power supply that is 120 volts, 60 Hz, AC only (normal household current).
2. Do not operate this tool on direct current (DC). A substantial voltage drop will cause a loss of power and the motor will overheat. If the air compressor does not operate when plugged into an outlet, double check the power supply.

## ELECTRICAL SAFETY (SPEED AND WIRING)

1. The no-load speed of the electric motor varies by model and specification. The motor speed is not constant and decreases under a load or with lower voltage. For voltage, the wiring in a shop is as important as the motor's horsepower rating.
2. A line intended only for lights cannot properly carry a power tool motor. Wire that is heavy enough for a short distance will be too light for a greater distance. A line that can

support one power tool may not be able to support two or three tools.

## ELECTRICAL SAFETY (GROUNDING INSTRUCTIONS)

1. This product must be grounded. In the event of an electrical short circuit, grounding reduces the risk of electric shock by providing an escape wire for the electric current. This air compressor is equipped with an electric cord having an equipment-grounding conductor and a grounding plug. The plug must be plugged into a matching outlet that is properly installed and grounded in accordance with all local codes and ordinances
2. Do not modify the plug provided. If it will not fit the outlet, have the proper outlet installed by a qualified electrician.
3. The conductor with insulation having an outer surface that is green with or without yellow stripes is the equipment grounding conductor. If repair or replacement of the electric cord or plug is necessary, do not connect the equipment grounding conductor to a live terminal.
4. Check with a qualified electrician or service personnel if you do not completely understand the grounding instructions, or if you are in doubt as to whether the tool is properly grounded. This product is for use on a nominal 120-V. Do not use an adapter with this product.

# Warranty

## HUSKY AIR COMPRESSOR LIMITED TWO-YEAR WARRANTY

This warranty covers defects in workmanship or materials in this Husky air compressor for the two-year period from the date of purchase. This warranty is specific to this air compressor model. Warranties for other Husky products may vary. This warranty applies only to the original retail purchaser and may not be transferred. This warranty does not cover normal wear and tear or any malfunction, failure or defect resulting from misuse, abuse, neglect, alteration, modifications or repair by other than a service center authorized to repair Husky branded air compressors. Expendable materials, such as motor brushes, seals, etc. are not covered by this warranty. This warranty does not apply to this compressor used in industrial applications or for rental purposes. Husky makes no warranties, representations, or promises as to the quality or performance of its air compressors other than those specifically stated in this warranty.

## ADDITIONAL LIMITATIONS

To the extent permitted by applicable law, all implied warranties, including warranties of merchantability or fitness for a particular purpose, are disclaimed. Any implied warranties, including warranties of merchantability or fitness for a particular purpose, that cannot be disclaimed under state law are limited to two years from the date of purchase. Husky is not responsible for direct, indirect, incidental, special or consequential damages. If this air compressor is used for commercial purposes, the warranty will apply for ninety (90) days from the date of purchase. Some states do not allow limitations on how long an implied warranty lasts and/or do not allow the exclusion or limitation of incidental or consequential damages, so the above limitations may not apply to you. This warranty gives you specific legal rights, and you may also have other rights, which vary from state to state.

Contact the Customer Service Team at 1-888-43-HUSKY or visit [www.HomeDepot.com](http://www.HomeDepot.com).

# Specifications

## AIR COMPRESSOR

<b>Running horsepower</b>	1.8 HP
<b>Air tank capacity</b>	8 gal.
<b>Air pressure</b>	135 PSI max.
<b>Air delivery</b>	4.8 SCFM at 40 PSI 3.7 SCFM at 90PSI
<b>Input</b>	120 V. 60 Hz. AC only. 12 Amps.
<b>Net weight</b>	xxx lbs.

# Pre-Assembly

## PACKING LIST

Before assembling and operating this air compressor, ensure the following items are identified in the packaging:

- Air compressor
- Air filter (L)
- Wheel assembly package (includes 2 wheels (A), 2 shoulder bolts (AA), 2 nuts (BB), and 2 lock washers (CC))
- Handle assembly package (includes 1 Handle (A), 4 flat washers (DD))

## TOOLS REQUIRED



Safety goggles

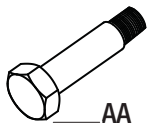


17 mm Wrench

## HARDWARE INCLUDED



NOTE: Hardware not shown to actual size.



AA



BB



CC

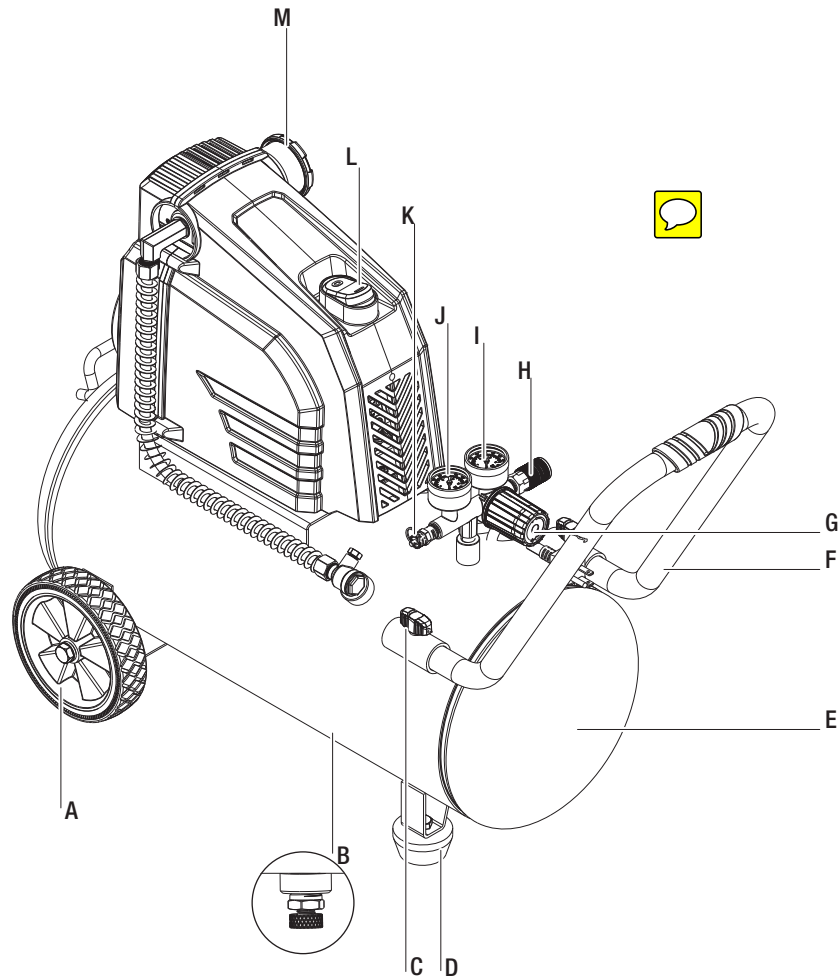


DD

Part	Description	Quantity
AA	10 mm shoulder bolt	2
BB	10 mm nut	2
CC	Lock washer	2
DD	washer $\Phi 10$	4

# Pre-Assembly (continued)

## PACKAGE CONTENTS



Part	Description	Quantity
A	Wheel	2
B	Drain valve	1
C	Thumbscrews	2
D	Rubber foot	2
E	Tank	1
F	Handle	1
G	Pressure regulator knob	1
H	Quick coupler	1
I	Regulator pressure gauge	1
J	Tank pressure gauge	1
K	Safety valve	1
L	Switch	1
M	Air filter	1



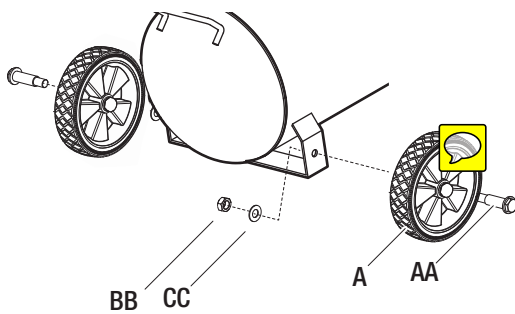
# Assembly

## 1 Assembling the wheels

With the offset hub of a wheel (A) facing the tank's wheel bracket, assemble a 10 mm shoulder bolt (AA) through the holes in the wheel and tank wheel bracket.

Place a lock washer (CC) onto the threaded end of the shoulder bolt (AA). Then, place a 10 mm nut (BB) on the threaded end of the bolt (AA) and tighten securely.

Repeat for the other wheel (A).

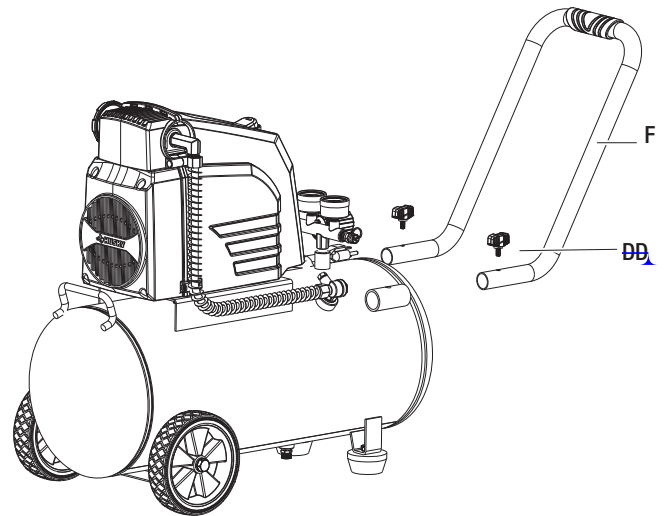


## 2 Assembling the handle

Insert the two open ends of the handle (F) into the handle brackets on the air compressor tank.

Align the holes in the handle bracket with the threaded holes in the handle (F).

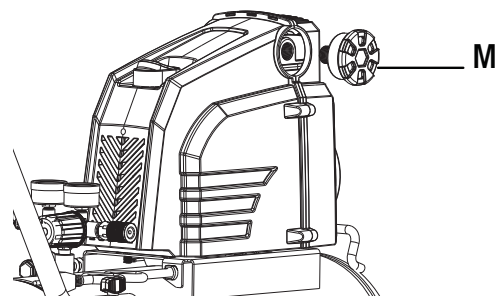
Attach the handle (F) to both sides of the air compressor using ~~washer~~  $\phi 10$  (BB). Tighten securely.



## 3 Attaching the air filter

Insert the threaded end of the air filter (M) into the threaded port of the pump head. Do not apply thread tape to the air filter assembly's threads.

Rotate clockwise to tighten. Hand tighten only.





# Assembly

## 4 Breaking in the pump

Check and tighten all bolts and fittings.

Open the air flow by turning the pressure regulator knob (G) fully clockwise.

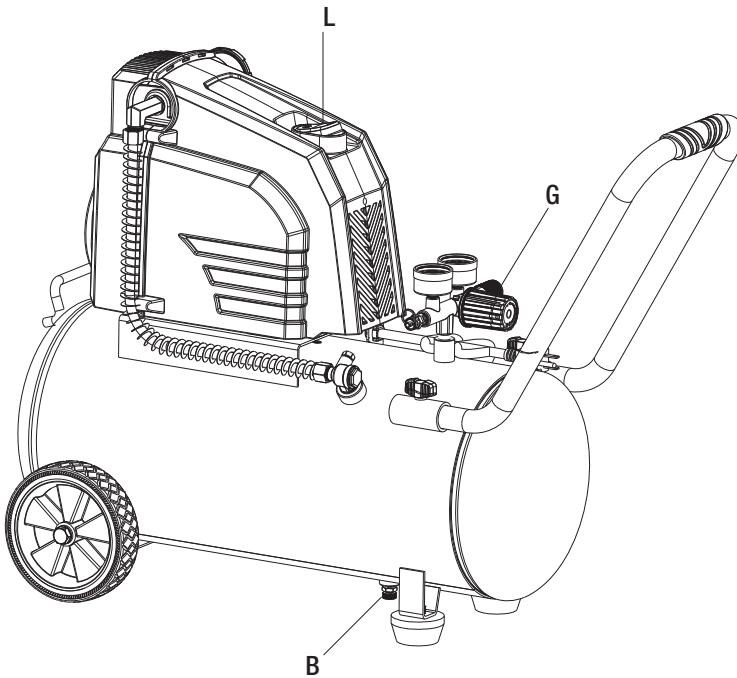
Place the ~~AUTO/OFF~~ switch (L) in the OFF position and plug in the power cord.

Open the drain valve (B).

Place the ~~AUTO/OFF~~ switch (B) in the ON position and run the air compressor for 10 minutes.

Place the ~~AUTO/OFF~~ switch (L) in the OFF position.

Close the drain valve (B).



# Compressor Operation

## 1 Draining the tank

Turn off the compressor.

Pull the safety valve pull ring (K) to remove all air pressure from the tank. Continue to hold the safety valve open until both pressure gauges show 0 PSI. Next, unplug the air compressor from the power source.

Position a suitable container below the drain valve.

Fully open the drain valve (B).

Keep the compressor tilted until all moisture has been removed.

If the drain valve (B) is clogged, unplug the compressor and pull the drain valve (B) to remove all air pressure. Remove and clean the drain valve (B) and then reinstall it. Apply sealant tape (not included) to the threads of the drain valve (B) to reduce the likelihood of air leaks.

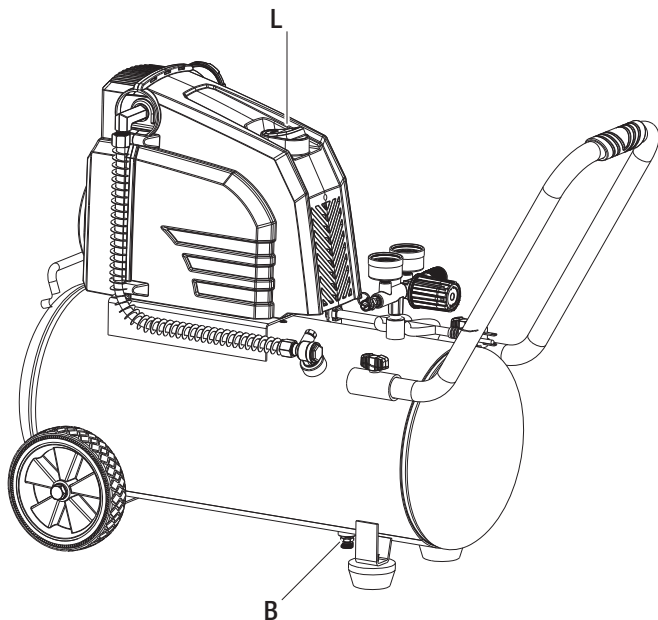
Completely close the drain valve (B).



**WARNING:** Failure to unplug the air compressor and depressurize the tank before removing the valve may cause serious personal injury.



**NOTE:** Because condensate is a pollutant, dispose of it in compliance with local regulations.



## 2 Checking the safety valve

Turn on the air compressor and wait for the tank to fill. The compressor automatically shuts off when the pressure reaches the preset maximum.

Turn off the air compressor.

Pull the ring on the safety valve (K) for 20 seconds to release the air.

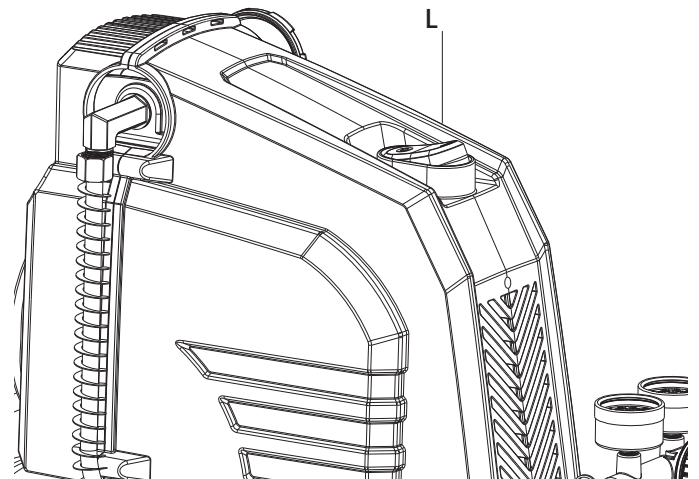
Release the ring. Air stops escaping at approximately 40-100 PSI. If the safety valve does not reset stop discharging air between 40-100 PSI, discontinue use and seek service before using the air compressor again.



**DANGER:** Do not tamper with the safety valve. Items loosened from this device could fly up and hit you. Failure to heed this warning could result in death or serious personal injury. The safety valve automatically releases air when the receiver pressure exceeds the preset maximum. Check the valve.



**WARNING:** Air leaks after releasing the safety valve ring or if the valve is stuck. Do not use the air compressor until the safety valve has been replaced. Using the air compressor in this condition could result in serious personal injury.

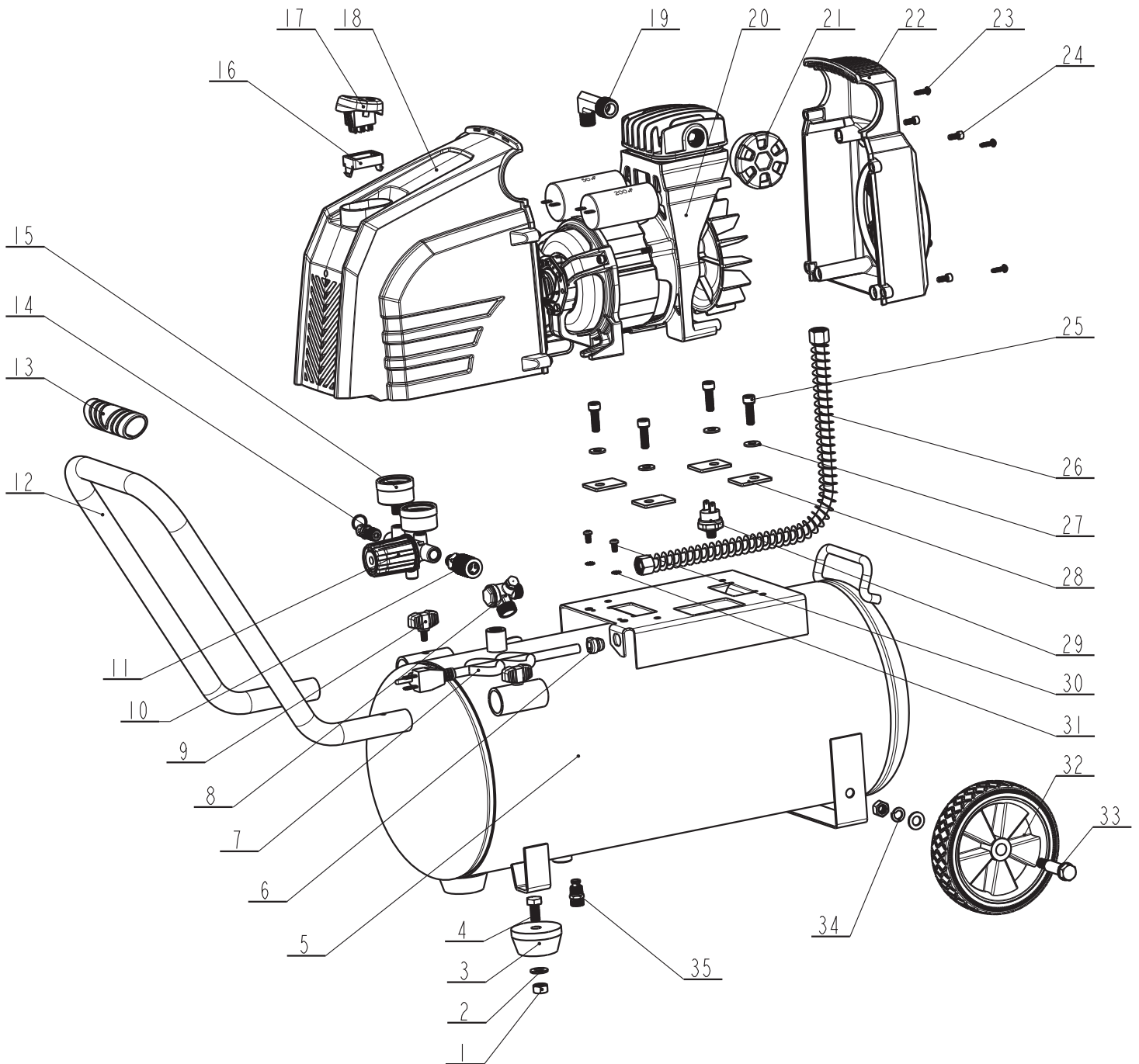


# Troubleshooting

Problem	Possible Cause	Solution
The compressor will not run.	There is loss of power or overheating. There is no electrical power. There is a blown shop/house fuse. The shop/house breaker tripped or the pressure switch is bad. The tank is full of air. The overload protector tripped.	Check the proper use of the extension cord. Check to make sure the unit is plugged in. Check the fuse/breaker or motor overload. Reset the shop/house breaker and determine why the problem happened. Take the compressor to a service center. The compressor will turn on when the tank pressure drops to cut-in. Check the voltage from the outlet. The outside air or room temperature is too high. The extension cord is too long or wrong gauge wire used.
The motor hums but cannot run or runs slowly.	The voltage is low. Wrong gauge wire or length of extension cord. There is shorted or open motor winding. There is a defective check valve or unloader.	Call an electrician or check with meter. Check for proper gauge wire and cord length. Take the compressor to a service center. Remove the extension cord and plug directly into the wall outlet. If the issue is corrected, refer to chart on page 4 for proper gauge and length extension cords.
The fuses blow/circuit breaker trips repeatedly.	The fuse size is incorrect, or there is a circuit overload. Wrong gauge wire or length of extension cord. There is a defective check valve or unloader.	Check for proper fuse, use a time-delay fuse, disconnect other electrical appliances from the circuit or operate the compressor on its own branch circuit. Check for proper gauge wire and cord length. Take the compressor to a service center.
The Push Button Overload protector cuts out repeatedly.	The voltage is low. There is a lack of proper ventilation or the room temperature is too high. Wrong gauge wire or length of extension cord.	Call an electrician or check with meter. Move the compressor to a well-ventilated area. Check for proper gauge wire and cord length.
The air receiver pressure drops when the compressor shuts off.	There are loose connections (fittings, tubing, etc.) The drain valve is loose. The check valve is leaking.	Check all connections with a soap and water solution and tighten. Tighten the drain valve. Take the compressor to a service center.
There is excessive moisture in the discharge air.	There is excessive water in the air tank. The humidity is high.	Drain the tank. Move to an area with less humidity and use an airline filler.
The compressor runs continuously.	There is a defective pressure switch. There is excessive air usage.	Take the compressor to a service center. Decrease air usage. The compressor is not large enough for tool's requirement.
The compressor vibrates.	There are loose mounting bolts.	Tighten the mounting bolts.
The air output is lower than normal.	There are broken inlet valves. The connections are leaking.	Take the compressor to a service center. Tighten connections.

# Service Parts

## EXPLODED VIEW



## Service Parts (continued)

### PARTS TABLE

Part	Description	Qty
1	Nut, hex head M10	4
2	Washer , flat $\Phi$ 10	4
3	Rubber pad	2
4	Nut, hex head M10x20	2
5	Tank, 8gal	1
6	Core ends	1
7	Power cord	1
8	Check valve	1
9	Knob	2
10	Quick coupler	1
11	Regulator assy	1
12	Handle	1
13	Handgrip	1
14	Safety valve	1
15	Pressure gauge	2
16	Switch ferrule	1
17	Switch assy	1
18	Front shroud	1

Part	Description	Qty
19	Elbow bend	1
20	Motor pump assy	1
21	Air filter	1
22	Back shroud	1
23	Screw ST3.9x14	4
24	Screw M5x12	4
25	Screw M8x25	4
26	Aluminium tube assy	1
27	Washer , flat $\Phi$ 8	4
28	Shock pad	4
29	Pressure switch	1
30	Screw M5x10	2
31	Washer $\Phi$ 10	2
32	Wheels assy	2
33	Shoulder bolt	2
34	Washer $\Phi$ 10	2
35	Drain valve	1



Questions, problems, missing parts? Before returning to the store,  
call Husky Customer Service  
8 a.m. - 6 p.m., EST, Monday-Friday

**1-888-43-HUSKY**

**HUSKYTOOLS.COM**

Retain this manual for future use.