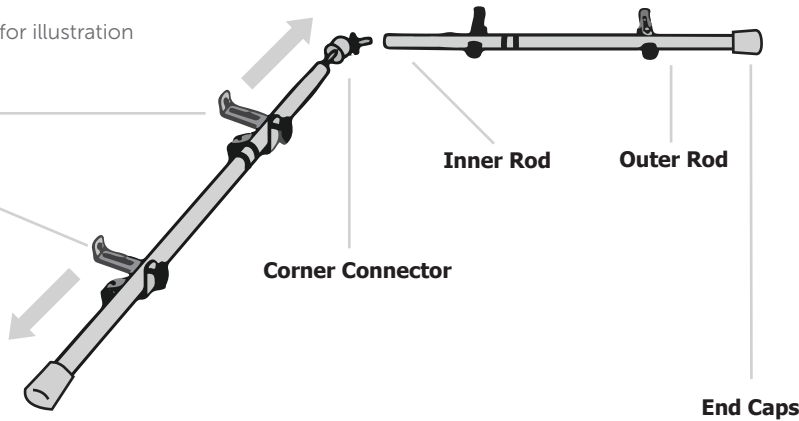


# INSTALLATION INSTRUCTIONS FOR CORNER WINDOW ROD SET

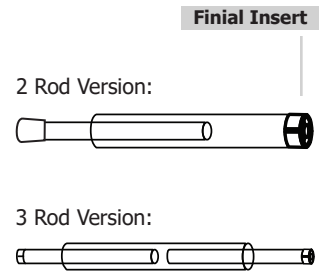
## Single Rod

NOTE: Finials shown are for illustration purposes only.

**Brackets:** Align & mount outer and inner rods, they will serve to "lock" curtains in place when sliding.

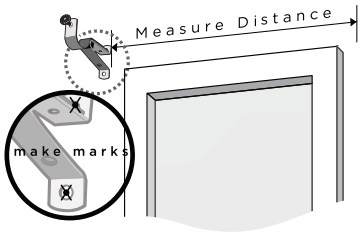


Ensure that the rods are assembled as shown below:



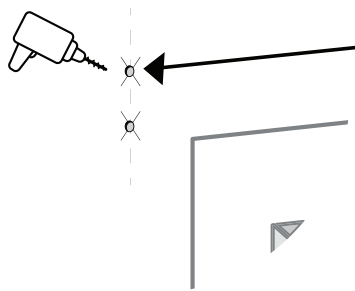
**1**

Place brackets against wall at desired locations. Mark screw holes with pencil. Be sure marks are level across opening. **Mount at least one bracket on each inner rod and outer rod to prevent rod movement when sliding curtains.**



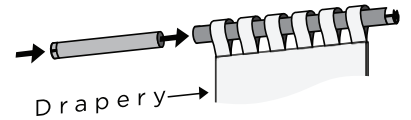
**2**

If screws are going directly into wood trim or wall studs, drill a 1/8" pilot hole at pencil marks. If screwing into drywall, follow drywall anchor instruction at the bottom of the page.



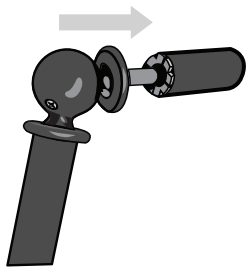
**3**

When ready, slide drapery onto the pole.



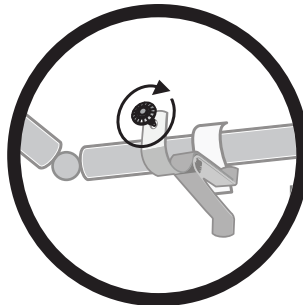
**4**

Insert the rod connector to one rod and loosen the connector tightening screw. Adjust connector to desired angles. Tighten screw on the connector to lock angle in place. Slide the other rod onto the open end of rod connector.



**5**

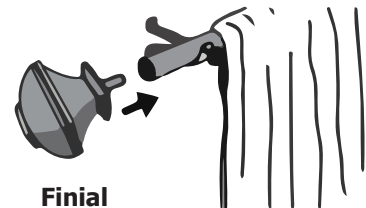
Hang the completed assembly by loosening the brackets front adjustment screws and dropping the rods in. Once hung, tighten both the brackets tightening screws and the connector tightening screws.



**6**

### Attaching Finials (Optional)

Install finials by removing end caps (if there is any) from rods and sliding the finial posts into the rod insert adapters.



## DRYWALL ANCHOR INSTALLATION



If screws are going directly into wood trim or wall studs - drill 1/8" (3mm) holes and install screws through bracket. If screws are going into hollow wall - drill 3/16" (5mm) holes and push or lightly hammer plastic anchors into holes. Then install screws through brackets. Do not tighten screws too much - just snug is best.