

# FIRTANA-20X

20" HIGH VELOCITY FLOOR FAN   
POWERFUL • QUIET • 3-SPEED • 360° VERTICAL TILT

## OWNER'S MANUAL

### READ AND SAVE THESE INSTRUCTIONS

#### SAFETY INFORMATION:

##### WARNING

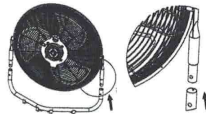
1. UNPLUG THE FAN BEFORE MOVING IT OR PERFORMING MAINTENANCE. DO NOT TOUCH THE FAN WHEN YOUR HANDS ARE WET.
2. THOSE WHO ARE NOT QUALIFIED ELECTRICIANS SHOULD NOT DISASSEMBLE, REPAIR OR REBUILD THE FAN.
3. UNPLUG THE FAN WHEN IT IS NOT IN USE.
4. DO NOT UNPLUG THE FAN BY HOLDING THE CABLE CORD. UNPLUG BY HOLDING THE PLUG.
5. DO NOT USE THE FAN WHEN THERE IS DAMAGE TO THE CABLE CORD OR PLUG.
6. DO NOT USE THE FAN WITH EXTENSION CORD.
7. DO NOT USE THE FAN CLOSE TO THE FIRES.
8. DO NOT INSERT YOUR HAND OR OTHER OBJECTS INTO THE GUARD OR THE MOVABLE PARTS.
9. TO REDUCE THE RISK OF FIRE OR ELECTRIC SHOCK, DO NOT USE THIS FAN WITH ANY SOLID-STATE SPEED CONTROL DEVICE.
10. IF THE SUPPLY CORD IS DAMAGED, IT HAS TO BE REPLACED BY THE MANUFACTURER, ITS SERVICE AGENT OR SIMILARLY QUALIFIED PERSONS IN ORDER TO AVOID HAZARD.
11. DO NOT USE THIS FAN OUTDOOR.

##### CARE AND MAINTENANCE

UNPLUG THE APPLIANCE BEFORE CLEANING. DON'T USE ANY WATER FOR CLEANING METAL SURFACES. SLIGHTLY MOISTEN A CLOTH AND THEN WIPE OFF THE SURFACES OF THE FAN. IN ORDER TO REMOVE THE DUST FROM THE GRILL, USE A VACUUM CLEANER OR REMOVE THE FRONT GRILL BY REMOVING THE SECURING SCREW ON THE EDGE OF THE GRILL WITH A SCREWDRIVER. AFTER CLEANING, REMOUNT THE GRILL. AFTER DOING THIS, FASTEN THE SECURING SCREW ON THE EDGE OF THE GRILL.

##### ASSEMBLY INSTRUCTIONS

1. PRESS THE BUTTON ON THE BASE
2. INSERT THE FAN INTO THE BRACKET UNTIL THE BUTTON POP-UP FROM THE HOLE



##### OPERATING INSTRUCTIONS

1. PLACE THE FAN ON A SAFE, FLAT SURFACE WHERE IT CAN NOT FALL OR BE PULLED BY THE CORD.
2. SELECT DESIRED DIRECTION OF AIR FLOW BY TILTING THE FAN GRILL UPWARD OR DOWNWARD.
3. PLUG UNIT INTO ELECTRICAL OUTLET.
4. SELECT PREFERRED SPEED (1-LOW, 2-MED., 3-HIGH) BY ROTATING THE SWITCH ON THE BACK OF THE UNIT.
5. ALWAYS TURN OFF (0-OFF) AND UNPLUG FAN AFTER USING.

##### CAUTION

1. UNPLUG THE FAN FROM THE SOCKET AND CLEAN IT WITH A SOFT CLOTH
2. DO NOT IMMERSE THE FAN.
3. FIT THE GUARD ONTO FAN BEFORE STARTING UP THE FAN.
4. THIS FAN IS NOT INTENDED FOR USE BY PEOPLE (INCLUDING CHILDREN) WITH REDUCED PHYSICAL, SENSORY OR MENTAL CAPABILITIES OR LACK OF EXPERIENCE AND KNOWLEDGE UNLESS THEY HAVE BEEN GIVEN SUPERVISION OR INSTRUCTION CONCERNING USE OF THE FAN BY A PERSON RESPONSIBLE FOR THEIR SAFETY. SUPERVISE CHILDREN TO ENSURE THEY DO NOT PLAY WITH THE FAN.

##### SPECIFICATIONS:

Voltage	120V
Amperage	1.35A
Wattage	157W
Speeds	3
RPM	1507/1360/1253
Airflow	4650 CFM
Cord	1&AWG, 5FT
Housing	Metal
Size	23.8"x22.3"x6"
Net Weight	11 LBS
Gross Weight	13 LBS
Warranty	1 Year

  
**soleaire**<sup>®</sup>

Azusa, California  
SoleaireUSA.com