

Quick Start Guide

45-0526 Push Spreader

Read the manual that came with your Push Spreader for:

- Important safety warnings
- Further explanation of features
- Operating instructions and flow control adjustments

Problem?
Call 1-800-448-9282



Quick Start Guide

45-0526 Push Spreader

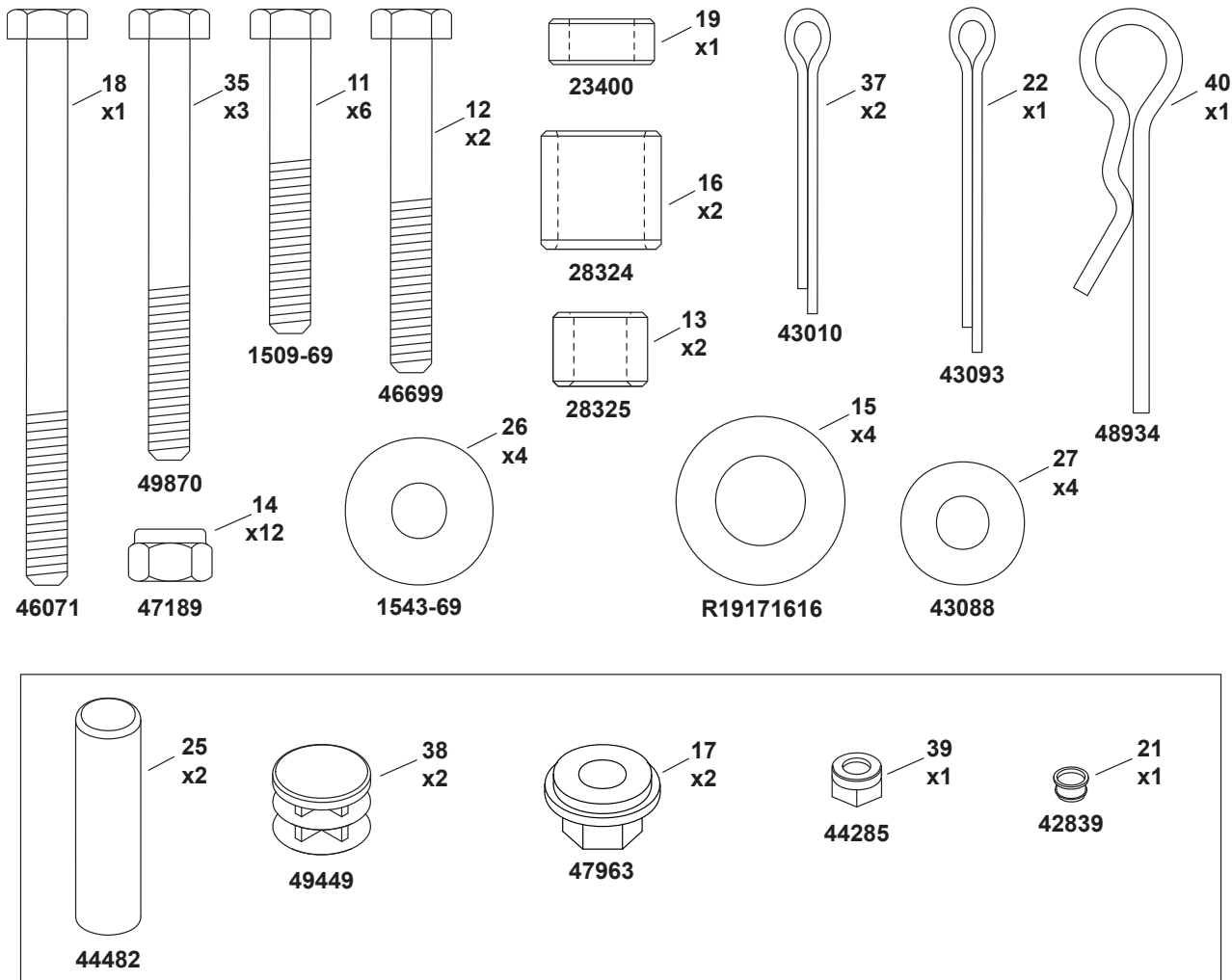
Read the manual that came with your Push Spreader for:

- Important safety warnings
- Further explanation of features
- Operating instructions and flow control adjustments

Problem?
Call 1-800-448-9282



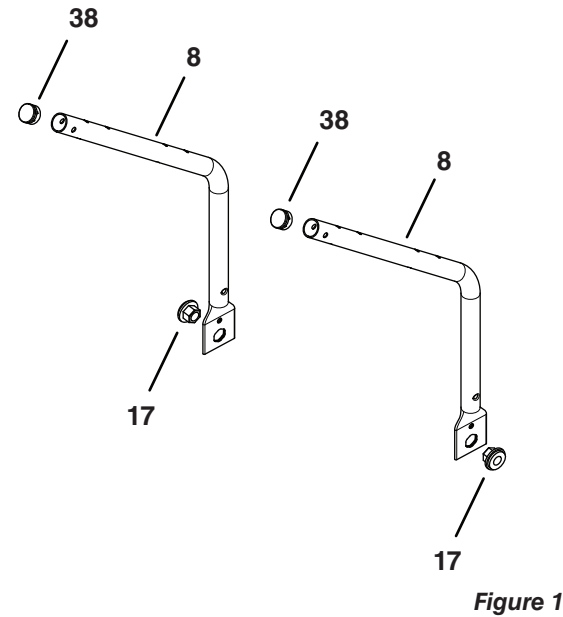
HARDWARE PACKAGE



IMPORTANT: To avoid assembly difficulties, **DO NOT TIGHTEN** bolts until STEP 9 unless otherwise instructed. If you have difficulty assembling parts, the bolts may need to be loosened.

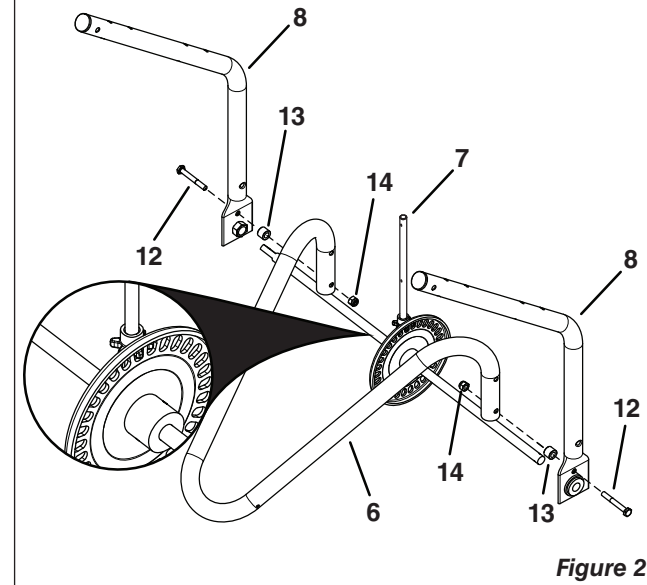
STEP 1: (SEE FIGURE 1)

- Insert plugs (38) into the ends of the hopper support tubes (8).
- Insert hex flange bearings (17) into the holes in the hopper support tubes (8) as shown below



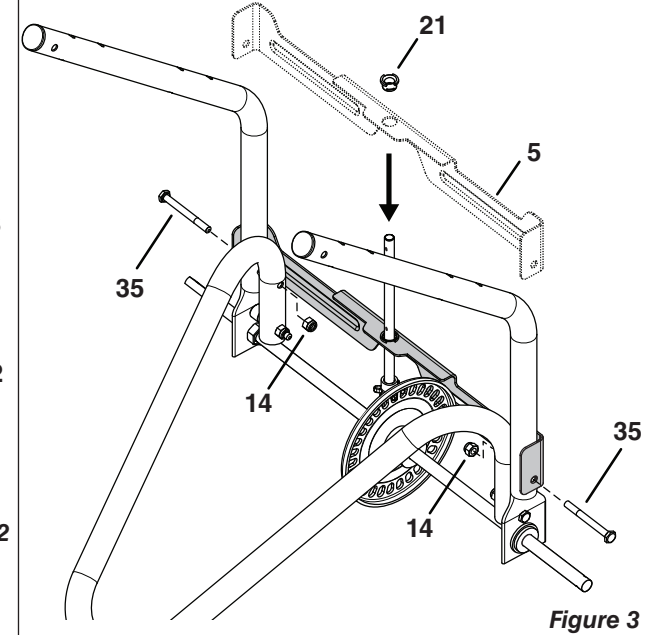
STEP 2: (SEE FIGURE 2)

- Assemble the axle/gear assembly and hopper support tubes (8) to the stand tube (6) as shown using two 1/4" x 2" hex bolts (12), spacers (13), and 1/4" nylock nuts (14). **Do not tighten completely.**



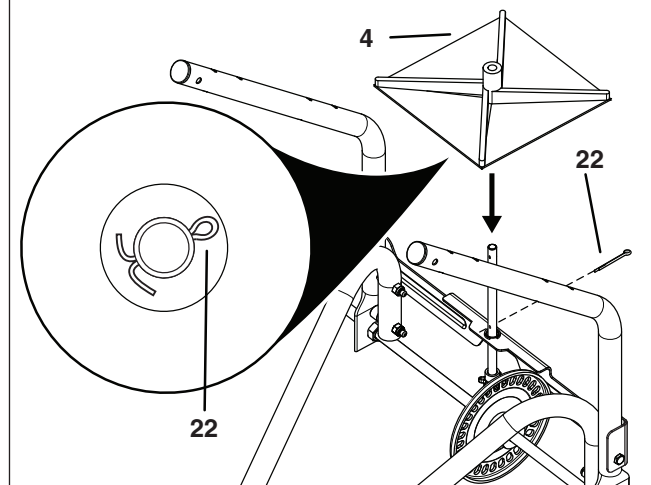
STEP 3: (SEE FIGURE 3)

- Slide the cross brace (5) onto the spreader shaft.
- Insert the bushing (21) into the cross brace (5).
- Attach the cross brace to the hopper support tubes using two 1/4" x 2-1/2" hex bolts (35) and 1/4" nylock nuts (14). **Do not tighten completely.**



STEP 4: (SEE FIGURE 4)

- Slide the spreader impeller (4) onto the spreader shaft and secure it with a 1/8" x 1-1/2" cotter pin (22) making sure to spread the ends of the cotter pin.



STEP 5: (SEE FIGURE 5)

- Slide a spacer (16), a 1/2" washer (15), and the drive wheel (9) onto the square end of the axle.
- Slide a 1/2" washer (15) over the axle and secure the wheel with a 1/8 x 1-1/4" cotter pin (37), spreading the ends.

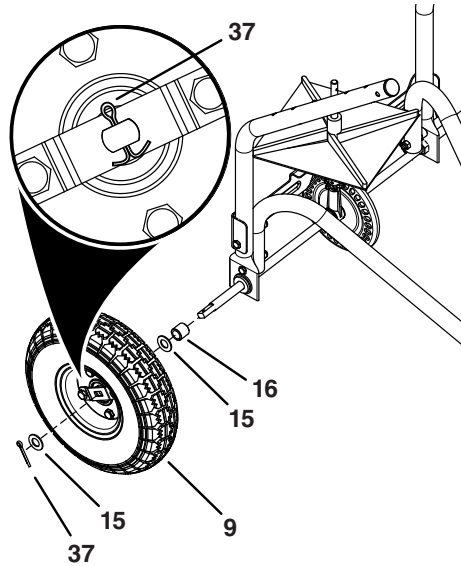


Figure 5

STEP 6: (SEE FIGURE 6)

- Slide a spacer (16), a 1/2" washer (15), and a wheel (10) onto the round end of the axle.
- Slide a 1/2" washer (15) over the axle and secure the wheel with a 1/8 x 1-1/4" cotter pin (37), spreading the ends.

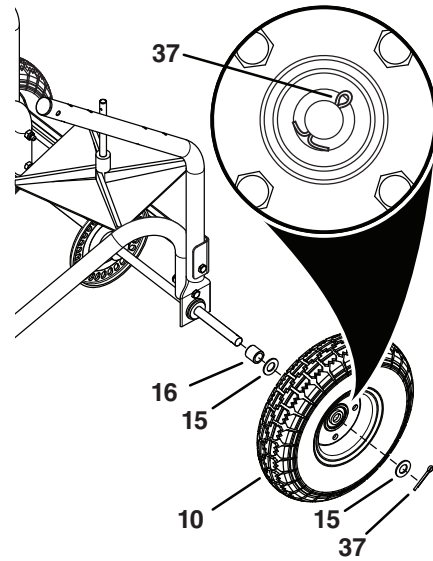


Figure 6

STEP 7: (SEE FIGURE 7)

- Place the hopper on the hopper support tubes, inserting the spreader shaft through the square hole in the bottom of the hopper.
- Slide the hopper bushing (39) onto the spreader shaft and insert it into the bottom of the hopper.
- Slide the spacer (19) onto the spreader shaft.
- Install the agitator hairpin (40) in the spreader shaft.

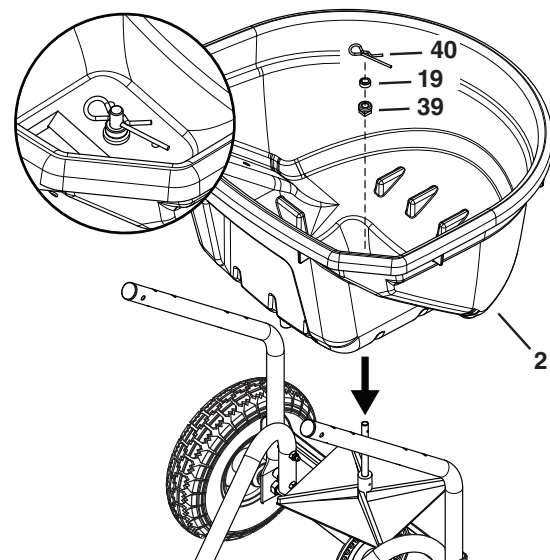


Figure 7

STEP 8: (SEE FIGURE 8)

- Attach the hopper to the lower set of holes in the hopper support tubes using four 1/4" x 1-3/4" hex bolts (11), 1/4" washers (27), nylon washers (26) and 1/4" nylock nuts (14). **Make only finger tight.**

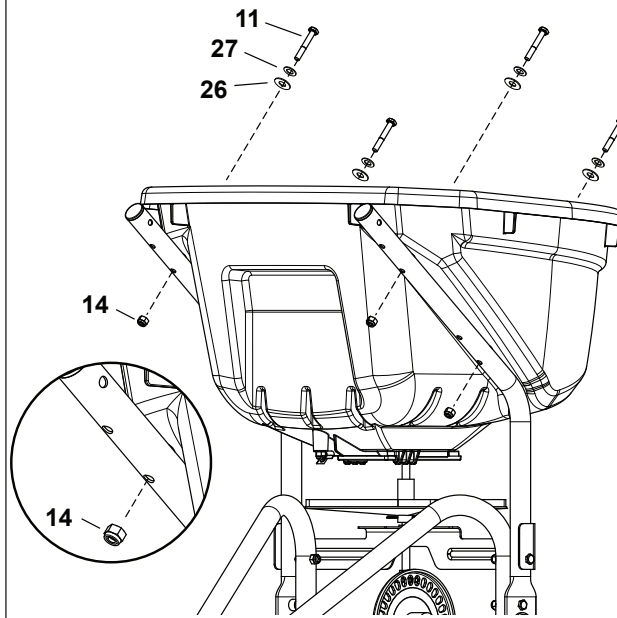


Figure 8

STEP 9: (SEE FIGURE 9)

- Tighten all bolts and nuts.

STEP 10: (SEE FIGURE 9)

- Attach the handle tubes (3) to the hopper support tubes using two 1/4" x 1-3/4" hex bolts (11), and 1/4" nylock nuts (14). **Tighten.**

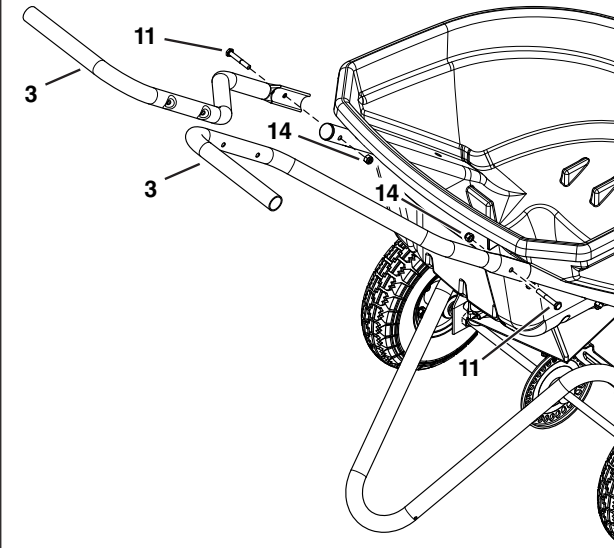


Figure 9

STEP 11: (SEE FIGURE 10)

- Attach the control cable (1) to the handle tubes using one 1/4" x 3-1/4" hex bolt (18), and a 1/4" nylock nut. (14).
- Attach the handle tubes together using a 1/4" x 2-1/2" hex bolt (35) and a nylock nut (14).

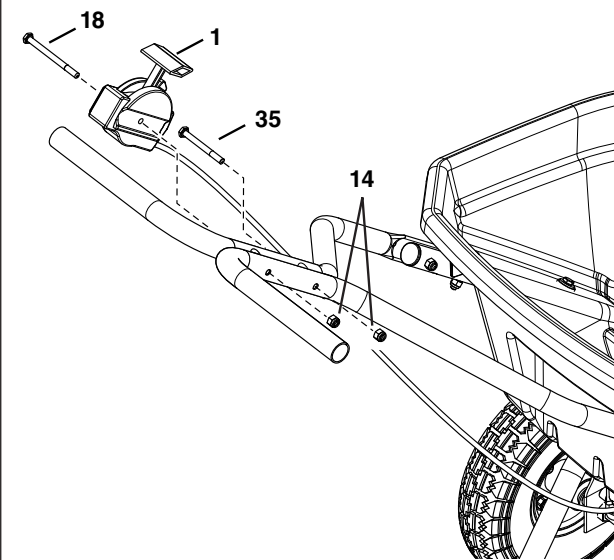


Figure 10

STEP 12: (SEE FIGURE 12)

- Install the handle grips (25) onto the handles.

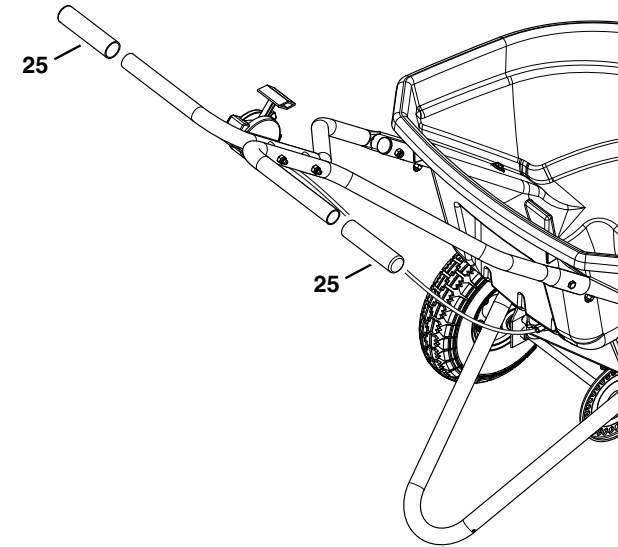


Figure 11