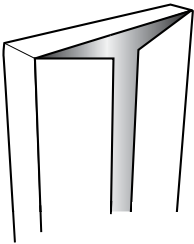


# Premium Patio Security Screen Door Installation Instructions

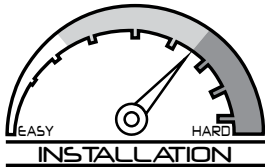


- Read completely through the installation instructions before proceeding with installation
- Installation requires two people
- Use appropriate protective equipment, including safety glasses
- Children should not be allowed in work area
- Failure to install door correctly could result in injury



## RETAIN PACKAGING DURING INSTALLATION

Do NOT discard packaging materials until installation is complete



## PROFESSIONAL INSTALLATION RECOMMENDED

Above average degree of difficulty. Requires installation experience.



[helpmeinstallit.com](http://helpmeinstallit.com)

## NEED HELP?

### REVIEW INSTALLATION VIDEO

Even professional installers will benefit from watching.



**1-866-317-8867**  
[support@uhdco.com](mailto:support@uhdco.com)

## CONTACT US BEFORE RETURNING

Customer service and technical support are available.  
Monday - Friday: 6:30am - 4pm PST

## RECOMMENDED TOOLS



Safety Glasses



Measuring Tape



Pencil



Box Cutter



Drill Bits  
9/64" & 3/32"  
minimum length: 2-3/4"



Drill



Phillips-head & Flat-blade  
screwdriver



Square



Level



Rubber Mallet



Wood Blocks (2"x4"x6")  
Shims



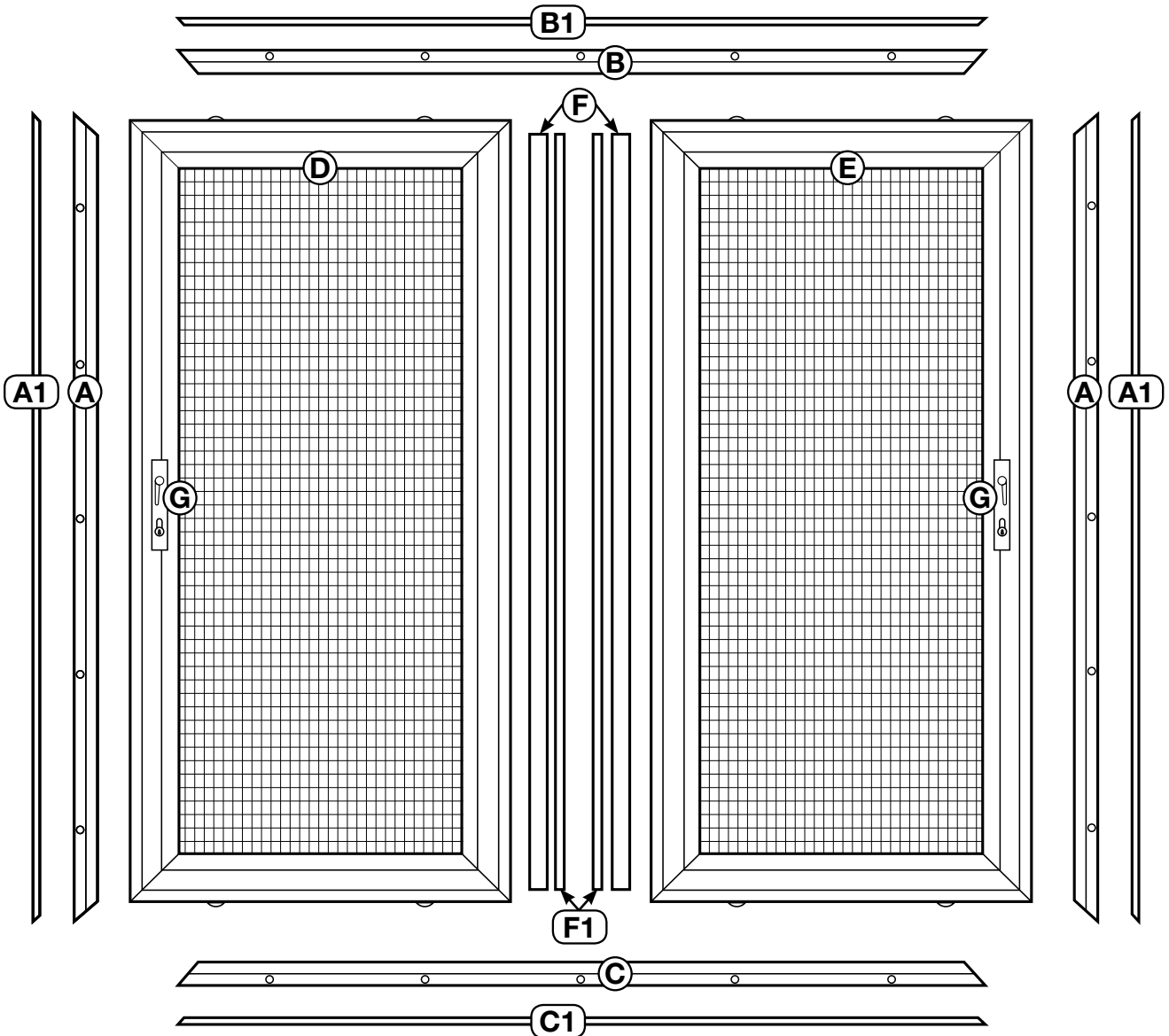
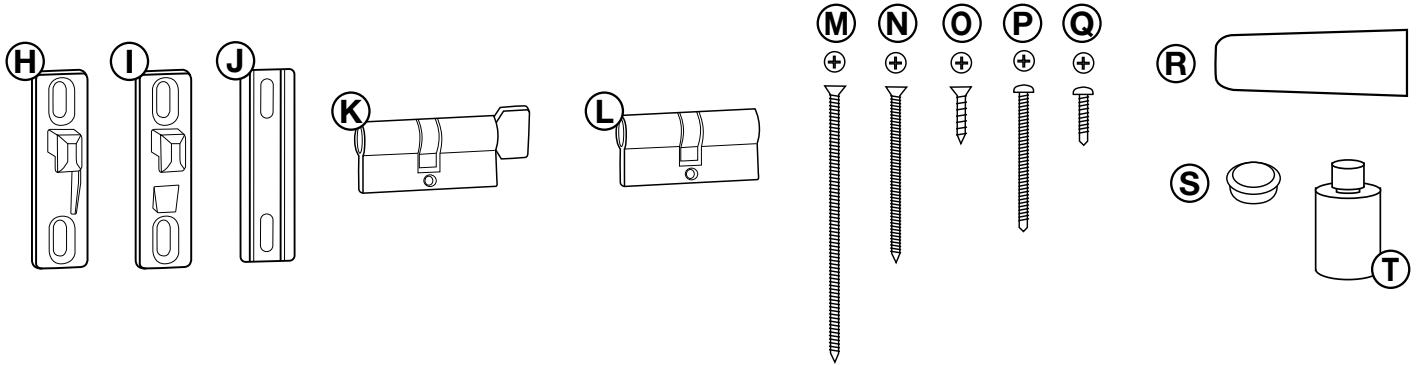
Paintable Caulk &  
Caulk Gun

## DOOR PARTS

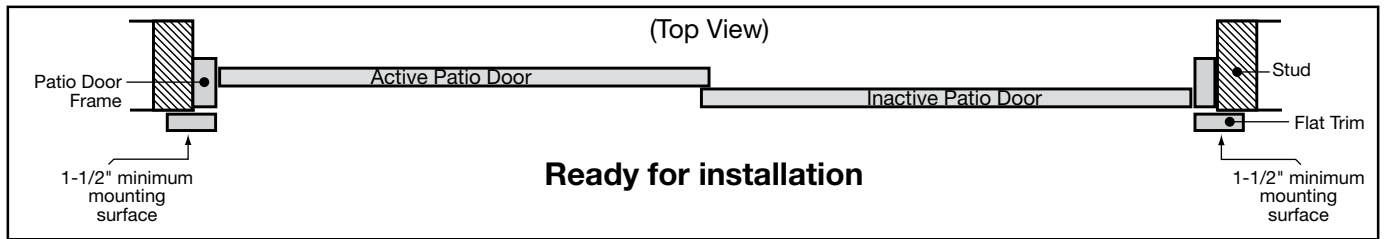
- A) Side jamb tracks (2)
- A1) Side jamb track snap covers (2)
- B) Top track (1)
- B1) Top track snap cover (1)
- C) Bottom roller track (1)
- C1) Bottom roller track snap cover (1)
- D) Security screen door - Active panel
- E) Security screen door - Inactive panel
- F) Interlock channel
- F1) Interlock snap cover (2)

## HARDWARE & FASTENERS

- G) Locking handles (4)
- H) Latch keepers (2)  
(1 top/1 bottom)
- I) Latch keeper (1) (center)
- J) Latch keeper shims (3)
- K) Active door lock cylinder
- L) Inactive door double  
deadbolt lock cylinder
- M) #10x3 1/2" flat-head screws (24 pcs.)
- N) #6x2" temporary dry wall screws (12 pcs.)
- O) #8x1/2" flat-head screws (12 pcs.)
- P) #8x1-1/2" pan head screws (4 pcs.)
- Q) #6 x5/8" pan head screws (14 pcs.)
- R) Door bumpers (2)
- S) Adjustment screw caps (white - 12 pcs.)
- T) Touch-up paint



# 1 Identify and prepare mounting surface



## Inspect Your Entryway for Obstructions

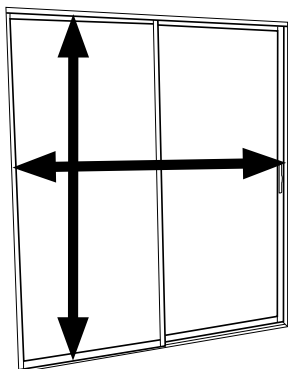
Check for any obstructions above and around your entryway that may prevent a sufficient flat surface for your new security door installation, such as:

- Light fixtures
- Bushes or hanging plants
- Low overhang

## Measure Your Opening

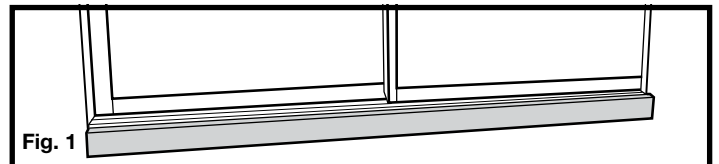
Measure between the inside edges of the left and right sides of the mounting surface for opening width. Measure between the inside edge of the upper mounting surface and the lower sliding patio door track for opening height. Use the chart to the right and these measurements to be sure the patio security door will fit your opening.

Security Door Size	Fits Door Opening Sizes	
	Width (W)	Height (H)
72" x 80"	70 1/4" - 73"	79 3/4" - 82 1/2"
96" x 80"	94 1/4" - 97"	



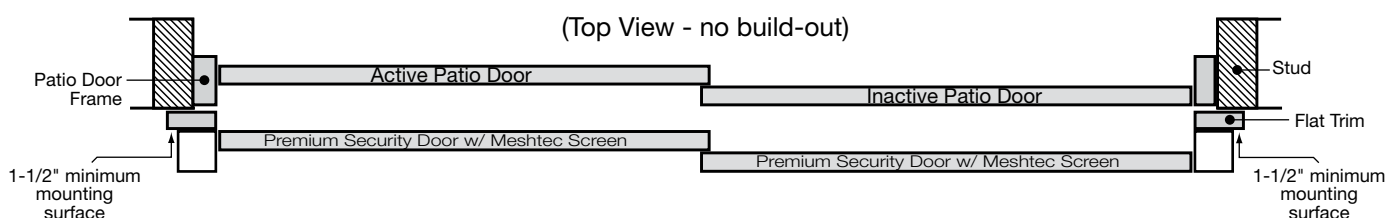
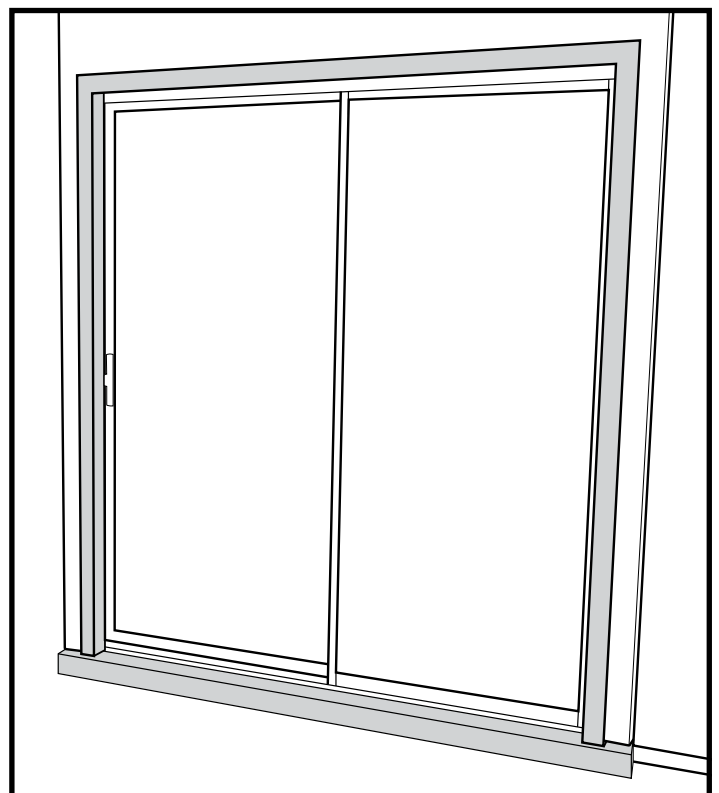
Measure height from inside top edge to inside bottom edge of existing sliding patio door tracks.

Measure width from inside edge to inside edge of existing sliding patio door frame.

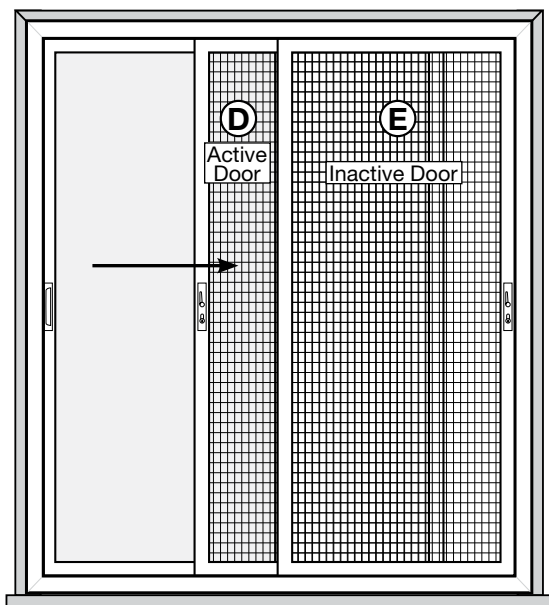


## Determine Type and Readiness of Mounting Surface

Your new security patio door will require a flat minimum mounting surface of 1-1/2" above, on both sides and below your entryway. In some cases this may require a build out. In some cases this may require a build out. If a build out is required, install bottom of build out first (**Fig. 1**), making sure it is flush with stoop to avoid creating a tripping hazard. Secure all sides of the build out to studs in the wall.

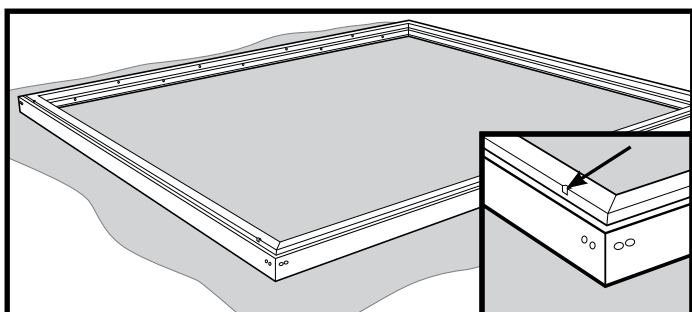


## 2 Determine active and inactive doors

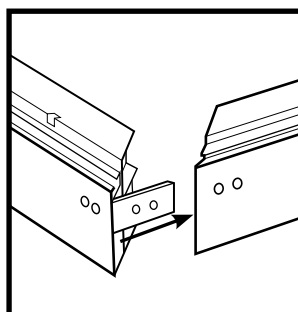


The Meshtec® **active door** must be on the same side as the active sliding glass door.

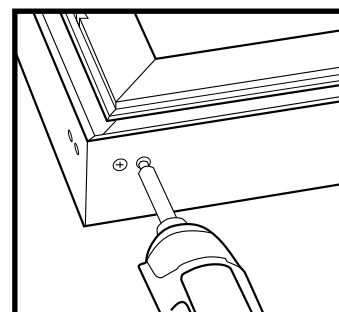
## 3 Assemble frame



Place all 4 frame pieces on a blanket or cardboard with exterior side facing up. Make sure the bottom roller track (**C**) is used at the bottom of the frame. Bottom roller track can be identified by the weep holes.

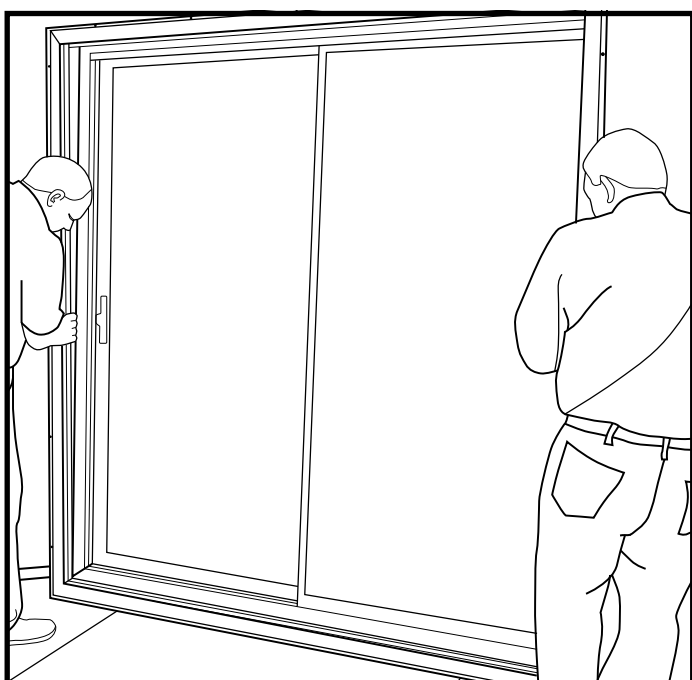


Insert corner keys already attached to the side jambs (**A**) in to top and bottom tracks at all four corners.



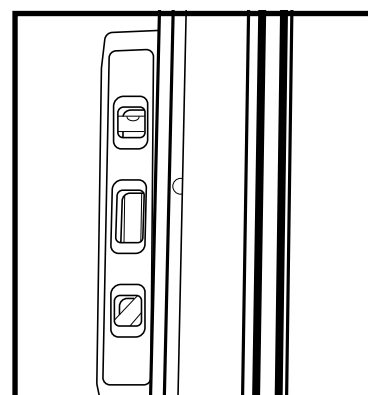
Attach the **active door (D)** side corner keys at the top and bottom; attach the **inactive door (E)** side at the **bottom only** using two #8x1/2" flat-head screws (**O**).

## 4 Place frame in position



Stand assembled frame up in front of opening.

To minimize possible thumb turn interference issues, align the active door side of the frame with the inside edge of the mounting surface. Align the top of the bottom roller track (**C**) even with or slightly below the patio door bottom jamb. Use blocks to hold at proper height during installation. If patio door bottom jamb is flush with stoop, your patio security door bottom jamb will be higher and create a step over.



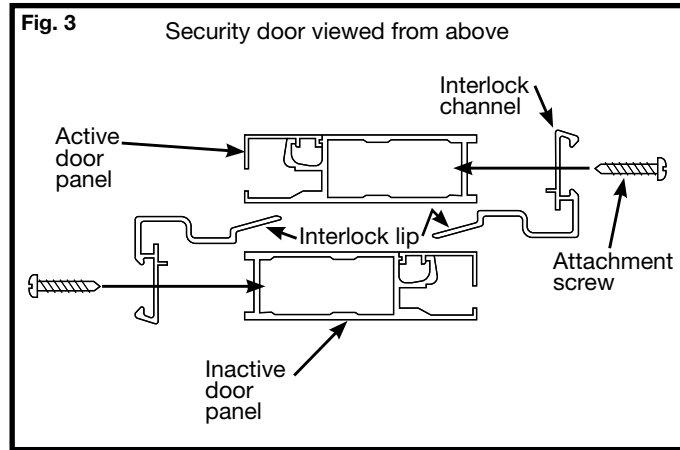
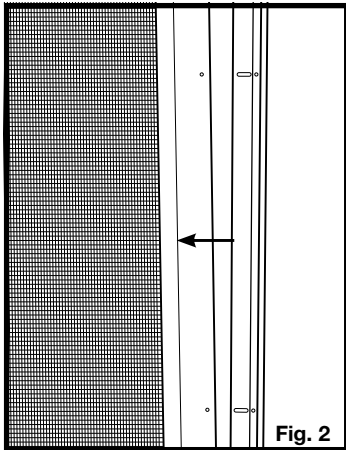
Once in position be sure that the frame is plumb and level. Attach to the mounting surface using temporary mounting screws (#6x2" temporary drywall screws (**N**)) through mounting holes in the side jambs only.

## 5 Check for interference

Measure from the point on the hardware that protrudes the farthest from the active main patio door to the inner edge of the security screen door frame (where it attaches to the mounting surface). If this measurement is less than 1/4" you may have an interference issue.

If interference is indicated, you may either build your mounting surface out to create the required clearance or, if it will solve the interference issue, you may install the active security screen door in the outer track. If you choose the latter, you must install the interlock channel to each door in the opposite direction indicated in steps 6 and 10 (so the interlock lip is facing toward the house in step 6 and away from the house in step 10) and the inactive door must be installed first, then the active door.

## 6 Attach interlock channel to active door panel



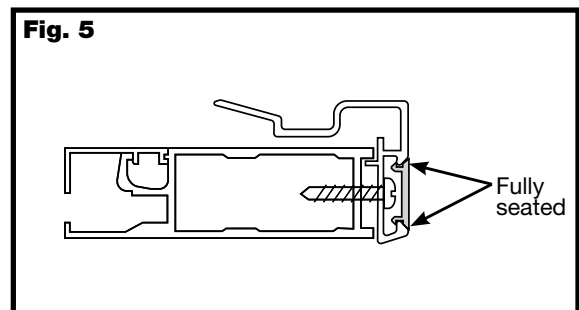
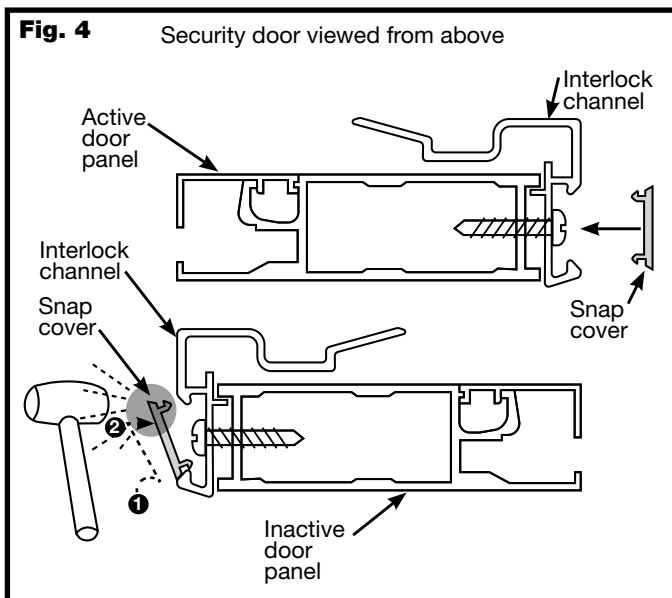
With the interlock lip facing away from the house (Fig. 2), attach the interlock channel (F) to the edge of the active door (D) through the pre-drilled holes in the channel opposite the lock side (Fig. 3) using #6x5/8" pan head screws (Q).

## 7 Install snap cover to active door panel edge

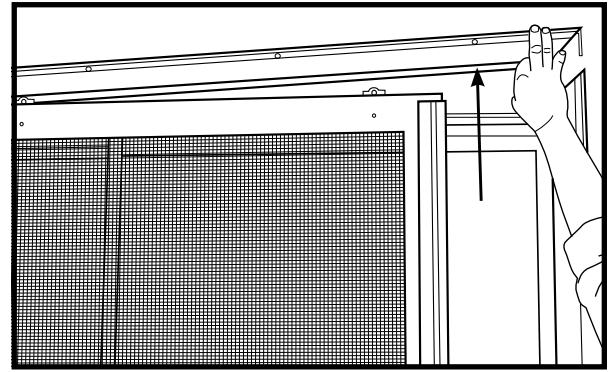
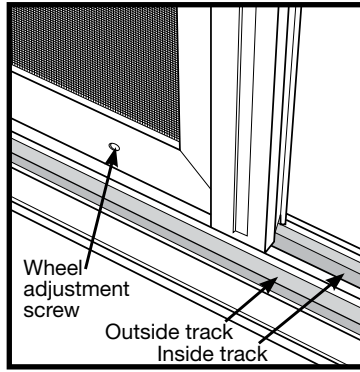
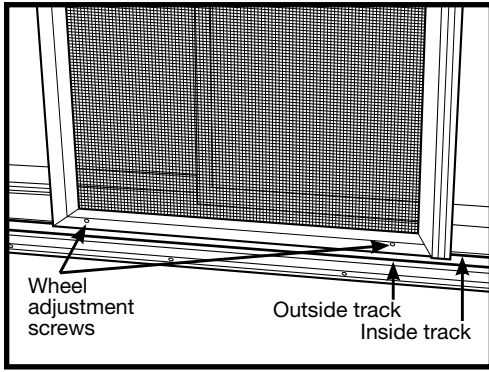
Set one edge of the snap cover (F1) into the edge of the interlock side of the active door panel being sure it is flush with the top of the door. Using a rubber mallet and a block of wood, hit on the opposite side of snap cover (Fig. 4) to securely snap the cover into place (Fig. 5). Once snap cover is secured, hold a wood block over the length of the snap cover and hit with mallet to smooth any irregularities in the snap cover surface.

### WARNING

Once installed, security snap covers cannot be removed without destroying them.



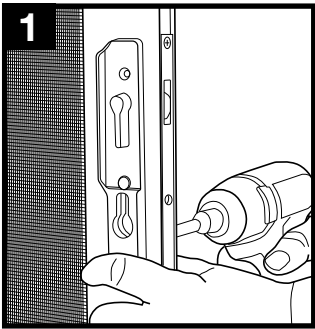
## 8 Install active door panel



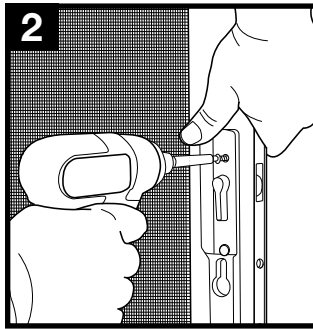
With the wheel adjustment screws and interlock lip facing away from the house, place the bottom of the door panel in the inner most track. If you are concerned about interference between your active or inactive Meshtec® door panels and your main patio door hardware, you can install the active door in the outer track.

Have a helper raise the top track (B) corner on the inactive side where the corner key was left un-attached in **Step 3**. Put the top of the door panel in lined up with the inner most track and lower the track onto the door panel and re-insert the corner key into the side jamb.

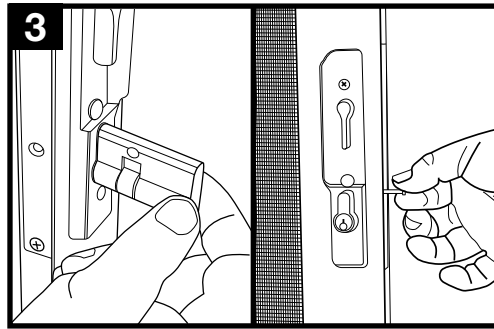
## 9 Install handle hardware to inactive door panel



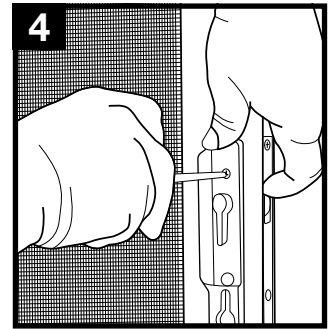
**1** Start on the interior of the inactive door. Insert the spindle and mounting screws through the mortise gear in the door panel.



**2** Move to the exterior of the inactive door. Align the openings on the inside of the other handle (G) with the spindle and 2 mounting screws and position the handle against the door frame.



**3** From the interior of the door, insert the inactive door lock cylinder (L) into the door through the trim plate. Using a Phillips-head screw driver, tighten the retainer screw until snug. Do **NOT** over-tighten.



**4** While holding both handle trim plates in place tighten the mounting screws.

## 10 Attach interlock channel to inactive door panel

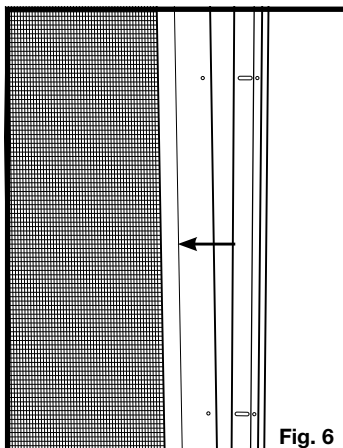


Fig. 6

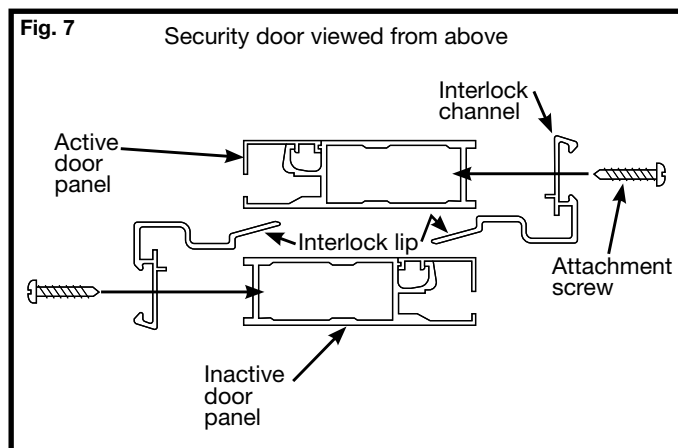


Fig. 7

Security door viewed from above

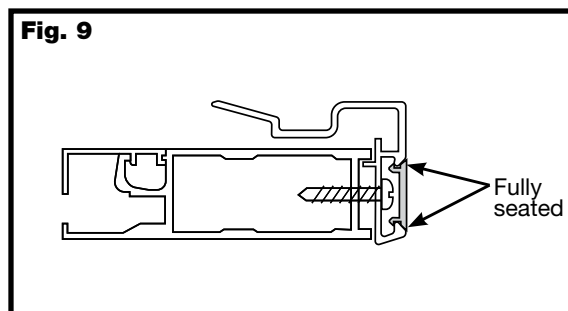
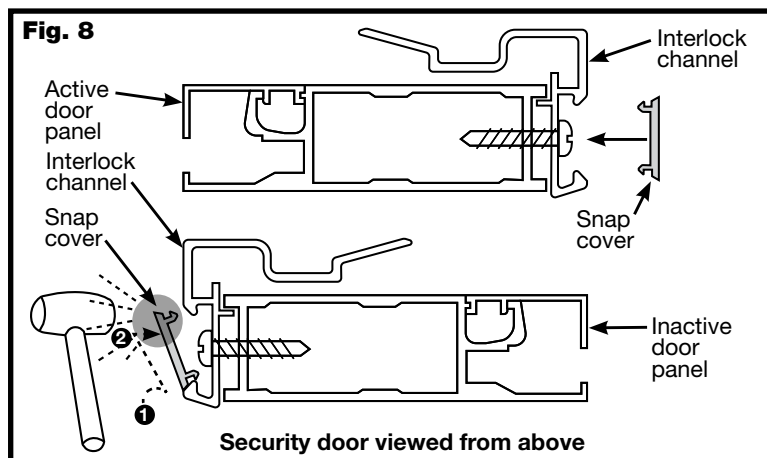
With the interlock lip facing toward the house (Fig. 6), attach the interlock channel (F) to the edge of the inactive door (E) through the pre-drilled holes in the channel opposite of the lock side (Fig. 7) using #6x5/8" pan head screws (Q).

## 11 Install snap cover to inactive door panel edge

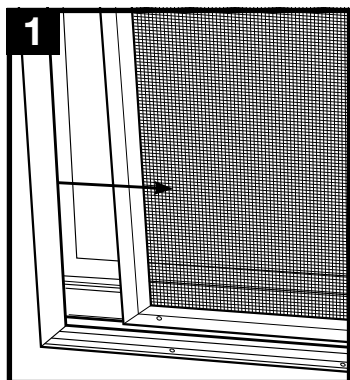
Set one edge of the snap cover (**F1**) into the edge of the interlock side of the active door panel being sure it is flush with the top of the door. Using a rubber mallet and a block of wood, hit on the opposite side of snap cover (**Fig. 8**) to securely snap the cover into place (**Fig. 9**). Once snap cover is secured, hold a wood block over the length of the snap cover and hit with mallet to smooth any irregularities in the snap cover surface.

### WARNING

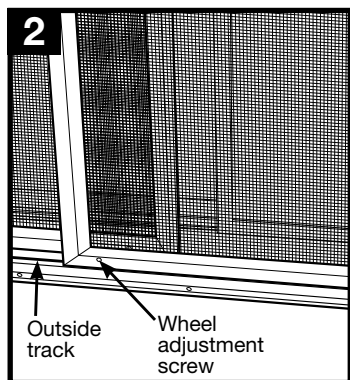
Once installed, security snap covers cannot be removed without destroying them.



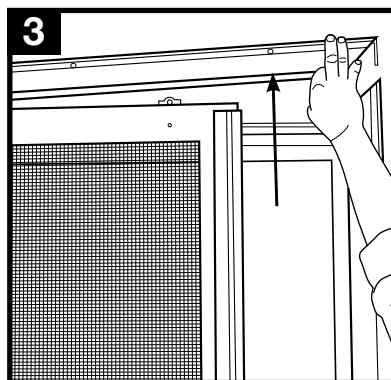
## 12 Install inactive door panel



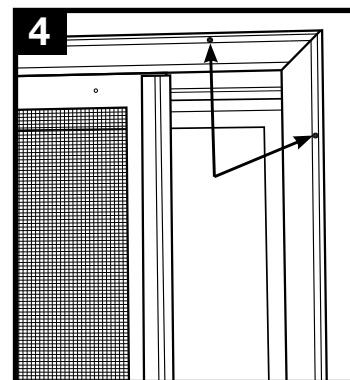
1 Open the active door (**D**) panel approximately 6" towards the center.



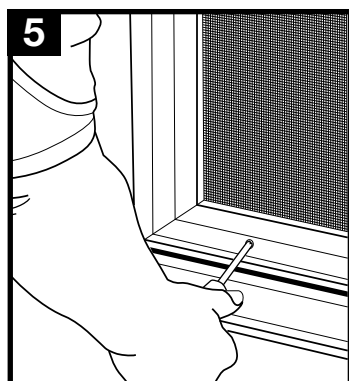
2 With the wheel adjustment screws and interlock lip facing toward the house place the bottom of the door panel in the outer most track. If you are concerned about interference between your active or inactive Meshtec® door panels and your glass door hardware, you can install the active door in the outer track.



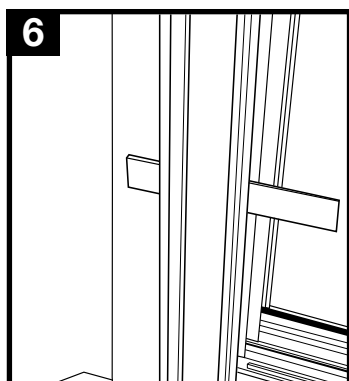
3 Have a helper raise the top (**B**) track corner on the inactive side where the corner key was left un-attached in **Step 3**. Put the top of the door panel in lined up with the outer most track and lower the track onto the door panel and re-insert the corner key into the side jamb.



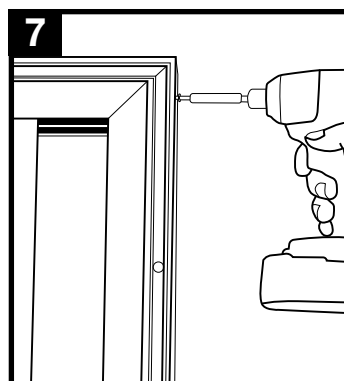
4 Install two #6x2" temporary dry wall screws (**N**). One in the top rail and one in the side jamb.



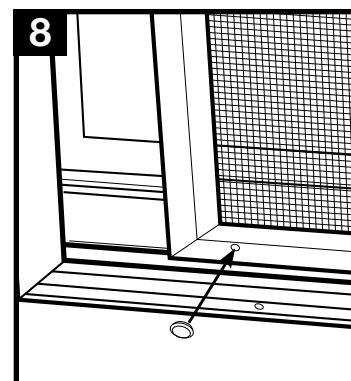
5 Test the slide of both doors. Using a phillips-head screw driver adjust bottom wheels up or down if necessary for optimum slide.



6 If slide remains tight check plumb of side frames and shim as necessary. **Note:** a sliding security door will have more resistance than a standard sliding screen door.

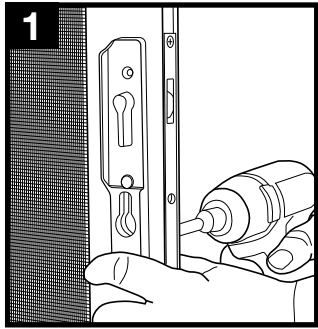


7 Attach the **inactive door** side corner keys using two #8x1/2" flat-head screws (**O**).

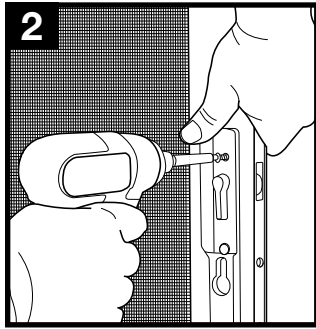


8 Install adjustment screw caps (**S**) over wheel adjustment holes at top and bottom of both doors.

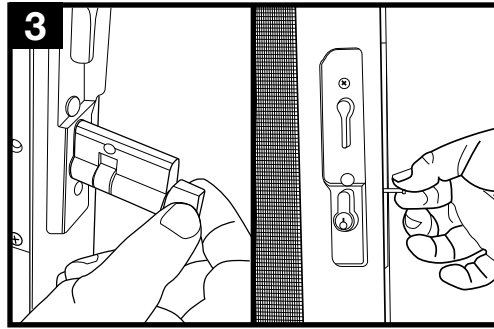
## 13 Install handle hardware to active door panel



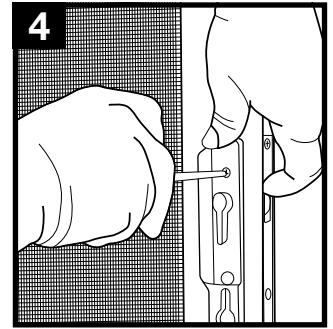
Start on the interior of the active door. Insert the spindle and mounting screws through the mortise gear in the door panel.



Move to the exterior of the active door. Align the openings on the inside of the other handle (**G**) with the spindle and 2 mounting screws and position the handle against the door frame.



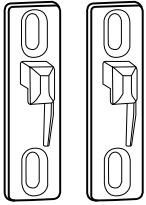
From the inside of the door, insert the active door lock cylinder (**K**) into the door through the trim plate. Using a Phillips-head screw driver, tighten the retainer screw until snug. Do **NOT** over-tighten. Tighten the two handle mounting screws until snug.



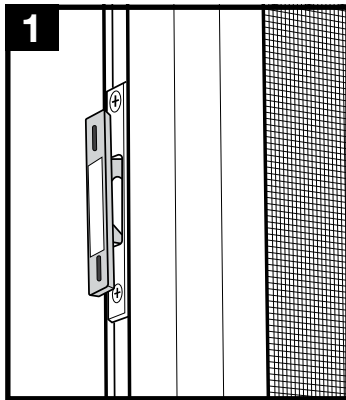
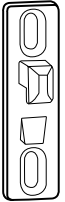
While holding both handle trim plates in place tighten the mounting screws.

## 14 Install latch keepers on both door panels

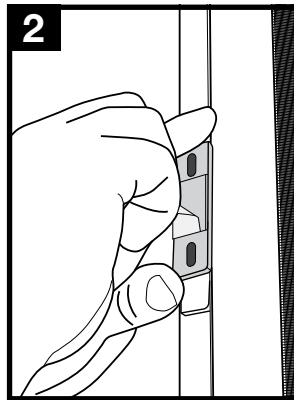
Top & Bottom



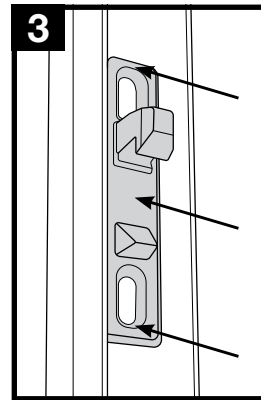
Center



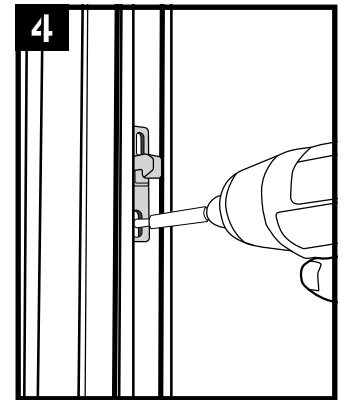
Place the latch keepers (**H: top & bottom, I: center**) into the latch holes on the active door edge with 2-sided tape facing away from the door panel. Use the thumb turn to engage the lock to keep latch keepers in place.



Remove two-sided tape backing from all three latch keepers.



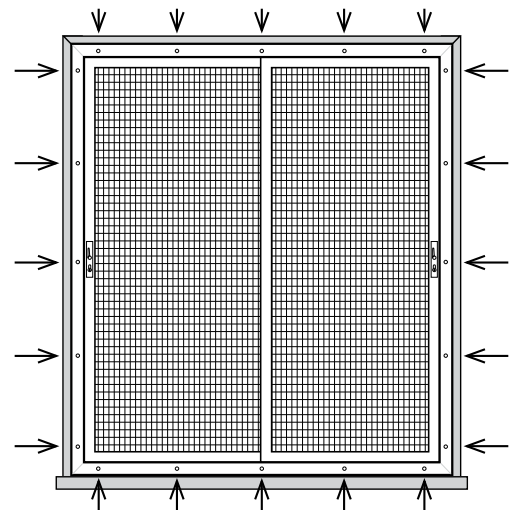
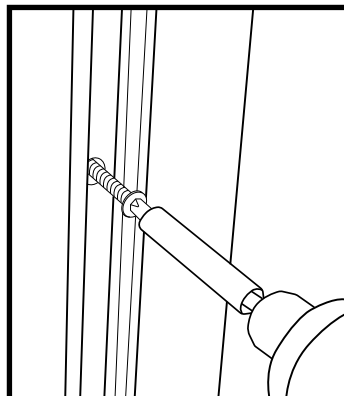
Slide the door closed and firmly push the door into side jamb to stick the latch keepers into place. Using thumb turn unlock the door and carefully slide the door open. Press each latch keeper to secure in position.



Using a 3/32" drill bit pre-drill holes and attach #8 x 1/2" flat-head screws (**O**) permanently install the latch keepers.

## 15 Install permanent frame screws

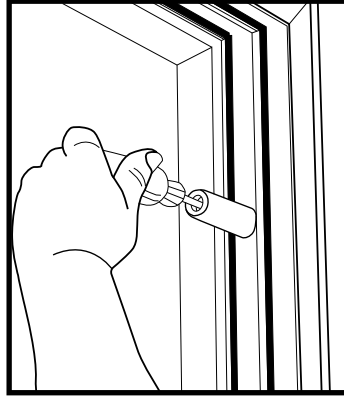
Using a 9/64" extended drill bit pre-drill top, bottom and side frame mounting holes that did not have a temporary screw and install remaining #10x3-1/2" flat-head permanent screws (**M**). Be careful to drive screws straight and level to avoid moving or racking the frame.





## 16 Install door bumpers

Remove one existing screw at top and bottom of inactive side jamb. Using #8x1-1/2" pan head screws (**P**) install door bumpers (**R**) in the permanent screw hole on the track utilized by the active door panel.

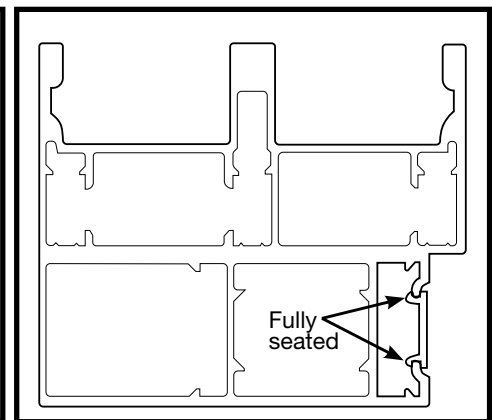
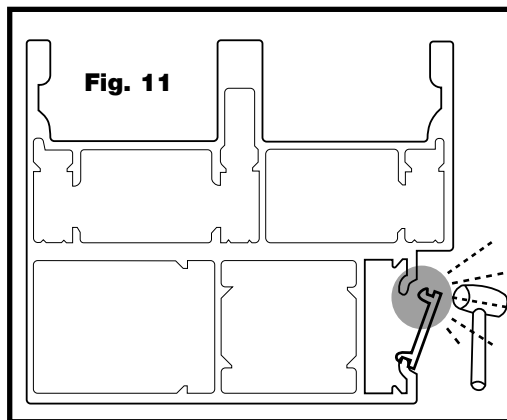
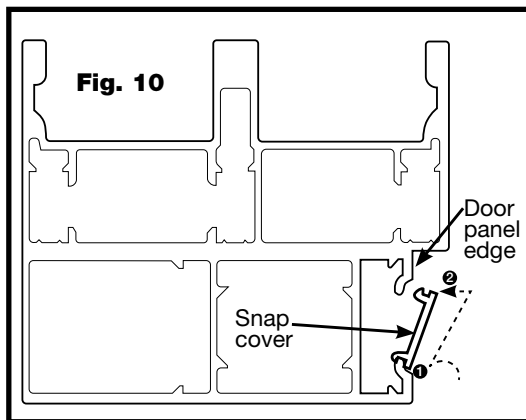


## 17 Install frame snap covers

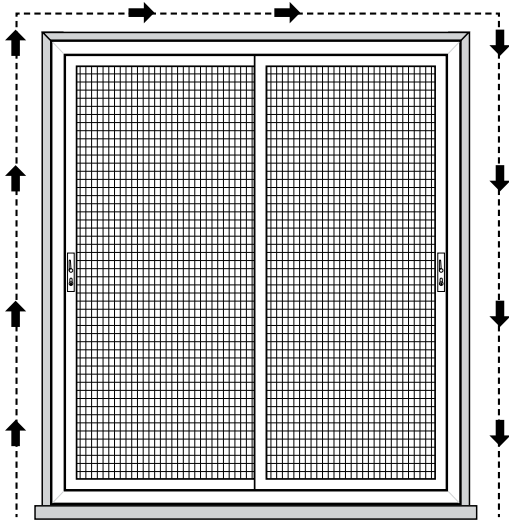
Set one edge of the snap cover (**A1**, **B1** & **C1**) into the edge of the frame. Using a rubber mallet and a block of wood, hit on the opposite side of snap cover (**Fig. 10**) to securely snap the cover into place (**Fig. 11**). Once snap cover is secured, hold a wood block over the length of the snap cover and hit with mallet to smooth any irregularities in the snap cover surface.

### WARNING

Once installed, security snap covers cannot be removed without destroying them.



## Final touch-up suggestions



- ① **Caulk (not included)**  
Caulk around the outside of the security door jamb frame, using paintable caulk, and paint to the desired color.

## Care and maintenance

Over time, airborne dust, dirt, and impurities can accumulate, which will cause visual defects to your Meshtec screen and, if not regularly and properly removed, can lead to further damage, staining, and corrosion. Your cleaning schedule depends upon your environment:

ENVIRONMENT	DESCRIPTION	CLEANING SCHEDULE
Mild	Inland, rural, and away from industry and urban activity	every 6 months
Moderate	Urban/suburban, inland, and away from heavy industry	every 3 months
Extreme	Urban/suburban, coastal (within 25 miles), or near heavy industry	every 2-4 weeks

Thoroughly wash the screen and door frame using a soft cloth, mild soap, and water. Take care to avoid exposing handles, main lock, and 3-point locks to excessive amounts of water. Using a dry, soft cloth, remove any excess water when done. Pay particular attention to drying the screen to frame attachment area fully. Avoid using any sharp objects or abrasive materials on the door frame or screen. Use white grease to lubricate the hinges at each cleaning.

## Warranty

Your Unique Home Designs security door with Meshtec Advanced Screen System is warranted against manufacturer defects under normal, residential use for the first 10 years you own the product, and terminates if you sell or otherwise transfer the product or the property upon which it was installed. An additional 5 years warranty protection is awarded (for 15 year total warranty) when the product is registered on-line at [uniquehd.com/registration](http://uniquehd.com/registration). Bug sweeps, weather-stripping, composite materials, and hardware included with or installed on the security door are covered for one year from date of purchase. Accessories fitted to the security door are not covered by this warranty, including but not limited to locks, handles, rollers, and closers. These accessories may be covered by warranties provided by the manufacturer or supplier of the products. Any problem caused by abuse, misuse, failure to follow care and maintenance instructions, adjustments due to settling of the structure that the product is mounted on, improper installation, or acts of God are not covered. Cutting parts not specified by the installation guide and parts drilled incorrectly are not included in this warranty. If manufacturer defects occur, Unique Home Designs will, at our discretion, either repair or replace the door. If your home is burglarized and entry was accomplished through a UHD security door, locked with the 3 point locking system, while this warranty is in effect, UHD will pay your insurance deductible up to \$1000 or replace, as applicable, the damaged UHD security door at no charge. Replacement items may vary in style due to changes in suppliers and product. Not all colors can be reproduced if colors have been discontinued. UHD is not responsible for any labor expense required to repair or replace the door. UHD is not responsible for securing the property while warranted items are being repaired or replaced.

To make a claim under this Warranty, send a brief written description of the problem, a picture of the claim, proof of purchase, and your contact information to: Unique Home Designs, 973 N. Colorado Street, Gilbert AZ. 85233  
Attn.: Warranty Claims

"Meshtec" is the registered Trade Mark of Meshtec International Co., Ltd. ('MTC') in the United States and other various worldwide jurisdictions (including registrations pending) and may not be used without the prior written consent of MTC.

## Extend Your Warranty!

When you register on-line at [uniquehd.com/registration](http://uniquehd.com/registration)