

Fence Swivel Mounting Bracket

Model# - SMBFUS

(For 1-1/4" x 1" rails)

Installation Instructions

Step 1

The ends of panel rails are inserted into swivel mounting bracket .
Place blocks under the panel to hold in at the desired height.

Step 2

Use socket spanner provided to adjust screw fixed with swivel mounting bracket, Allows panel angles in up/down & left/right direction (see illustration). Fix panel rail end with bracket with carriage screws provided(*fig.1*). Mark the location of the mounting holes in the mounting brackets

Step 3

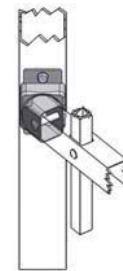
Remove the panel and drill 3/16" diameter pilot holes in the posts where marked

Step 4

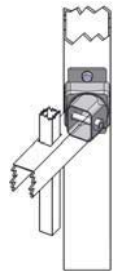
Replace the fence panel with the swivel mounting brackets and secure to the posts with the tapping screws provided(*fig.2*)



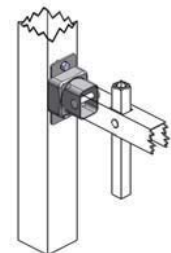
Socket Spanner



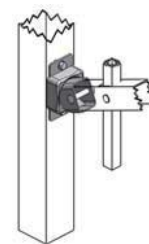
Turn right



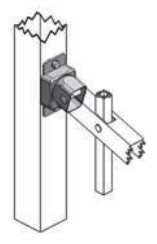
Turn left



Level



Up grade



Down grade

Tools Required

- Pencil
- Tape measure
- Drill
- 3/16" steel drill bit
- Flat blade screwdriver or ratchet with a 3/8" socket
- Adjustable wrench

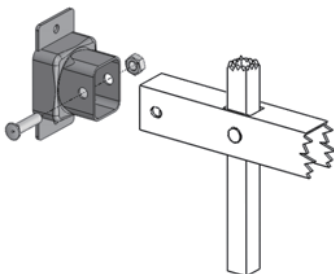


fig. 1

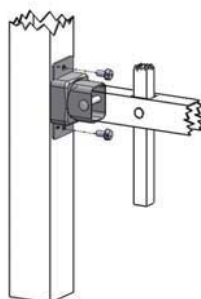


fig. 2

