



MB3260L (left side drain),

**Solo32**

MB3260R (right side drain)

**Actual Size:** 32x60x22  
**Soaking Depth:** 17 inches  
**Shipping Size:** 34x62x32  
**Shipping Weight:** 240 lbs.

**Net Weight:** 170 lbs.  
**Water Capacity:** 85 gal  
**Occupied:** 45-65 gal

**Included Features - Solo**

1. Acrylic Tub Shell:
  - Gloss White Finish
  - Fiberglass Reinforced
2. Stainless steel frame with leveling legs
3. Removable front apron
4. Acrylic end panel
5. MicroBubble Therapy System 10AMP 1200W
  - On/Off Push Control
  - 1HP Pump
  - Pressure Vessel
  - Agitator Valve

**Floor Drains**

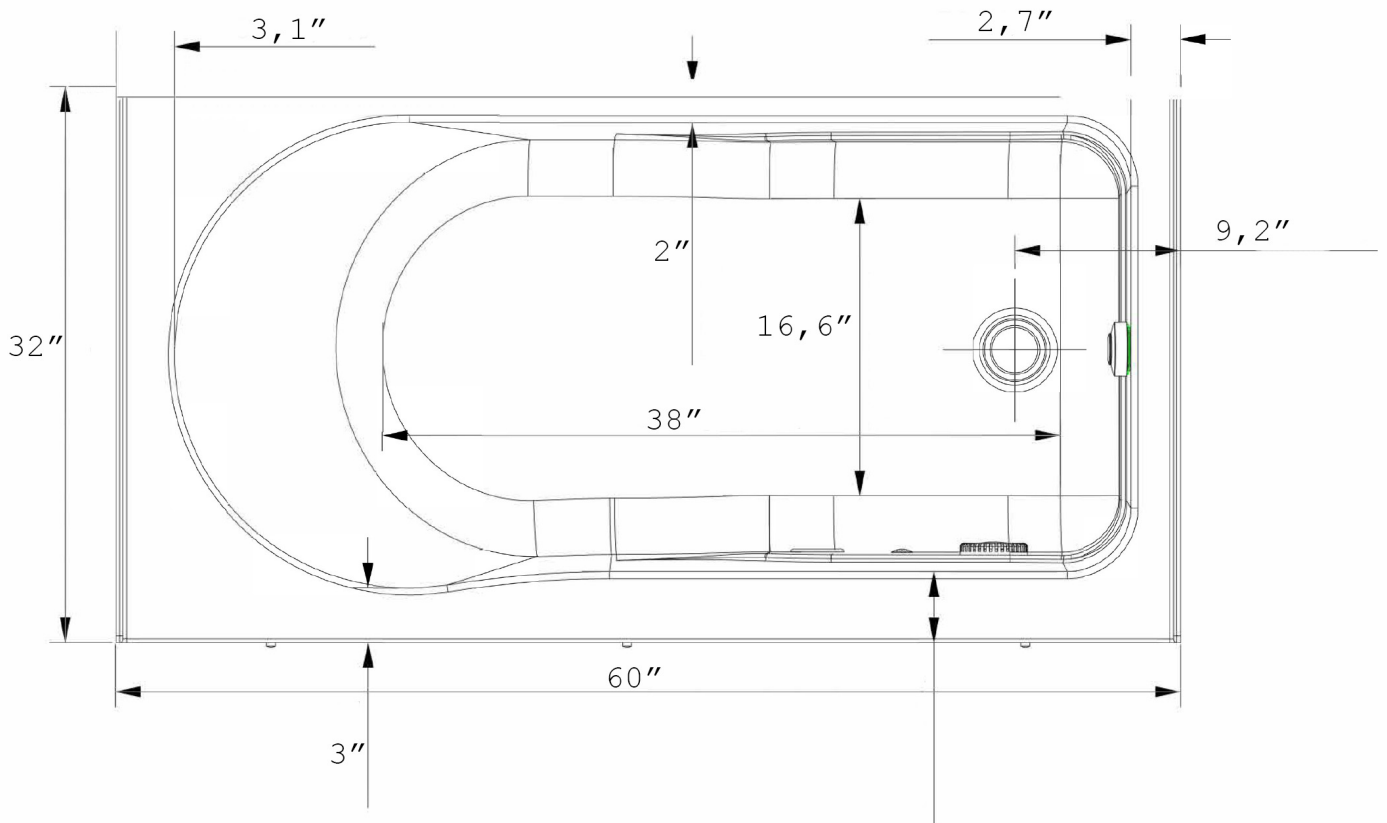
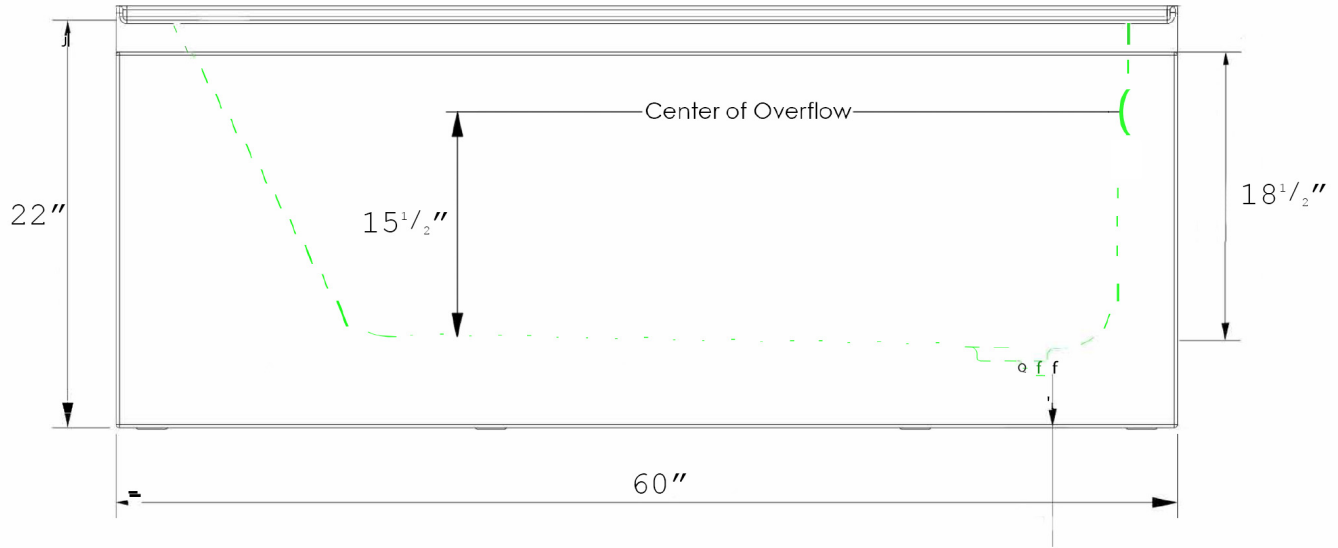
- One (1) 2" PVC T-type two (2) outlet drain with endcap
- One (1) overflow and cable operated opener with extended handle for easier grip in chrome finish

**Warranty**

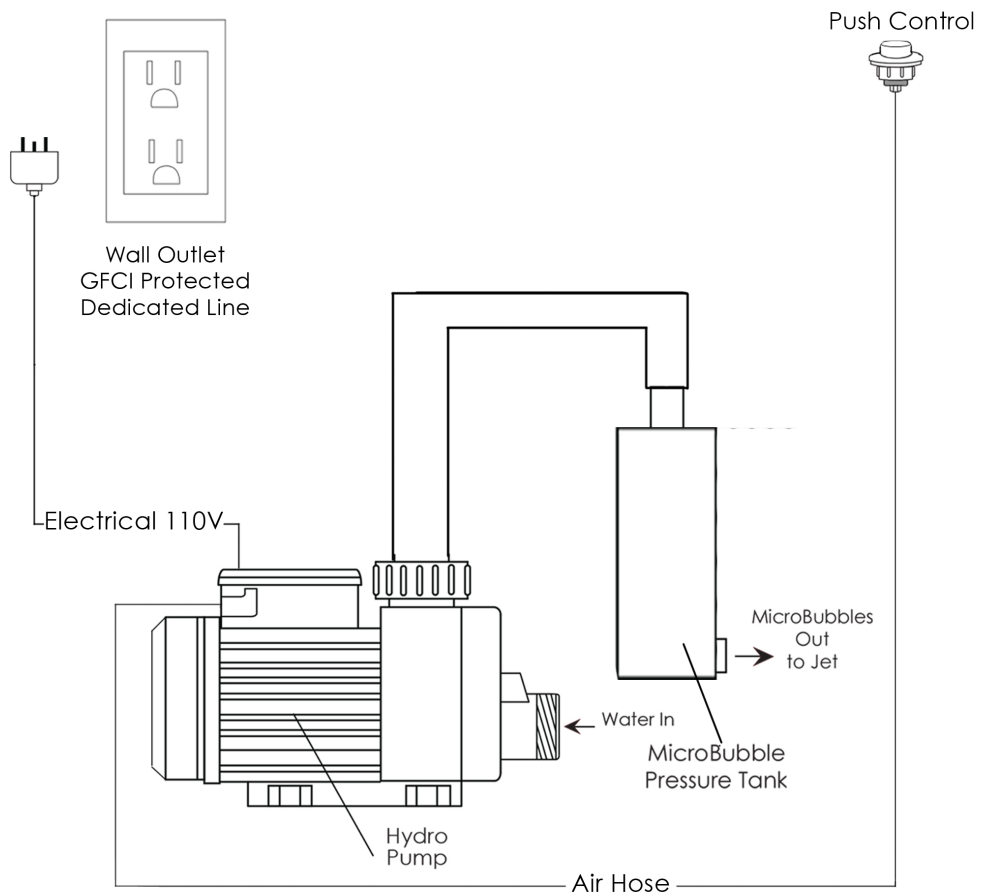
- 5 year warranty on tub shell, frame and parts (please visit [www.ellasbubbles.com](http://www.ellasbubbles.com) for detailed information)

**Electrical Requirements:**

One (1) dedicated 120V electrical line with a 20AMP GFCI standard three prong outlet is required



Infusion<sup>™</sup> Microbubble Therapy



**Package Jetting Information:**

**1. MicroBubble Therapy System 10AMP 1200W**

- 1HP Pump
- Pressure Vessel
- Air Switch and one (1) jet
- Agitator Valve

**Electrical Requirements:**

One (1) dedicated 120V electrical line with a 20AMP GFCI standard three prong outlet is required