

END2END

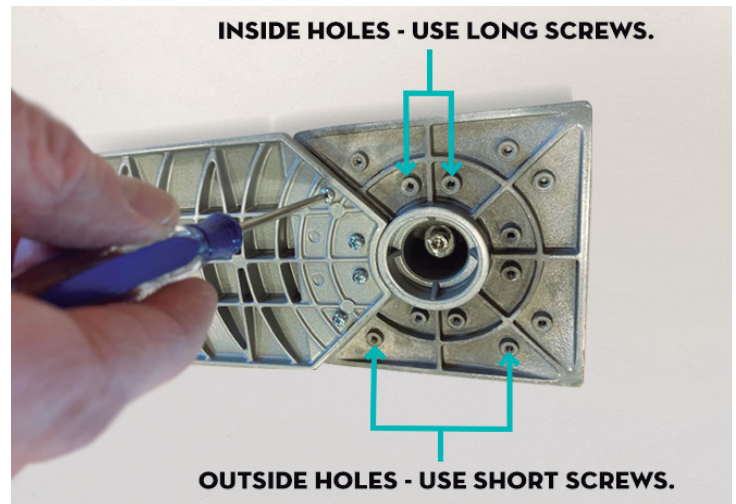
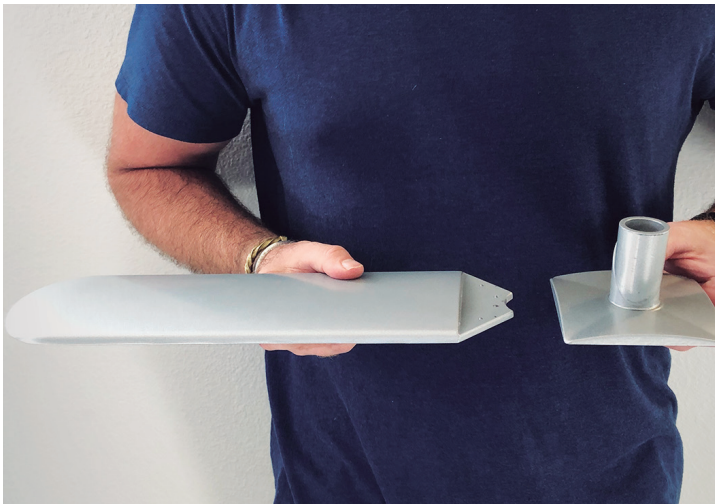
ROOM DIVIDER STANDS

INSTALLATION INSTRUCTIONS

SETTING UP A ROOM DIVIDER STAND IS EASY. WHETHER THE STAND IS NEEDED FOR PRIVACY, STORAGE, OR WORKSPACE, ROOM DIVIDER STANDS CAN BE SET UP WITH EASE! INSTRUCTIONS FOR SETTING UP YOUR END2END ROOM DIVIDER STAND CAN BE FOUND BELOW.

BLADE BASE ASSEMBLY:

1. First, locate the small Blade Base boxes. We will start by building the Base for each Upright Stand.
 - Locate the short screws, long screws, and screwdriver in the box.
 - Locate the 4 floor blades and the square Blade Base.
 - Attach the blades to the base using the screwdriver. Screw 2 long screws in the inside holes and 2 short screws in the outside holes for each blade (shown in the picture below).
 - Install 3 blades if your Upright Stand will be placed flush to a wall (see photo in Step 4).
 - Install 4 blades if your Upright Stand will be placed in an open area (see photo in Step 4).
 - Repeat these steps to assemble each additional Blade Base for your final setup.

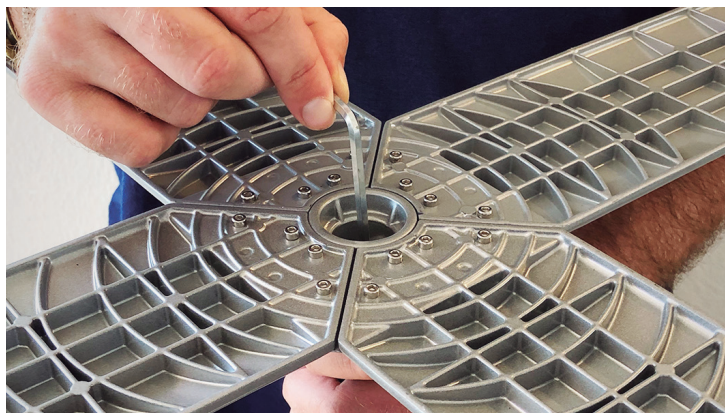


UPRIGHT STAND ASSEMBLY:

2. Locate the box labeled "Upright." Attach the Upright Pole to the assembled Blade Base by sliding the open end of the upright over the post in the center of the Blade Base.
 - If the Upright doesn't fit over the post, using the Allen wrench, loosen the post by turning the center screw counter-clockwise and then place the Upright over the post (see photo in Step 3).



- 3.** Now with the upright placed over the blade base, use the larger Allen wrench to tighten the screw at the bottom of the base. Make sure to strongly tighten this connection so the Base post expands and holds the Upright with strength.



- 4.** Once the upright is secured to the base, you can now flip the assembly over and place it at the desired location on the floor.
- Use the leveler pads on bottom of each blade to make sure the Base sits sturdy on the floor. Eliminate any rocking motion in the Base by making sure all 4 blades (or 3 if up against a wall) are contacting the floor and the Upright is vertically straight.



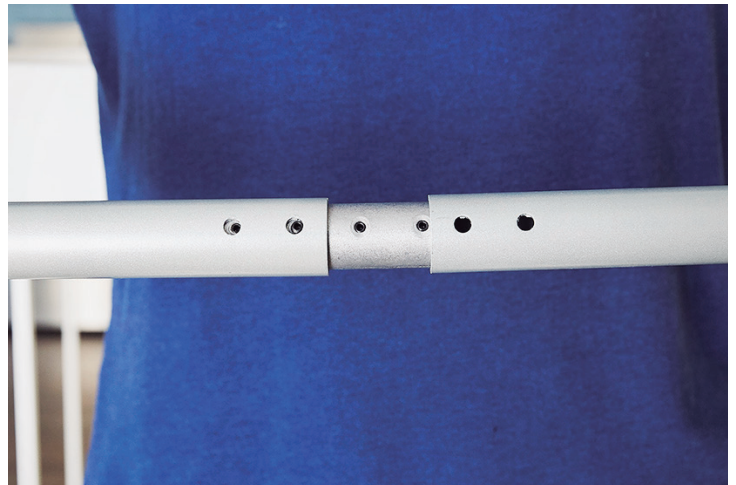
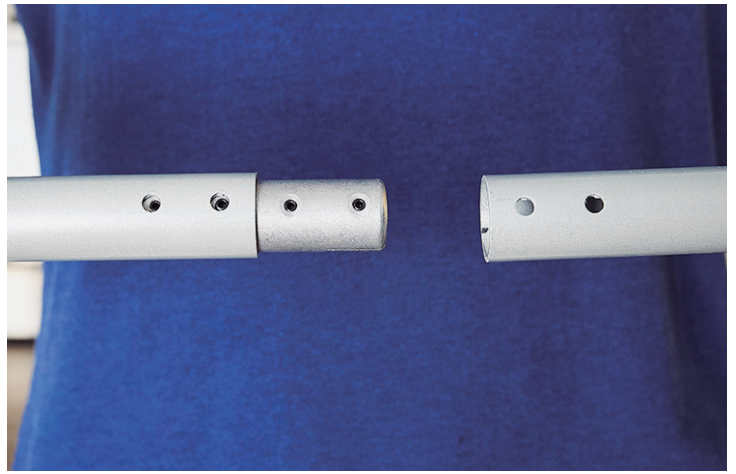
- 5.** Loosen both Upright knobs. Raise the Upright to your desired height and lock into place.
- 6.** Repeat this process for each Base and Upright assembly.



CROSSBAR ASSEMBLY:

7. Locate the box(es) labeled “Long” Crossbar. ***Please Note: Boxes labeled “Short” Crossbar do not require assembly and are ready for Step 10.**

- For Long Crossbars, connect the two sections of the Crossbar by locating the silver connector piece attached to the end of one of the rods.
- Using the Allen wrench found in the Crossbar box, slightly loosen the two screws that hold the silver connector piece to the rod (about 1 counter-clockwise turn for each screw).
 - *When you loosen the set screws within the silver connector piece, the connector will contract in size and allow for the other rod to be slid over.
 - *Please Note: If the silver connector piece falls out when loosening simply put the two half pieces back together, align under both screw holes and tighten.
- Grab the Crossbar section without the connector (hollow end) and slide/twist it over the silver connector piece on the other rod until the rods are fully attached.
- Turn the Crossbar until the 2 holes near the end of the tube are lined-up over the screws in the silver connector piece.
- Please make sure all four holes are now lined up over the screws.



8. Tighten the connection.

- Using the same Allen wrench, turn the 4 screws clockwise until tight. This will expand the silver connector piece to give the crossbar extra strength.



9. Repeat Steps 7 & 8 for each “Long” Crossbar assembly if your kit includes more than one.

10. Slide your Room Divider Curtain over the fully assembled Crossbar.

- Please Note: Some sizes have both long and short crossbars. See the Size Guide on the last page to find your kit size and an image of the completed setup.
- For setups that include 2 different sized room divider curtains, it is important to put the wider curtain on the Long Crossbar and the smaller curtain on the Short Crossbar as shown in the Size Guide.
- *If your curtains creased during shipping, we recommend steaming or ironing the curtains to easily eliminate any wrinkles.



FINAL ASSEMBLY WITH ROOM DIVIDER CURTAIN(S):

11. After the curtain has been fully loaded onto the rod, expand the crossbar to the desired length in order to connect to each upright. Place the hook found at each end of the crossbar into a slot at the top of the Upright Stand.

- Crossbars can be installed by 1 person but it can also be helpful to have a second person assist with the setup. We recommend having a person at each end of the crossbar to place the crossbar hooks into the Upright slots.



12. Repeat steps 10 & 11 for each additional Crossbar.

- Please Note: There are four slots at the top of each Upright Stand which allow for straight or 90 degree corner setups.



13. And there you have it, an End2End Room Divider Stand in no time!



Please contact our customer service department with any questions or concerns. And, even if you're all set, we'd still love to hear from you!

*For additional information visit us at www.RoomDividersNow.com

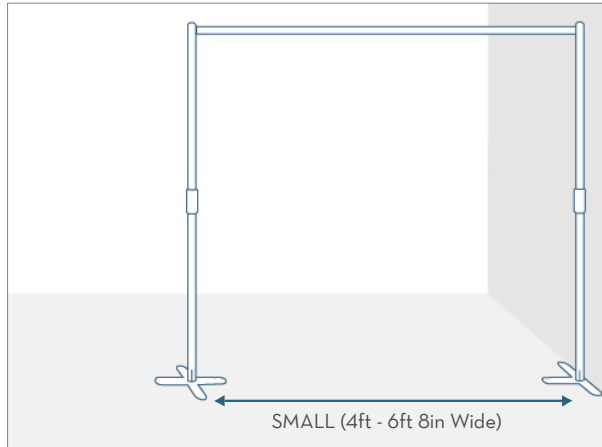
*Questions? Please e-mail us at Support@RoomDividersNow.com or call us at 847-243-3828

END2END

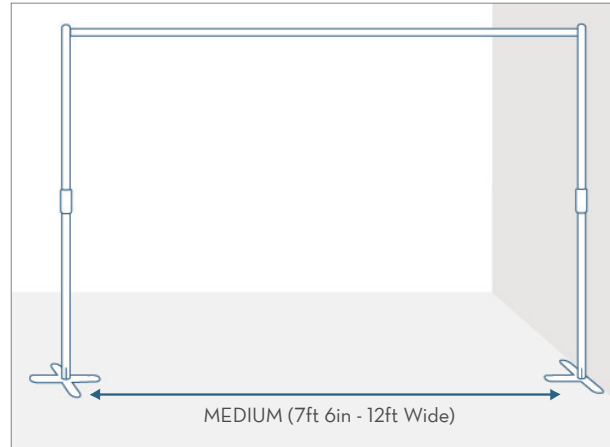
ROOM DIVIDER STANDS

DETAILED SIZE GUIDE

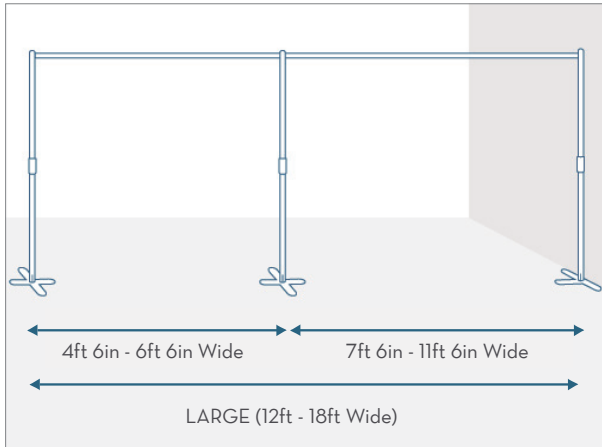
SMALL



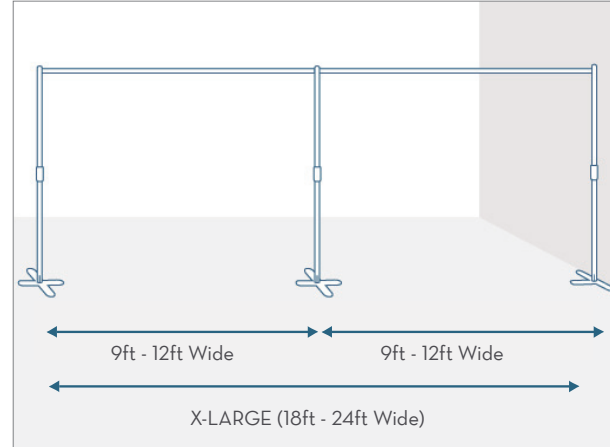
MEDIUM



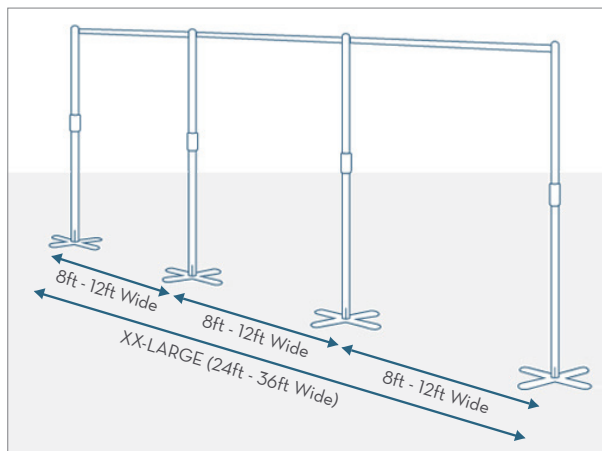
LARGE



X-LARGE



XX-LARGE



XXX-LARGE

