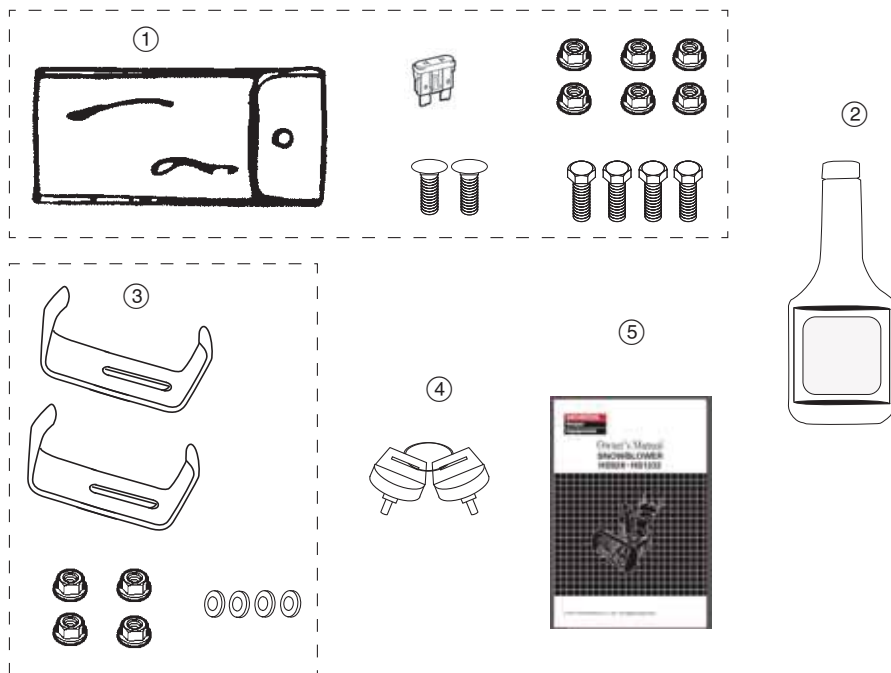


INITIAL USE INSTRUCTIONS

LIST OF LOOSE PARTS

Remove the loose parts carton and compare the loose parts against the following list. Contact an authorized Honda dealer from whom you purchased the snow blower if any of the loose parts shown are not included with your snow blower.

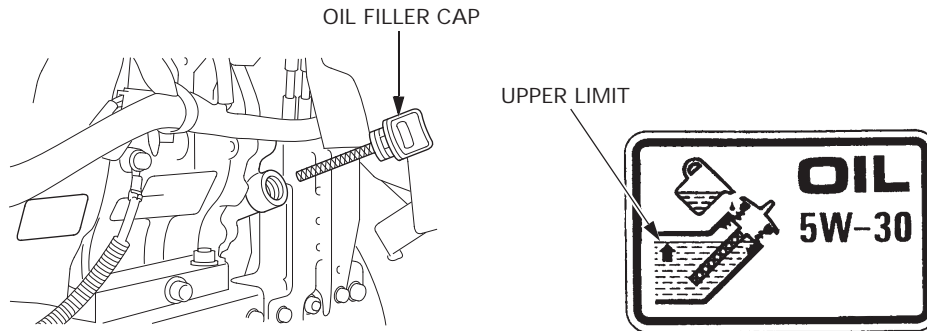
Ref No.	Description	Qty.
①	Tool kit (see page 41)	1
②	Bottle of oil (16 oz) HSS928A	1
	Bottle of oil (16 oz) HSS1332A	2
③	Skid shoes	2
④	Ignition key	2
⑤	Owner's manual	1



INITIAL USE INSTRUCTIONS

ADD ENGINE OIL

The snow blower is shipped WITHOUT OIL in the engine.



1. With the snow blower on a level surface, remove the oil filler cap/dipstick.
2. Add oil from the included bottle(s) of oil into the oil filler opening to the top of the filler opening (upper limit).

All Honda engines are run at the factory prior to packaging. Most of the oil is removed prior to shipment; however, some oil remains in the engine. The amount of oil left in the engine varies.

3. If you don't use the supplied oil, add enough recommended oil (page 48) to bring the oil level to the top of the oil filler opening.
4. Do not overfill the engine with oil. After filling the engine with oil, screw the filler cap/dipstick in and remove the hang tag near the recoil starter grip that says "The engine has no oil".

INITIAL USE INSTRUCTIONS

PLEASE REGISTER YOUR SNOW BLOWER

Please take a few minutes and register your purchase with Honda. You can register:

- By completing and mailing the registration card on the inside the back cover of this book
- Going on-line to powerequipment.honda.com and click on production registration shown at the bottom of the page
- By scanning the QR code to the right and completing the on-line form



BEFORE USING YOUR SNOW BLOWER

All snow blower operators must read the following sections:

- SNOW BLOWER SAFETY (page 5)
- BEFORE OPERATION (page 25)
- OPERATION (page 28)
- MAINTENANCE SCHEDULE (page 42)