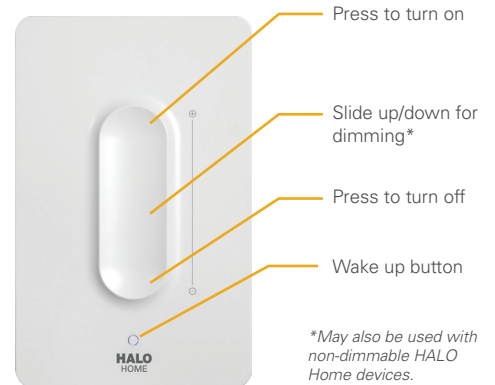


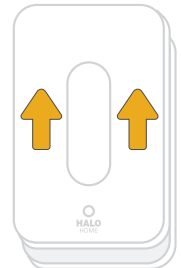
HWAS1BLE40AWH

- Wirelessly control smart lights from anywhere in your home.
- Must have HALO Home compatible lights installed and powered to use dimmer.
- Indoor use only.



1 Removing the back panel

- Press thumbs forward on the front of the dimmer, near the top. The back panel should slide down opposite the dimmer. Lift the back panel off.



2 Installing the batteries

- Once the back panel has been removed, insert the 3 provided **CR2032 Batteries** (Energizer Lithium recommended) in the location shown with the “**positive**” side of the battery facing you.

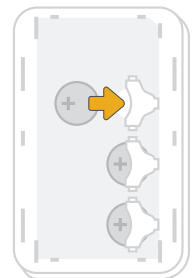
IMPORTANT: The red indicator light should come on for 1 second and go off. If the light stays on permanently, it is necessary to remove the batteries and install them again. The dimmer will not function if the light is on permanently.

CAUTION: Danger of explosion if battery is incorrectly replaced. Replace only with the same or equivalent type.

WARNING: The battery (battery or batteries or battery pack) shall not be exposed to excessive heat such as sunshine, fire or the like.

WARNING: Chemical Burn Hazard. Keep batteries away from children.

- This product contains a lithium button/coin cell battery. If a new or used lithium button/coin cell battery is swallowed or enters the body, it can cause severe internal burns and can lead to death in as little as 2 hours. Always completely secure the battery compartment. If the battery compartment does not close securely, stop using the product, remove the batteries, and keep it away from children. If you think batteries might have been swallowed or placed inside any part of the body, seek immediate medical attention.
- The cells shall be disposed of properly, including keeping them away from children.
- Even used cells may cause injury.



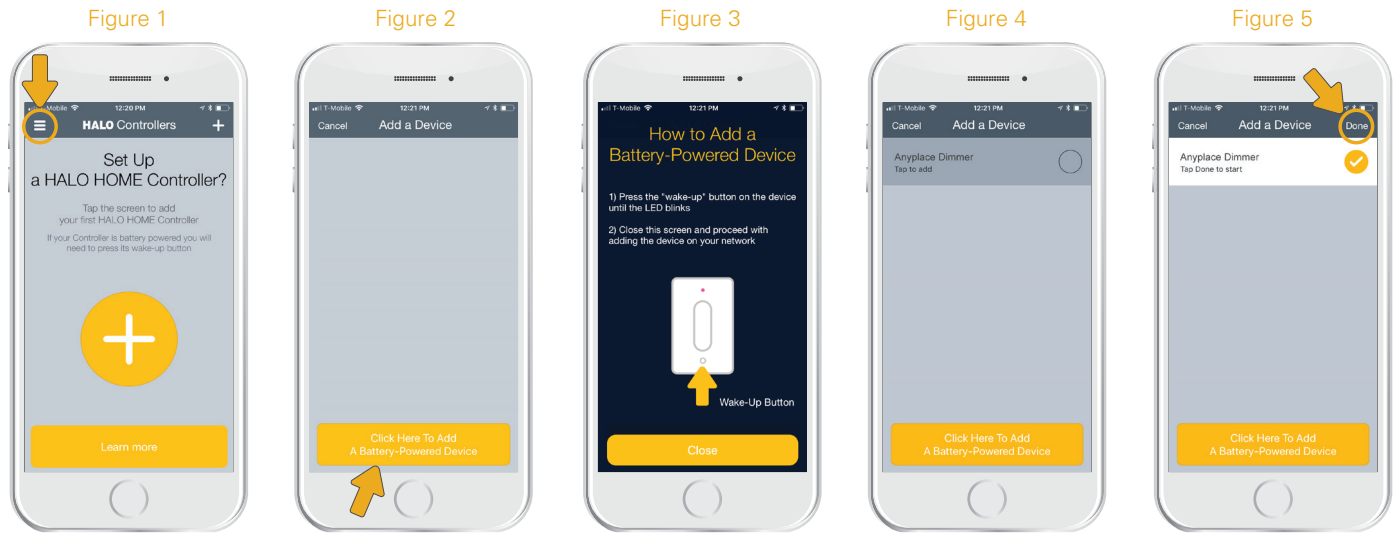
Powering Business Worldwide

3 Adding the dimmer to the APP

- Open the HALO Home app.
- Press the “≡” menu button in the upper left and navigate to “**controllers**”
- Tap the “+” button to go to add device screen.
- Press the “**Add Battery-Powered Device**” button on the add device screen. (Figures 1 & 2)
- Next, press the “**Wake-Up**” button on the Dimmer so that the red light is flashing a double flash. (Figure 3)
- At this point you should see the dimmer appear on the screen.
- If the dimmer does not appear in the screen before the flashing light goes off, then press the button on the dimmer again and repeat the process.
- Select the dimmer and press “**Done**.” It may take up to 30 seconds for this process to complete. (Figures 4 & 5)

Note: If the dimmer does not successfully add before the flashing light goes off, then press the button on the dimmer again and repeat the process.

- The dimmer will be added to your account and you will be ready to associate it to a device.

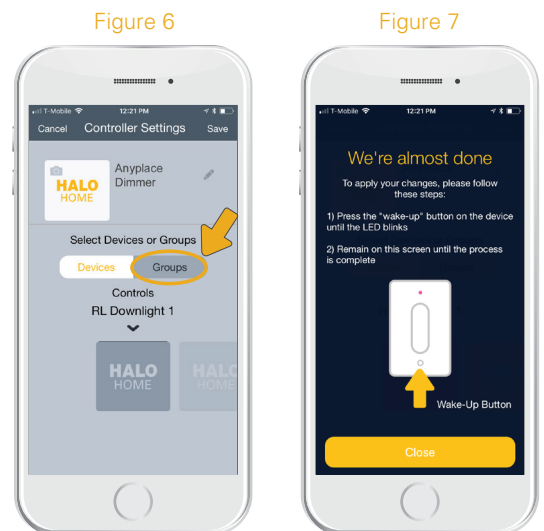


4 Associate the dimmer with HALO Home devices

- If you want to associate to a single device, select the “**Devices**” tab at the bottom.
- Swipe the device photos left or right until you find the device you want.
- To associate to a group of devices, create a group if you have not done so already. Then press “**Groups**” (Figure 6).

Note: You must create the group before you associate with the dimmer.

- Next swipe the group photos left or right until you find the group you want.
- If you like, you can give the dimmer a name and a photo by touching the dimmer name or photo.
- Before your dimmer will work, it is necessary to save the configuration to the dimmer. There are two steps to this process:
 - 1) Hit “**Save**” in the upper right corner of the app screen.
 - 2) Then, press the “**Wake-Up**” button on the dimmer. (Figure 7)



HALO Home Quick Start Guide - Anyplace Bluetooth Dimmer

- Pressing the button on the dimmer is necessary because the circuitry stays “asleep” unless someone is specifically touching it. This is done to extend the battery life.
- You will know that the dimmer has properly saved when the app closes the association screen, returns to the controller dashboard, and you will also see the device or group name on the dimmer dashboard.

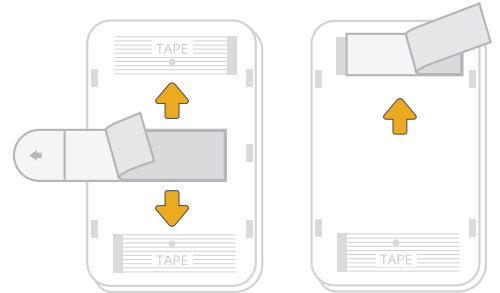
IMPORTANT: If you do not press the button on the dimmer and see the app close the association screen, the changes will not be saved and it will not work as expected.

Mounting by tape

- Attach using the provided screws, or to mount with tape: Find the side of the tape marked “Wall side” and make sure it is facing you.
- Remove the opposite side of the tape and stick to the area on the dimmer marked “Tape”. Push the tab through the slot.
- Remove the side of the tape marked “Wall side”.
- Make sure the area you want to mount the dimmer is clean and free from dust. Stick in place and press firmly for 10 seconds.

Note: Wall mounting is not required. Dimmer can also be used as a hand held device.

Note: The Anyplace Dimmer is not to be used as a cover plate to existing electrical junction boxes.



Removing from the wall

If it is necessary to relocate the dimmer to a new location: Remove the front plate and set aside.

If affixed with tape: Hold the dimmer with one hand, and pull the tape tab sideways with the other.

- Be careful to pull evenly and slowly and as sideways as possible (along the wall surface).
- Remove one tape and then the other. If a tape does not fully remove or breaks, twist the back cover slowly and carefully to remove.
- DO NOT PULL THE DIMMER OFF THE WALL AS THIS WILL LIKELY DAMAGE THE WALL SURFACE.

If affixed with screws: Simply remove the screws and replace in a different location.

- The HALO Home Anyplace Dimmer uses tape specifically designed to be removed without damaging wall surfaces. However, each surface is unique. EATON ASSUMES NO LIABILITY FOR DAMAGE RESULTING FROM REMOVING THE DIMMER.

