

### Potential Hazards

Overhead doors are large, heavy objects that move with the help of springs under high tension and electric motors. Since moving objects, springs under tension, and electric motors can cause injuries, your safety and the safety of others depends on you reading the information in this installation poster. If you have questions or do not understand the information presented, call The Genie Company or your local Genie Factory Authorized Dealer. In this section, and those that follow, the words **Danger**, **Warning**, and **Caution** are used to emphasize important safety information.

- Danger:** Indicates an imminently hazardous situation which, if not avoided, will result in death or serious injury.
- Warning:** Indicates a potentially hazardous situation which, if not avoided, could result in death or serious injury.
- Caution:** Indicates a potentially hazardous situation which, if not avoided, may result in injury or property damage.

Note is used to indicate important steps to be followed or important considerations.

### Pre-Installation Considerations

This opener includes parts and supplies needed for installation in MOST garages and on MOST garage doors. There are many variations of garages and garage doors. A few additional parts and supplies may be needed for installation in YOUR garage and to YOUR garage door. While going over these instructions, please note the additional items you may need. For help finding a local Genie® Professional Dealer, call 1-800-OK-GENIE or Customer Service at 1-800-35-GENIE.

There are a few specific areas of interest which might require extra materials. They are: 1) The header above the garage door where tension springs are used—does it extend far enough above the springs to allow mounting of the header bracket. If not, or if you can't tell you will probably need a piece of 2" x 6" lumber to span across wall studs. 2) The area overhead where the powerhead will be mounted—if you have a finished ceiling, you will need a piece of angle iron which can span across beams of trusses. 3) Is there wood above the door tracks near the floor where the Safe-T-Beam® can be most easily mounted, or will you need fasteners for mounting to the track itself or some other material? 4) Measure the height of your door. If it is taller than 7', you will need a Rail Extension Kit. Will you need extension brackets or wooden blocks to extend the Safe-T-Beam far enough off the wall to see past any door hardware?

Is there an electrical outlet within approximately 3' of the point where the powerhead will be? If not, you need to contact a licensed electrician.

Check condition of the door and all its associated hardware: Tracks, springs, hinges, rollers. Is anything loose or appear worn? If so, call a trained professional for an evaluation and repairs. If needed, **DO NOT ATTEMPT TO ADJUST SPRINGS OR OTHER ATTACHED PARTS!**

Operate the door manually. Does it move freely and smoothly? Check the balance of the door by lifting it by hand approximately halfway open and let go. It should stay put or move very slowly. If not, call a trained professional for repairs. Remove all ropes and remove or disable all locks connected to the garage door. It is also recommended that T-handles be removed. Closed loop lifting handles with no protruding parts can remain.

### WARNING

#### TO REDUCE THE RISK OF SEVERE INJURY OR DEATH

READ AND FOLLOW ALL SAFETY, INSTALLATION AND OPERATION INSTRUCTIONS. If you have any questions or do not understand an instruction, call The Genie® Company or your local Genie® Factory Authorized Dealer.

- DO NOT** install operator on an improperly balanced door. An improperly balanced door could cause severe injury. Repairs and adjustments to cables, spring assembly, and other hardware must be made by a trained service person using proper tools and instructions.
- Remove all ropes, and disable all locks connected to the door before installing operator.
- Install door operator 7 feet or more above the floor. Mount the emergency release knob 6 feet above the floor.
- DO NOT** connect the operator to the source of power until instructed to do so.
- Locate the wall console button: A) Within sight of door. B) At a minimum height of 5 feet so small children cannot reach it. C) Away from all moving parts of the door.
- Install the entrapment WARNING label next to the wall button or console. Install the emergency release tag on, or next to, the emergency release handle.
- The operator must reverse when the door contacts a 1-1/2 inch high object on the floor at the center of the doorway. This is about the size of a 2" x 4" board laid flat.

### WARNING

#### A moving door could result in serious injury or death.

- Keep people clear of opening while door is moving.
- DO NOT** allow children to play with the door operator.
- DO NOT** operate a door that jams or one that has a broken spring.

### WARNING

#### An Electrical Shock could result in serious injury or death.

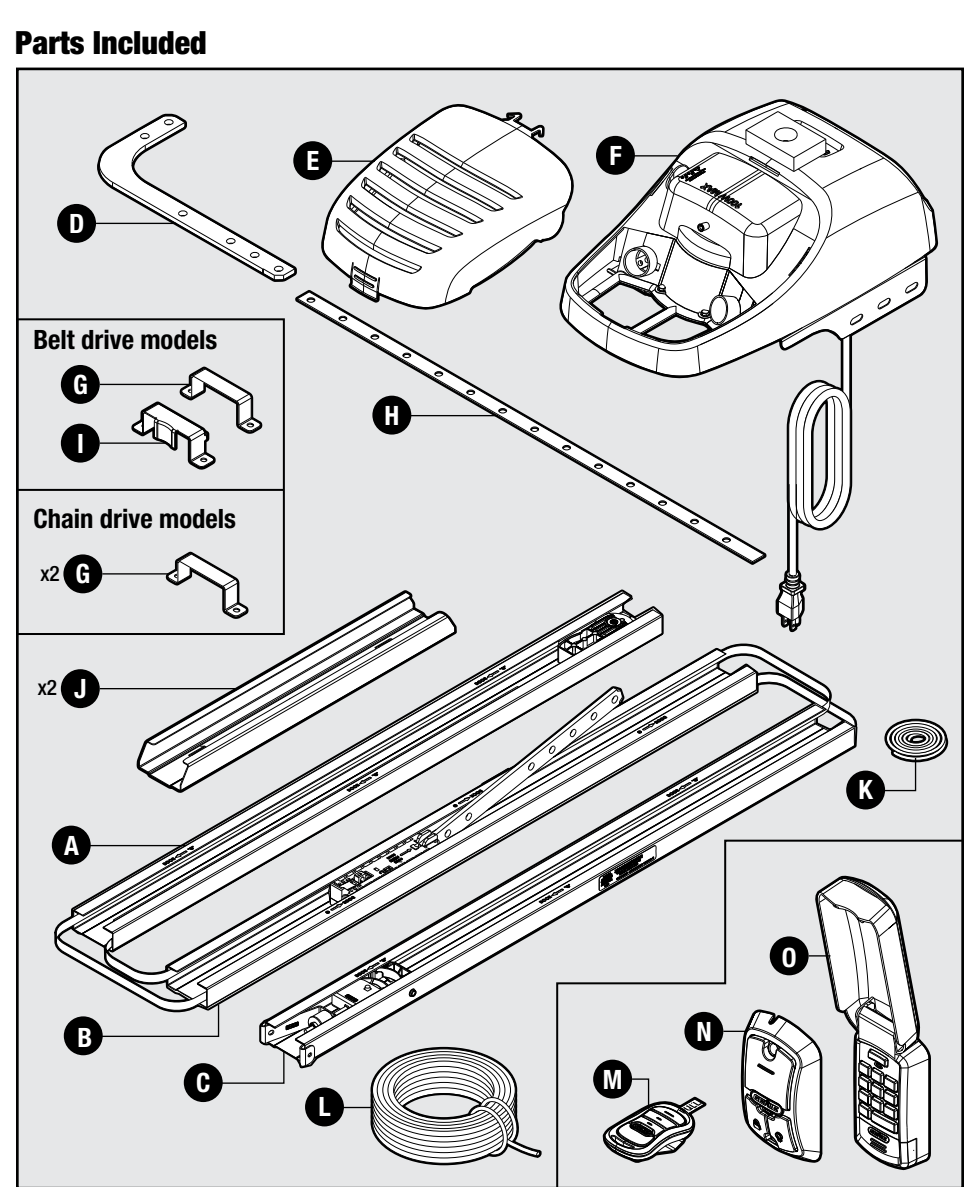
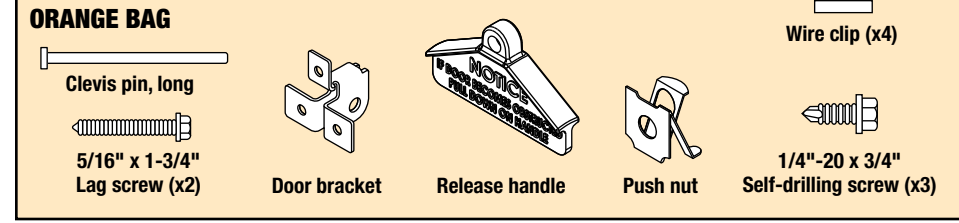
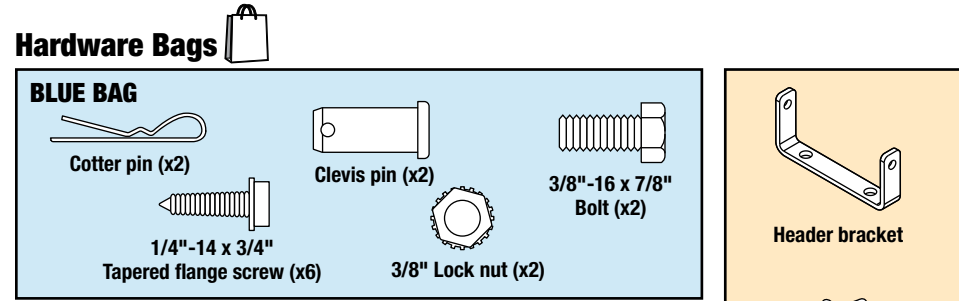
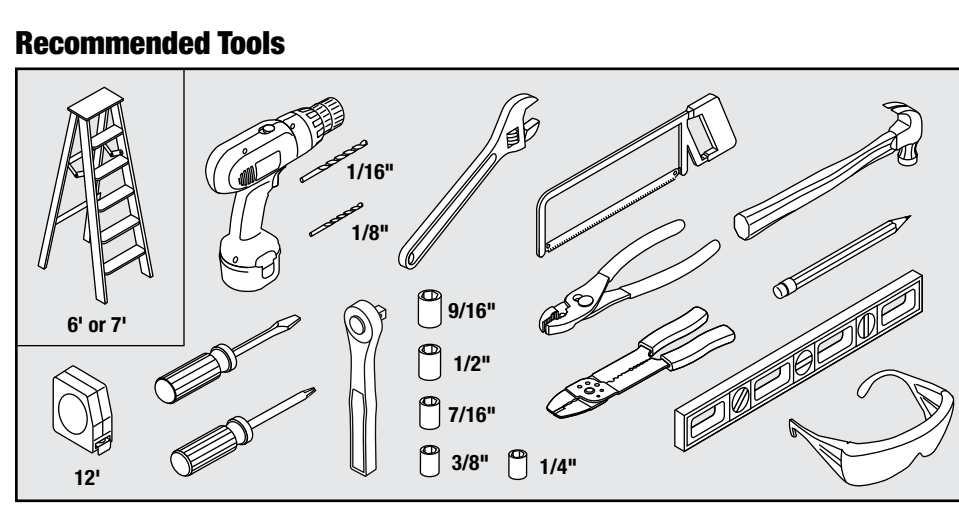
- Turn off power before removing operator cover.
- When replacing cover, make sure wires are not pinched or near moving parts.
- Operator must be properly grounded.

### WARNING

#### WARNING—HIGH SPRING TENSION

- DO NOT** try to remove, repair or adjust springs or anything to which door spring parts are fastened, such as wood block, steel brackets, cables or other like items.
- Repairs and adjustments must be made by a trained door system technician using proper tools and instructions.

**STOP** Need help or have questions? **DO NOT RETURN** to the store. Call us: **800-354-3643**

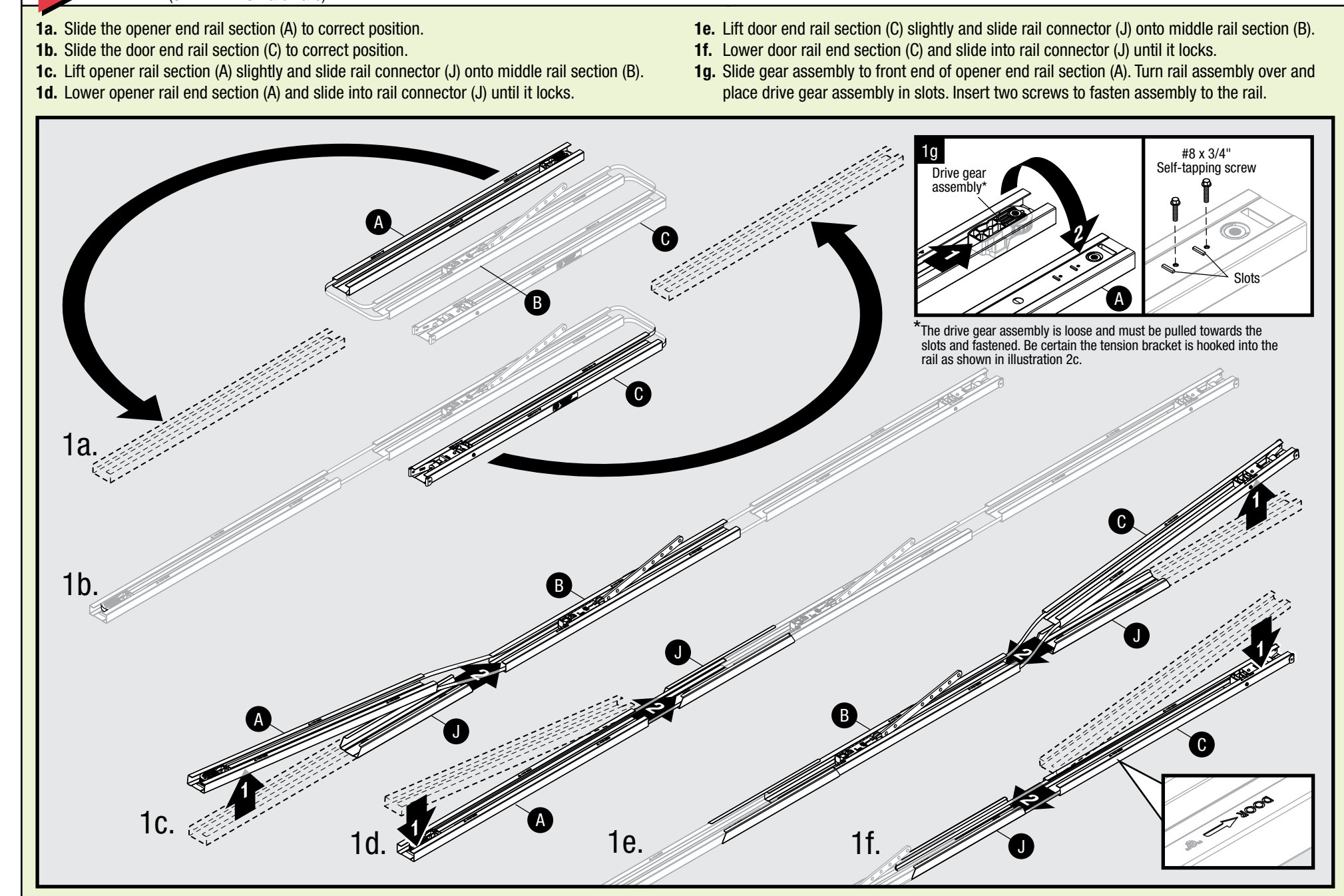


### Parts List

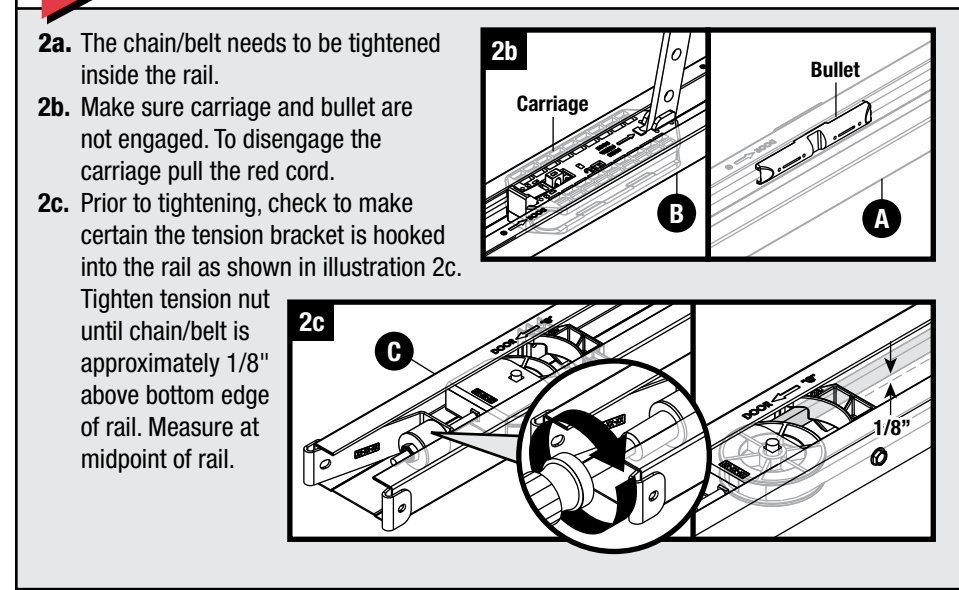
(A) Opener end rail section (G) Powerhead bracket (L) Safe-T-Beam/wall console wire  
 (B) Middle rail section (H) Mounting straps (M) Remote (N) Wall console  
 (C) Door end rail section (I) Powerhead bracket, belt drive (O) Wireless keypad  
 (D) Door arm, curved (J) Rail connector (P) Powerhead lens (Q) Emergency release cord  
 (E) Powerhead lens (K) Emergency release cord (Optional on some models)

## 1 Rail Assembly (GREEN BAG hardware)

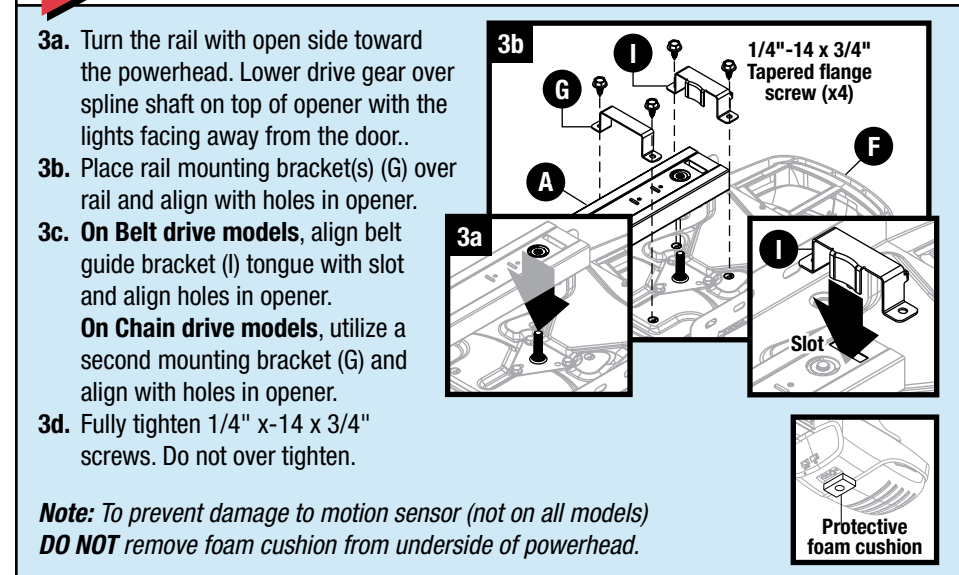
1. Check door height, 8' doors require a Rail Extension Kit (available at leading retail stores)  
 2. Fully read instructions and warnings before proceeding



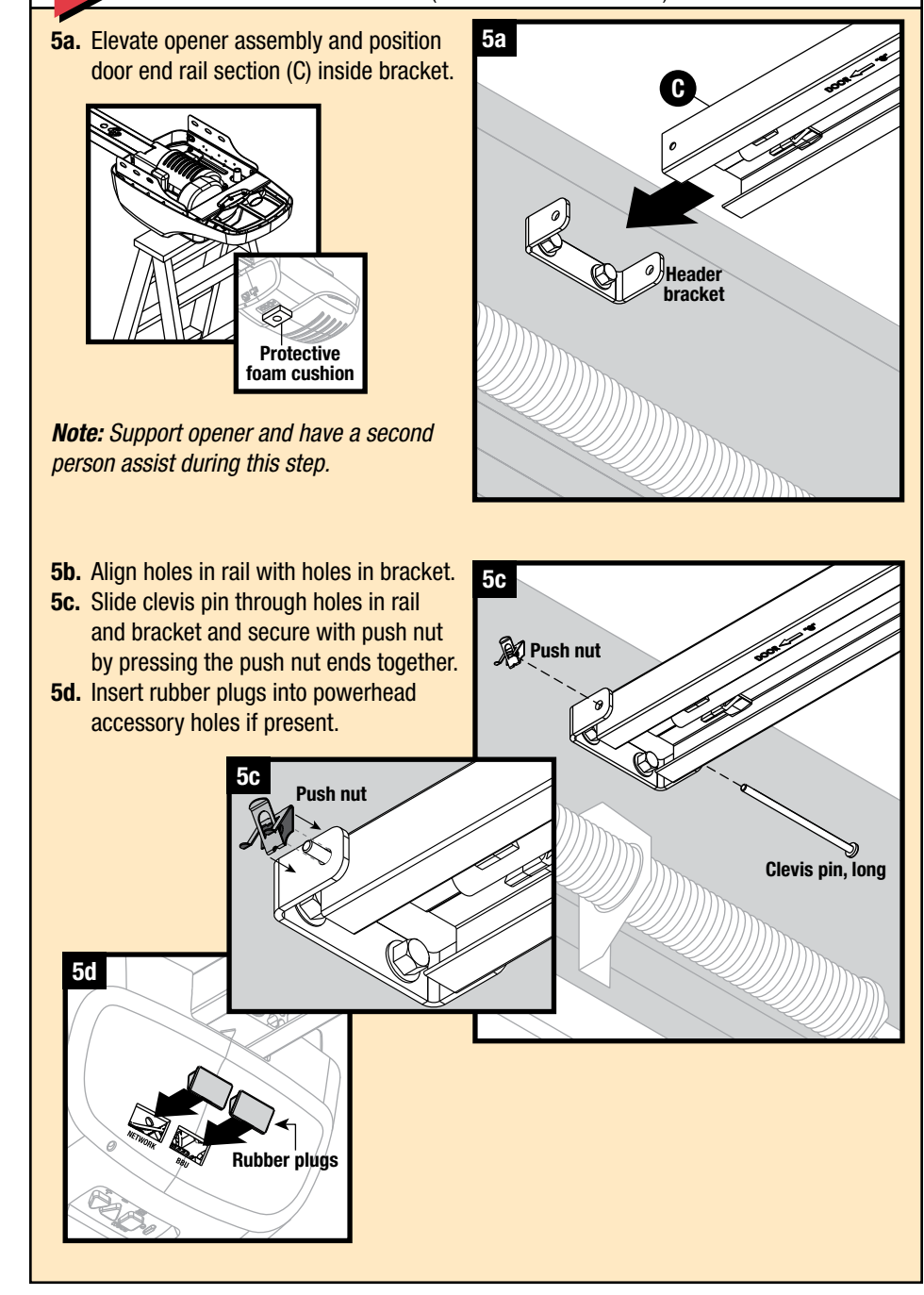
## 2 Adjusting Rail Tension



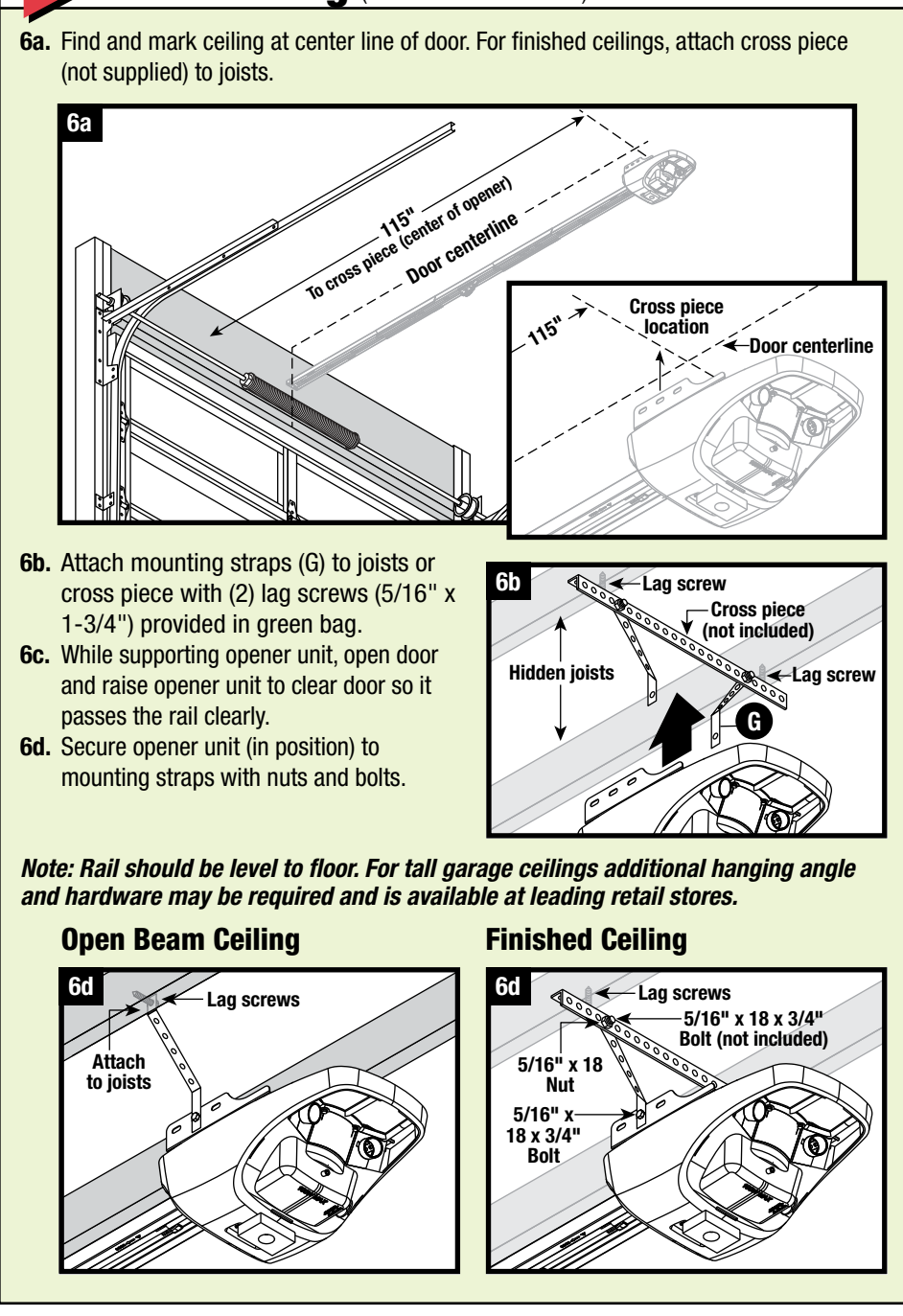
## 3 Attaching Rail to Powerhead (BLUE BAG hardware)



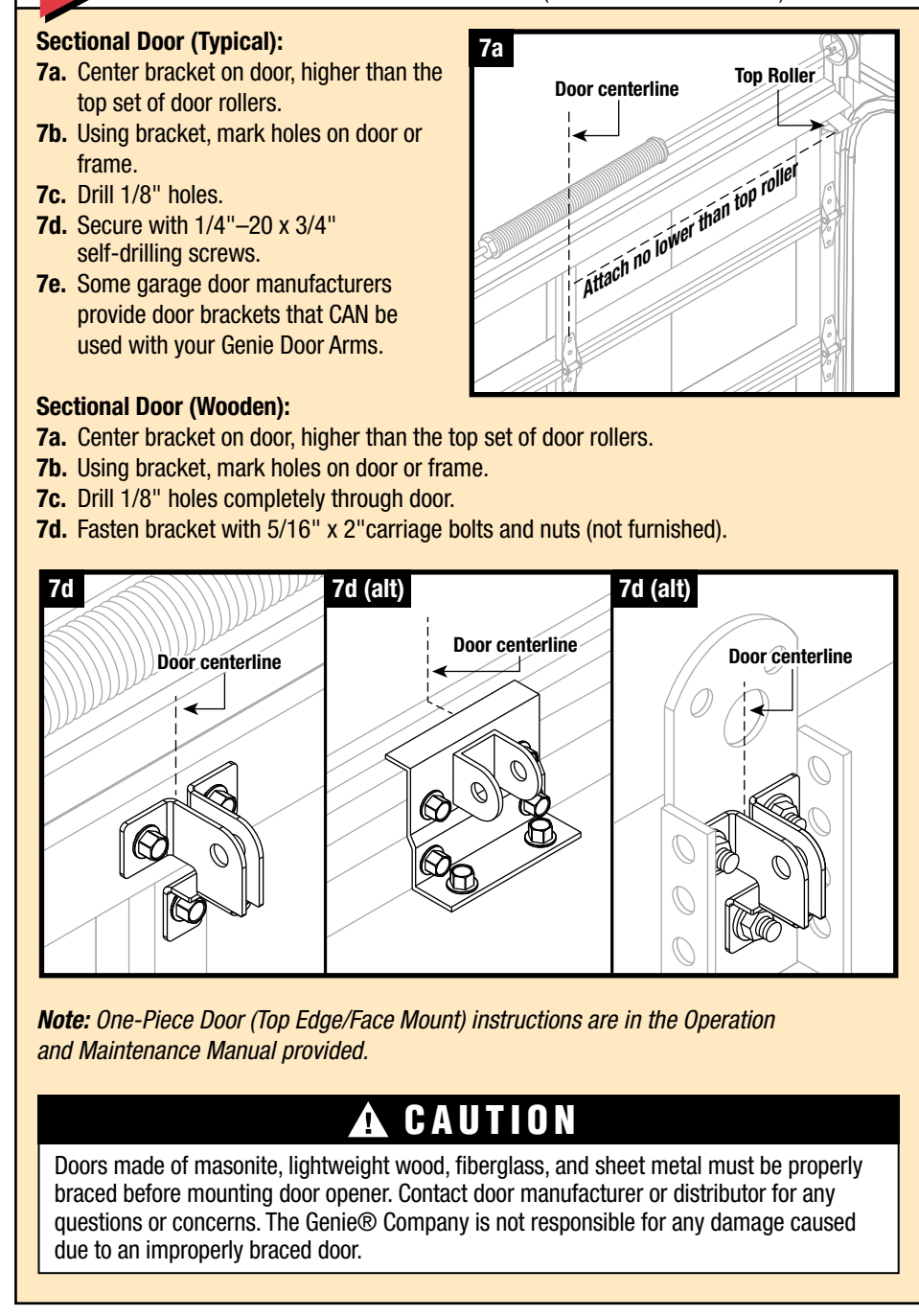
## 5 Attaching Rail to Bracket (ORANGE BAG hardware)



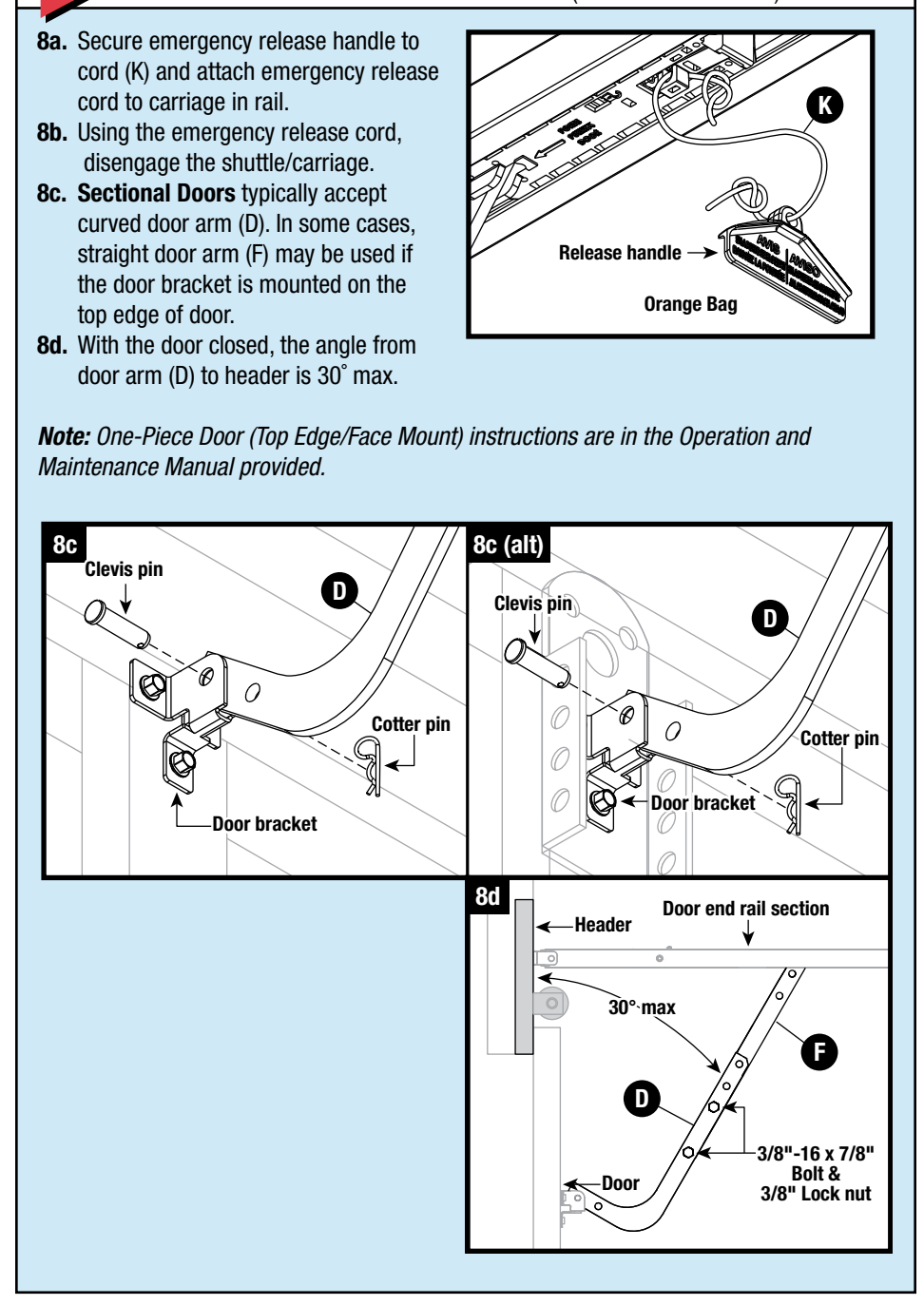
## 6 Mounting Powerhead to Ceiling (GREEN BAG hardware)



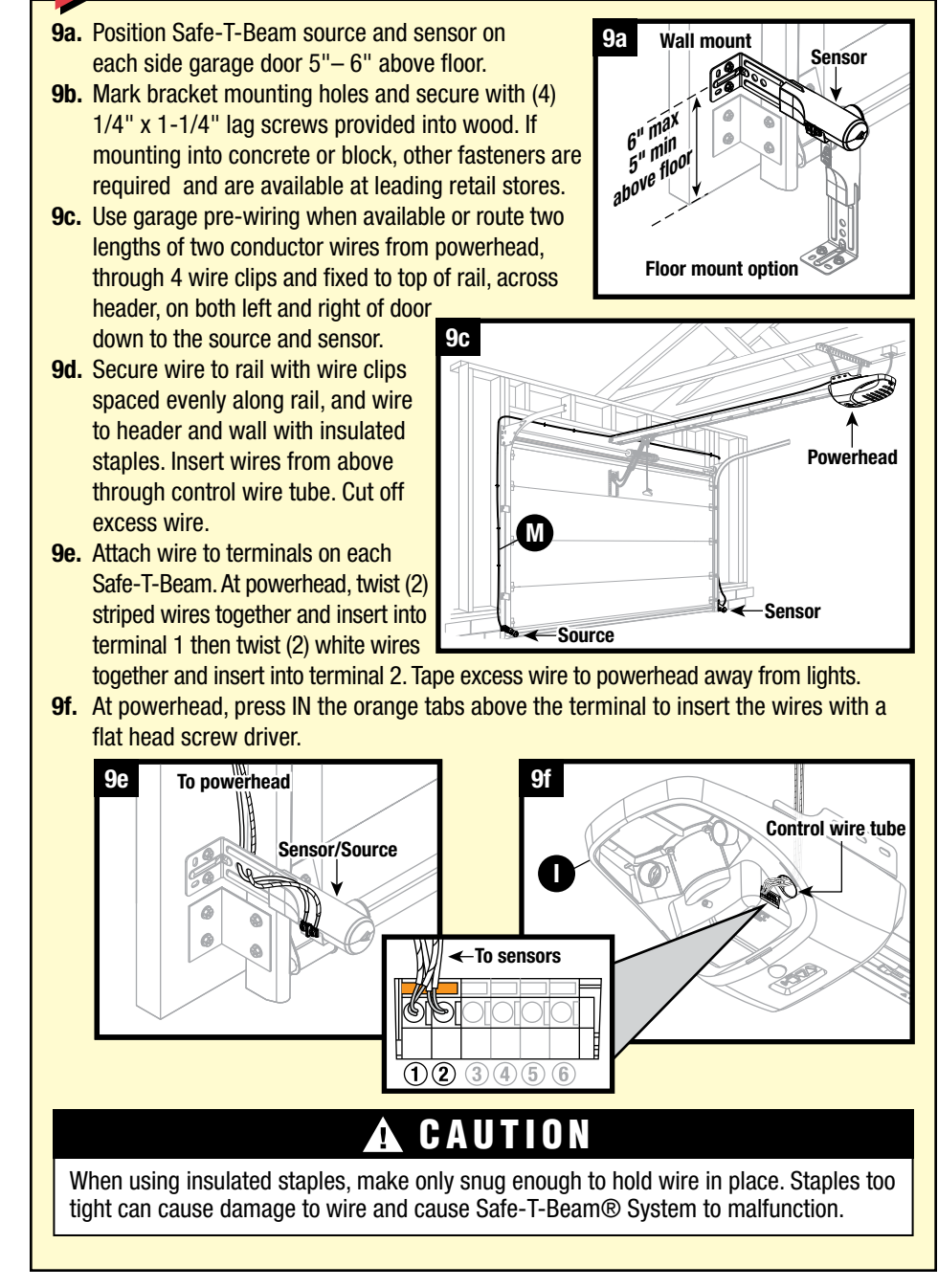
## 7 Attaching Door Bracket to Door (ORANGE BAG hardware)



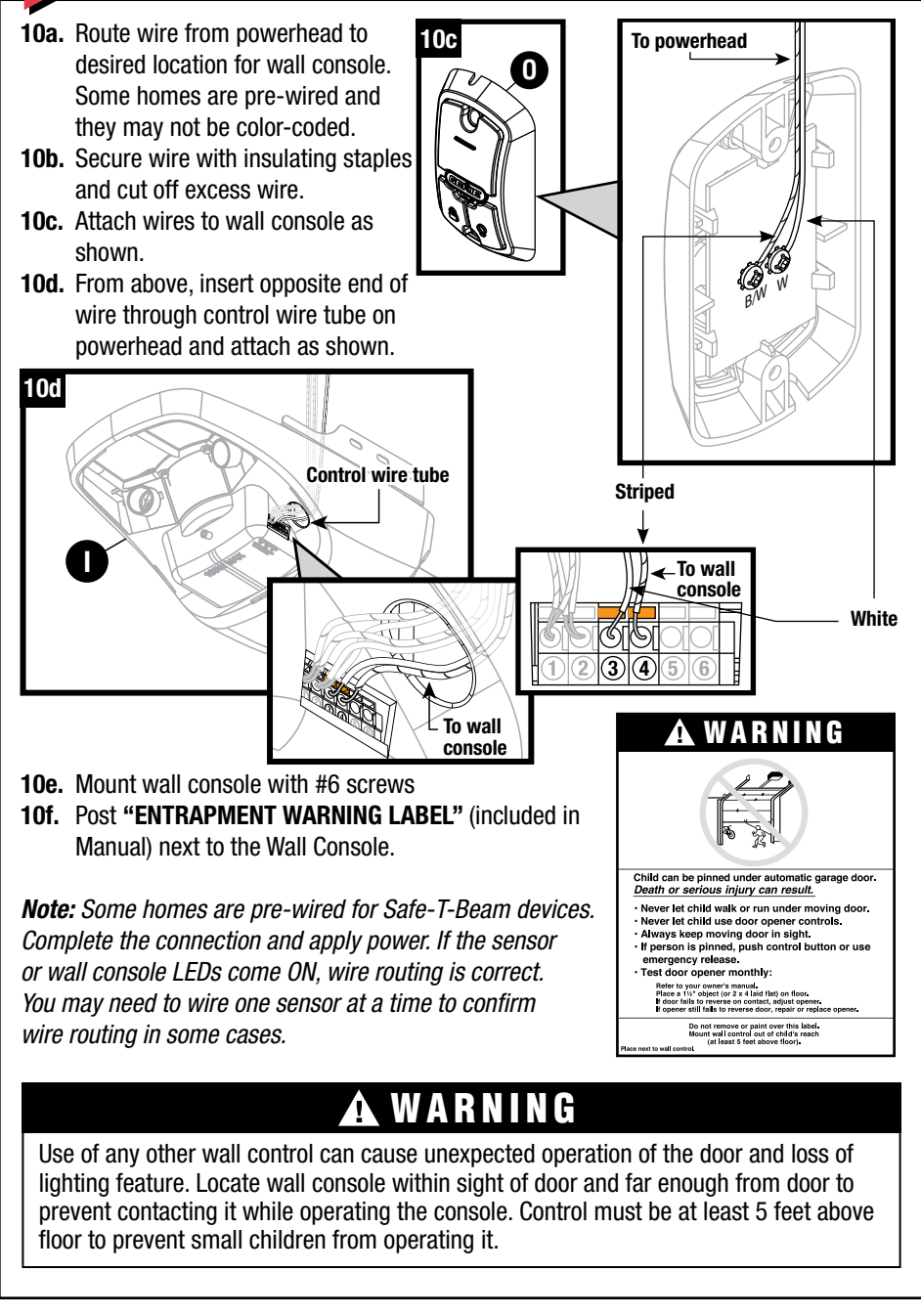
## 8 Attaching Door Arm to Door Bracket and Shuttle (BLUE BAG hardware)



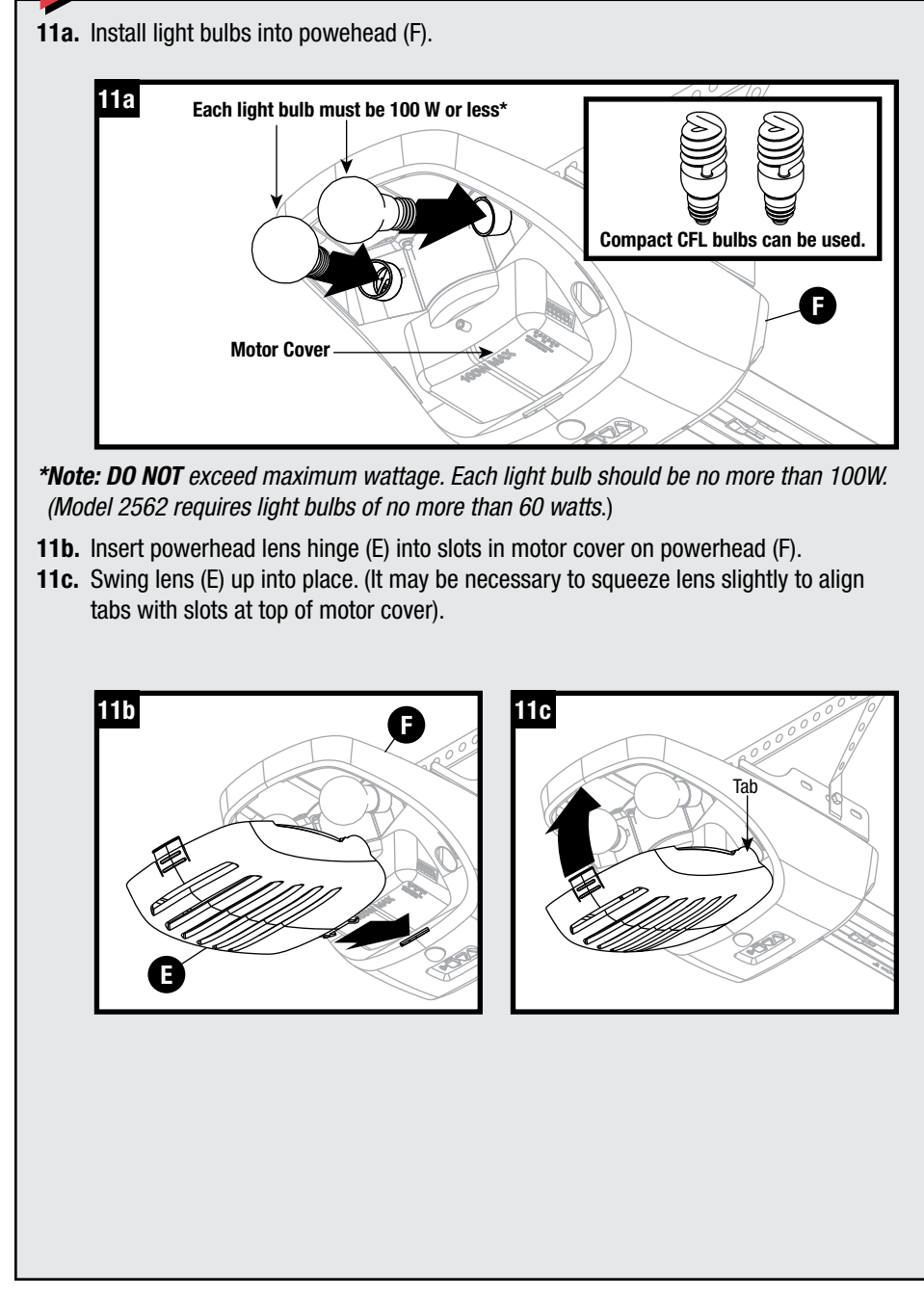
## 9 Installing Safe-T-Beam® (YELLOW BAG hardware)



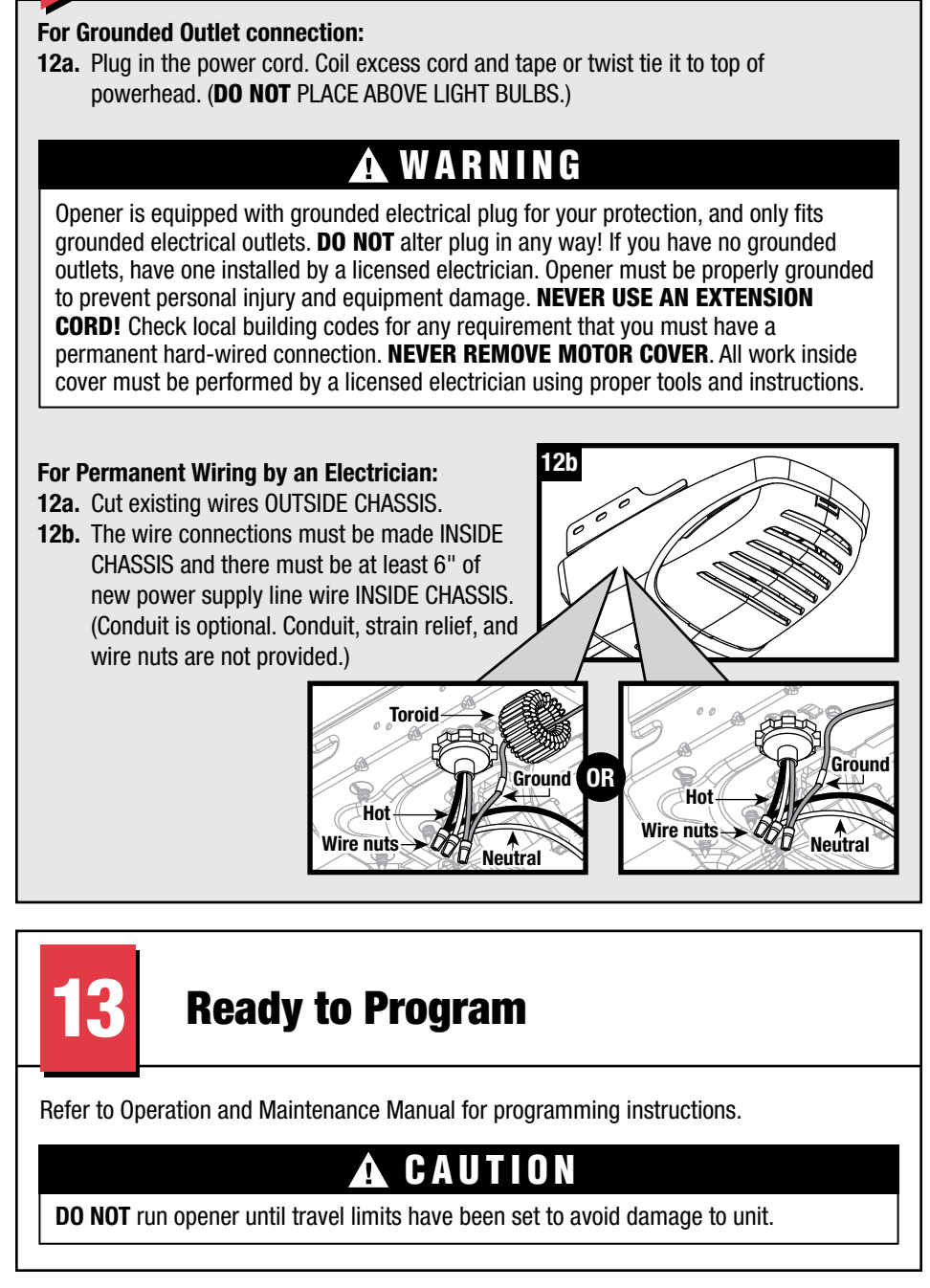
## 10 Installing Wall Console (CLEAR BAG hardware)



## 11 Light Assembly



## 12 Connecting Power



### CAUTION

When using insulated staples, make only snug enough to hold wire in place. Staples too tight can cause damage to wire and cause Safe-T-Beam® System to malfunction.

### WARNING

Use of any other wall control can cause unexpected operation of the door and loss of lighting feature. Locate wall console within sight of door and far enough from door to prevent contacting it while operating the console. Control must be at least 5 feet above floor to prevent small children from operating it.

### 13 Ready to Program

Refer to Operation and Maintenance Manual for programming instructions.

### CAUTION

DO NOT run opener until travel limits have been set to avoid damage to unit.