



# Specifications

## 9500 Series Single-Handle 3-Spray Tub and Shower Faucet

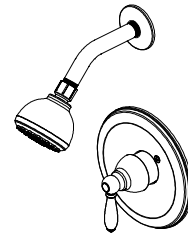
MODEL	SKU#	FINISH
873W-3001	648-406	Polished Chrome
873W-3004	648-412	Brushed Nickel PVD

### FEATURES

- Single Handle Tub and Shower Faucet
- Pressure Balance Valve with Integrated Stops
- Ceramic Valve Cartridge
- Adjustable Temperature Limit Stop to Control Maximum Hot Water Temperature
- 120° Maximum Handle Rotation
- ABS Single Functions Showerhead
- Shower Face Size:  $\phi$  80 mm
- Includes 4 3/4" Diverter Tub Spout
- With Plug Applicable For Shower Only Installation
- 1/2" IPS Connections
- Showerhead Max. Flow Rate: 2.0 Gallons Per Minute at 80 PSI
- Tub Spout Min. Flow Rate: 2.4 Gallons Per Minute at 20 PSI

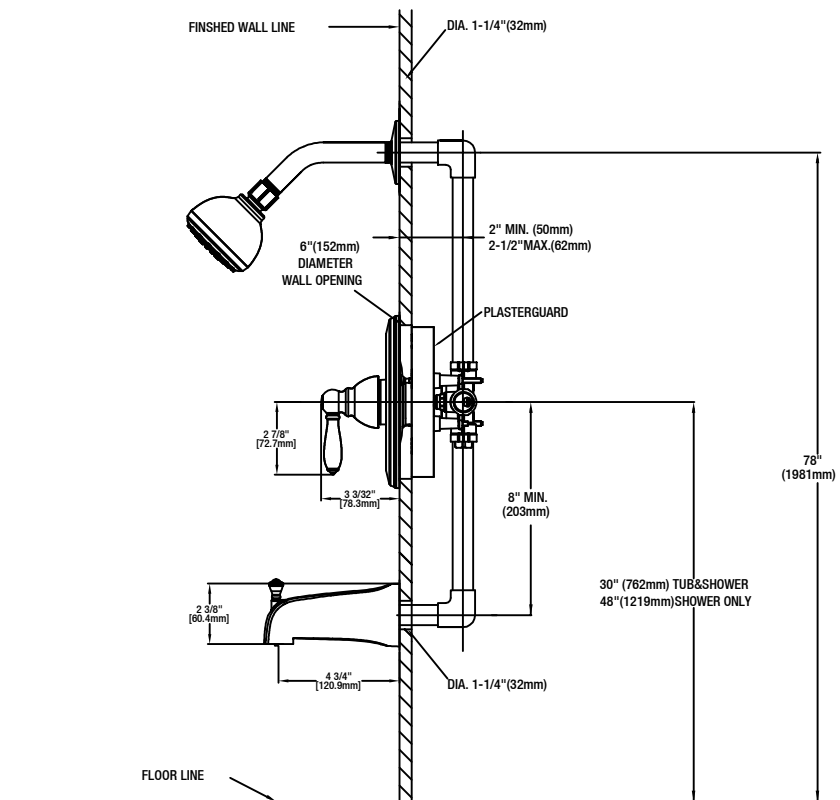
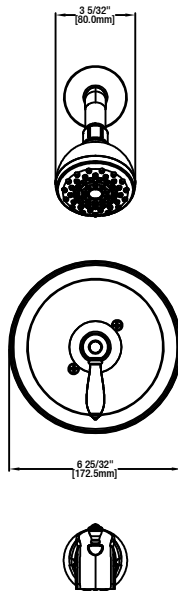
### CODE COMPLIANCE

- IAPMO Certified: ASME A112.18.1/CSA B125.1
- EPA WaterSense Certified
- ADA Compliant



### WARRANTY

- Limited Lifetime Warranty



### INSTALLATION DIMENSIONS