



LZ480 Series

Wiring supplies
as required by
electrical code

TOOLS AND MATERIALS REQUIRED:



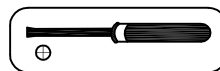
Wrench



Pliers



Wire Cutters



Philips Screwdriver

SAFETY PRECAUTIONS.

1. Turn off power at main electrical service box before starting installation.
2. Electrical connections must comply with local code ordinances or national electrical codes.

INSTALLATION.

Step 1: Attach bracket to electrical box using the box screws or mounting screws provided with your fixture.

Step 2: Assembly. Your fixture comes ready for quick assembly. The rods included are 6", 12" and 18" for a total length of 36".

Choose the desired length you want and remove rods from wire if needed. Use the threaded pipes in each rod to join the lengths together. Connect rods to top loop using threaded pipe provided.

If you wish to add chain connect chain between the two loops and feed wire through chain links then through loop in canopy. If no chain is required simply close the single link connecting the two loops and feed wire through loops and canopy. (Fig 1)

Step 3: Connect ground wire from fixture to ground screw in electrical box or to ground wire (bare copper) wire from electrical box using orange wire nut (provided)

Connect white wire from fixture to white wire in electrical box using provided wire connector. Connect black wire from fixture to black wire in electrical box also using provided connector (orange) Tuck all exposed wiring into electrical box. (Fig 2)

Step 4: Carefully place canopy over mounting screws checking that no wires are exposed or pinched between ceiling and fixture canopy. Use cap nuts provided to secure fixture to bracket.

Step 5: Install proper type and wattage of bulb as per label on fixture or socket. (Fig 3)

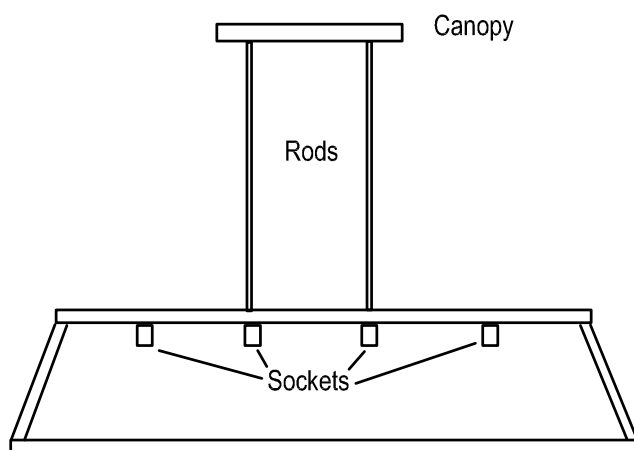
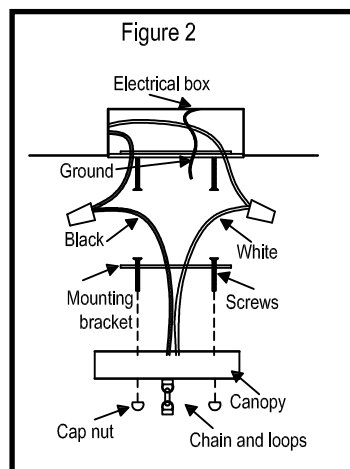
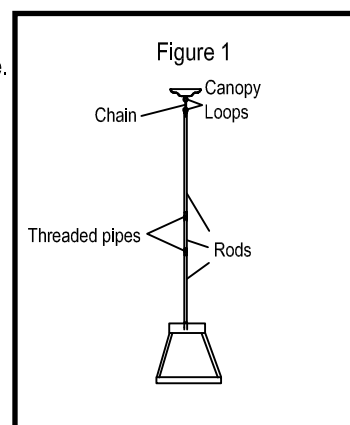
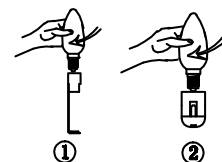


Figure 3

Bulb installation

Hold bulb firmly. Take care to not touch the socket as this may result in electric shock. Turn bulb clockwise until firm.



Your installation is now complete, restore power and enjoy your new fixture.

Care and Cleaning

Always turn off power at the source (main electrical panel) before any type of cleaning or maintenance.

The fixture can be cleaned using a soft dry cloth. Never use abrasive pads or water to clean electrical fixtures.