

Door Installation Guide

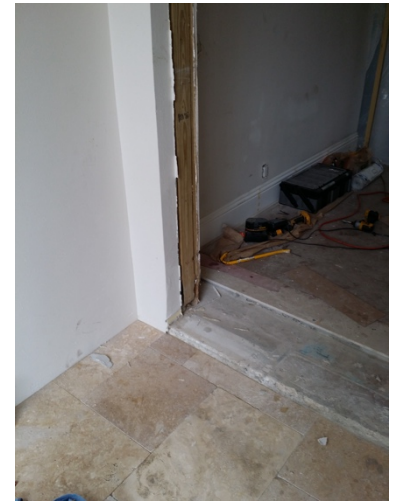
1. Your rough opening (r/o) or buck to buck ([picture 1](#)) opening should be at least 1" wider than the overall jamb width and ½" taller than the jamb height. This will give you ½" shim space on the left, the right, and the top of the frame to make it plumb, square and true for even reveals on doors.
2. Buck system or framing that you will be securing the door frame to should be solid and free of damage (dry rot etc.). The same applies if the frame is to be mounted directly to masonry or block wall.
3. Take note of any alarm or security wires ([picture 2](#)) that will have to be drilled / installed into the frame before installing frame.
4. Place the door frame or jamb into your rough opening making sure the threshold is seated flat on the floor ([picture 3](#)), keeping in mind that the exterior door sill may not be level with the interior flooring and some flooring might need to be cut back or sill raised.



Picture 1



Picture 2



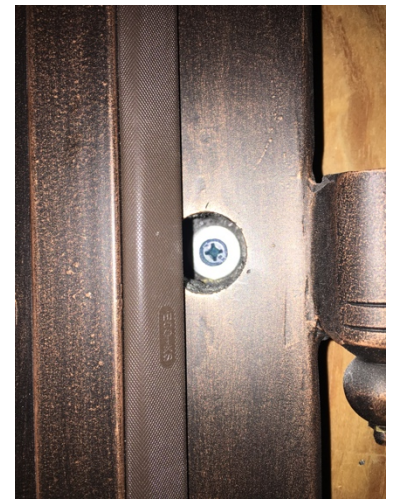
Picture 3



Picture 4



Picture 5



Picture 6

5. After shimming frame/jamb to your rough opening ([picture 4](#)) making sure its plum, square, and true predrill for lag screws ([picture 5](#)) or Tapcons ([picture 6](#)) depending on your application.

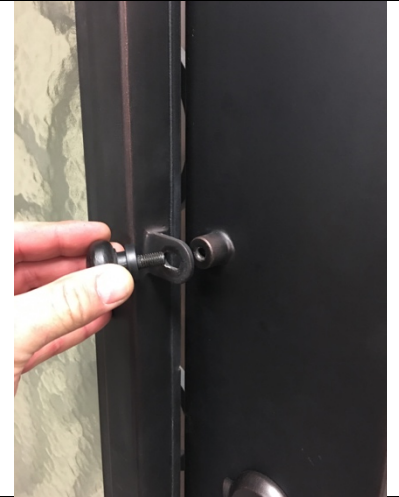
6. You are ready to hang the doors on the hinges. Make sure the the brass washers are on the hinge pins (picture 6a). We recommend carefully removing the operable glass panes from the door to make them lighter before lifting the door onto the hinges (picture 6b). When hanging the door on it's hinges it is recommend to have a minimum of 2-3 people being careful of hand placement to not damage scroll work. Once the doors are on the hinges you can replace the glass panels on their hinges and secure them with the cam locks (picture 7).
7. Now your ready to install your custom pull handles into their pre-drilled mounting holes. Your door should have shipped with a Baldwin deadbolt pre-installed with the keys located in the box with your handles (picture 8).



Picture 6a



Picture 6b



Picture 7



Picture 8



Picture 9

8. Final detail will be inserting the mounting hole caps into the frame to cover the screw holes (picture 9). Mounting hole caps are also located in the pull handle box along with your deadbolt keys