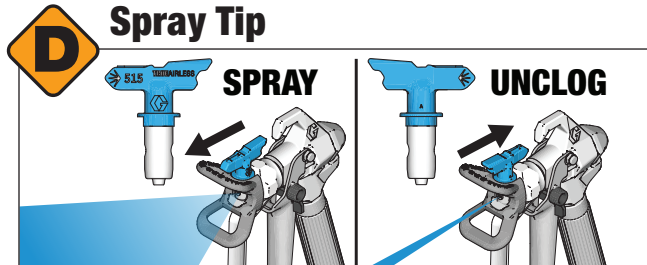
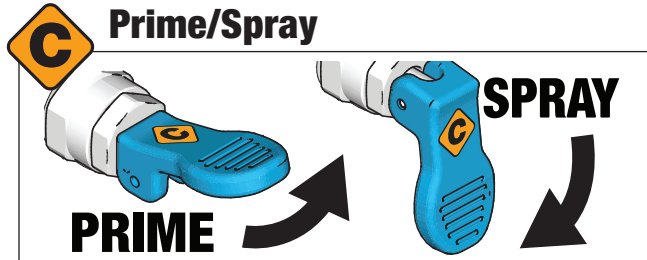
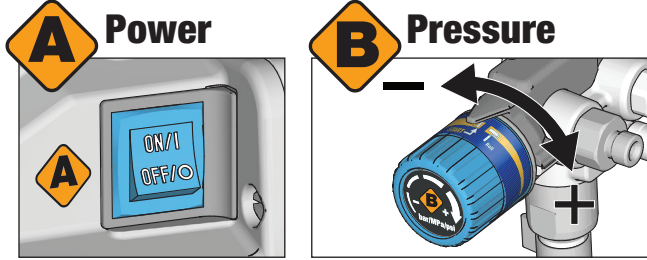




# MAGNUM QUICK GUIDE

## KNOW YOUR CONTROLS



Read Owner's Manual for complete instructions and warnings. This quick guide is not a substitute for reading and understanding all instruction manuals and warning labels supplied with the equipment. Manuals are available at [magnum.graco.com](http://magnum.graco.com)

### WARNING



Follow pressure relief procedure and wear protective equipment including but not limited to protective eye wear.



**SKIN INJECTION HAZARD:** Keep clear of spray tip and leaks. Engage trigger lock when not spraying.



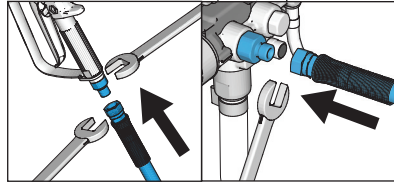
**FIRE AND EXPLOSION HAZARD:**

Follow fire and explosion warnings as listed in your manual.

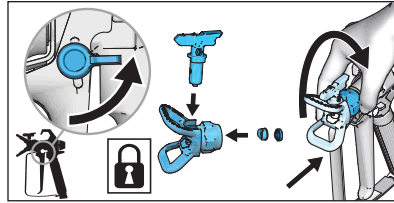


**READ AND UNDERSTAND ALL LABELS AND INSTRUCTION MANUALS BEFORE USE. FAILURE TO FOLLOW ALL WARNINGS CAN RESULT IN SERIOUS INJURY, AMPUTATION, OR DEATH.**

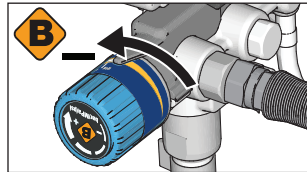
## SET UP



**1** If needed, connect hose to gun. Remove red cap, then connect hose to sprayer. Tighten securely.



**2** Engage Trigger Lock. Assure Spray Tip is properly inserted into the Spray Tip Guard, and the Spray Tip Guard assembly is tightened securely to gun.

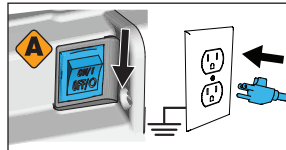


**3** Turn the Pressure Control Knob to the lowest setting.



[magnum.graco.com/quickassembly](http://magnum.graco.com/quickassembly)

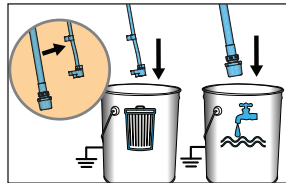
## START UP



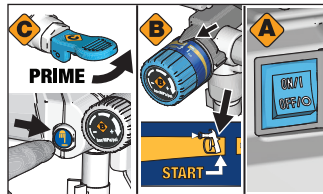
**1** Turn Power Switch OFF and plug sprayer into a grounded outlet.



[magnum.graco.com/quickstart](http://magnum.graco.com/quickstart)



**2** Separate Drain Tube (smaller) from Suction Tube (larger). Place Drain Tube in a waste pail. Submerge Suction Tube into pail filled with water for water-based material, or mineral spirits if spraying oil-based material.



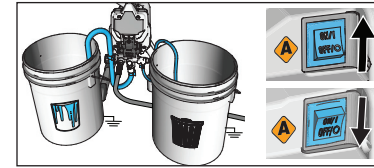
**3** Lift the Prime/Spray Valve to the PRIME position. Press the PushPrime button\* twice to loosen inlet valve ball. Turn Pressure Control Knob to START position. Turn Power Switch ON.

\* Not available on Project Painter Plus™ model.

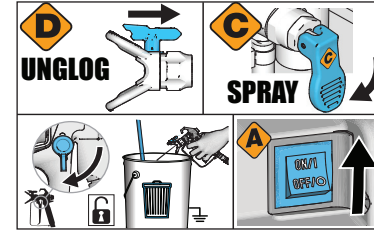


**4** Allow fluid to flow up the Suction Tube and out of Drain Tube for 30-60 seconds. Turn Power Switch OFF.

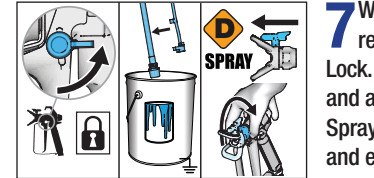
## START UP



**5** Submerge Suction Tube into paint. Turn Power Switch ON and watch for paint to come out of the Drain Tube. Turn Power Switch OFF.



**6** Rotate Spray Tip to UNCLOG Position. Disengage Trigger Lock. Point gun into waste pail, pull and hold trigger. Lower Prime/Spray Valve to SPRAY position and turn Power Switch ON.

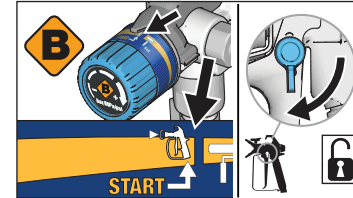


**7** When paint comes out of gun, release trigger. Engage Trigger Lock. Transfer Drain Tube to paint pail and attach to Suction Tube. Rotate Spray Tip back to SPRAY position and ensure Spray Tip Guard is tight.

## YOU ARE NOW READY TO SPRAY!

## SPRAYING

**1** Turn Pressure Control Knob to the START position. Disengage the Trigger Lock.



**2** Increase Pressure Control Knob if needed until spray is even and without gaps at edges.

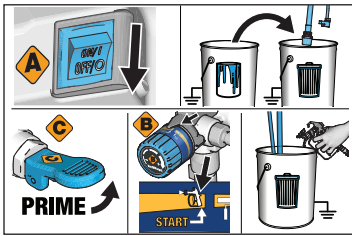


[magnum.graco.com/howtospray](http://magnum.graco.com/howtospray)

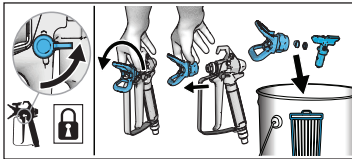
<p><b>Good Spray Pattern</b></p> <p>12 in. (30 cm) from surface</p>	<p>Aim Gun here to overlap stroke by 50%</p> <p>Pull trigger after starting stroke. Release trigger before end of stroke.</p>
<p><b>TAILS - Gaps at edges</b></p> <p>Pressure too low Tip Wear</p>	<p><b>SPRAY TIP Orientation</b></p> <p>Horizontal</p> <p>Vertical</p>

# CLEANUP

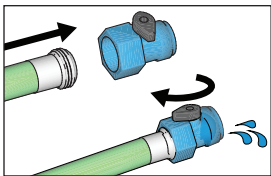
Garden hose cleanup for water-based paints only. See Owners Manual for pail cleanup or oil-based materials.



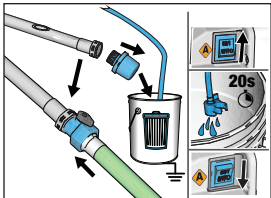
- 1 Turn Power Switch OFF. Place Suction and Drain Tubes in waste pail. Lift Prime/Spray Valve to PRIME. Turn Pressure Control Knob to START position. Trigger gun into a waste pail.



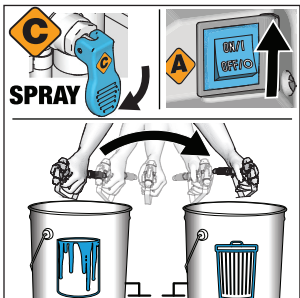
- 2 Engage Trigger Lock. Remove Spray Tip Guard assembly from gun and place in waste pail.



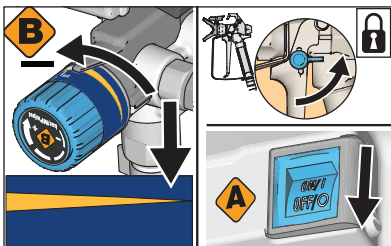
- 3 Screw Power Flush Valve (included with sprayer) to a garden hose. Turn on water. Open Power Flush Valve. Rinse paint off Suction and Drain Tubes, inlet screen and Spray Tip and Spray Tip Guard. Close Power Flush Valve.



- 4 Unscrew inlet screen and place in waste pail. Thread Power Flush Valve to Suction Tube. Open Power Flush Valve. Turn Power Switch ON and let water run through Drain Tube for 20 seconds. Turn Power Switch OFF.



- 5 To save paint in hose, disengage Trigger Lock and trigger gun into paint pail, lower Prime/Spray Valve to SPRAY and turn Power Switch ON. When water comes out of gun, keep gun triggered and aim into waste pail. Continue to flush until water runs clear.



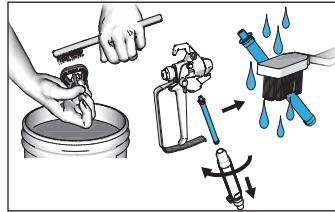
- 6 Turn Pressure Control Knob to lowest setting and release trigger. Engage Trigger Lock. Lift Prime/Spray Valve to PRIME and turn Power Switch OFF.

# CLEANUP

continued



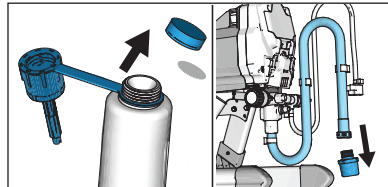
magnum.graco.com/quickcleanup



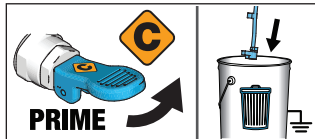
- 7 Clean Spray Tip, Spray Tip Guard and inlet screen with brush. Remove gun filter and clean. Reassemble gun filter, Spray Tip and Spray Tip guard.

# STORAGE

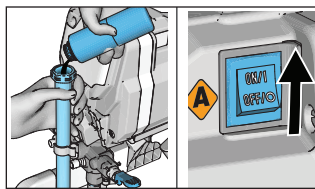
Perform CLEANUP before STORAGE.



- 1 Remove Pump Armor bottle cap and foil seal. If needed, unscrew inlet screen from Suction Tube.



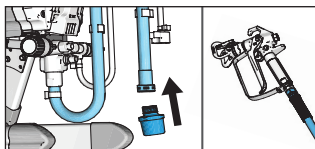
- 2 Lift Prime/Spray Valve to PRIME. Place Drain Tube in waste pail. Turn Pressure Control Knob to START position.



- 3 While holding the Suction Tube above the sprayer, pour approximately 2 ounces (1/4 cup) of Pump Armor into the Suction Tube and turn Power Switch ON.



- 4 When Pump Armor is flushed through the sprayer, turn Power Switch OFF. Replace and tighten child-proof cap for storage.



- 5 Screw inlet screen back to Suction Tube. Ensure that spray gun and hose stay attached to sprayer.

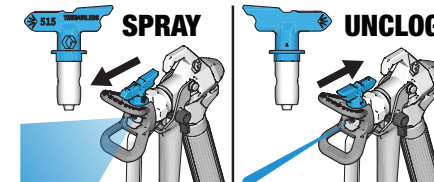


- 6 Lower Spray/Prime valve to SPRAY position for storage. Turn Power Switch OFF and unplug sprayer from outlet.

# REVERSIBLE SPRAY TIPS

Your sprayer is shipped with a Spray Tip to spray paint. If you are spraying stain see the store associate to purchase a smaller Spray Tip size.

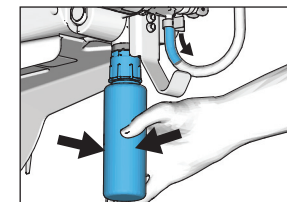
If your sprayer stops spraying, you most likely have a Spray Tip clog. Engage Trigger Lock and reverse the Spray Tip to the UNCLOG position. Disengage Trigger Lock and spray into a waste area to remove the clog. Engage Trigger Lock and return the Spray Tip to SPRAY position. See Owner's Manual for more information.



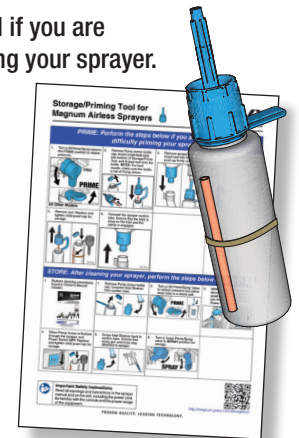
magnum.graco.com/rac

# STORAGE/PRIMING TOOL

Use the Storage/Priming Tool if you are experiencing difficulty priming your sprayer.



See your Storage/Priming Tool Instruction Guide for information on how to use the Priming/Storage Tool.



QUESTIONS?  
888-541-9788  
magnum.graco.com/aplus

