

# Wall Pack 250w MH Equivalent

7800 lm | 120-277VAC | Model 53307161 | Part WP-78-850-MV

- > Energy Saving 60 Watt Integrated LED
- > Daylight 5000K CCT
- > Lasts 45 years\* or 50,000 Hours Continuous Use
- > Wall Mount Installation
- > Full Cut-off
- > 5 Year Limited Warranty



## SPECIFICATIONS

<b>Model</b>	53307161
<b>Part</b>	WP-78-850-MV
<b>Description</b>	Wall Pack 250w MH Equivalent, Photocell Compatible
<b>Input Voltage (VAC)</b>	120-277
<b>Wattage</b>	60
<b>Dimmability</b>	Non Dimmable
<b>Average Rated Life<sup>1</sup></b>	50,000 hours
<b>Typical Lumens<sup>2</sup></b>	7800
<b>CCT<sup>3</sup></b>	5000K
<b>Location Rating</b>	UL Wet
<b>CRI<sup>4</sup></b>	≥80
<b>Beam Angle</b>	100°
<b>Operating Temperature</b>	Min -40°F (-40° C), Max 113°F (45° C)
<b>Power Factor</b>	>0.9
<b>R9</b>	10
<b>DUV</b>	0.00067
<b>Operating Frequency (Hz)</b>	50/60

1 Hours lifetime with 70% lumen maintenance

2 Thermally stable typical lumens (±10%)

3 Thermally stable CCT (±10%)

4 Color rendering index/Ra

### TO ORDER:

[www.ETiSSL.com](http://www.ETiSSL.com)

Call: 1.855.ETi.SSLI

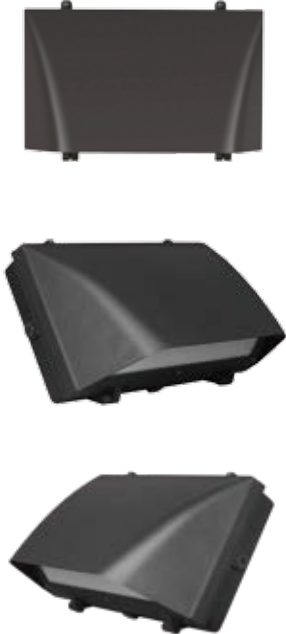
1.855.384.7754





# Wall Pack 250w Equivalent

7800 lms | 120-277VAC | Model 53307161 | Part WP-78-850-MV



## SHIPPING INFORMATION

Model	53307161
Part	WP-78-850-MV
UPC	849489008837
Product Dimensions (L x W x H in.)	16 x 10 5/8 x 7 7/8
Product Dimensions (L x W x H cm.)	40.5 x 27.0 x 20.0
Product Weight (lbs.)	9.36
Inner Carton Quantity	N/A
Inner Carton Bar Code	N/A
Inner Carton Dimensions (L x W x H in.)	N/A
Inner Carton Dimensions (L x W x H cm.)	N/A
Inner Carton Weight (lbs)	N/A
Master Carton Quantity	1
Master Carton Bar Code	50849489008832
Master Carton Dimensions (L x W x H in.)	18 x 12 1/8x 10
Master Carton Dimensions (L x W x H cm.)	44.8 x 30.8 x 25.2
Master Carton Weight (lbs)	11.09
Pallet Quantity	64

## AVAILABLE ACCESSORIES

Model #	Part #	Description
20170001	PE-MV-01	Photocell for Wall Pack

This device complies with part 15 of the FCC Rules. Operation is subject to the following two conditions: (1) This device may not cause harmful interference, and (2) this device must accept any interference received, including interference that may cause undesired operation. For FCC Part 15 user information, Please see [www.ETiSSL.com/fcc15b](http://www.ETiSSL.com/fcc15b)

**TO ORDER:**  
[www.ETiSSL.com](http://www.ETiSSL.com)  
Call: 1.855.ETi.SSLI  
1.855.384.7754

Manufactured by Elec-Tech  
International Co., Ltd  
ETi Solid State Lighting, Inc.  
720 Corporate Woods Parkway  
Vernon Hills, IL 60061  
Phone: 855.384.7754  
Fax: 847.383.6256