



FAUX BEAMS INTALLATION INSTRUCTIONS

Painting Unfinished Faux Wood Beams

Beams products may be painted before or after installation, depending upon your application. We recommend the use of a high-quality latex paints (acrylic paints). A water-based primer would be ideal as well.

Staining Unfinished Faux Wood Beams

Our Unfinished faux beams may be stained to create a realistic look. We recommend the use of solid color deck **gel stain** in a variety of colors as desired. Apply the **gel stain** with a brush or sponge, coating the product with your base color. Next, using a wet sponge, wipe off the appropriate amount of stain to reach the desired shade. Allow this coat to completely dry, repeating the process with as many colors as you wish.

Other options are to use a **water-based stain**. So, a water-based primer would be recommended before staining.

Important Notice: Before starting a painting or staining project on your actual unfinished beams, please test the paint or your stain option on a small piece of faux beam.

If you would prefer your beams delivered finished, please select the options available.

Installation

Faux wood Beams can be installed using standard woodworking tools. Polyurethane foam will cut clean with the use of a table saw, miter saw, band saw or hand saw. We recommend the use of a miter box to make sure your cuts are straight. Because Polyurethane foam will expand and contract slightly with temperature variations, it is important to acclimate the products to the location of installation for approximately 10-12 hours before installing.

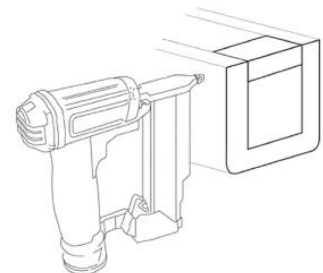
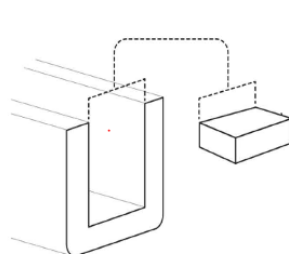
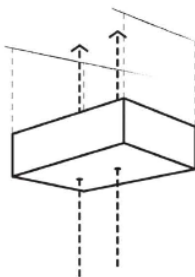
All products should be installed with an adhesive and screws. We do not recommend the use of nails unless you use a small nail gun. Use of a hammer is not recommended under any circumstances.

Use a high quality Premium adhesive for Polyurethane such as PL premium or Liquid Nails. It also allows the Polyurethane to expand and contract as necessary over time. If you are in high humidity location, you can opt to pre-drill and fill holes with adhesive prior to inserting the screw. Patch all screw holes, dings and dents with a non-shrinking wood putty or polyurethane filler. You may want to tint the putty prior to application.

The Polyurethane Beam products will not provide any structural support and are decorative only. As with all plastics, Polyurethane foam is flammable. As a general rule there are no restrictions regarding the use of Polyurethane for residential applications. It is the consumer's responsibility to abide by any local and/or state regulations.

Tips

Screw wood blocks to the ceiling every 2-3 feet. Apply a Polyurethane construction adhesive to the beam and hold the beam up to the ceiling over the wood blocks. Screw beam to the blocks on both sides of the beam.



American Pro Décor assumes no liability for improper Installation.