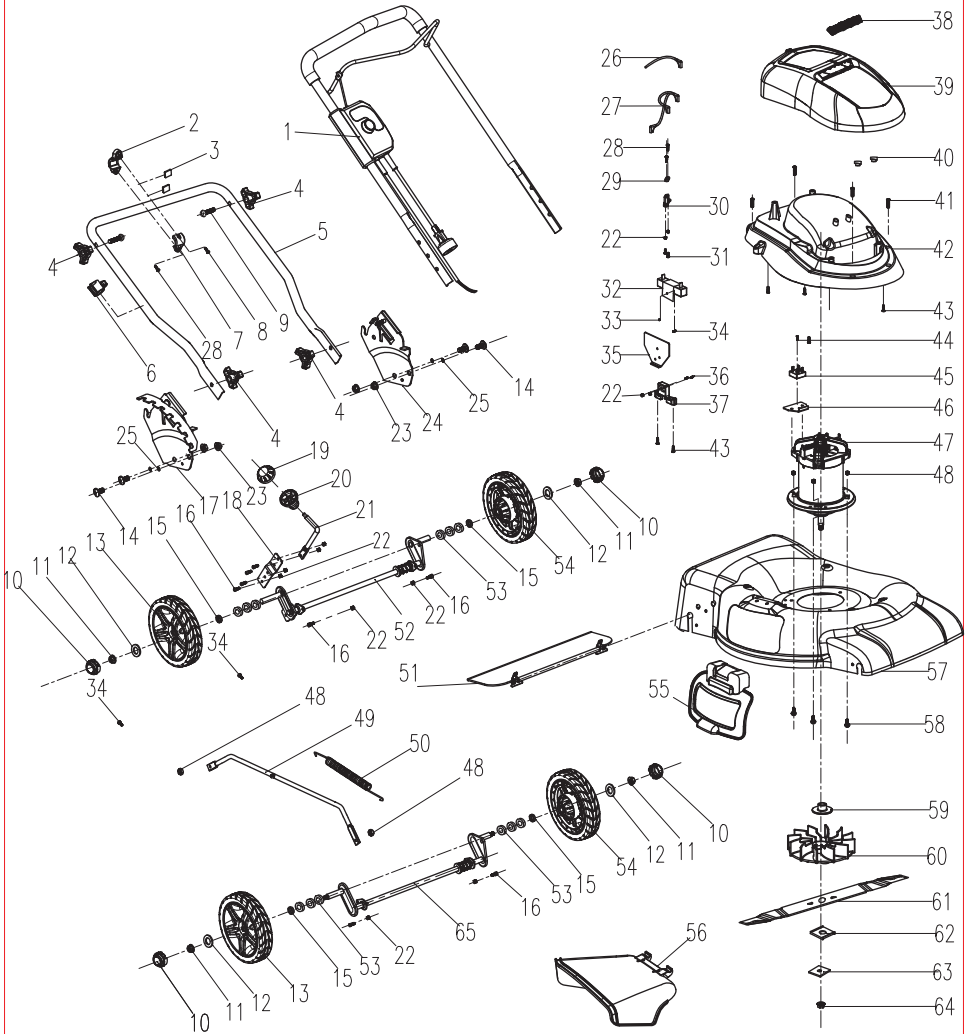


EXPLODED VIEW/PARTS LIST

MODEL 50518



EXPLODED VIEW/PARTS LIST

Key No.	Part No.	Description	Qty.
1	8440-510408	upper handle assy	1
2	8007-516401	cord guide upper cover	1
3	8336-516411	cord guide washer	2
4	8313-510502	knob	4
5	8001-510404	lower handle	1
6	8007-517001	cord guide	1
7	8007-516402	cord guide lower cover	1
8	8SJAB50-50Q	self tapping screw	1
9	8206-517001	bolt	2
10	8020-510407	wheel cover	4
11	8NH-08D	flange nut 08D	4
12	8325-532405	gasket	4
13	8121-510304	right wheel	2
14	8SBCD10-20D8.8	inner-hexagon screw 20D	4
15	8224-510501	axle sleeve	4
16	8SKCD05-14Q12.9	socket head cap screw 5x 14	8
17	8321-510301	height adjustment bracket right	1
18	8321-517009	spring pad	1
19	8001-510506	height adjustment handle cover	1
20	8001-510507	height adjustment handle	1
21	8087-510504	height adjustment lever	1
22	8NH-05Q	hex lock nut 05Q	12
23	8NG-10D02	flange nut 10D	4
24	8321-517003	height adjust bracket (left)	1
25	8WS-10Q	spring pad	4
26	8413-517001	connection wire 1	1
27	8413-517002	connection wire 2	1
28	8SJAB40-14Q	self tapping screw 4x 14	3
29	8184-516201	power cord clamp plate	1
30	8141-517001	wire clamp plate	1
31	8SJAD05-10Q8.8	machine screw 5*10	2
32	8417-516201	resistance	1
33	8NA-04Q01	hex lock nut	1
34	8SJGN04-14Q12.9	3 in 1 screw 4x 14	1
35	8183-516203	resistance heat sink	1
36	8SJAD05-16Q	Philips self-tapping screw 5*16	2
37	8291-517001	resistance support	1
38	8181-510301	shutter	1
39	8020-510301	motor vent	1
40	8341-516402	rubber cap	2
41	8206-510401	locking screw	4
42	8024-510301	motor cover	1
43	8SJAB50-16Q	self tapping screw 5*16	6
44	8SJAB50-25Q	self tapping screw 5*25	1
45	8427-517001	electric bridge	1
46	8183-516202	radiator resistance	1
47	8401-517001	motor	1
48	8NH-06Q	hex lock nut 06Q	5
49	8087-517002	link bar	1
50	8342-517002	compression spring	1
51	8440-510498	rear flap assy	1
52	8440-517302	rear wheel axle assy	1
53	8202-517201	adjusting shim	12
54	8121-510303	left wheel	2
55	8440-510302	side discharge door assy.	1
56	8020-517003	side discharge deflector	1
57	8006-517003	deck	1
58	8SQDD06-16D8.8	flange bolt 16D	3
59	8224-516202	spindle guard	1
60	8403-517001	fan	1
61	8231-517001	blade	1
62	8181-517002	blade insulator	1
63	8321-517006	spacer	1
64	8207-517001	blade nut	1
65	8440-517301	front wheel axle assy	1