



Installation Manual & Operation Instructions



BB- *i*3000

- This unit is specially manufactured for household use.
- Please read all operating instructions before installation.

Notes :

1. This product should be installed according to this manual's directions.
2. Please keep this manual for future reference.
3. Please register the attached Warranty upon purchase of bidet.
4. Observe all precautions as noted on this manual.



Properly installed and maintained, your new bidet should provide years of optimal operations.
Read this manual before installation.

Contents

IMPORTANT INFORMATION	-----	4
IDENTIFICATION	-----	8
GENERAL PRECAUTIONS	-----	9
OPERATION	-----	10
INSTALLATION	-----	12
MAINTENANCE	-----	14
TROUBLE SHOOTING	-----	15
CHARACTERISTICS	-----	15
WARRANTY	-----	16
WARRANTY REGISTRATION	-----	17

The following terms are used to indicate varying levels of precautions:



WARNING

indicates a potentially hazardous situation which, if not avoided, may result in serious injury



CAUTION

indicates a potentially hazardous situation which, if not avoided, may result in minor or moderate injury or damage to the product or other property.

IMPORTANT INFORMATION



WARNING



Keep out of the direct sunlight and flammable objects.



Do not disassemble the unit. It will expire remaining warranty.



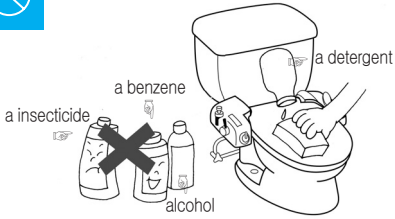
Low-temperature burn

Usually, a burn or a scald is caused as a result of the skin coming in contact with something very hot such as fire, boiling water, hot oil, etc. However, even contact with something of a relatively low temperature (104F–140F) may cause a low-temperature burn if it is in contact with the skin for an extended period of time. If there is someone of delicate physical condition, you are requested to advice him/her to take the above-mentioned precaution.

IMPORTANT INFORMATION



CAUTION



Do not use chemicals.
Use only damp cloth or neutral
detergent to clean.



Take all possible safety precautions
when physically challenged person,
elderly, or child is using the unit.



Do not slam or apply excessive force
on the unit.



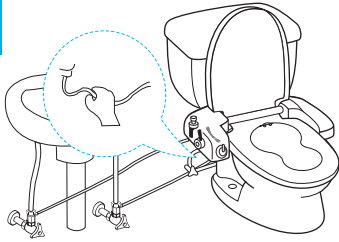
Do not step on the unit.

IMPORTANT INFORMATION

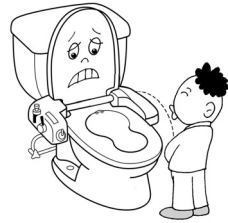
bioBidet
BB-i3000



CAUTION



Do not push or pull connection tube.



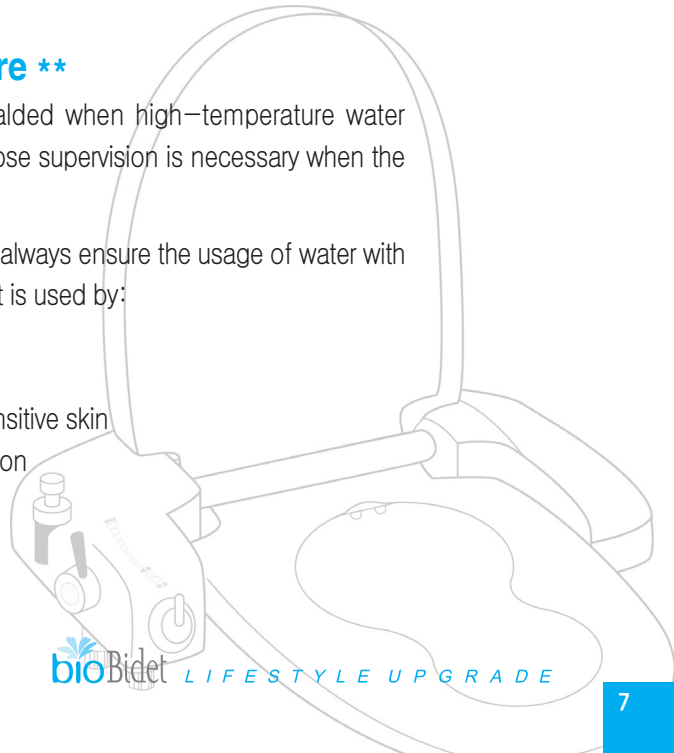
Do not splash water or waste water directly to the unit.

** Water Temperature **

The human skin may be scalded when high-temperature water comes into contact with it. Close supervision is necessary when the user is unstable or a child.

When using the **BB-i3000** always ensure the usage of water with lower temperatures when bidet is used by:

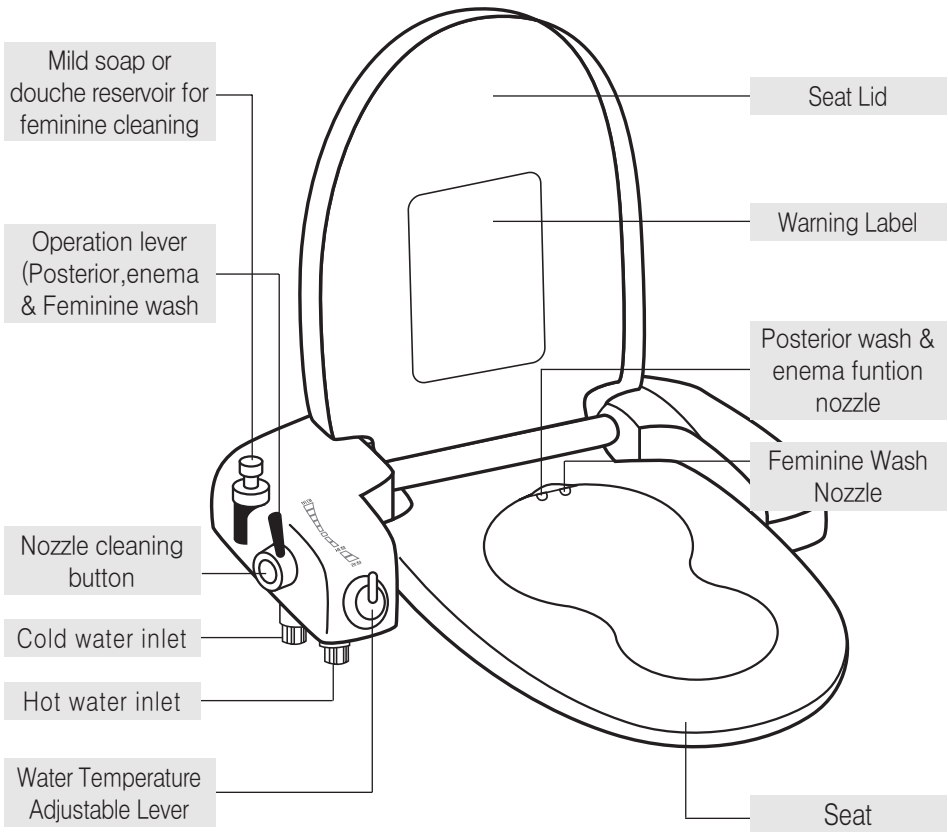
- * Children
- * An unstable or sick person
- * A person with particularly sensitive skin
- * Physically handicapped person



bioBidet

LIFESTYLE UPGRADE

IDENTIFICATION



IDENTIFICATION



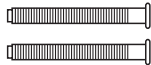
3/8" T-Valve
(2 pc)



Water Supply tubing
(4m)



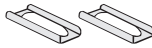
Fill valve water supply hose



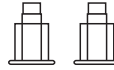
Mounting Bolts



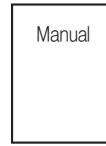
Cone Packings



Bolt Guides



Nuts



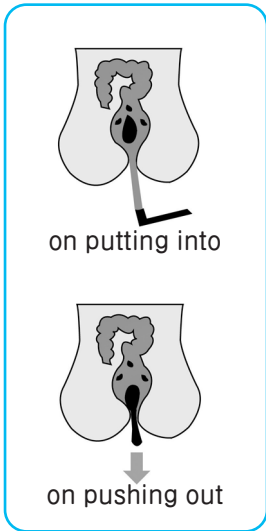
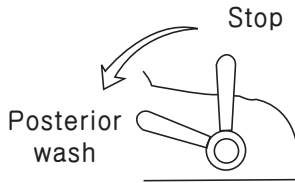
GENERAL PRECAUTIONS

1. Water supply should have a water pressure between 2.0 – 7.5kgf/cm² (28.4psi~ 106.7psi.)
2. Only connect to clean water pipe.
3. Take the protective measures to prevent from freezing.
4. Do not expose to direct sunlight, as it may discolor the plastic.
5. Do not push or pull the connecting tubes, it may cause water leakage.
6. Do not apply excessive force to the shower nozzle.



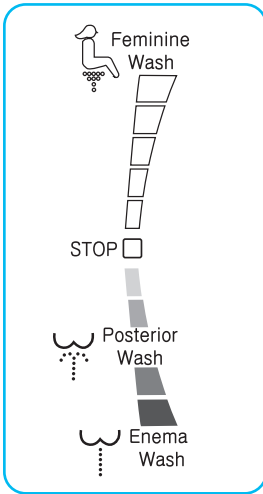
♣Posterior Washing & Enema function.

- Simply sit on the unit, and select posterior/enema function by pulling the lever backward gradually.



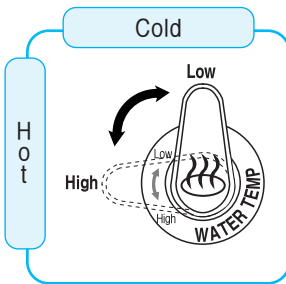
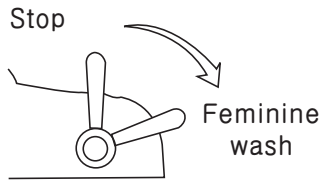
♣Water Pressure Adjustment & Enema Function.

- The water pressure can be manually adjusted to 5 levels.
- To activate the enema function, slowly increase the water pressure by adjusting the level till the washing water enters the rectum.
- Adjust your body to allow the water to easily enter your body.
- Once the water fills the rectum, strain your abdomen to eliminate waste matter from your system. This action may be repeated 3 or 4 times.



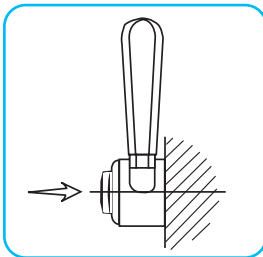
♣ Feminine Washing.

–For the feminine wash, slowly push the lever forward (away from you).



♣ Warm water adjustment (when applicable).

–Water temperature is adjustable to desired temperature as illustrated.



♣ Nozzle cleaning function

–Simply push self-cleaning button before and after using the unit for maximum hygiene.

INSTALLATION

1

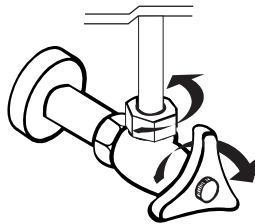
Removing the existing seat and lid.

–Remove existing seat and lid



2

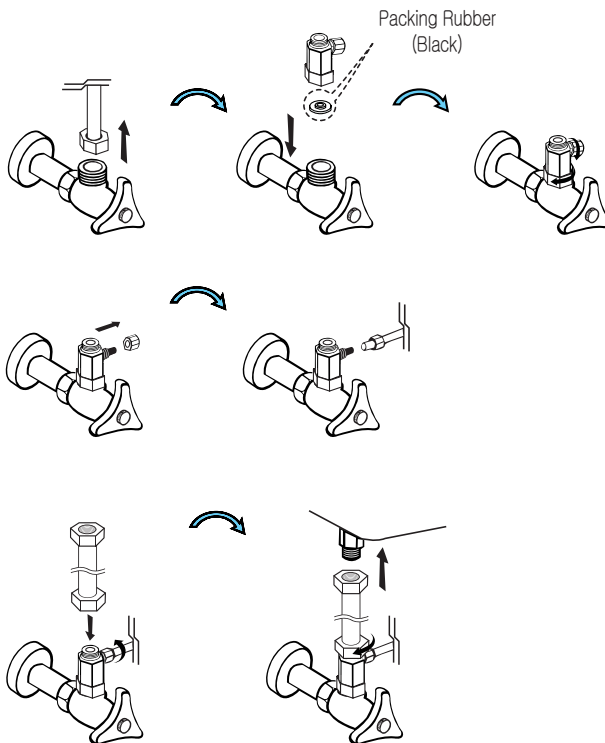
Close water supply shut off valve.



3

Connecting the T-Valve (Cold Water / Hot Water)

1. Flush out remaining water in water tank
2. Removing existing fill valve water supply hose.
3. Install supplied T-valve.
4. Connect "Cold" / "Hot" water supply tube.
5. Connect supplied fill valve water supply hose.
(7/8" × 3/8")



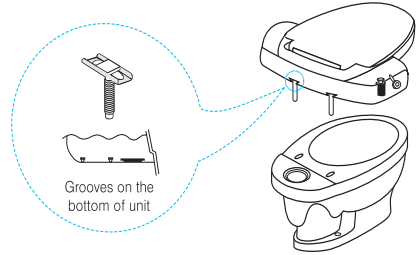
Tip:

Do not over tighten supplied parts when installing.
Use only hand pressure initially,
then tighten it gradually as checking for leakage.

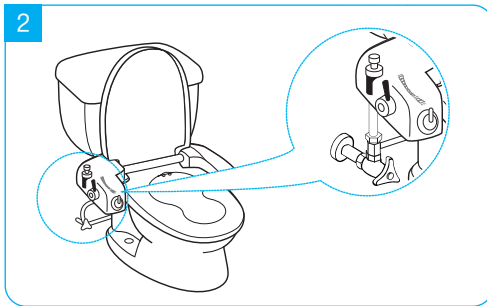
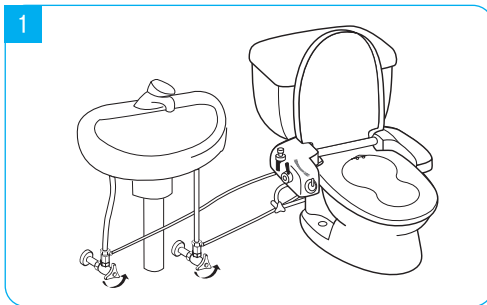
INSTALLATION

4 Installing BB-i3000.

1. Place mounting bolts into mounting brackets and slide into the mounting bracket guide rail on the bottom of the main unit.
2. Securely fasten cone packing from bottom to secure the unit to toilet.



- 5 Connect both hot and cold water supply tube to water inlet on bidet seat.

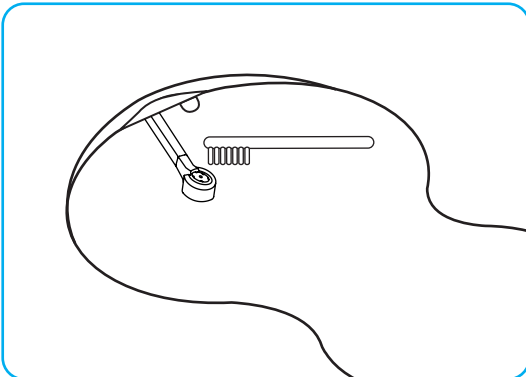


Cleaning the nozzle

- Pull out the nozzle and clean the nozzle with toothbrush.
- After cleaning the nozzle, push the nozzle–cleaning button on the operation lever to activate the self–cleaning function.

*** CAUTIONS***

- Donot drink the spraying water from the nozzles.
- Donot pull nozzle with excessive force



TROUBLE SHOOTING

♣ **Before calling the service (A/S) center, please perform the following checks.**

Problem	Remedy	Remarks
The washing water is not spraying properly	1. Check water supply valve. 2. Clean the nozzle.	
There is no hot water pipe below the wash basin	Connect from another hot water supplying source.	
Water leaking or dripping	Check the connection and securely fasten if loose. If leakage is from inside of the main unit, shut water off immediately, and contact service center.	

CHARACTERISTICS & CERTIFICATE

⦿ **Enema Function spraying system.**

Centralized rotary bubble water streams are made as water stream from 1 central nozzle and 6 circumferential water streams get together.

(U.S Patent No. US 6526602 B2, Korean Patent No. 0426635)

⦿ **Korean Medical appliance production lisencc : No. 1617 Certified by KOREAN FDA**

⦿ **Qualification : ISO 9001 & ISO 14001 Certified.**



ISO9001



ISO14001

BBC Innovation Corporation Limited Warranty

This limited warranty gives you specific legal rights, and you may also have other rights that may vary from state to state or according to other conditions.

General Limited Warranty Covered

The Manufacturer, **BBC Innovation Corporation** will warrant to the original retail buyer only, which fails in normal use and within the applicable periods specified below, following the terms of this warranty. **BBC Innovation Corporation** replacement will be warranted to the original purchaser of the products.

The Parts Warranty

If the parts fail within 12 month after original installation following the installation manual and normal operation, **BBC Innovation Corporation** will furnish a replacement part(s).

Will not be Covered by this Warranty

1. Defects and/or malfunctions from failure to properly install, operate and/or maintain the unit in accordance with the installation manual.
2. Damage from abuse, fire, flood, freeze, and any other act of God.
3. Damage resulting from unauthorized alterations, attachments and/or repairs.
4. If the product was not installed properly to residential water closets.
5. Damage from installing the unit in an environment with animals, mice or insects.
6. Damage caused by excess moisture or from water clogging the water closet.
7. Damage from not being installed in accordance with all applicable local codes, ordinances and good trade practices.
8. Color fading due to use in wrong environments.
9. Damage from consumable chemicals.
10. The warranty will not be covered without providing the date of purchase with original receipts.
11. Damage from misuse due to not following the installation manual.

WARRANTY REGISTRATION

1 Year Warranty

The Manufacturer carefully tests every Bio Bidet® before shipment. Bio Bidet® made with highest quality materials in the highest standard of production and workmanship and guaranteed to be free of defects. The warranty is good for one year from purchase date.

Only the original purchaser may submit a claim under this limited warranty.

Retain copy of purchase receipt for warranty

Service Center

205 Berg Street, Algonquin, IL 60102, U.S.A

Questions or Service inquiry, call to free

847.458.2334



For Service & Technical Support,
Call or Write to:
BBC Innovation Corporation
205 Berg Street,
Algonquin, IL 60102, U.S.A
www.biobidet.com

Distributed by:

