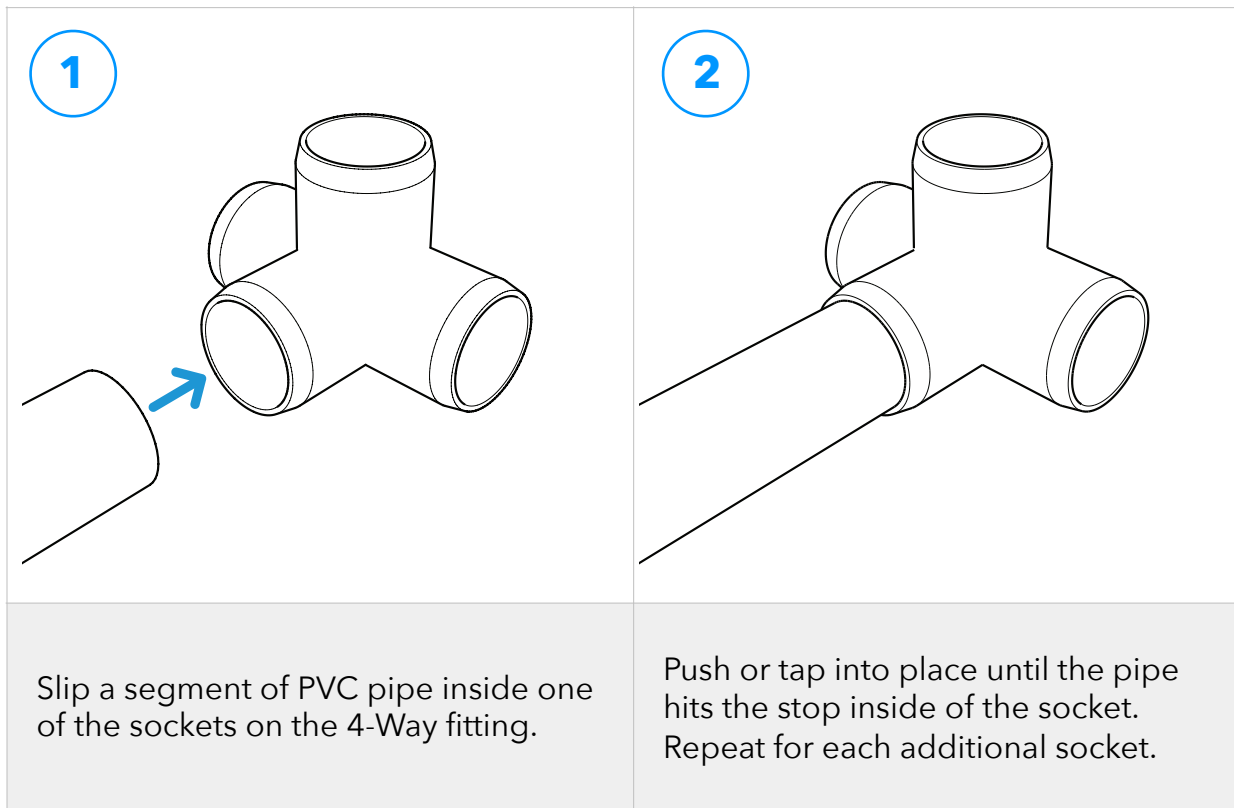


PRODUCT INSTRUCTIONS

4-Way PVC Fitting

FORMUFIT 4-Way PVC Fittings can accept up to four (4) segment of PVC pipe and can be used to create multi-layered, tiered levels with a single fitting. To connect this product to PVC pipe, follow the instructions shown below.

Assembly



Securing

For permanent and strong connections, it is recommended to use PVC cement/solvent to attach the PVC pipe and 4-Way PVC Tee fitting.

You can also temporarily connect this fitting by driving a self-tapping screw where the pipe and fitting meet, or apply electrical tape over the end of the pipe before inserting into the fitting for a temporary, yet strong connection.