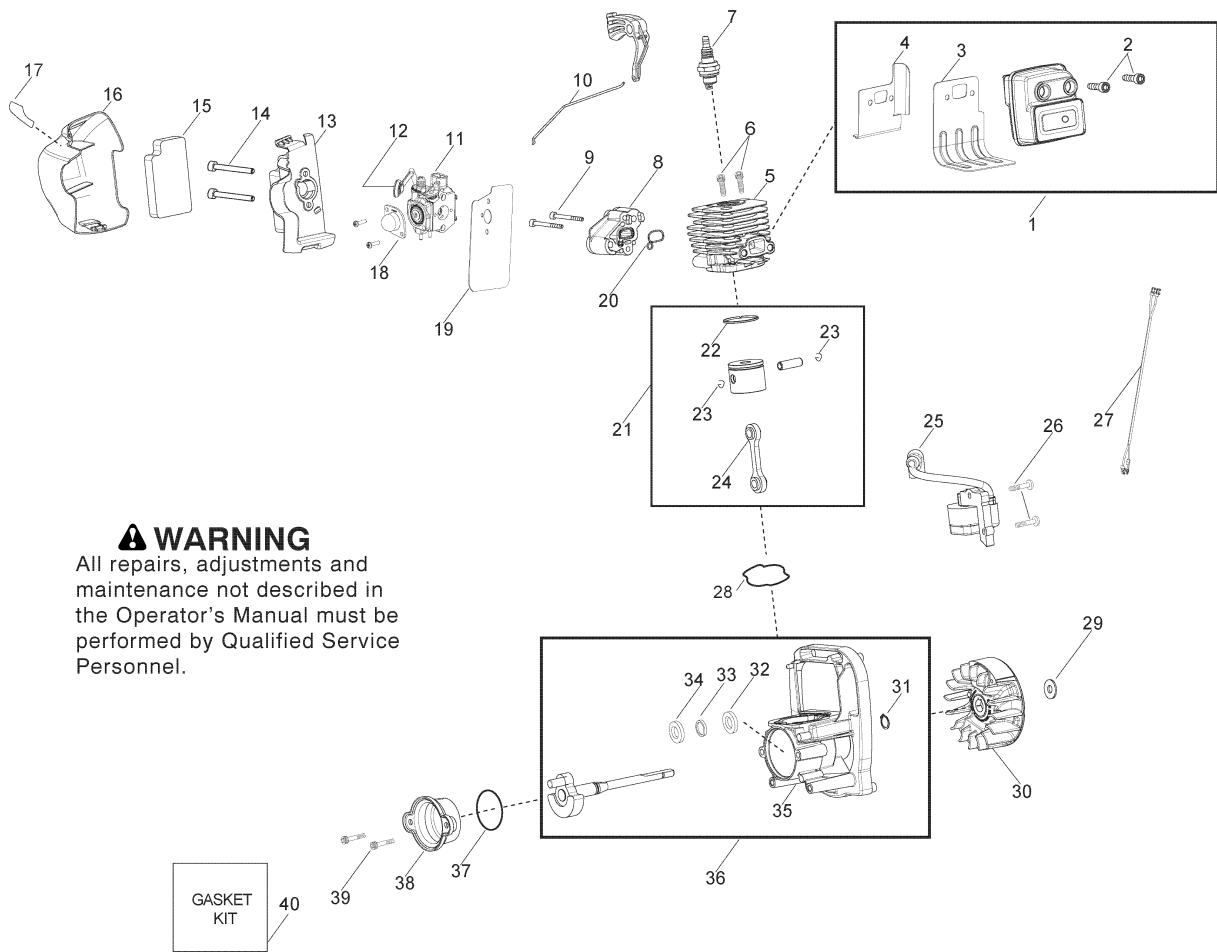




# SPARE PARTS LIST

BLOWERS

PPB25, 967622901, 2015-06



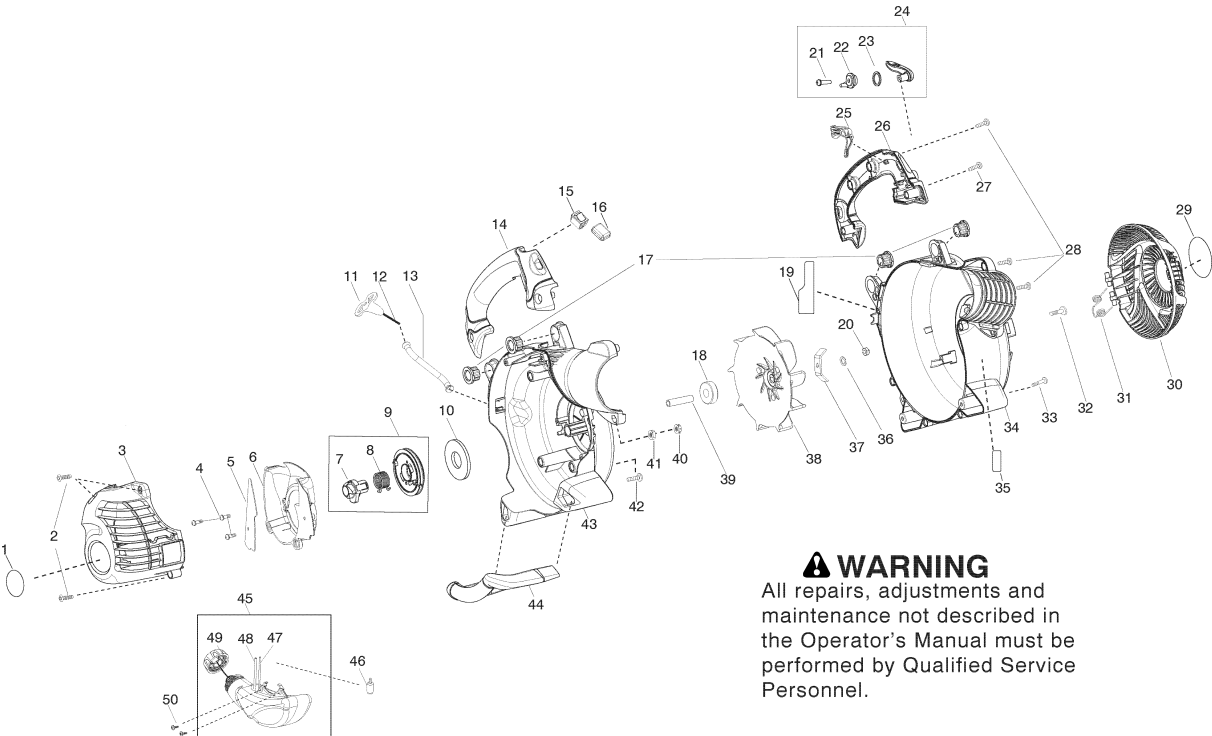
**⚠ WARNING**

All repairs, adjustments and maintenance not described in the Operator's Manual must be performed by Qualified Service Personnel.

## ENGINE

PPB25, 967622901, 2015-06

Ref	Part No	Description	Remark	QTY KIT
1	525 59 28-01	MUFFLER	"Assy - Muffler (Incl. 2,3,4)"	1
2	530 05 89-82	BOLT	Bolt	1
4	545 09 88-01	HEAT SHIELD	Shield - Heat	1
5	545 11 53-01	CYLINDER	Cylinder	1
6	530 01 59-53	SCREW	Bolt	1
7	952 03 02-49	SPARK PLUG	Spark Plug (RCJ-6Y)	1
8	545 08 49-01	ADAPTER CARBURETOR	Adapter - Carb.	1
9	530 01 64-41	SCREW	Screw	1
10	545 11 55-01	LINKAGE THROTTLE W	Linkage - Throttle	1
11	545 08 18-57	CARBURETTOR KIT	"Kit - Carb. Assy (C1U-W43) (Incl. 12,18)"	1
12	545 15 71-04	LEVER CHOKE C1U-W43	Lever- Choke (Red)	1
13	545 13 93-02	BOX	Base - Airbox	1
14	530 01 64-29	SCREW	Screw	1
15	545 14 65-01	FOAM AIR FILTER	Filter	1
16	545 13 92-01	AIRBOX COVER BLK	Cover - Air Box Filter	1
17	545 01 50-04	DECAL	Decal - Start Position	1
18	530 05 87-09	BULB	Bulb - Purge (zama)	1
19	-	TBD	Gasket (Ref.#40)	1
20	-	TBD	O-Ring (Ref.#40)	1
21	588 27 29-01	PISTON	"Kit - Piston / Connecting Rod (Incl. 22,23,24)"	1
23	530 01 51-62	CIRCLIP	Retainer - Wrist Pin	1
22	545 15 40-09	PISTON RING	Ring - Piston	1
24	545 08 18-65	CONNECTING ROD ASSY	Kit - Assy. Connecting Rod	1
25	545 15 80-01	MODULE IGN 8 DEG 1600 V	Module - Ignition	1
26	530 01 63-57	SCREW	Screw	1
27	545 12 76-01	HARNES	Assy - Wire Harness	1
28	-	TBD	O-ring (Ref.#40)	1
29	530 01 58-28	WASHER	Washer	1
30	530 05 41-15	FLYWHEEL	Assy - Flywheel	1
31	530 01 59-41	CLIP	Retainer - Crankshaft	1
32	530 05 57-28	BEARING	Bearing - Outer	1
33	530 01 92-64	SEAL	Seal	1
34	530 03 21-25	BEARING	Bearing - Inner	1
35	530 01 25-82	CRANKCASE	"Assy - Crankcase (Incl. 32,33,34)"	1
36	579 01 27-01	KIT	"Assy - Crankcase & Crankshaft (Incl. 31,35)"	1
37	-	TBD	"O-Ring (Ref.#38,40)"	1
38	530 05 79-54	PLUG	Assy - Rear Plug (Incl. 37)	1
39	530 01 63-86	SCREW	Screw	1
40	545 08 18-32	GASKET KIT	"Kit - Gasket (Incl. 3,19,20,28,37)"	1



**⚠ WARNING**  
All repairs, adjustments and maintenance not described in the Operator's Manual must be performed by Qualified Service Personnel.

## HOUSING

PPB25, 967622901, 2015-06

Ref	Part No	Description	Remark	QTY KIT
1	580 85 48-03	DECAL	Decal - Engine Cover	1
2	530 01 58-14	SCREW	Screw	1
3	588 17 49-01	ENGINE COVER	Assy - Engine Cover	1
4	530 01 58-80	SCREW	Screw	1
5	545 13 40-01	SHIELD	Shield - Baffle	1
6	545 09 91-01	BAFFLE	Baffle	1
7	545 05 24-01	HUB	Hub	1
8	545 05 25-01	SPRING	Spring - Pulley	1
9	545 05 04-07	KIT	Kit - Starter Pulley	1
10	545 05 49-01	SPRING	Spring - Starter	1
11	530 05 48-34	HANDLE	Handle - starter	1
12	545 05 04-16	KIT ROPE	Kit - Rope	1
13	545 10 71-01	TUBE STARTER ROPE	Tube - Starter Rope	1
14	545 13 86-01	HDL RT W/SOFTGRIP BLK / GRY	Handle - RH	1
15	545 08 18-30	KIT SWITCH MOMENTARY	Kit - Switch (momentary) (Incl. 16)	1
16	545 12 82-01	PROTECTOR, SWITCH	Protector - Switch	1
17	545 13 77-01	GROMMET	Grommet	1
18	545 09 90-01	BEARING	Bearing	1
19	587 73 01-01	DECAL	Decal - Start	1
20	530 62 66-05	NUT	Nut	1
21	530 01 58-14	SCREW	Screw	1
22	545 11 15-01	RATCHET CRUISE CONTROL	Rachet - Cruise control	1
23	545 17 31-01	WASHER	Wave Washer	1
24	545 08 18-67	KIT CRUISE CONTROL	"Kit - Cruise Control ( Incl. 21,22,23 )"	1
25	545 14 49-03	TRIGGER	Trigger - Throttle	1
26	545 13 88-01	HANDLE	Handle - LH	1
27	530 01 64-06	SCREW	Screw	1
28	530 01 58-14	SCREW	Screw	1
29	580 85 49-04	DECAL	Decal - Vac Door	1
30	545 13 90-01	DOOR	Door - Vac	1
31	545 11 56-01	SPRING VAC DOOR	Spring - Vac Door	1
32	545 00 35-02	SCREW	Screw	1
33	530 01 59-40	SCREW	Screw	1
34	545 15 25-01	ASSY SCROLL AV LH SRS BLK	"Assy - Scroll LH ( Incl. 30,31 )"	1
35	588 59 99-02	DECAL	Decal - Warning	1
36	530 09 23-22	WASHER	Lockwasher	1
37	545 12 07-01	MULCHING BLADE	Blade - Mulch	1
38	580 78 09-01	HUB ASSY	Assy-Impeller	1
39	576 81 01-01	SPACER	Spacer - Flywheel	1
40	530 01 55-15	LOCK NUT	Locknut	1
41	530 01 51-97	NUT	Nut	1
42	530 01 63-86	SCREW	Screw	1
43	545 15 26-01	ASSY SCROLL AV RH SR	Assy-Scroll Assy. RH (Incl. 18)	1
44	545 13 85-01	HANDLE	Handle - Vac	1
45	578 94 33-06	FUEL TANK ASSY	"Assy - Fuel Tank (Incl. 47,48,49)"	1
46	530 09 56-46	FILTER	Assy - Fuel Pickup	1
47	581 64 86-01	LINE	Kit - Fuel Line (carb/purge)	1
48	581 64 86-01	LINE	Kit - Fuel Line (tank/purge)	1
49	578 93 16-04	FUEL CAP ASSY	Assy - Fuel Cap w/retainer	1
50	530 01 64-45	SCREW FUEL TANK RETAINER	Screw - Fuel Tank Retainer	1