

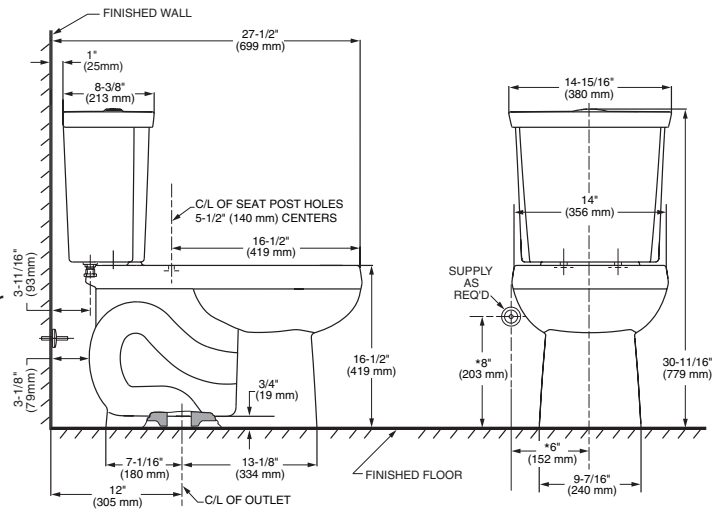
# CADET<sup>®</sup>3 HET DUAL FLUSH RIGHT HEIGHT<sup>®</sup> ROUND FRONT COMPLETE TOILET

VITREOUS CHINA

## CADET<sup>®</sup>3 HET DUAL FLUSH RIGHT HEIGHT<sup>®</sup> ROUND FRONT COMPLETE TOILET

### ☐ 3380BA.216ST

- Vitreous china
- Meets definition for HET (High Efficiency Toilet)
- High efficiency, low consumption
  - Heavy Flush (6.0 Lpf/1.6 gpf)
  - Light Flush (3.8 Lpf/1.0 gpf)
- Features the Premium Cadet 3 Flushing System, the longest standing history of high performance toilets
- 16-1/2" Rim height for ADA accessible applications
- EverClean<sup>®</sup> Surface Stays Cleaner Longer: Permanent EverClean antimicrobial surface inhibits the growth of stain and odor causing bacteria, mold and mildew on surface. The EverClean super smooth surface keeps fixtures cleaner longer.
- Meets EPA WaterSense<sup>®</sup> criteria
- 305mm (12") rough-in
- Fully glazed 2" Trapway
- PowerWash<sup>®</sup> rim scrubs bowl with pressurized water every flush
- Generous 9" x 8" water surface area
- HET DF 800 MaP Score\*\*
- **Easy Installation.** Everything needed for toilet installation is included and can be hand tightened
- Chrome plated, top mounted, push button actuator
- 2 color matched bolt caps
- Slow Close toilet seat
- Wax ring gasket with closet bolts
- Lifetime warranty on chinaware, 5 year warranty on all mechanical parts, and 1 year warranty on seat



### Nominal Dimensions:

699 x 380 x 779mm  
(27-1/2" x 14-15/16" x 30-11/16")

### Compliance Certifications -

#### Meets or Exceeds the Following Specifications:

- ASME A112.19.2/CSA B45.1 for Vitreous China Fixtures
- US EPA WaterSense<sup>®</sup> Specification for HET's

\*\* Maximum Performance (MaP) testing performed by IAPMO R&T Lab. MaP Report conducted by Veritec Consulting, Inc. and Koeller and Company.

### NOTES:

THIS COMBINATION IS DESIGNED TO ROUGH-IN AT A MINIMUM DIMENSION OF 305MM (12") FROM FINISHED WALL TO C/L OF OUTLET. \* DIMENSION SHOWN FOR LOCATION OF SUPPLY IS SUGGESTED. SUPPLY NOT INCLUDED WITH FIXTURE AND MUST BE ORDERED SEPARATELY.

**IMPORTANT:** Dimensions of fixtures are nominal and may vary within the range of tolerance established by ANSI Standard A112.19.2. These measurements are subject to change or cancellation. No responsibility is assumed for use of superseded or voided pages.

EVERCLEAN<sup>®</sup>  
Surface

CADET<sup>®</sup>3  
Flushing System



### To Be Specified:

- Color:  White
- Supply with stop: