



## 3.5" COMMERCIAL GRADE STUMP GRINDER

**OPG777**

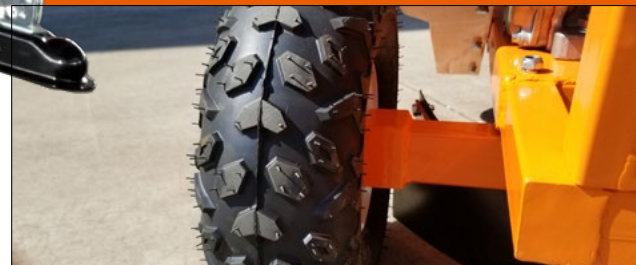
### DESCRIPTION

Powered by 14HP KOHLER® Command Pro commercial engine. Mounted on a Heavy Duty welded 2x2 Steel, solid frame structurally engineered for endurance performance. Extreme duty 2x2 axle with dual locking hitch pins for trouble free wheel brakes and transport over rough terrain. Direct Power Drive delivers 3600rpm and 22.7 Gross Torque ft Lbs to a 12 inch solid steel cutting wheel mounted on premium pillar bearings.

Demolishes stumps with 9 Carbide teeth cutting 3 ½ inches wide per cut. Cuts any diameter stump 12" high and 9 in below ground. Designed and manufactured for Strength, Durability and Performance. Features Key shut-off, locking throttle, drop stand, solid bar lift handles, includes tow bar and extra set of teeth.

### SPECIFICATIONS

Part Number:	OPF316L
Engine Model	Kohler
Engine	14HP Command Pro Commercial
Rated Power[Kw(Hp)]	14
Rated Speed(Rpm)	3600
Tires	ATV Locking Heavy Duty Axles
Wheelbase	32"
Stump Diameter/Height Max	Any Diameter 12 Inches High
Cutting Blades	9 Dual Carbide Cast Mounted Cutters
Cutting Width	3 ½ Inch Cutting Path
Gearbox	Direct Drive Dual Belts
Warranty	3 Yr Engine – 1 Yr Chassis
Assembled Dimensions	91 x 32 x 52"
Weight	234 Lbs
Shipping Crate Dimensions	42 x 23 x 25" 275Lbs
Container Qty	158



ATV Tires DUAL Locking



9 Carbide Cutting Head



Adjustable Bow Handle With Heavy Duty Frame Mounting



Extra Set Of Teeth Included